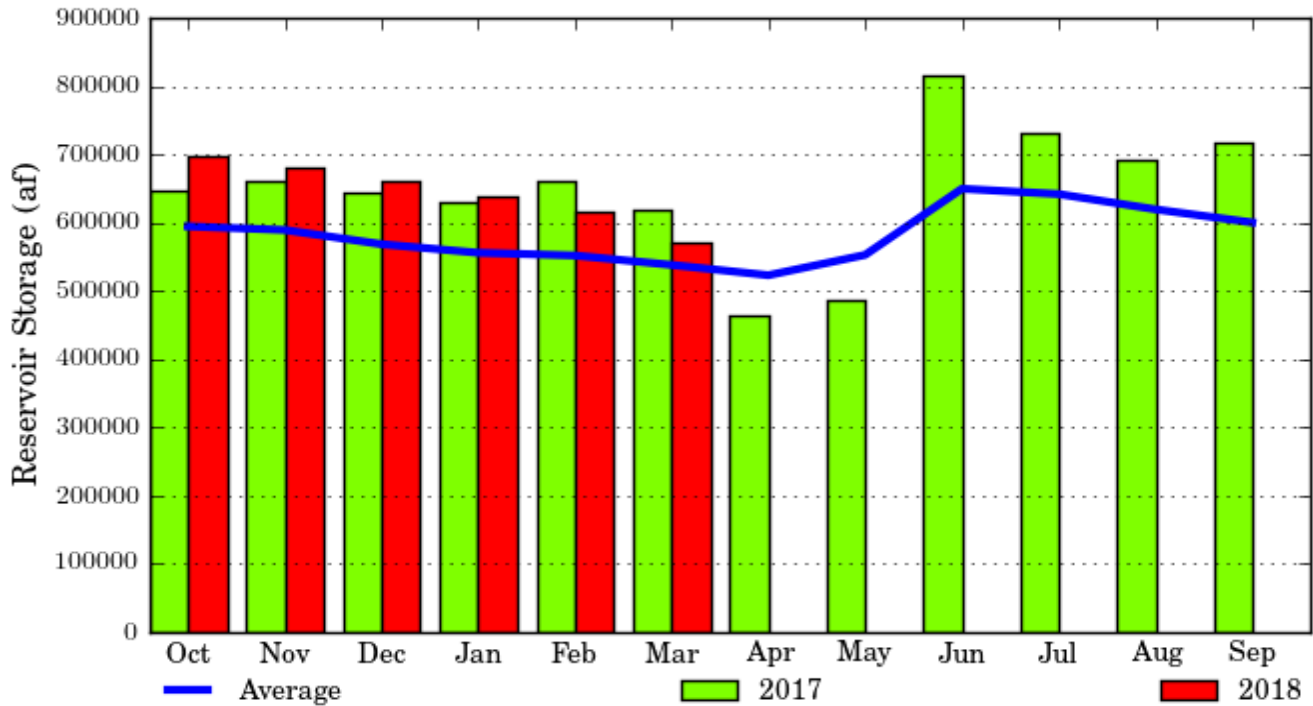


Boysen Reservoir, Wyoming - Monthly Storage Graph
 Water Years 2017 and 2018, with Average Conditions
 Updated Through March - Water Year 2018



Boysen Reservoir, Wyoming - Monthly Storage Table

Water Years 2017 and 2018, with Average Conditions

Updated Through March - Water Year 2018

Month	2017 Storage	2018 Storage	Average Storage	Percent of 2017	Percent of Average
Oct	648200	696800	594500	107%	117%
Nov	661000	679400	589200	102%	115%
Dec	644700	660300	568400	102%	116%
Jan	630700	638200	555800	101%	114%
Feb	660300	615900	551800	93%	111%
Mar	618300	571400	538000	92%	106%
Apr	465000	--	522900	--	--
May	486900	--	552700	--	--
Jun	816900	--	649600	--	--
Jul	730300	--	641800	--	--
Aug	692900	--	619400	--	--
Sep	717000	--	600200	--	--