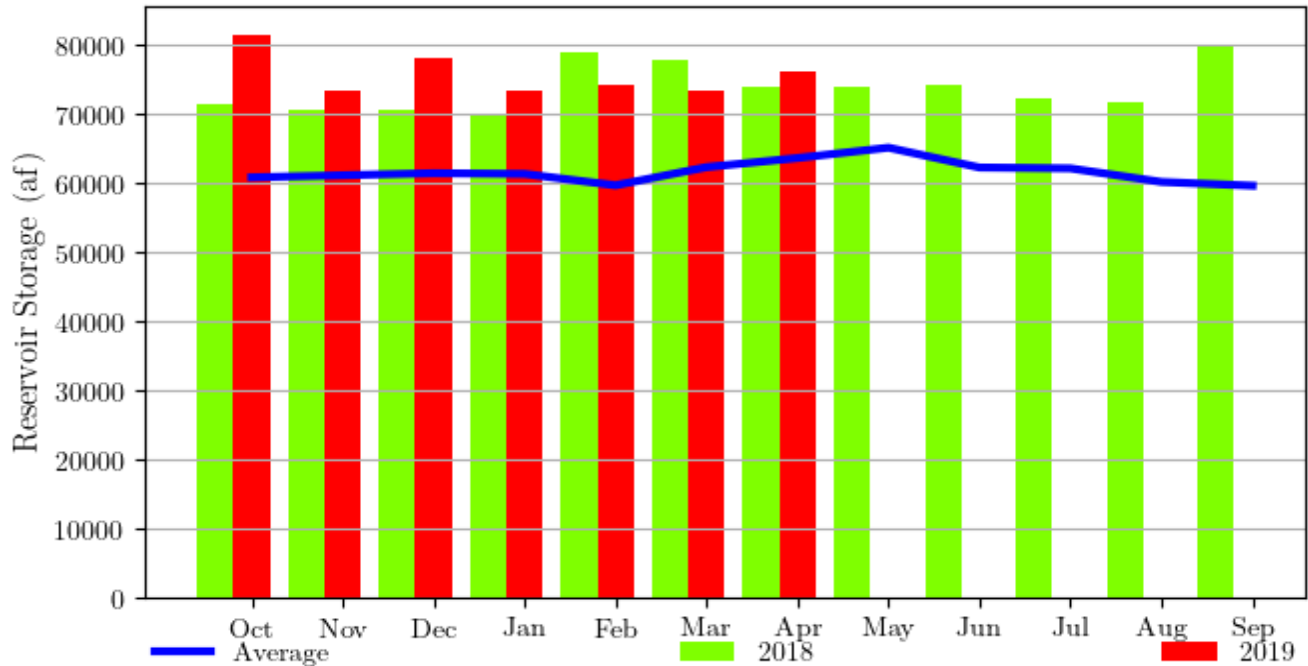


**Arbuckle Reservoir, Oklahoma - Monthly Storage Graph**  
 Water Years 2018 and 2019, with Average Conditions  
 Updated Through April - Water Year 2019



**Arbuckle Reservoir, Oklahoma - Monthly Storage Table**

Water Years 2018 and 2019, with Average Conditions

Updated Through April - Water Year 2019

Month	2018 Storage	2019 Storage	Average Storage	Percent of 2018	Percent of Average
Oct	71500	81500	60800	113%	134%
Nov	70700	73300	61100	103%	119%
Dec	70700	78200	61400	110%	127%
Jan	70000	73400	61300	104%	119%
Feb	78900	74100	59650	93%	124%
Mar	77800	73400	62278	94%	117%
Apr	73900	76000	63600	102%	119%
May	73900	--	65100	--	--
Jun	74200	--	62224	--	--
Jul	72200	--	62100	--	--
Aug	71600	--	60140	--	--
Sep	79900	--	59595	--	--