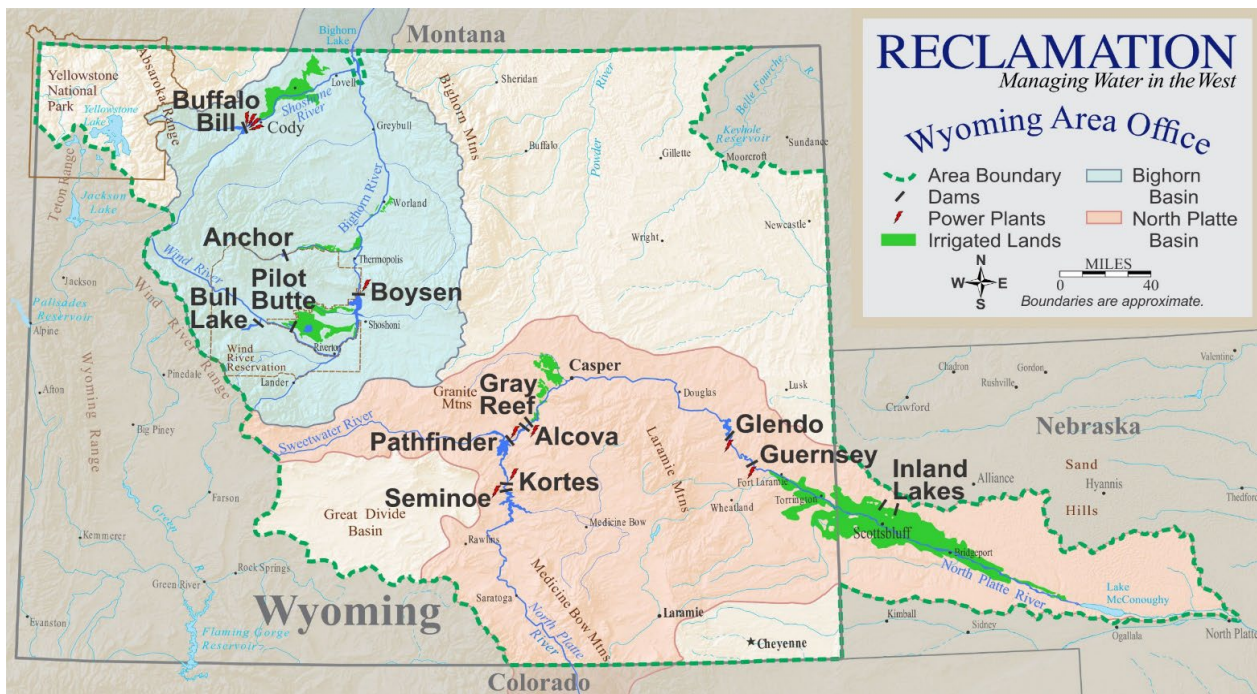




# BUREAU OF RECLAMATION

## Bighorn Basin Water Supply and Utilization Report Wyoming Area Office Report for October 2024



The Wyoming Area Office of the Bureau of Reclamation is responsible for the operation of Reclamation reservoirs in Wyoming east of the Continental Divide except for Keyhole Reservoir. Four off-stream reservoirs in Nebraska commonly referred to as the Inland Lakes also fall within the Wyoming Area. The North Platte River Basin Reservoirs have a combined storage capacity of 2,800,000 acre-feet. The major reservoirs in the Shoshone and Wind/Bighorn Basins have a combined storage capacity of 1,600,000 acre-feet.

**Report for October 2024  
WATER SUPPLY AND UTILIZATION REPORT  
BIGHORN RIVER BASIN  
WYOMING AREA OFFICE**

**This report concerns the operation of Reclamation facilities in the Shoshone and Wind/Bighorn River Basins.**

**Reclamation defines a water year as the time period of October 1 through September 30. Water year is abbreviated in this report as W. Yr.**

**Other organizations furnished information for the Water Supply and Utilization Report. Their cooperation is greatly appreciated.**

**This report is available on the Internet and can be accessed by following these steps:**

- 1. Log on to the Great Plains Home Page at <http://www.usbr.gov/gp>**
- 2. Select Water Operations.**
- 3. Select Water Management Information.**
- 4. Select Water Supply Report.**
- 5. Under Bighorn Basin, select the current report or reports from the previous 12 months.**

## BIGHORN RIVER BASIN RESERVOIR INFLOW

End of October      Inflow and Historical Inflows, values in 1,000 acre-feet

Reservoir	W. Yr. 2025	30 Yr. Avg.	% of Avg.	W. Yr. 2024	W. Yr. 2023	W. Yr. 2022
<b>Bull Lake</b>	4.7	6.7	71	8.6	7.5	9.3
<b>Boysen</b>	27.9	57.9	48	92.6	53.3	62.0
<b>Buffalo Bill</b>	21.4	30.2	71	53.3	30.6	23.2

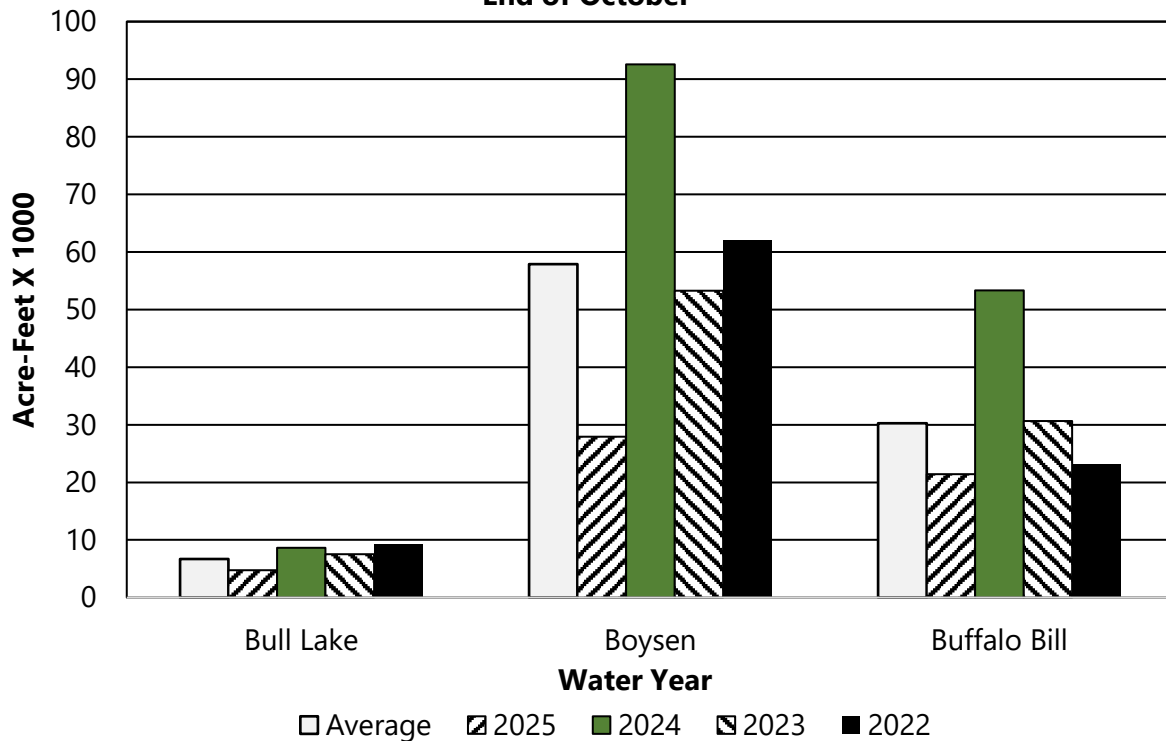
30 year average is based on the 1995- 2024 period.

End of October      Accumulated Water Year Inflows in 1,000 acre-feet

Reservoir	W. Yr. 2025	30 Yr. Avg.	% of Avg.
<b>Bull Lake</b>	4.7	6.7	71
<b>Boysen</b>	27.9	57.9	48
<b>Buffalo Bill</b>	21.4	30.2	71

## BIGHORN RIVER BASIN RESERVOIR INFLOW

End of October



## BIGHORN RIVER BASIN RESERVOIR OUTFLOW

End of October      Outflow and Historical Outflows, values in 1,000 acre-feet

Reservoir	W. Yr. 2025	30 Yr. Avg.	% of Avg.	W. Yr. 2024	W. Yr. 2023	W. Yr. 2022
<b>Bull Lake</b>	2.6	6.7	39	18.3	2.3	1.6
<b>Boysen</b>	53.7	53.4	101	86.9	55.4	48.5
<b>Buffalo Bill</b>	53.3	44.4	120	53.7	50.4	44.6

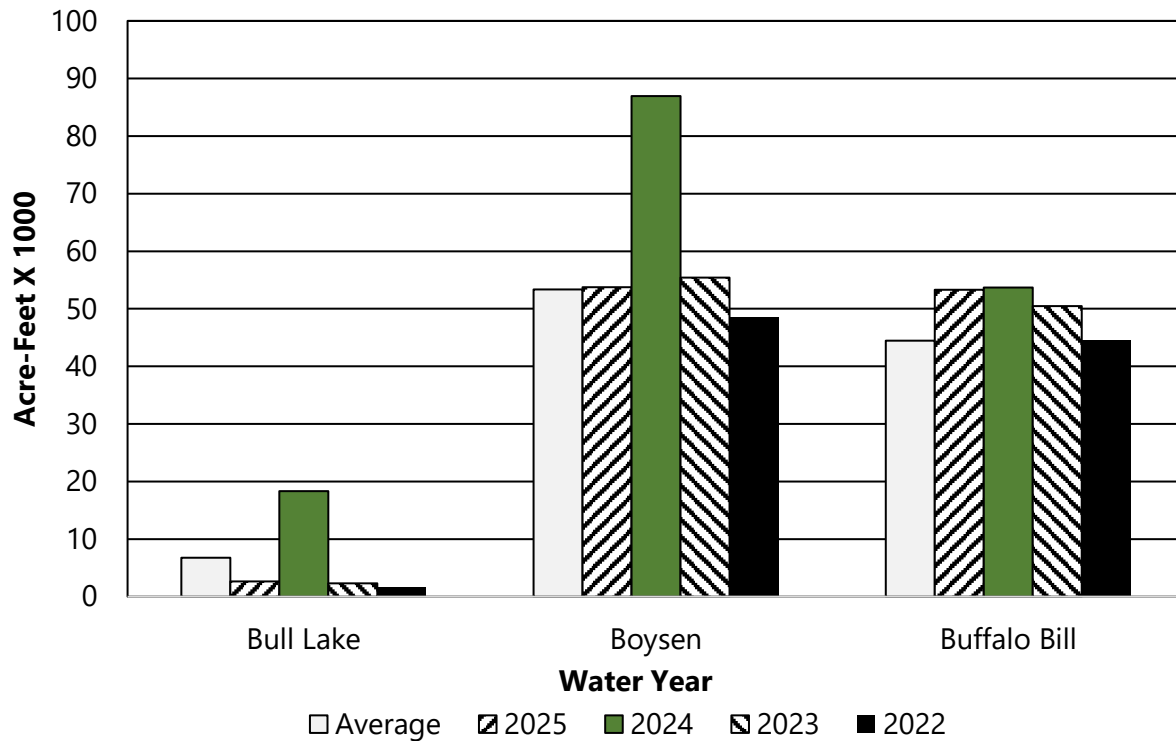
30 year average is based on the 1995- 2024 period.

End of October      Accumulated Water Year Outflows in 1,000 acre-feet.

Reservoir	W. Yr. 2025	30 Yr. Avg.	% of Avg.
Bull Lake	2.6	6.7	39
Boysen	53.7	53.4	101
Buffalo Bill	53.3	44.4	120

## BIGHORN RIVER BASIN RESERVOIR OUTFLOW

End of October



## BIGHORN RIVER BASIN RESERVOIR STORAGE

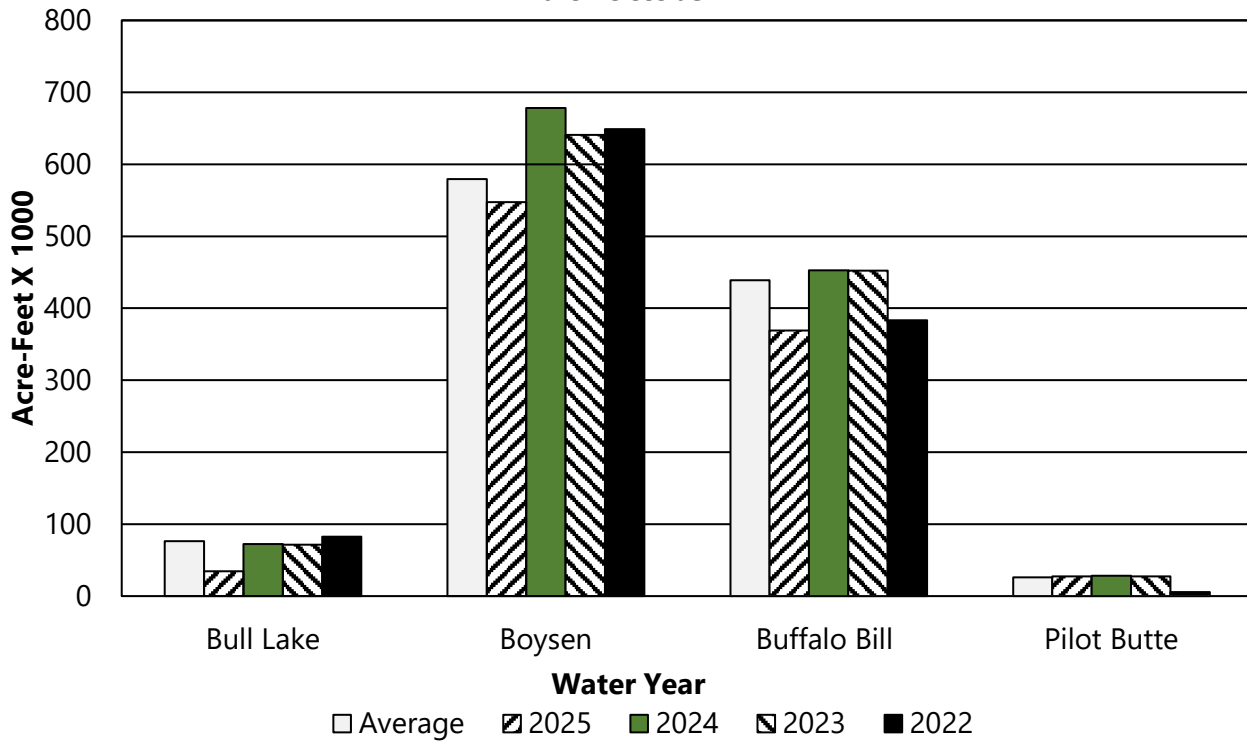
End of October      Storage, Historical Storage, and Storage Capacity in 1,000 acre-feet.

Reservoir	W. Yr. 2025	30 Yr. Avg.	% of Avg.	W. Yr. 2024	W. Yr. 2023	W. Yr. 2022	Total Conservation Storage Capacity	Percent of Capacity
<b>Bull Lake</b>	34.4	76.3	45	72.5	71.4	82.4	152.5	23
<b>Boysen</b>	547.3	579.4	94	678.4	641.0	648.7	741.6	74
<b>Buffalo Bill</b>	369.0	439.1	84	452.7	452.1	383.4	646.6	57
<b>Pilot Butte</b>	27.4	26.0	105	28.3	27.4	5.5	33.7	81

30 year average is based on the 1995- 2024 period.

## BIGHORN RIVER BASIN RESERVOIR STORAGE

End of October



## BIGHORN RIVER BASIN RESERVOIR GENERATION

End of October      Gross Generation and Historical Generation in giga-watt hours (GWH).

Reservoir	W. Yr. 2025	30 Yr. Avg.	% of Avg.	W. Yr. 2024	W. Yr. 2023	W. Yr. 2022
<b>Boysen</b>	3.3	3.4	96.7	6.7	2.7	2.6
<b>Pilot Butte</b>	0.0	0.1	0.0	0.0	0.0	0.0
<b>Heart Mtn.</b>	1.9	1.1	167.7	2.0	1.9	1.2
<b>Buffalo Bill</b>	2.0	3.4	58.7	3.7	1.8	2.1
<b>Shoshone</b>	1.0	1.6	59.6	1.5	1.6	1.5
<b>Spirit Mtn.</b>	1.7	1.2	135.9	1.6	1.8	1.2

Th 30 year average is based on the 1995 - 2024 period. Pilot Butte Powerplant is currently in "mothballed" status and does not generate electricity. Spirit Mountain average is based on the 1996 - 2024 period.

End of October      Accumulated Gross Generation Water Year in GWH.

Powerplant	W. Yr. 2025	30 Yr. Avg.	% of Avg.
<b>Boysen</b>	3.3	3.4	96.7
<b>Pilot Butte</b>	0	0.1	0
<b>Heart Mtn.</b>	1.9	1.1	167.7
<b>Buffalo Bill</b>	2.0	3.4	58.7
<b>Shoshone</b>	1.0	1.6	59.6
<b>Spirit Mtn.</b>	1.7	1.2	135.9

#

## BIGHORN RIVER BASIN GROSS GENERATION

End of October

