

Welcome

The Bureau of Reclamation, in cooperation with Town of Grand Lake, is hosting this scoping meeting for the Grand Lake Resource Management Plan (RMP).

What is Scoping?

- **Scoping is an opportunity for the public to be involved and to provide input into the planning process.**
- **Public input helps Reclamation identify issues that may need to be addressed or resolved in the RMP.**

Management Partnership

The Town of Grand Lake manages recreation at East Inlet Recreation Area under a 25-year management agreement with Reclamation.

The Town of Grand Lake is a public agency providing park and recreation programs for members of the community and visitors to Grand Lake. The Town of Grand Lake is responsible for the administration of recreation, wildlife, and related resources on Reclamation lands in the planning area.

Reclamation is the lead agency preparing the RMP and the Town of Grand Lake is a cooperating agency.

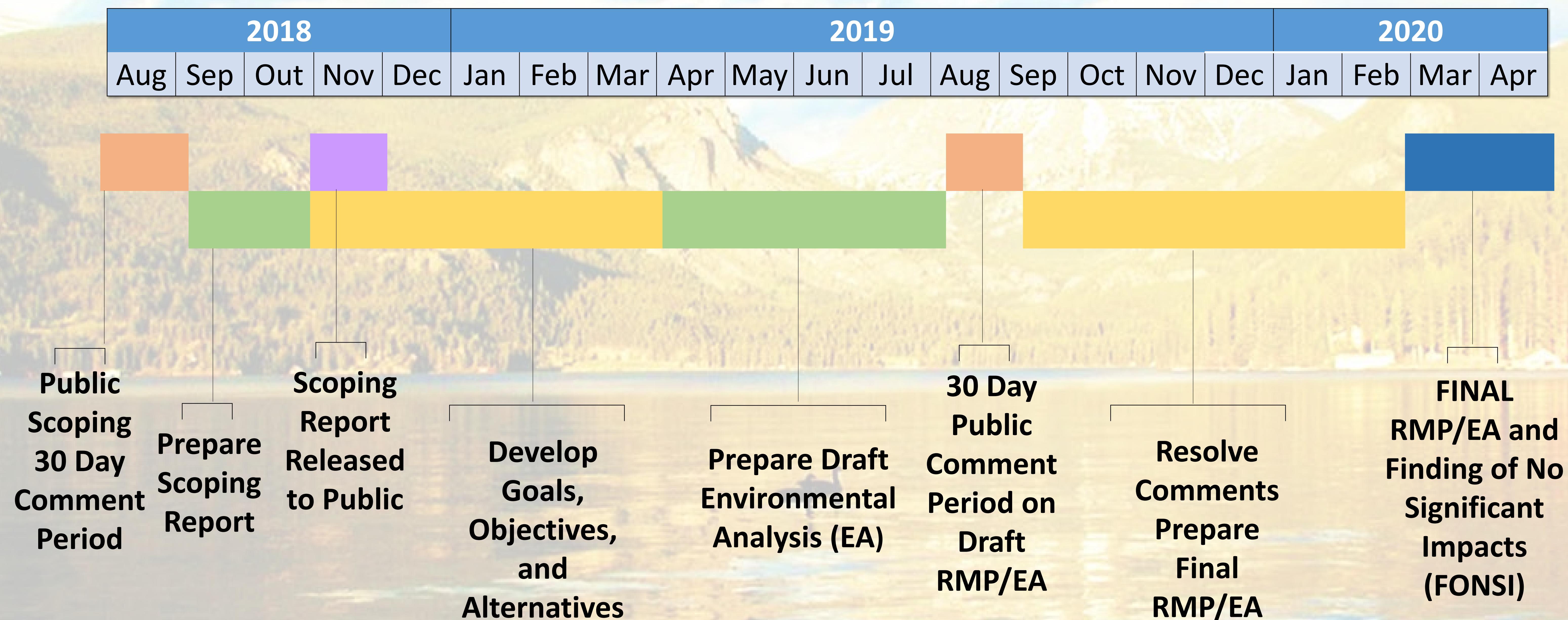
What is a Resource Management Plan?

An RMP is a comprehensive planning document that identifies goals and objectives for land use and resource management, specifies desired future land and resource conditions, and explains the policies and actions that will be implemented during the life of the plan to achieve those goals and objectives in fulfillment of Reclamation's management responsibilities.

- An RMP provides a decisional framework for managing the biological, physical and social conditions that Reclamation wishes to achieve within the planning area.
- An RMP provides a general outline for future land use management, documents the current condition of resources within the planning area, and establishes resource and management priorities.
- An RMP represents a long-term commitment to decisions, usually for a period of 10 years.

An RMP sets a strategic vision for the future which helps identify priorities and guide management decisions.

Planning Timeline



We are in the early stages of planning, which begins with public scoping. This timeline shows an overview of the milestones in the planning process and the timeframe in which we hope to achieve them.

RECLAMATION

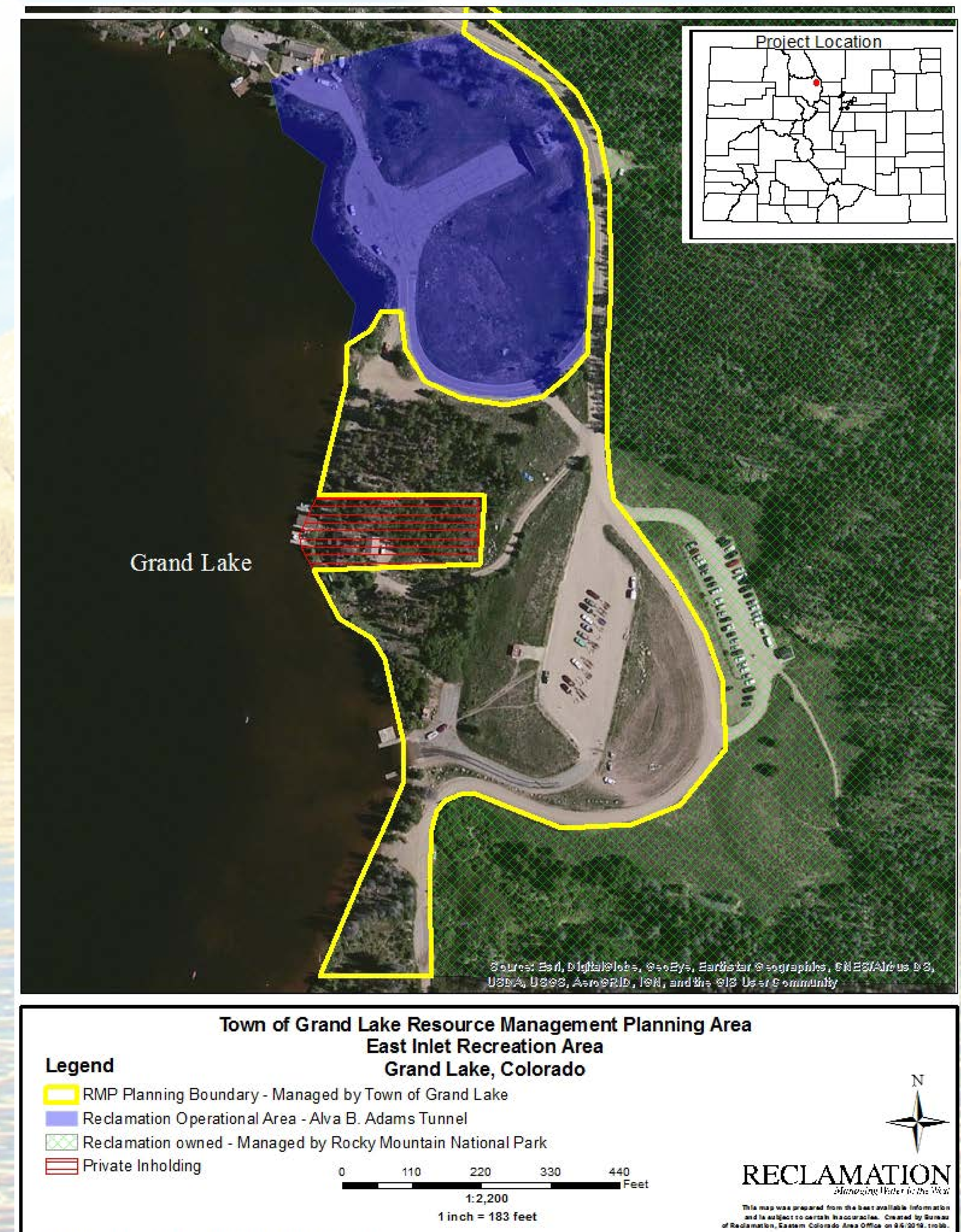
Managing Water in the West

Planning Area

Grand Lake is the only natural lake associated with the Colorado-Big Thompson (C-BT) Project and the gateway to the 13.1 mile transmountain diversion tunnel. The C-BT Project stores, regulates, and diverts water from the Colorado River on the western slope of the Continental Divide to the eastern slope of the Rocky Mountains. The C-BT Project provides supplemental water for land irrigation, municipal and industrial use, hydroelectric power, and water-oriented recreational opportunities.

The primary purpose of C-BT Project features is water storage and delivery. Grand Lake and associated project land also provide recreational opportunities, which is what will be addressed in this plan.

Operations of the C-BT Project, including Grand Lake water clarity initiatives and lake levels, will not be addressed in the RMP.



RECLAMATION

Managing Water in the West

Grand Lake

Grand Lake is a glacial lake and Colorado's largest natural lake with 507 surface acres. The legislative authorization for the C-BT Project incorporated manners of operations for primary purposes to preserve rights and interests dependent on the waters of the Colorado River, including the preservation of fishing, recreational facilities and scenic attractions of Grand Lake.

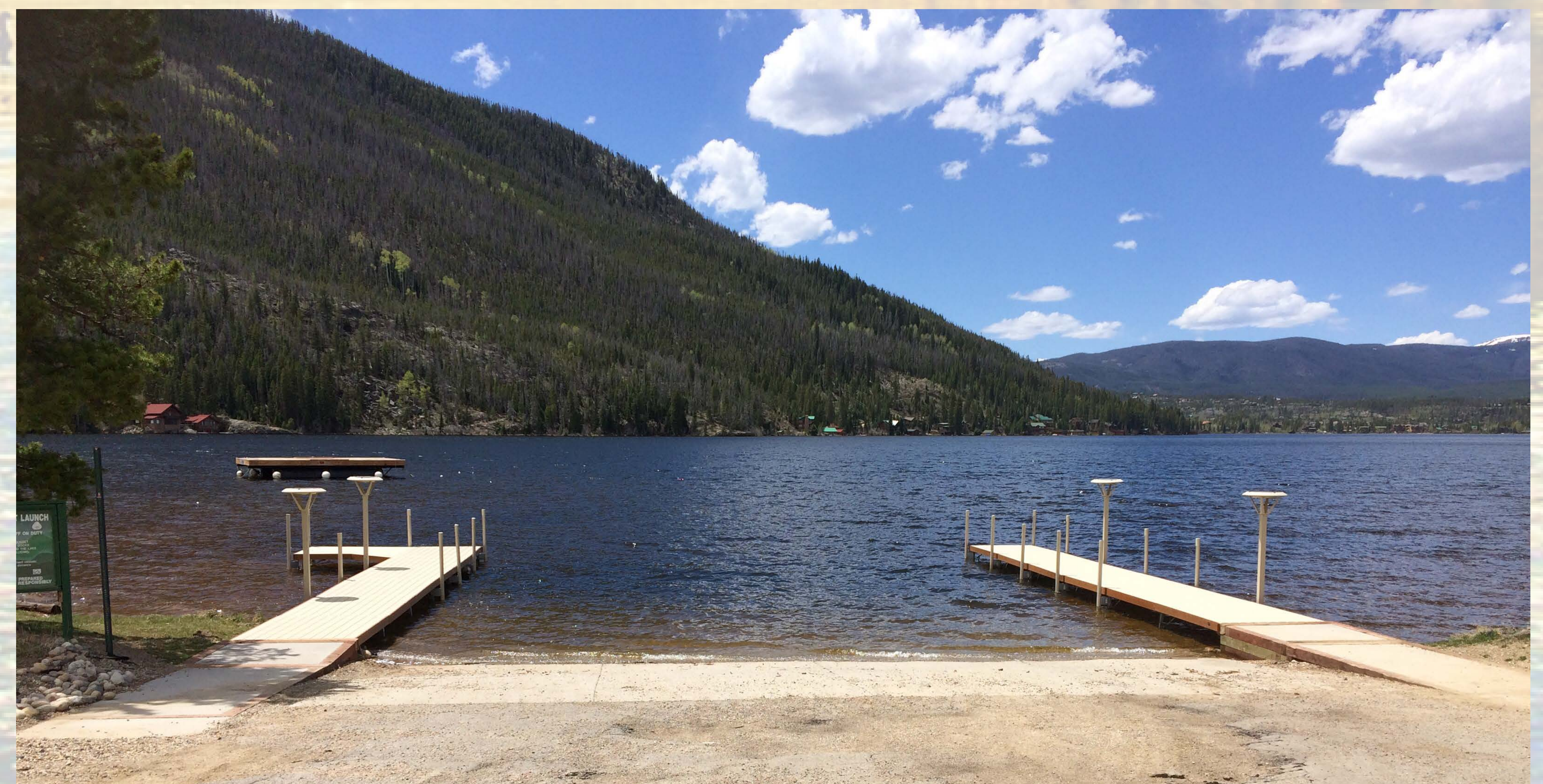
Reclamation has jurisdiction over 90 acres of land at the West Portal Area, including Alva B. Adams Tunnel and East Inlet Recreation Area, which splits administration of that land with several entities. The Grand Lake RMP will focus on the land at the East Inlet Recreation Area that is identified in the Management Agreement between Reclamation and the Town of Grand Lake. Fisheries and management of the body of water are not included in the Management Agreement.

Current facilities in the Planning Area, which support recreation, include:

- Boat ramps and courtesy docks
- Picnic tables
- Restrooms
- Fishing access
- Informal parking areas



© 2012 Northern Colorado Water Conservancy District. All rights reserved.



Scoping Issues

What input should you provide? Tell us how you use the land, what you think of the facilities, any user-conflicts you have had, how the visitor experience could be improved, and any other concerns you may have about the resources.

There are a range of issues to be considered during development of alternatives and evaluated as part of the environmental review process.

Some categories and examples identified include:

- 1. Water Resources** (*shoreline, soils and water*)
- 2. Recreation and Visual Resources** (*recreation development, present or preferred user experiences, conflicts, visual and noise concerns*)
- 3. Natural and Cultural Resources** (*noxious weeds, aquatic nuisance species, fire, wildlife, and cultural resources*)
- 4. Public Information, Health and Safety** (*types and assimilation of rules, regulations, interpretation and educational program interests*)
- 5. Land Management** (*access or land boundary conflicts, vandalism, allowed activities*)
- 6. Project Facilities** (*infrastructure changes, facility improvements, safety and security concerns or conflicts*)

Please give us your comments

There are several different ways you may provide input:

1. Fill out a comment form (available at the registration table) and drop it in the box.

2. Send an email with your comments to GrandLakeRMP@usbr.gov OR
Town@townofgrandlake.com

3. Mail written comments to:
Bureau of Reclamation
Attn: Traci Robb
11056 West County Road 18E
Loveland, CO 80537

OR

Town of Grand Lake
Attn: Nate Shull
P.O. Box 99
Grand Lake, CO 80447

The comment period for this scoping process ends on
September 13, 2018