

Wolford Mountain Reservoir Operations HUP Wrap-Up Meeting

March 8, 2022

Don Meyer
Senior Water Resources Engineer
Colorado River District



COLORADO RIVER DISTRICT
PROTECTING WESTERN COLORADO WATER SINCE 1937



River District Topics

- **2021 Hydrology / Operations**
 - **Wolford 45% / 30 ft Drawdown**
 - **High Water Temperatures**
 - **Shoshone Outage - ShOP**
 - **GMR Substitution - Delayed**
- **2022 Snowpack / Runoff Forecast**
 - **Wolford 80% / 65%**
 - **Cameo 97% / 88%**
 - **“La Nina” Water Supply Outlook**
- **2022 Projected Operations**
 - **Wolford - No Fill?**
 - **High Water Temperatures?**
 - **Debris Mobilization?**

2021 & 2022 Wolford Hydrology and Operations

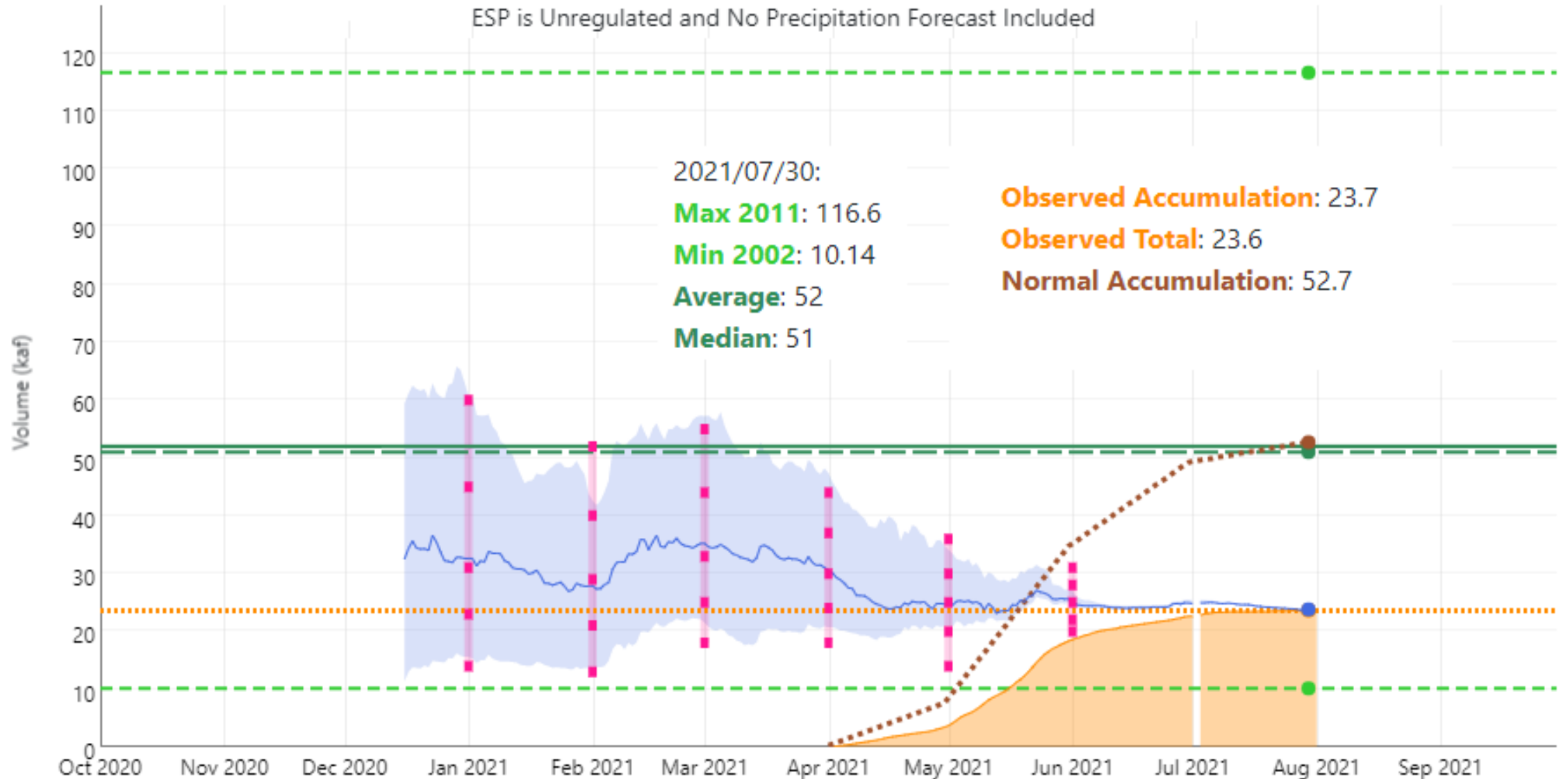


2021 Water Supply Forecast

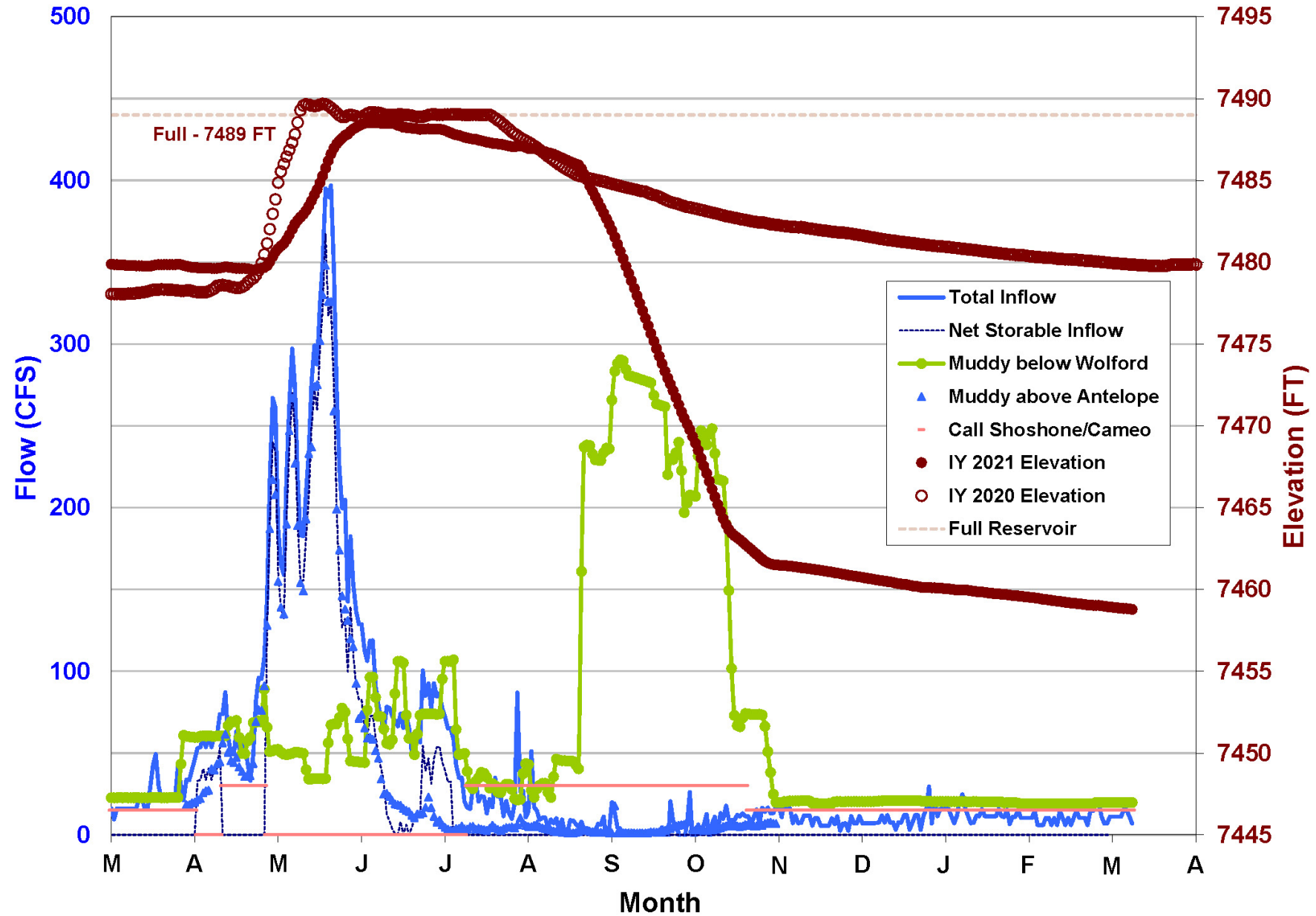
Muddy Ck - Wolford Mountain Reservoir (WORC2)

Period: Apr-Jul, Observed Volume: 23.6 kaf (45% Average, 46% Median)

ESP is Unregulated and No Precipitation Forecast Included

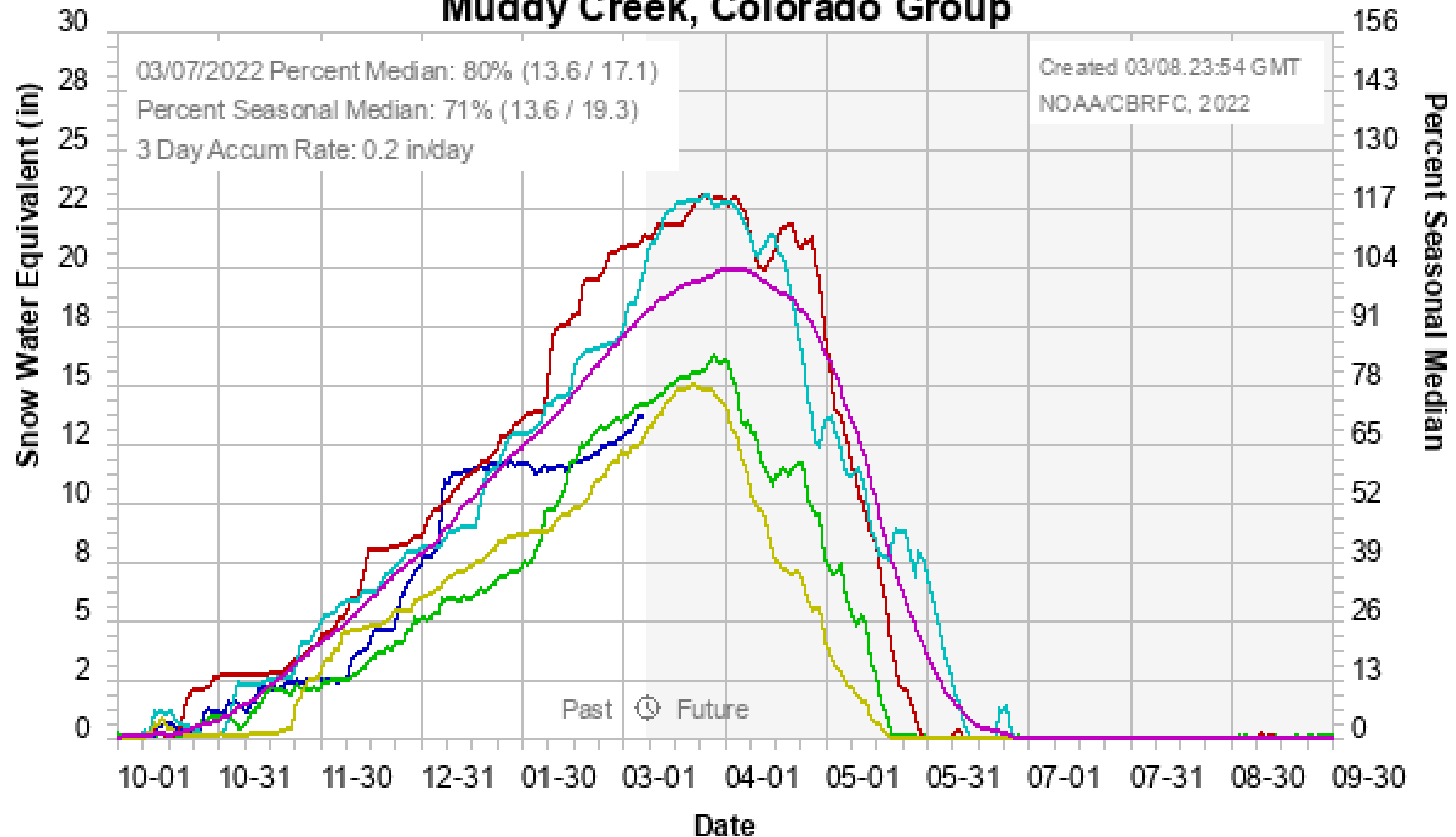


Wolford Reservoir 2021-22 Flows and Elevation



Colorado Basin River Forecast Center

Muddy Creek, Colorado Group



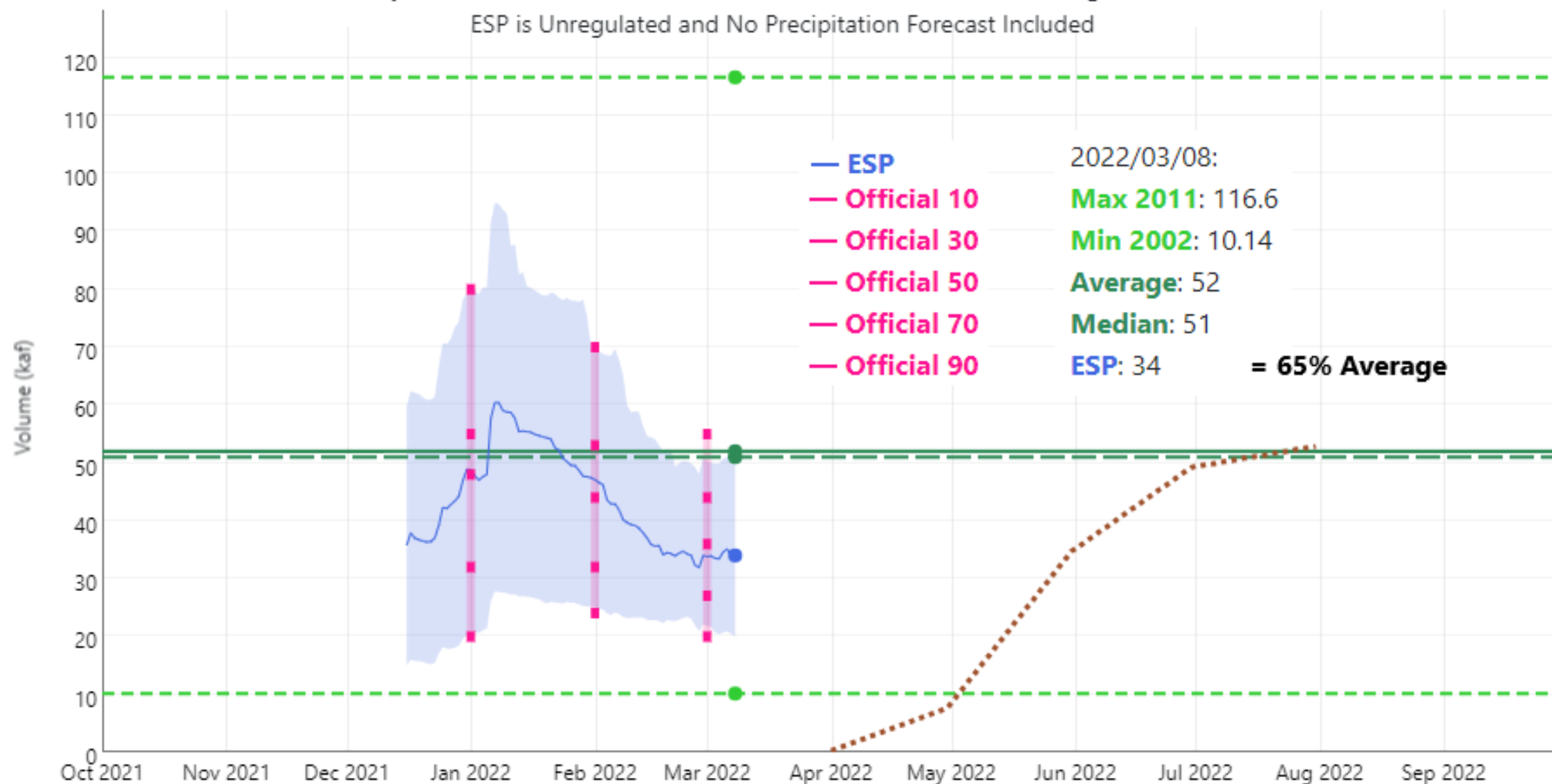
2022 2021 2020 2019 2002 Average 1991-2020

2022 Water Supply Forecast

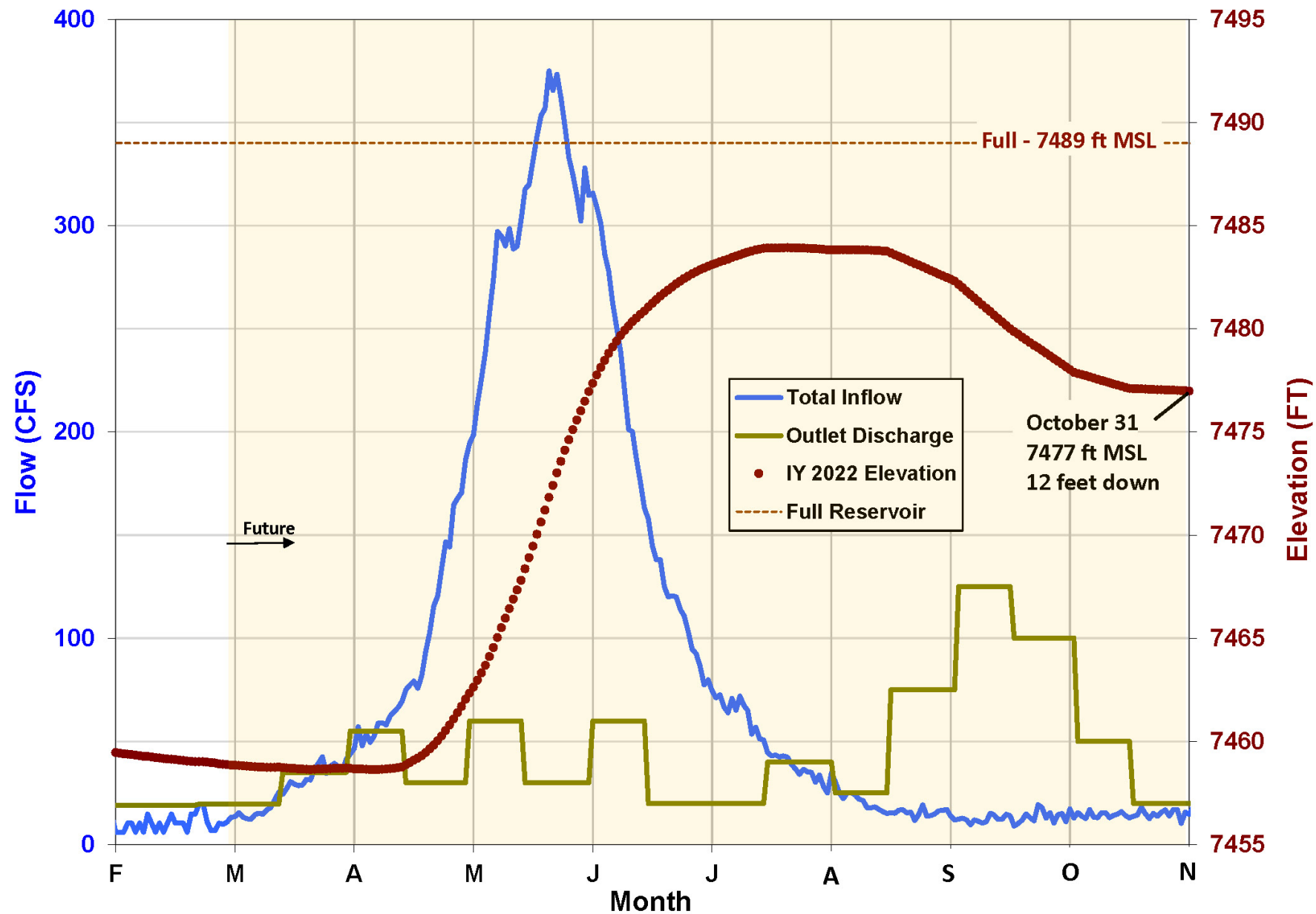
Muddy Ck - Wolford Mountain Reservoir (WORC2)

Period: Apr-Jul, Official 50% Forecast (2022-03-01): 36 kaf (69% Average, 71% Median)

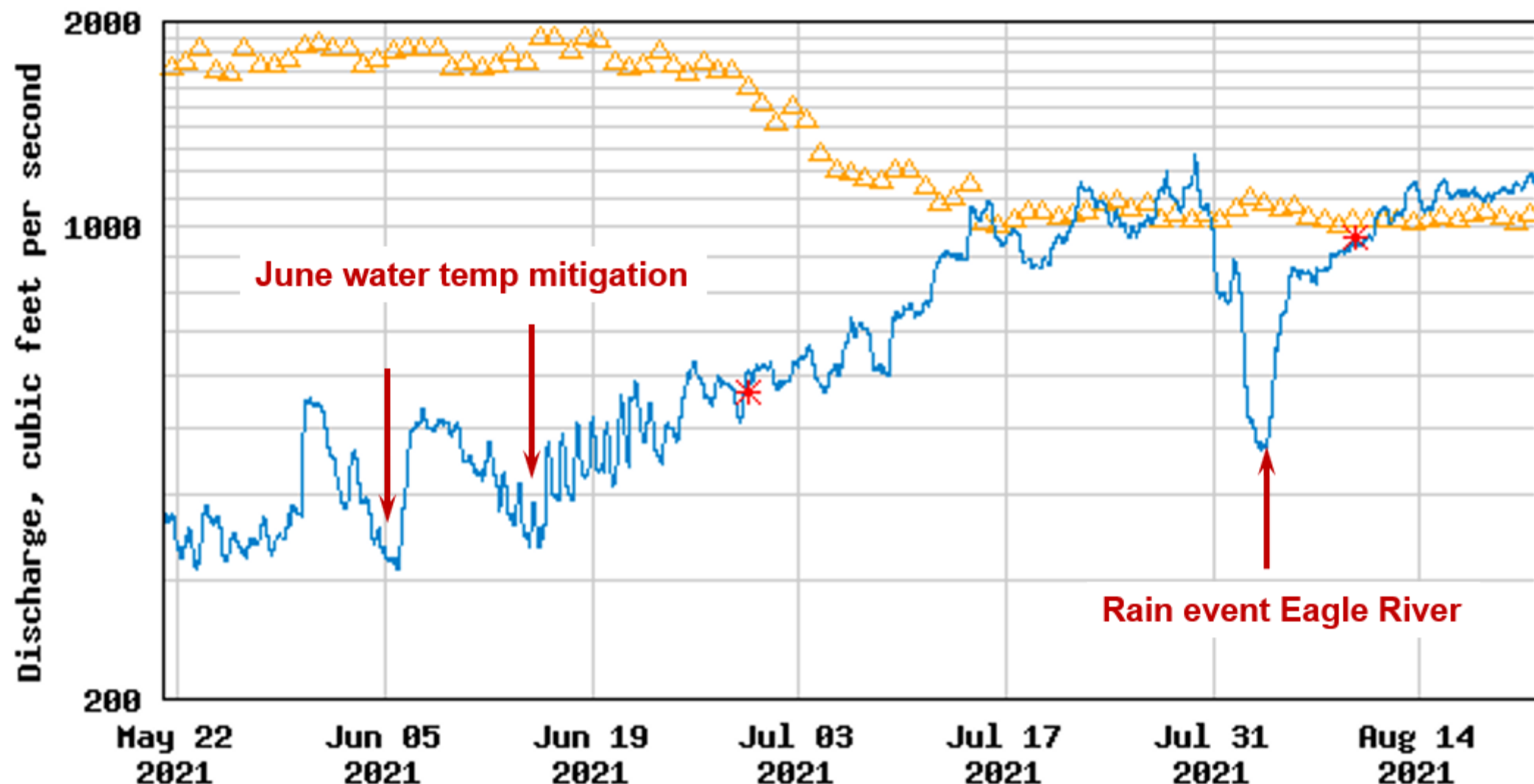
ESP is Unregulated and No Precipitation Forecast Included



Wolford IY 2022 Operations with 69% Inflow and Call Off April 15



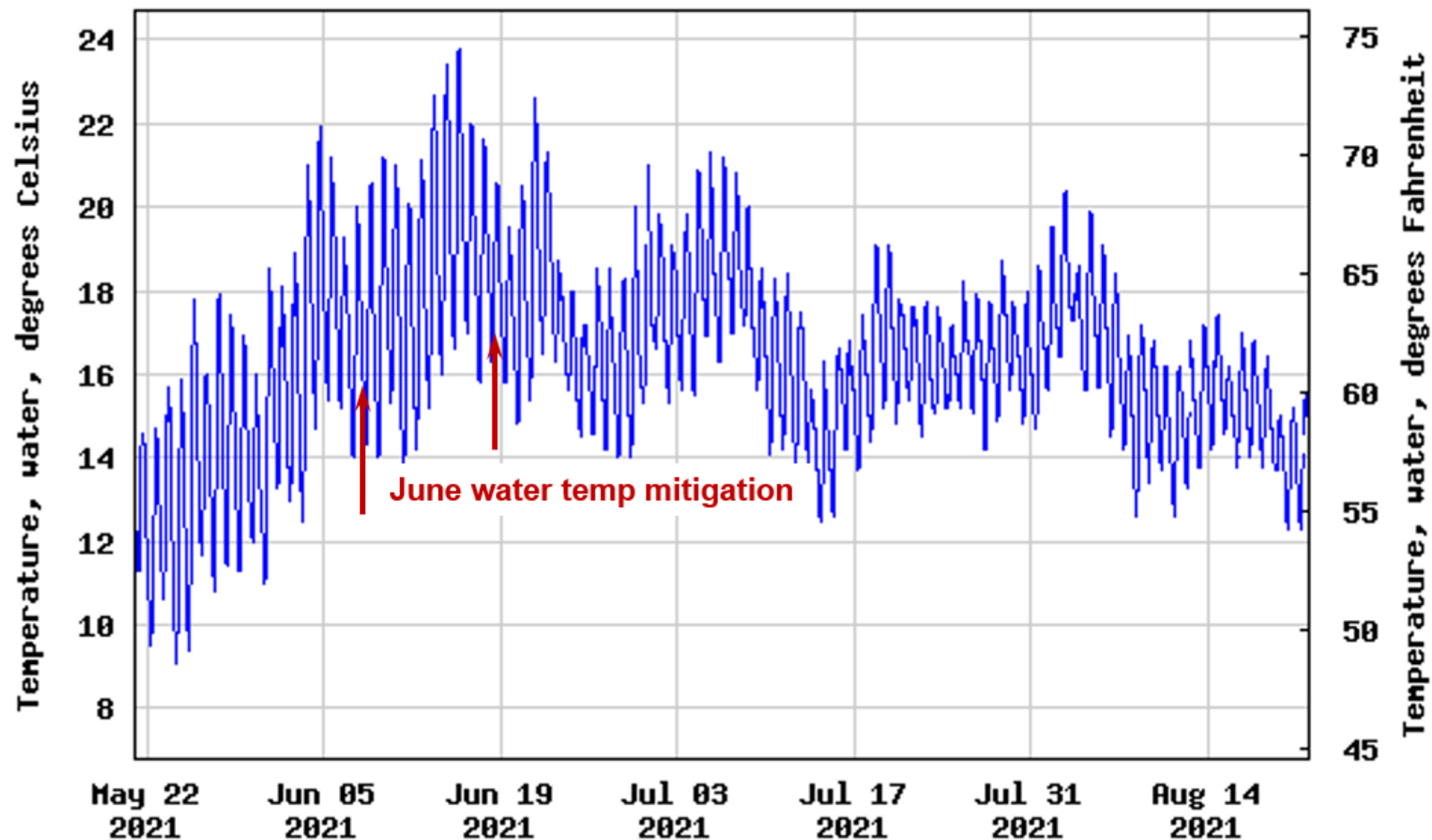
USGS 09058000 COLORADO RIVER NEAR KREHMLING, CO



----- Provisional Data Subject to Revision -----

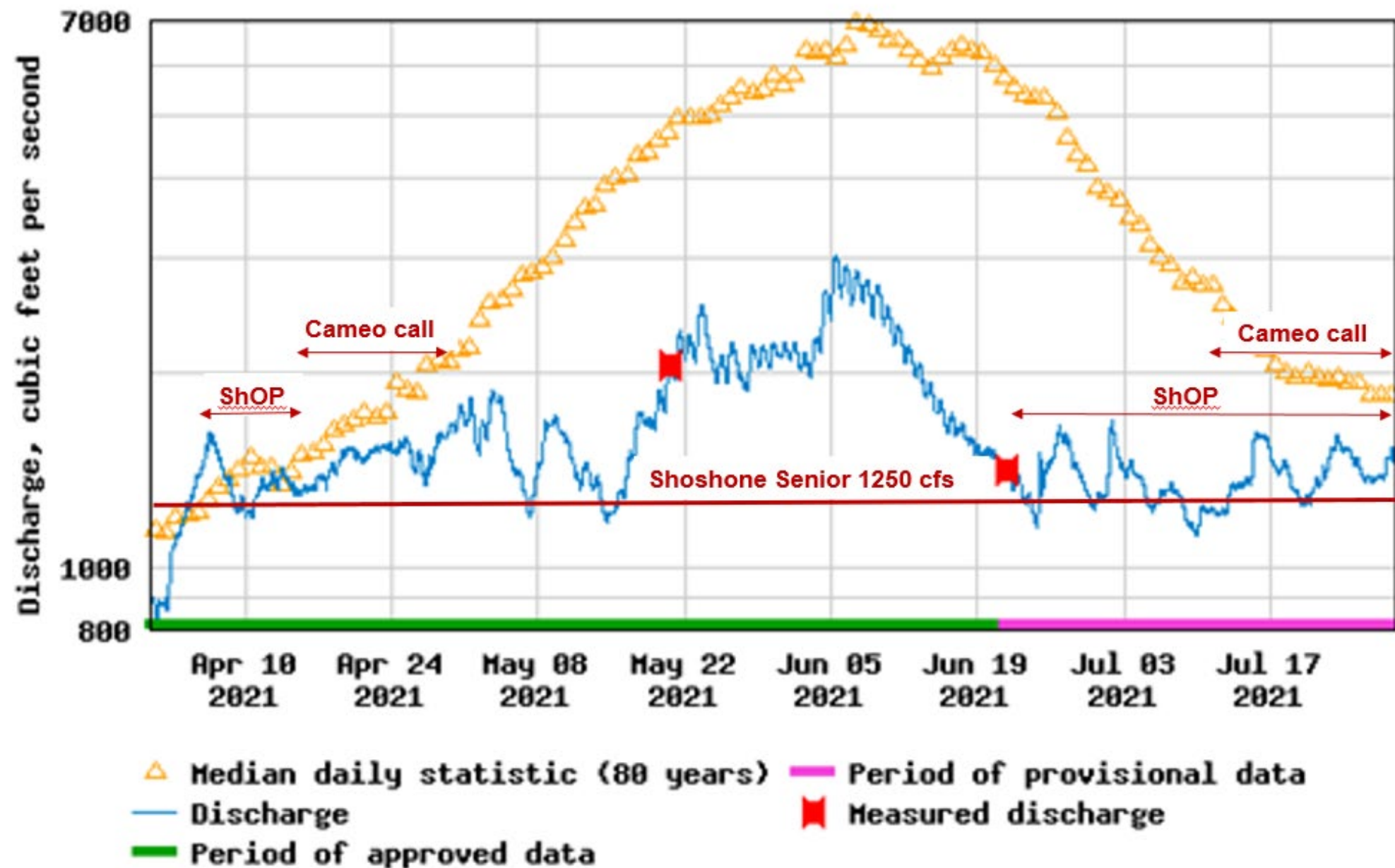
△ Median daily statistic (58 years) * Measured discharge
— Discharge

USGS 09058000 COLORADO RIVER NEAR KREMMLING, CO



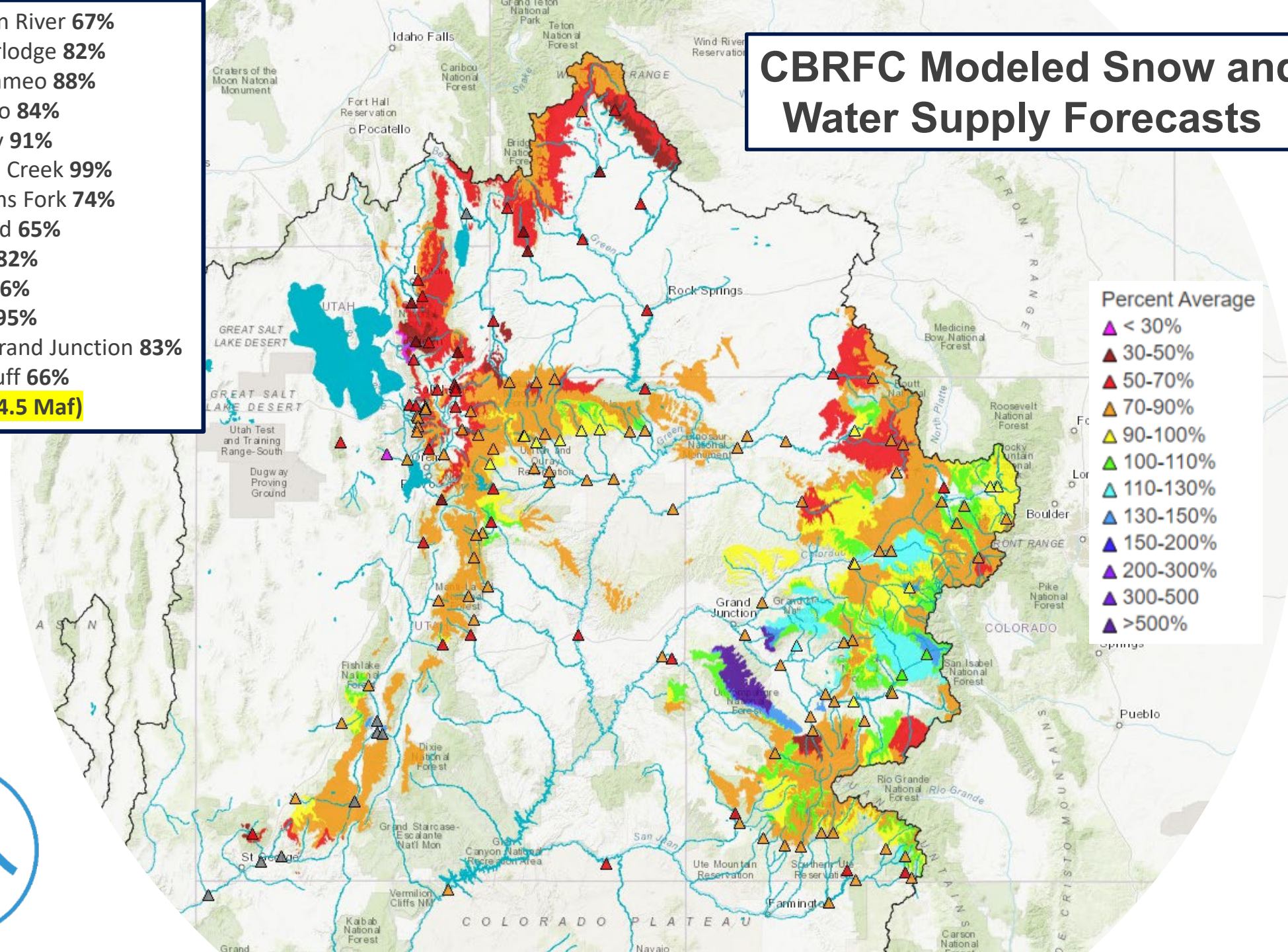
---- Provisional Data Subject to Revision ----

USGS 09070500 COLORADO RIVER NEAR DOTSER0, CO



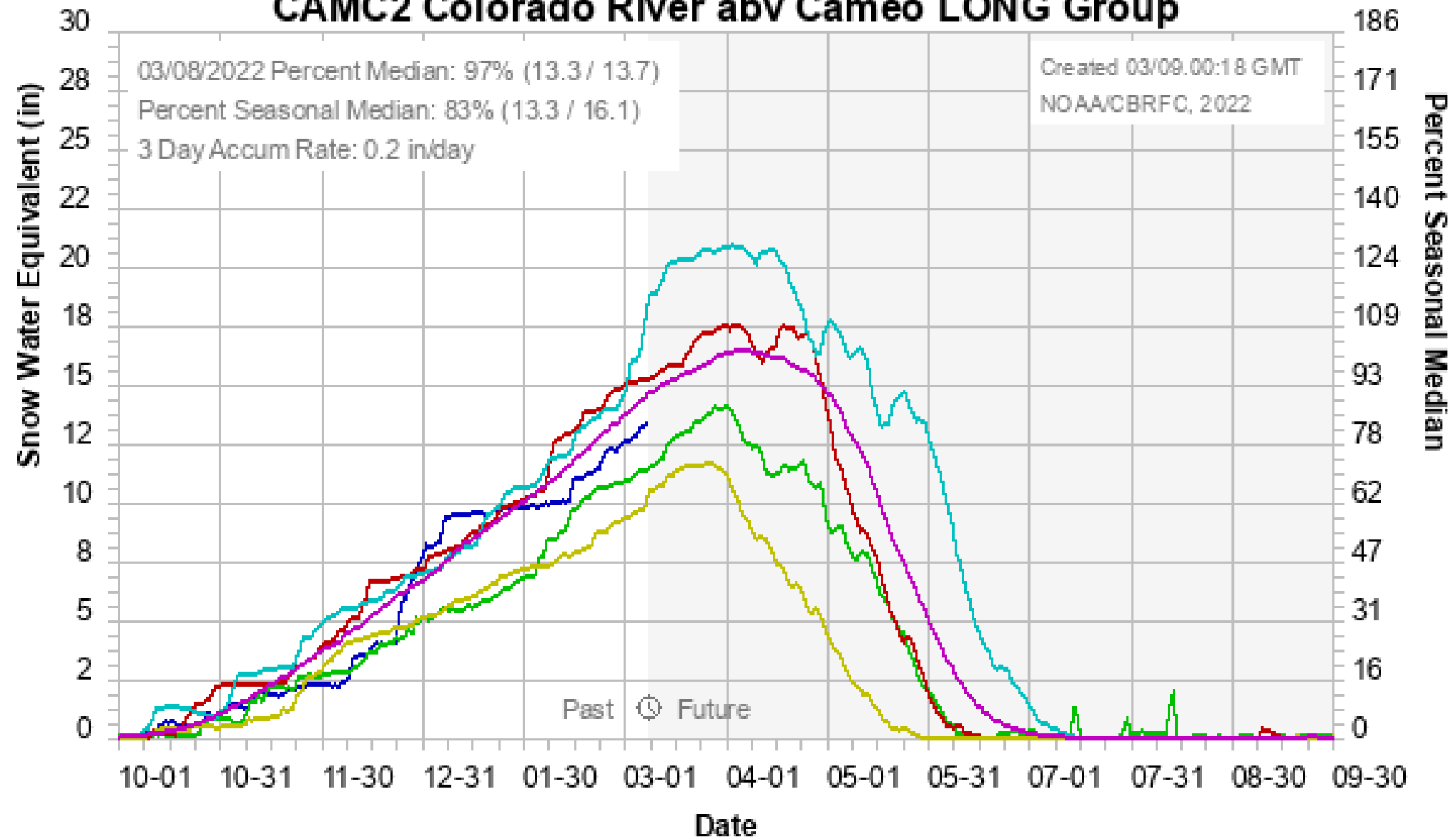
- Green - Green River **67%**
- Yampa - Deerlodge **82%**
- Colorado - Cameo **88%**
 - Dotsero **84%**
 - Granby **91%**
 - Willow Creek **99%**
 - Williams Fork **74%**
 - Wolford **65%**
 - Dillon **82%**
 - GMR **86%**
 - Ruedi **95%**
- Gunnison - Grand Junction **83%**
- San Juan - Bluff **66%**
- Powell **71%** (4.5 Maf)

CBRFC Modeled Snow and Water Supply Forecasts



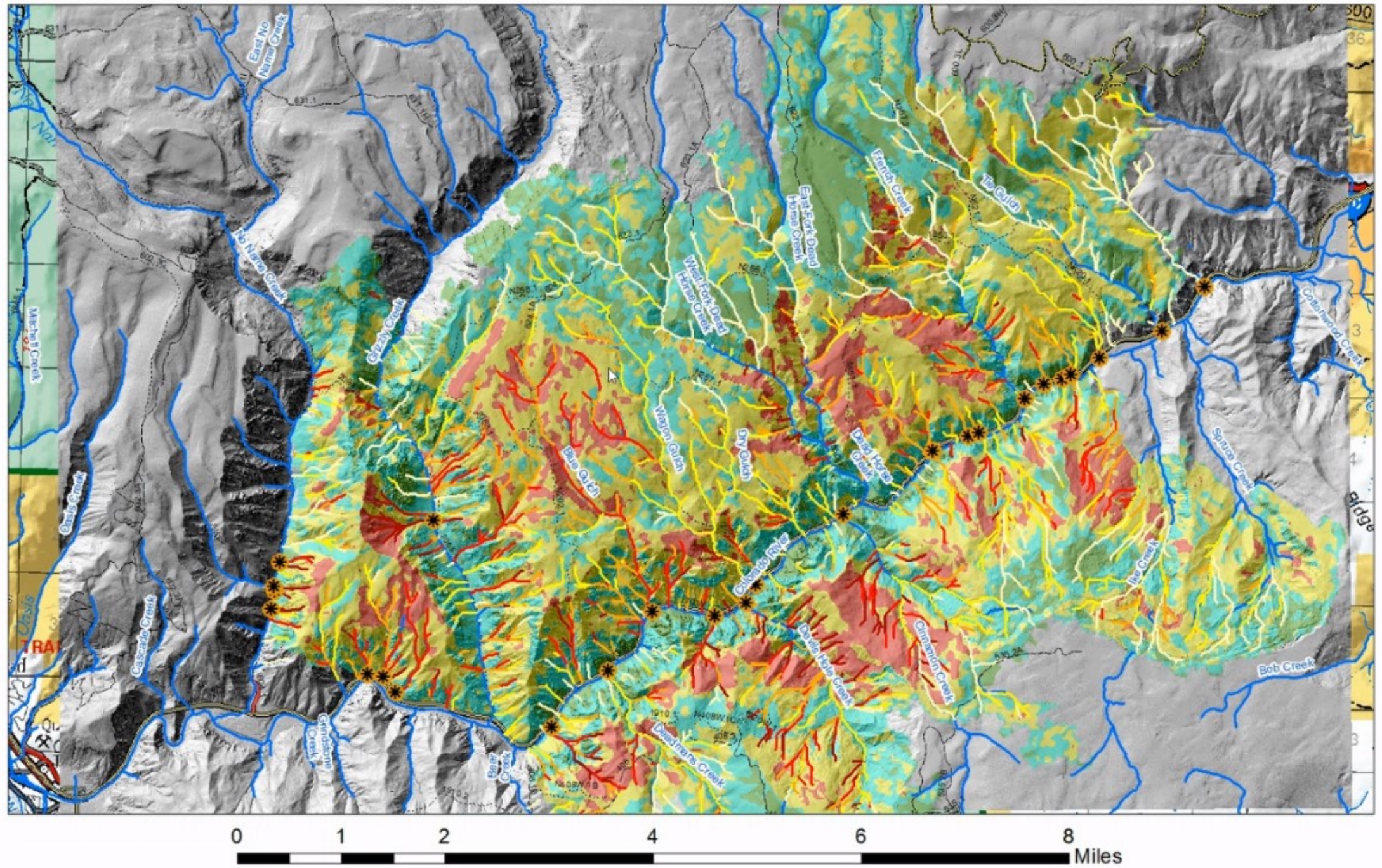
Colorado Basin River Forecast Center

CAMC2 Colorado River abv Cameo LONG Group



2022 2021 2020 2019 2002 Average 1991-2020

Soil Burn Severity, Debris Flow Probability and Observed Debris Flows



Questions?

