

## INTERIOR REGION 5 - MISSOURI BASIN

KANSAS, MONTANA, NEBRASKA, NORTH DAKOTA, SOUTH DAKOTA

### Map

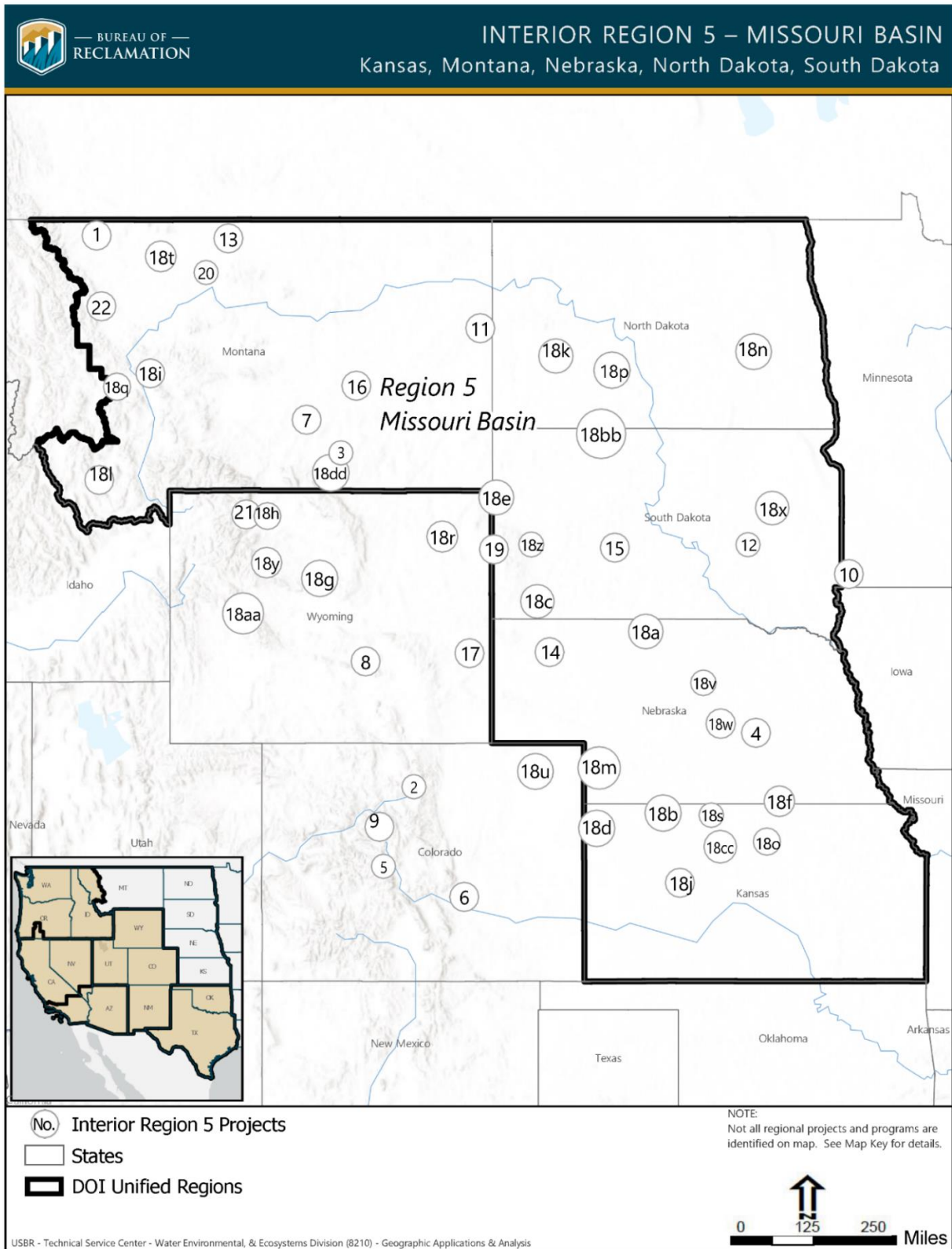


Figure 1 Interior Region 5 - Missouri Basin

## INTERIOR REGION 5 - MISSOURI BASIN

KANSAS, MONTANA, NEBRASKA, NORTH DAKOTA, SOUTH DAKOTA

### Map Key

#### MISSOURI BASIN PROJECs/PROGRAMS

1. Blackfeet Indian Water Rights Settlement<sup>1/</sup>
2. Colorado-Big Thompson Project<sup>2/</sup>
3. Crow Indian Water Rights Settlement<sup>1/</sup>
4. Endangered Species Recovery Implementation Program, Platte River
5. Fryingpan-Arkansas Project<sup>2/</sup>
6. Fryingpan-Arkansas Project – Arkansas Valley Conduit<sup>2/</sup>
7. Huntley Project
8. Kendrick Project<sup>2/</sup>
9. Leadville/Arkansas River Recovery Project<sup>2/</sup>
10. Lewis and Clark Rural Water System
11. Lower Yellowstone Project
12. Mid-Dakota Rural Water Project
13. Milk River Project & St. Mary Division
14. Mirage Flats Project
15. Mni Wiconi Project
16. Musselshell-Judith Rural Water System
17. North Platte Project<sup>2/</sup>
18. Pick-Sloan Missouri Basin Program
  - a. Ainsworth Unit
  - b. Almena Unit
  - c. Angostura Unit
  - d. Armel Unit<sup>2/</sup>
  - e. Belle Fourche Unit
  - f. Bostwick Division
  - g. Boysen Unit<sup>2/</sup>
  - h. Buffalo Bill Unit<sup>2/</sup>
  - i. Canyon Ferry Unit
  - j. Cedar Bluff Unit
  - k. Dickinson Unit
  - l. East Bench Unit
  - m. Frenchman-Cambridge Unit
  - n. Garrison Diversion Unit
  - o. Glen Elder Unit
  - p. Heart Butte Unit
  - q. Helena Valley Unit
  - r. Keyhole Unit<sup>2/</sup>
  - s. Kirwin Unit
  - t. Lower Marias Unit
  - u. Narrows Unit<sup>2/</sup>
  - v. North Loup Unit
  - w. North Platte Area<sup>2/</sup>
  - x. Oahe Unit
  - y. Owl Creek Unit<sup>2/</sup>
  - z. Rapid Valley Unit
  - aa. Riverton Unit<sup>2/</sup>
  - bb. Shadehill Unit
  - cc. Webster Unit
  - dd. Yellowtail Unit
19. Rapid Valley/ Deerfield Project
20. Rocky Boy's/ North Central Montana Rural Water System
21. Shoshone Project<sup>2/</sup>
22. Sun River Project

#### PROJECTS NOT INCLUDED ON MAP

1. Pick-Sloan Missouri Basin Program
  - a. Kansas River Area
  - b. Missouri Basin O&M

<sup>1/</sup> Indian Water Right Settlement efforts are noted on the map and key; however, these activities are anticipated to be satisfied in the budget year by allocations from the Indian Water Rights Settlement Completion Fund and/or the Reclamation Water Settlement Fund. Please refer to the Permanents chapter of this request for additional details.

<sup>1/</sup> Projects physically located in the Upper Colorado Basin but managed by the Missouri Basin.

## INTERIOR REGION 6 – ARKANSAS-RIO GRANDE-TEXAS GULF

OKLAHOMA, TEXAS, KANSAS

### MAP



Figure 1 Interior Region 6 - Arkansas - Rio Grande - Texas Gulf Basin Map

## INTERIOR REGION 6 – ARKANSAS-RIO GRANDE-TEXAS GULF

---

OKLAHOMA, TEXAS, KANSAS

### Map Key

#### ARKANSAS-RIO GRANDE-TEXAS GULF PROJECTS/PROGRAMS

1. Arbuckle Project
2. Canadian River Project
3. Lower Rio Grande Water Conservation Project
4. McGee Creek Project
5. Mountain Park Project
6. Norman Project
7. Nueces River Project
8. San Angelo Project
9. W.C. Austin Project
10. Washita Basin Project
11. Wichita Project (Cheney Division and Equus Beds Division )<sup>1/</sup>

#### PROJECTS NOT INCLUDED ON MAP

1. Pick-Sloan Missouri Basin Program
  - a. Missouri Basin O&M

<sup>1/</sup>Project is physically located in the Missouri Basin but managed by the Arkansas-Rio Grande-Texas Gulf region.

## INTERIOR REGION 7 - UPPER COLORADO BASIN

COLORADO, NEW MEXICO, UTAH, WYOMING

### Map

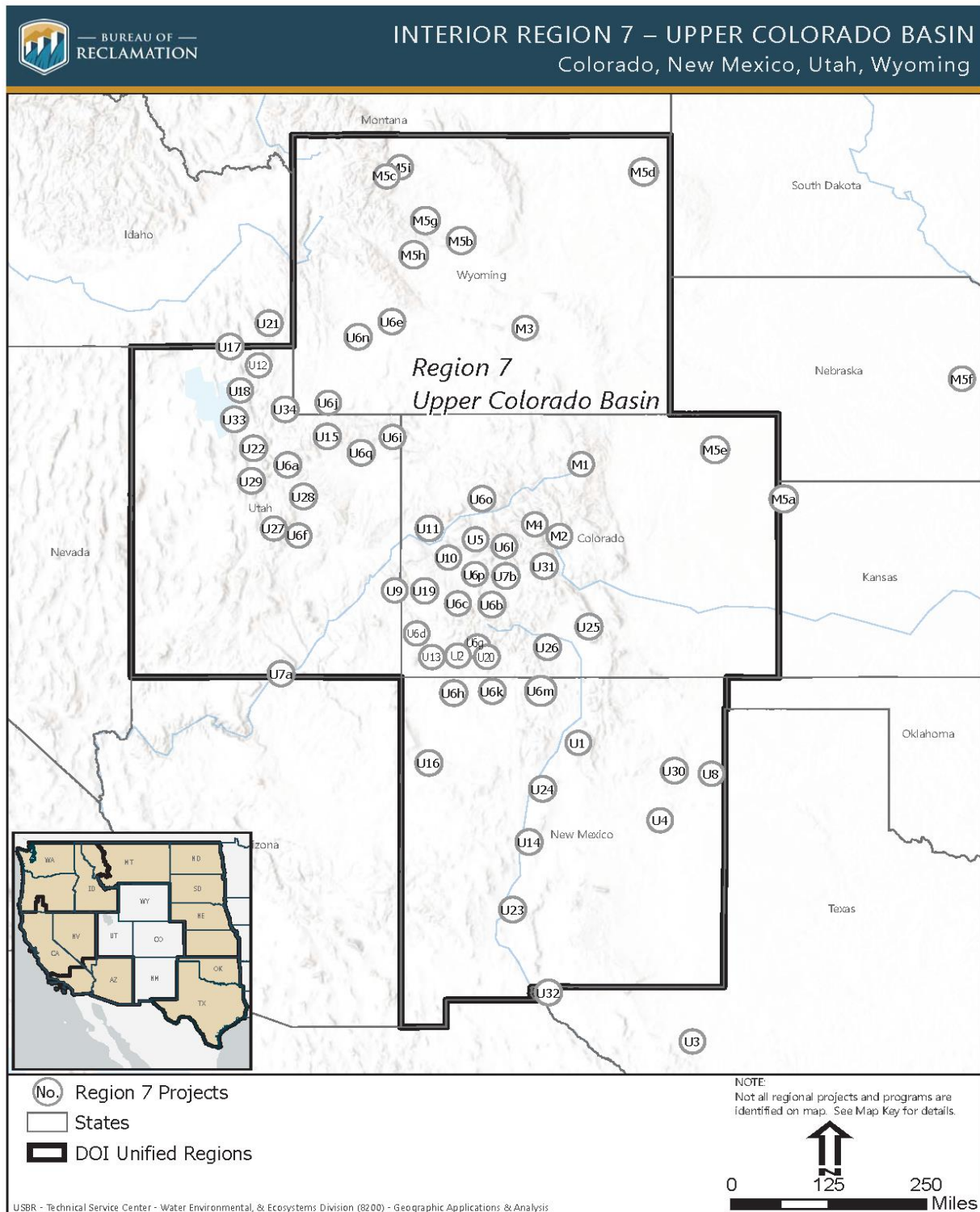


Figure 1 Interior Region 7 - Upper Colorado Basin Map



## INTERIOR REGION 7 - UPPER COLORADO BASIN

COLORADO, NEW MEXICO, UTAH, WYOMING

### Map Key

#### UPPER COLORADO BASIN

##### PROJECs/PROGRAMS

- U1. Aamodt/Taos Settlement<sup>1/</sup>
- U2. Animas-La Plata Project<sup>1/</sup>
- U3. Balmorhea Project
- U4. Carlsbad Project
- U5. Collbran Project
- U6. Colorado River Storage Project (CRSP)  
Section 5, Participating Projects
  - a. Bonneville Unit, Central Utah Project
  - b. Bostwick Park Project
  - c. Dallas Creek Project
  - d. Dolores Project
  - e. Eden Project
  - f. Emery County Project
  - g. Florida Project
  - h. Hammond Project
  - i. Jensen Unit, Central Utah Project
  - j. Lyman Project
  - k. Navajo Unit (\*Section 5 and 8)
  - l. Paonia Project
  - m. San Juan Chama Project
  - n. Seedskadee Project
  - o. Silt Project
  - p. Smith Fork Project
  - q. Vernal Unit, Central Utah Project
- U7. Colorado River Storage Project (CRSP),  
Section 8, Participating Projects
  - a. Glen Canyon Unit
  - b. Wayne N. Aspinall Storage Unit
- U8. Eastern New Mexico Rural Water System Project
- U9. Endangered Species Recovery Implementation Program
- U10. Fruitgrowers Dam Project
- U11. Grand Valley Project
- U11. Grand Valley Unit, CRBSCP Title II
- U12. Hyrum Project
- U13. Mancos Project
- U14. Middle Rio Grande Project
- U15. Moon Lake Project
- U16. Navajo Gallup Water Supply<sup>1/</sup>
- U17. Newton Project
- U18. Ogden River Project
- U19. Paradox Unit, CRBSCP, Title II
- U20. Pine River Project
- U21. Preston Bench Project

- U22. Provo River Project
- U23. Rio Grande Project
- U24. Rio Grande Pueblos Project
- U25. San Luis Valley Project – Closed Basin Division
- U26. San Luis Valley Project – Conejos Division
- U27. Sanpete Project
- U28. Scofield Project
- U29. Strawberry Valley Project
- U30. Tucumcari Project
- U31. Uncompahgre Project
- U32. United States/Mexico Border Issues Technical Support
- U33. Weber Basin Project
- U34. Weber River Project

<sup>1/</sup> Indian Water Right Settlement efforts are noted on the map and key; however, these activities are anticipated to be satisfied in the budget year by allocations from the Indian Water Rights Settlement Completion Fund and/or the Reclamation Water Settlement Fund. Please refer to the Permanents chapter of this request for additional details.

#### PROJECTS/PROGRAMS WITHIN THE UPPER COLORADO BASIN AND MANAGED BY THE MISSOURI BASIN (Narratives included in the Missouri Basin Tab)

- M1. Colorado-Big Thompson Project
- M2. Fryingpan-Arkansas Project
- M3. Kendrick Project
- M4. Leadville/Arkansas River Recovery Project
- M5. Pick-Sloan Missouri Basin Program
  - a. Armel Unit
  - b. Boysen Unit
  - c. Buffalo Bill Unit
  - d. Keyhole Unit
  - e. Narrows Unit
  - f. North Platte Area
  - g. Owl Creek Unit
  - h. Riverton Unit
  - i. Shoshone Project

## **INTERIOR REGION 7 - UPPER COLORADO BASIN**

---

COLORADO, NEW MEXICO, UTAH, WYOMING

### **REGION-WIDE PROJECTS NOT INCLUDED ON MAP**

1. Colorado River Compliance Activities
2. Colorado River Basin Salinity Control  
Program, Title II
3. Colorado River Water Quality Improvement  
Program
4. Upper Colorado River Operations Program

## INTERIOR REGION 8 - LOWER COLORADO BASIN

ARIZONA, CALIFORNIA, NEVADA

### Map

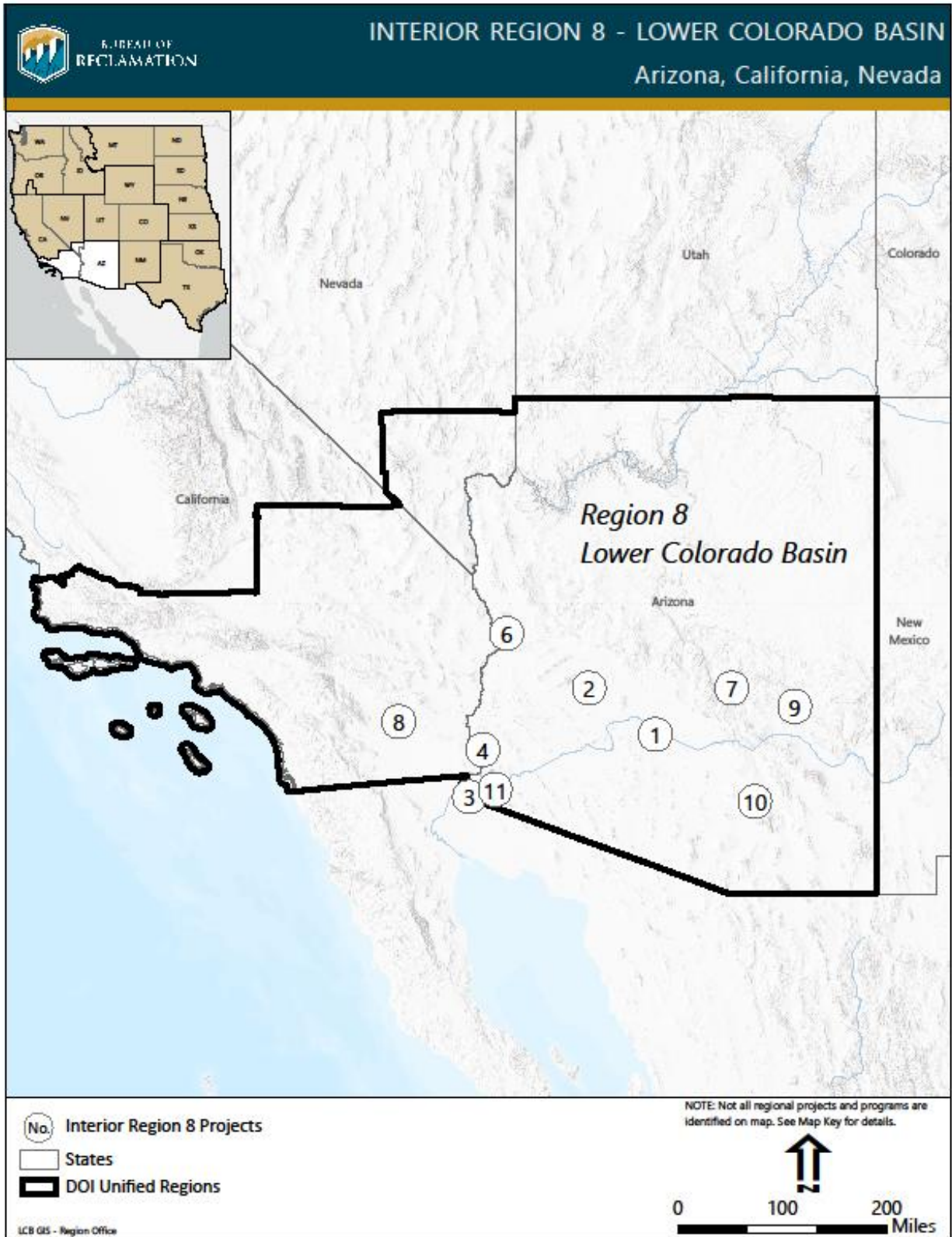


Figure 1 Interior Region 8 Lower Colorado Map



## **INTERIOR REGION 8 - LOWER COLORADO BASIN**

---

ARIZONA, CALIFORNIA, NEVADA

### **Map Key**

#### **LOWER COLORADO BASIN PROJECTS/PROGRAMS**

1. Ak-Chin Indian Water Rights Settlement Act Project
2. Central Arizona Project
3. Colorado River Basin Salinity Control Project – Title I
4. Colorado River Front Work and Levee System
5. Lake Mead/ Las Vegas Wash Program
6. Parker-Davis Project
7. Salt River Project
8. Salton Sea Research Project
9. San Carlos Apache Tribe Water Settlement Act
10. Southern Arizona Water Rights Settlement Act Project
11. White Mountain Apache
12. Yuma Area Projects

#### **PROJECTS NOT INCLUDED ON MAP**

1. Colorado River Water Quality Improvement Program
2. Lower Colorado River Operations Program
3. San Gabriel Restoration Fund

# INTERIOR REGION 9 – COLUMBIA-PACIFIC NORTHWEST

IDAHO, OREGON, MONTANA, WASHINGTON

## MAP

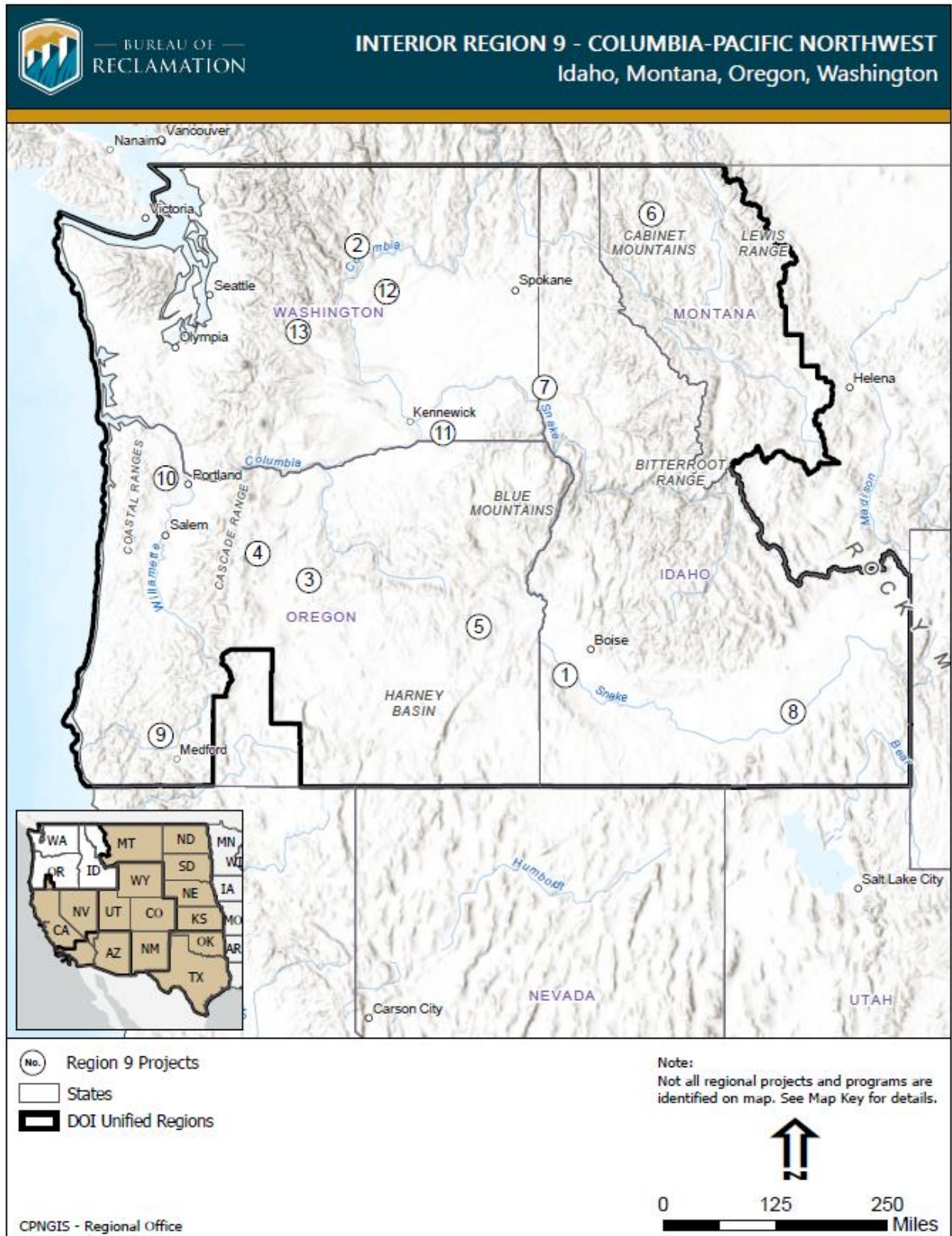


Figure 1 Interior Region 9 - Columbia-Pacific Northwest Map

## **INTERIOR REGION 9 – COLUMBIA-PACIFIC NORTHWEST**

---

IDAHO, OREGON, MONTANA, WASHINGTON

### **MAP KEY**

#### **COLUMBIA-PACIFIC NORTHWEST BASIN PROJECs/PROGRAMS**

1. Boise Area Projects
2. Columbia Basin Project
3. Crooked River Project
4. Deschutes Project
5. Eastern Oregon Projects
6. Hungry Horse Project
7. Lewiston Orchards Project
8. Minidoka Area Projects
9. Rogue River Basin Project, Talent Division
10. Tualatin Project
11. Umatilla Project
12. Washington Area Projects
13. Yakima Project
14. Yakima River Basin Water Enhancement Project

#### **PROJECTS NOT INCLUDED ON MAP**

1. Columbia and Snake River Salmon Recovery Columbia River System  
Endangered Species Act Implementation

## INTERIOR REGION 10 – CALIFORNIA-GREAT BASIN

CALIFORNIA, NEVADA, OREGON

### MAP



Figure 1 Interior Region 10 – California-Great Basin Map