



Council Development & Restoration Planning for the Moses Lake Watershed

WaterSMART: Cooperative Watershed Management Program Phase I
Grant Application Technical Proposal
Funding Opportunity Announcement No. BOR-DO-21-F003
January 19, 2021

Applicant:
Grant County Conservation District
1107 S Juniper Dr, Moses Lake, WA 98837

Project Manager:
Marie Lotz
1107 S Juniper Dr, Moses Lake, WA 98837
marie-lotz@conserveva.net
(509) 765-9618



Table of Contents

Table of Contents	2
Technical Proposal and Evaluation Criteria	4
Executive Summary	4
Project Location and Map	5
Technical Project Description	6
Applicant Category	6
Eligibility of Applicant	7
Goals	8
Approach	10
Evaluation Criteria	13
Evaluation Criterion A – Watershed Group Diversity and Geographic Scope	13
Sub-criterion A1 – Watershed Group Diversity	13
Sub-criterion A2 – Geographic Scope	15
Evaluation Criterion B – Addressing Critical Watershed Needs	16
Sub-criterion B1 – Addressing Critical Watershed Needs or Issues	16
Sub-criterion B2 – Strategies to Address Critical Watershed Needs or Issues	19
Evaluation Criterion C – Implementation and Results	20
Sub-criterion C1 – Project Implementation	20
Sub-criterion C2 – Relevant Federal, State, or Regional Planning Efforts	21
Evaluation Criterion D – Department of the Interior and Bureau of Reclamation Priorities	21
Department of Interior Priorities	21
Reclamation Priorities	22
Project Budget	23
Budget Proposal	23
Budget Narrative	24
Other Application Materials	25
Environmental and Cultural Resources Compliance	25
Required Permits or Approvals	27
Letters of Support	27
Official Resolution	27
Mandatory Federal Forms	28
References Cited	29

Appendices

30

- Appendix A - Watershed Project Area
- Appendix B - MLWC Strategic Thinking Session Document
- Appendix C - Project Tasks, Timeline & Costs
- Appendix D - MLWC Organizational Chart
- Appendix E - Moses Lake Watershed Planning Protocol
- Appendix F - Letters of Support
- Appendix G - Project Budget
- Appendix H - Official Resolution
- Appendix I - Mandatory Federal Forms

Technical Proposal and Evaluation Criteria

Executive Summary

Date: January, 19 2021

Applicant: Grant County Conservation District (GCCD)

City/County/State: City of Moses Lake, Grant County, Washington

The Grant County Conservation District (GCCD), in Moses Lake, Washington, is seeking funding as an Existing Watershed Group on behalf of the Moses Lake Watershed Council (MLWC) under Tasks A and B of the WaterSMART: Cooperative Watershed Management Program to support further development of the watershed group and completion of a Watershed Restoration Plan for the Moses Lake Watershed.

To complete these tasks, we propose to:

1. Hire a watershed coordinator;
2. Examine the current representation on the MLWC and expand participation to ensure that a diversity of watershed stakeholders are engaged;
3. Conduct outreach to new stakeholders;
4. Review and update MLWC's strategic documents;
5. Develop and implement a public education and outreach plan to engage broader stakeholders and communities in the planning process;
6. Identify water quality concerns and reasonable objectives;
7. Inventory the watershed project area and characterize the subwatersheds;
8. Analyze existing watershed data, identify data gaps and outline plans to gather data to inform future project planning;
9. Identify Best Management practices and projects necessary to treat identified resource concerns in the watershed; and
10. Identify partner roles, responsibilities, and timelines for project implementation, including regulatory and permitting requirements needed to complete the restoration projects.

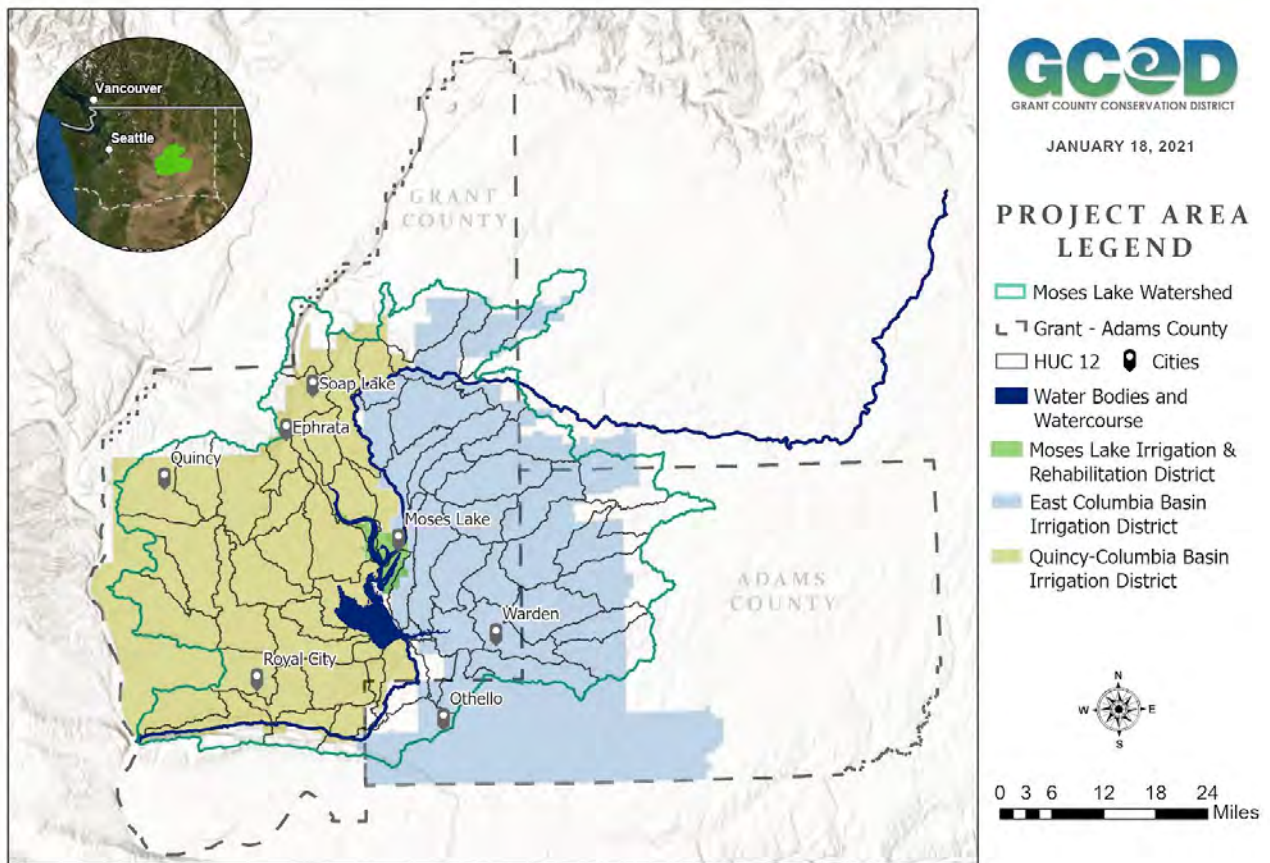
Grant funds will largely be used to hire a watershed project coordinator to manage the project and coordinate activities outlined above.

This project will take approximately two years and is anticipated to be completed by December 31, 2023. The proposed project area includes a Federal facility, the U.S. Bureau of Reclamation's (Reclamation) Columbia Basin Project (CBP). The CBP is the largest water reclamation project in the United States, serving 671,000 acres in central Washington.

Project Location and Map

The Moses Lake Watershed is located in east central Washington in the heart of the Columbia Basin. It spans Grant and Adams counties, including the City of Moses Lake, Othello, Warden, Soap Lake, Ephrata, Quincy, and Potholes Reservoir. The project area is 6,793 square miles. The 12-digit Hydrologic Unit Codes (HUC) in the project area are listed in Appendix A, along with a full map of the project area.

MOSES LAKE WATERSHED



Technical Project Description

Applicant Category

The Grant County Conservation District (GCCD) is applying on behalf of the MLWC as an Existing Watershed Group as defined under Section 6001(5) of the Cooperative Watershed Management Act. The GCCD initiated the MLWC, an ad-hoc collaborative entity, in 2018 with the purpose of facilitating locally-led water quality improvements in the Moses Lake Watershed. The GCCD leads the MLWC which has grown to include a diverse group of local, state, and federal stakeholders, including the Washington State Department of Ecology (Ecology), Moses Lake Irrigation and Rehabilitation District, Grant County Health District, City of Moses Lake, and Reclamation, along with representation from local tourism, businesses, and concerned citizens.

The MLWC was formed in direct response to persistent harmful algal blooms during summer months that impairs the public's use of Moses Lake and poses a great risk to public health and the health of pets and livestock. The MLWC is building on several decades of efforts studying Moses Lake's poor water quality dating back to the 1960's. Work conducted by the University of Washington and the EPA Clean Lakes Project in the 1980's generated a large body of data and recommendations for improving water quality. However, long-term management plans for the lake and watershed were not developed or implemented. Ecology issued a draft Total Maximum Daily Load (TMDL) plan in 2002, but the TMDL process was suspended in 2004 due to a lack of political and community support. Instead of resuming the TMDL process that failed in 2004, stakeholders, including state legislators, committed to supporting a collaborative, locally-driven effort to address sources of phosphorus pollution and improving lake water quality.

As part of the CBP, Reclamation began moving increased quantities of Columbia River irrigation water through the lake in the 1970's which had a significant dilution effect on the lake water quality for many years. The addition of low-nutrient Columbia River water shifted the lake from hypereutrophic in the 1960's and 1970's to eutrophic. Reclamation moved less Columbia River water through the lake in 2017 and 2018, which led to higher lake Total Phosphorus (TP) concentrations and dangerous cyanobacteria blooms, raising public attention to the underlying water quality issues that had been mitigated by lake dilution for over 40 years. In addition to public health and safety concerns, findings from a survey conducted by the MLWC in 2020 indicated community concerns regarding public health, reduced home values, and the negative economic impacts to the community due to a reduction in revenue from tourism.

The mission of the MLWC is to facilitate community led efforts to improve, protect, and preserve water quality in the watershed for present and future generations. The MLWC's diverse stakeholder engagement and activities to date are a testament to the political and community support needed to

move forward with improving water quality in the lake and watershed. Since its inception in 2018, the MLWC has:

- Convened a strategic planning session with a professional facilitator, resulting in a development of a mission statement and initial work plan;
- Developed a public information plan that included two public meetings, social media and meetings with associations and professional groups;
- Administered a detailed community economic survey with the assistance of the City of Moses, Chamber of Commerce, and local professionals, including a report of findings;
- Managed a Carp Removal Pilot Project funded through a Washington State Department of Ecology Terry Husseman Account grant; and
- Organized a successful carp derby in collaboration with Washington Department of Fish & Wildlife (WDFW) and the local bass club. Non-native common carp are bottom-feeders that adversely affect water quality by uprooting aquatic vegetation, stirring up nutrient-rich lake sediments and releasing phosphorus, which can fuel algae blooms.

Further, the MLWC's member organizations are engaged in and coordinate on the following relevant watershed activities:

- Moses Lake Cyanobacteria Lake Management Planning, funded by Ecology's Freshwater Algae Control Grant Program (ongoing);
- U.S. Geological Survey (USGS) Cooperative Groundwater Study (ongoing);
- The Odessa Groundwater Study (ongoing);
- Reclamation/Troutlodge Fish Hatchery drainage/flooding improvement projects (ongoing);
- Reclamation's Potholes Supplemental Feed Route (a regional priority), including:
 - West Channel Crab Creek extension
 - Port of Moses Lake, airport infrastructure updates
 - Delivery system infrastructure updates
 - Evaluating alternative Reclamation feed routes through Moses Lake Canal (proposed);
- Reclamation/USGS Adrian Sink water loss/quality study (forthcoming); and
- Reclamation CBP Cyanobacteria impact study (forthcoming).

Eligibility of Applicant

GCCD is a local, non-regulatory entity that works collaboratively with landowners and other stakeholders on natural resources issues under Chapter 89.08 of the Revised Code of Washington (RCW). In this capacity and specifically as the MLWC lead, GCCD has the proven ability to plan, implement and manage a project of this scale and scope which will significantly affect the quality and

quantity of the water in the watershed and the demonstrated capability to promote the sustainable use of water resources.

The GCCD initiated and formed the MLWC in 2018. Since its inception, GCCD has coordinated and facilitated the MLWC meetings and activities and has received and administered grants to support MLWC and water quality improvement activities. The GCCD will continue to serve as the lead entity coordinating and facilitating the MLWC and the proposed watershed restoration planning process, and the design and implementation of watershed restoration projects.

Goals

The mission of the MLWC is to facilitate community led efforts to improve, protect, and preserve water quality in the watershed for present and future generations. While the MLWC was originally formed with a focus on lake water quality, under this application, the Council will broaden its focus to include the Moses Lake Watershed.

Moses Lake Watershed Council's preliminary goals and objectives are detailed below. These goals and objectives were developed during the MLWC's Strategic Thinking Session held on June 17, 2019 (Appendix B).

Strategic Priority Area 1 – Watershed Council Organizational Development

Goal: Establish and maintain an effective, consensus-based organization of diverse stakeholders to inform, coordinate, and execute watershed planning, restoration, and management activities.

Objectives:

1. Establish an organizational structure (completed)
2. Obtain funding to organize and manage the council (ongoing)
3. Establish an effective watershed planning team with a high level of trust internally and with the public (ongoing)

Measures of Success:

1. Foundational documents (bylaws, agreements, etc.)
2. Funding level commensurate with technical assistance necessary to meet watershed planning goals and objectives
3. Watershed Council fully formed and recognized by stakeholders and community as the principal organization for watershed restoration with support from key members
4. Watershed plan development on track and meeting all milestones and goals

Strategic Priority Area 2 – Water Quality Data, Monitoring & Sustainable Results

Goal: Compile the data and information necessary to develop and implement a comprehensive watershed plan.

Objectives:

1. Research and synthesize existing lake and watershed studies and data (ongoing)
2. Establish quantifiable water quality thresholds to achieve and sustain over time
3. Determine what water quality monitoring will be necessary; develop plan
4. Establish partnerships and agreements with Federal, State, and County agencies that can provide specialized technical assistance

Measures of Success:

1. Sustained water quality that meets state standards
2. Staff fully trained on developing and evaluating water quality reports
3. Protocols developed for reporting the reduction of pollutants
4. Fully developed watershed plan that, when implemented, will result in water quality standards being met

Strategic Priority Area 3 – Public Outreach, Understanding & Participation

Goal: Inform, educate, and engage the public to foster local and regional support for watershed planning and future implementation strategies.

Objectives:

1. Develop and present pertinent information to elected officials annually (ongoing)
2. Develop a communications plan that will keep the public fully informed on all aspects of watershed planning
3. Citizens involvement and committed to watershed and lake restoration
4. Periodically host public meetings and/or events (ongoing)
5. Develop a program to engage the public in specific watershed and lake clean-up activities
6. Develop and implement public surveys to gauge level of awareness (ongoing)
7. Develop an urban conservation program to educate and encourage urban BMPs

Measures of Success:

1. Number of citizens participating in events and meetings
2. Public assistance with water quality testing
3. Level of support and understanding of issues from citizens and organizations
4. Number of stakeholder groups established

Strategic Priority Area 4 – Strategic Planning & Projects

Goal: Develop short- and long-term actions to guide watershed planning and implementation.

Objectives:

1. Obtain funding for MLWC work (ongoing)
2. Complete a thorough rapid watershed assessment to develop the tools and processes that will be used to write the watershed plan
3. Develop milestones and timelines
4. Establish process to identify and adapt to changes and needs (adaptive management)
5. Identify clear path and measurable outcomes with the people and means to complete
6. Develop a clear program of lake clean up that the general public understands and can be easily promoted
7. Develop a plan with short- and long-term action items and prioritized project list that moves toward a cleaner lake
8. Develop the Best Management Practices (BMPs) necessary to address water quality issues, that when implemented will and meet water quality standards throughout the watershed
9. Implement significant projects leading to significant improvement in the quality of the lake

Measures of Success:

1. Funding secured
2. Watershed plan developed
3. Best Management Practices identified and implemented
4. Actions implemented
5. Measureable water quality improvements

Approach

The GCCD is requesting funding to complete activities under Task A - Watershed Group Development and Task B - Watershed Restoration Planning for the MLWC. Our planned approach for completing these activities is provided in more detail below. The **Tasks, Timeline and Costs** are included as Appendix C.

Task A – Watershed Group Development

Under Task A, we propose to complete the following activities:

- 1. Hire a program coordinator and lead watershed planner**

The GCCD will hire a program coordinator and lead watershed planner to facilitate MLWC activities, including managing MLWC operations and planning activities outlined in the proposed scope of work described in this application.

2. Examine the current representation on the MLWC and expand participation, as needed

The existing MLWC has representation from many local and regional stakeholders. However, the expansion of stakeholder representation may be necessary to develop a comprehensive Watershed Management and Restoration Plan and for the community to further develop ownership of planning and implementation efforts.

The GCCD proposes to examine the current representation on the MLWC, identify potential stakeholders that are not currently represented and expand participation to ensure that a diversity of watershed stakeholders are engaged, as needed, to refine the scope and desired outcomes of the watershed planning process.

3. Conduct outreach to new stakeholders

Once the current MLWC representation is examined and additional potential stakeholders are identified, GCCD will lead the MLWC in conducting outreach to new stakeholders. The outreach approach will depend on the individual or organization we are seeking to engage and may include, but not be limited to, one-on-one contact, community meetings, and social media outreach.

4. Develop, review and update key MLWC documents

The MLWC has a strong foundation, however we acknowledge that further work needs to be done to strengthen and solidify the council's structure and operations. To assist with this, GCCD will facilitate a process to update the documents developed during the MLWC's Strategic Thinking Session (Appendix B) and will facilitate the development of organizational documents and the formation of subcommittees. These documents will include but may not be limited to a charter and Memorandum of Understanding among primary stakeholders. These documents will clarify roles, responsibilities, decision making processes, and management of funds.

The current organizational structure of the MLWC, including the proposed Watershed Planning Team, is included in this application as Appendix D.

5. Develop and implement a Public Education and Outreach Plan

As part of the expansion of the MLWC, GCCD and the MWLC will develop and implement a public education and outreach plan to engage broader stakeholders and communities in planning and implementation processes. This may include one-on-one outreach to agencies and organizations, sub-watershed-based community meetings or workshops, developing an

urban stewardship program and materials, and facilitating stakeholder workshops to expand and diversify watershed group membership.

Task B – Watershed Restoration Planning

The MLWC will undertake a comprehensive watershed planning process, utilizing the Moses Lake Watershed Planning Protocol as a guide (Appendix E). The lead watershed planner will oversee the watershed restoration planning process and will produce the final watershed management and restoration plan, with input from the MLWC, technical partners, and the public.

Under Task B, we propose to complete the following activities:

Step 1 – Identify water quality concerns, opportunities and interests

The watershed project coordinator will begin the process of developing the watershed plan by working with the MLWC, other stakeholders and public to further identify water quality concerns, opportunities and interests. A list of questions identified in the planning protocol (Appendix E) will be used to help guide this step. Landowners and the public will be notified and engaged at this stage of the planning process through public presentations, tours, watershed-based workshops, etc.

Step 2 – Determine reasonable, yet meaningful, water quality objectives

The watershed project coordinator will work with the MLWC and technical partners to determine reasonable, yet meaningful, water quality objectives for the watershed. Designated uses defined in Washington’s water quality standards will be considered. Objectives will be quantifiable in order to measure progress. Objectives may include maintain/improve the integrity of the waterbody by preventing future degradation; reduce pollutant load to an acceptable level or to the allocation assigned in a TMDL; measurably improve in-stream habitat conditions; measurably improve in-lake habitat conditions; meet/maintain the designated use for the waterbody; and measurably improve recreational opportunities and economic benefit.

Step 3 – Develop a Watershed Management and Restoration Plan

The watershed lead planner, in collaboration with the MLWC Planning Team and technical partners will draft the watershed plan, involving the following activities:

1. Conducting public outreach to stakeholders through all steps of the planning process;
2. Identifying partner roles and responsibilities for plan development;
3. Inventorying the watershed project area and characterizing the sub-watersheds based on land use, baseline level of resource condition, resource management activities, ownership, soils, climate, and sources of nutrient contributions to surface waters;

4. Analyzing existing watershed and lake data, identifying data gaps and outlining plans to gather data to inform future project planning;
5. Develop suites of specific BMPs that will address water quality hazards across all land uses within the watershed;
6. Formulating and evaluating various alternatives/solutions;
7. Conducting a watershed plan economic analysis;
8. Identifying partner roles and responsibilities for project and program implementation; permitting and other regulatory requirements to complete the restoration projects; and
9. Writing the plan.

Evaluation Criteria

Evaluation Criterion A – Watershed Group Diversity and Geographic Scope

Sub-criterion A1 – Watershed Group Diversity

The Moses Lake Watershed and greater Columbia Basin consists of multiple stakeholders that affect and/or are affected by the quality and quantity of water within the watershed. These stakeholders include agricultural producers, irrigation districts, real estate and development interests, recreation and tourism, environmental interests, municipal water supplies, private property owners, business owners, Federal, state and local governments, and tribes.

The current MLWC includes a diverse representation of affected stakeholders within the watershed. Many of these agencies have a stake in and regulatory authority over water management in the lake and watershed. Current MWLC representation includes:

- Grant County Conservation District
- Bureau of Reclamation
- Washington State Department of Ecology
- Washington Department of Fish and Wildlife
- Moses Lake Irrigation and Rehabilitation District
- City of Moses Lake
- Grant County Health District
- Grant County Tourism Board
- Local business owners
- Interested citizens

The GCCD will work in coordination with current MLWC members to evaluate stakeholder representation and to expand participation as needed to more fully represent the diversity of interests in the watershed. It is anticipated that future stakeholder representation will expand to include additional members from the agricultural sector, public health community, local businesses and associations, irrigation districts, environmental organizations, state and federal agencies, and affected tribes.

The GCCD will reach out to existing and emerging watershed groups in the greater Columbia Basin to ensure all water quality and associated water quantity monitoring, planning, and project implementation efforts are coordinated. Initially, GCCD proposes to contact and invite the following agencies, irrigation districts, and affected tribes to participate in the MLWC and the watershed planning process:

- Grant County
- Adams County
- Washington State Department of Agriculture
- Natural Resources Conservation Service
- Washington State Department of Natural Resources
- South Columbia Basin Irrigation District
- East Columbia Basin Irrigation District
- Quincy-Columbia Basin Irrigation District
- Columbia Basin Development League
- Columbia Basin Sustainable Water Coalition
- Yakama Nation
- Confederated Tribes of the Colville Reservation

Other individuals and/or organizations working on water and land management activities in the larger basin will be identified during the project development period. To ensure all affected stakeholders are identified and engaged to the greatest extent possible, the GCCD and MLWC will conduct one-on-one outreach to agencies or organizations that have been identified as watershed stakeholders, hold subwatershed-based community meetings or workshops, and use traditional and social media platforms and newsletters to notify and inform the community of planning activities and opportunities to get involved. The MLWC will facilitate stakeholder workshops to expand and diversify watershed group membership.

Please see attached letters of support from current and potential future MLWC members in Appendix F.

Sub-criterion A2 – Geographic Scope

The Moses Lake Watershed is located in Grant and Adams counties, Washington in the heart of the Columbia Basin (see map, Appendix A). The watershed encompasses over a million acres, predominantly including irrigated and dryland agriculture, shrub steppe habitat, rural communities, and industrial and urban development around the city centers. The proposed project area includes Reclamation’s CBP. The CBP serves approximately 671,000 acres in east central Washington and is a major component of irrigation water delivery and management in the Moses Lake Watershed. Reclamation is an important partner in watershed restoration planning. The CBP not only impacts water quality and groundwater, but can also be a key player in ongoing water quality that could affect the future delivery of safe irrigation supplies to irrigation districts. Cyanobacteria blooms in Moses Lake and Potholes Reservoir have the potential to affect the irrigation water delivered to the southern irrigation districts, posing a food security risk.

As described in **Watershed Group Diversity** above, the current MLWC represents stakeholders that are affected by water quality and quantity issues, as well as those that have a stake in or regulatory authority over land and water management within the watershed. County and irrigation district boundaries are depicted in the project area map in Appendix A. See tables below for existing stakeholders and stakeholders to be targeted for outreach.

Under Task A, we propose to expand stakeholder representation on the council to ensure that a diversity of stakeholders throughout the watershed are represented in the planning process. This is detailed in the **Project Approach**. We believe that by expanding stakeholder representation to encompass the watershed project area, we will be able to more effectively identify and implement lasting solutions to the interconnected water resource challenges in the watershed.

Existing MLWC Members & Engaged Watershed Stakeholders	Geographic Reach
Grant County Conservation District	Grant County; Adams County (partial)
Bureau of Reclamation	Columbia Basin Project
Washington State Department of Ecology	Statewide
Washington Department of Fish and Wildlife	Statewide
Moses Lake Irrigation and Rehabilitation District	District (see map)
City of Moses Lake	City
Grant County Health District	Grant County (see map)
Grant County Tourism Board	Grant County (see map)

Local business owners	City and County
Interested citizens	City and County

Potential Future MLWC Members & Stakeholders Targeted for Outreach	Geographic Reach
Grant County	County (see map)
Adams County	County (see map)
Washington State Department of Agriculture	Statewide
Natural Resources Conservation Service	Statewide
Washington State Department of Natural Resources	Statewide
South Columbia Basin Irrigation District	District
East Columbia Basin Irrigation District	District (see map)
Quincy-Columbia Basin Irrigation District	District (see map)
Columbia Basin Development League	Entire project area
Columbia Basin Sustainable Water Coalition	Entire project area
Yakama Nation	Extent to be determined
Confederated Tribes of the Colville Reservation	Extent to be determined

Evaluation Criterion B – Addressing Critical Watershed Needs

Sub-criterion B1 – Addressing Critical Watershed Needs or Issues

The critical water resource issues within the Moses Lake Watershed and the greater Columbia Basin are water quality and water quantity - both surface and groundwater.

The MLWC's primary focus has been on surface water quality in the watershed. However, we are quickly learning about the interconnectedness between surface and groundwater quality and quantity and the need to coordinate watershed management and restoration efforts more holistically to

address our primary objectives of improving water quality in Moses Lake. The watershed's critical issues and needs will be more fully examined with affected stakeholders during Task A - Watershed Group Development and Task B - Watershed Restoration Planning.

The predominant watershed issues and needs are outlined below.

Surface Water Quality

Moses Lake experiences persistent cyanobacteria blooms during summer months. *Microcystis* toxicity testing in 2019 and 2020 confirmed that blooms were toxic, impairing the public's use of the lake. Cyanobacteria blooms are fueled by the eutrophic state of the lake resulting from a century of human land use in the watershed, primarily agricultural production and associated irrigation and fertilizer management. Besides agriculture, external sources of nutrients include fish hatcheries, septic systems, stormwater, and residential sources. In addition to external sources of phosphorus, the cycling of legacy phosphorus in the lake sediments continue to fuel algal growth. Invasive common carp populations in the lake stir up lake sediments, introducing phosphorus back into the water column, making it available for increased algae growth, as well another non native aquatic vegetation. Shoreline development around Moses Lake and its tributaries has further degraded the functions and condition of riparian and wetland ecosystems.

Cyanobacteria blooms in Moses Lake and Potholes Reservoir have the potential to affect the irrigation water quality delivered to the southern irrigation districts of the CBP, posing a food security risk.

Groundwater-Surface Water Interactions

Groundwater discharging to Moses Lake has been identified as the major source of phosphorus loading, either as distributed discharge along the lake shoreline or from spring runoff events, or poor irrigation water management practices that discharges to streams draining into Moses Lake. Carrol (2006) estimated 25% of the total phosphorus input to Moses Lake was from groundwater discharging from Rocky Ford Spring.

Groundwater hydrology in the Moses Lake area has been greatly affected by the development of the CBP. Early in the development of the canal system, Mundorff et al (1952) noted that flow discharging from Rocky Ford Spring and Creek correlated with seasonal deliveries of irrigation waters; the highest flows occurring during the peak irrigation deliveries while lowest flows were in winter months after seasonal water deliveries ended. Currently the CBP diverts roughly 2.5-million acre-feet of water annually from the Columbia River to irrigate approximately 700,000 acres of farmland. At times during the irrigation season Moses Lake is used as part of CBP conveyance system to move irrigation water to farms in the southern areas of the CBP. Seepage from irrigation canals can average up to about five inches per day per square foot of wetted perimeter (Drost and others, 1997). Such seepage and recharge beneath irrigated farmlands are substantial sources of

groundwater recharge in this area. Since the onset of surface-water irrigation, groundwater levels have risen roughly 200 feet in parts of the Quincy Basin (Franz and others, 2018).

Climate Change

Naturally warm, dry, and windy conditions in the Columbia Basin contribute to cyanobacteria blooms; wind energy contributes to lake bottom sediment disturbance resulting in phosphorus entering the water column fueling algae growth. Climate change is anticipated to affect the timing and duration of storm events which is predicted to affect growing seasons, storm water discharge to streams and lakes, and also affect water delivery demands. A Reclamation Columbia River Basin Climate Impact Assessment (2016) recommended more in-depth investigations of watershed sub-basins. While the Watershed Restoration Plan is not intended to be a specific climate assessment or mitigation plan, it is anticipated that BMPs identified in the plan will also contribute to guide climate change mitigation and adaptation efforts.

Aquifer Depletion

The Moses Lake watershed lies above and within the Odessa Subarea aquifer. This aquifer is in rapid decline and nearly depleted due to the over-appropriation of the ancient confined aquifer system. In nearly half of the production wells in the Odessa Subarea, groundwater levels have dropped by more than 100 feet and as much as 200 feet since 1981. Studies indicate that if radical changes are not implemented, continued depletion of the aquifer will result in complete loss of the resource by as early as 2022 in some areas.

This critical regional issue is largely being addressed through the Odessa Groundwater Replacement Program implemented by Reclamation, Washington State Department of Ecology, and the East Columbia Basin Irrigation District, with large support from other local stakeholders and legislators. Stakeholders, including the Columbia Basin Development League, Lincoln Conservation District, GCCD, Washington State University, local municipalities, and others are also involved with monitoring groundwater levels within the proposed watershed area.

The GCCD and MLWC will also be reaching out to and engaging the existing and emerging local watershed management groups who are focused on monitoring and addressing aquifer depletion in the watershed to ensure watershed management and restoration efforts are fully coordinated.

The primary needs in the watershed have been identified as:

- Agricultural viability, food security
- Consistent delivery of irrigation water to southern irrigation districts that meets food safety standards
- Safe recreation for humans

- Water quality that is safe for wild and domestic animal use
- Water quality that supports local and regional tourism and economic development
- Irrigation and fertilizer management on agricultural lands
- Irrigation flow coordination with Reclamation
- Sustainable aquifer management
- Urban conservation
- Riparian and wetland habitat protection and enhancement

Sub-criterion B2 – Strategies to Address Critical Watershed Needs or Issues

The MLWC plans to positively contribute to the management of the issues and needs in the watershed through the activities described in this proposal, summarized below.

Stakeholder Outreach and Partnership Building

The MLWC will address critical watershed issues by building off previous partnership building efforts to include a broader diversity of stakeholders in the watershed planning process. Previous partnership building efforts began in 2018 with the formation of the multi-agency MLWC and Strategic Thinking Session (Appendix B). As described in the **Project Approach**, GCCD will lead the MLWC in conducting outreach to new stakeholders. This will consist of one-on-one outreach to agencies or organizations that have been identified as watershed stakeholders, subwatershed-based community meetings or workshops, and using traditional and social media platforms and newsletters to notify and inform the community of planning activities and opportunities to get involved. The MLWC will facilitate stakeholder workshops to expand and diversify watershed group membership. It is anticipated that future stakeholder representation will expand to include additional members from the agricultural sector, public health community, local businesses and associations, irrigation districts, environmental organizations, state and federal agencies, and affected tribes. See **Watershed Group Diversity** for a list of additional stakeholders that will be invited to participate in the planning process.

With the expansion of the MLWC stakeholders, GCCD will facilitate a process to update the documents developed during the MLWC's Strategic Thinking Session (Appendix B) and will facilitate the development of organizational documents and the formation of subcommittees. These documents will include but may not be limited to a charter and Memorandum of Understanding among primary stakeholders. These documents will clarify roles, responsibilities, decision making processes, and management of funds.

Current stakeholder representation on the MLWC illustrates the balanced stewardship approach to managing watershed resources for a multitude of purposes. The intention of expanding the MLWC

and coordinating with other organizations and resources planning efforts is to maintain this balanced approach and have it reflected in the resulting Watershed Restoration Plan.

Watershed Restoration Planning

Gathering information on critical watershed issues and needs will occur through stakeholder dialogue as part of the comprehensive watershed planning process described in the **Project Approach**. The MLWC will utilize the Moses Lake Watershed Planning Protocol (Appendix E) as a guide to develop a comprehensive list of water quality concerns, opportunities and interests; determine reasonable water quality objectives; and the follow steps to develop a Watershed Restoration Plan.

The proposed watershed restoration planning process will utilize best available science and technology to identify, quantify, and address water quality and quantity resource concerns with appropriate BMPs specifically developed to address critical watershed issues. It will fully address the need for sustainable land and water management in the Moses Lake Watershed.

The GCCD will lead the Watershed Planning Team through a process to evaluate various alternatives to address watershed issues and prioritize them for implementation in the Watershed Restoration Plan. Feasibility for short- and long-term projects will be assessed by comparing cost-benefit ratios, regulatory requirements, community support and other factors outlined in the Moses Lake Watershed Planning Protocol (Appendix E).

The Watershed Restoration Plan will build off of previous and ongoing planning efforts described in **Applicant Category**.

Evaluation Criterion C – Implementation and Results

Sub-criterion C1 – Project Implementation

Please refer to the proposed project **Project Approach** and **Project Tasks, Timeline, and Costs** (Appendix C) for details on the proposed work, including major tasks, milestones, and dates. Project costs associated with the proposed project are outlined in the **Project Budget** (Appendix G).

Sub-criterion C2 – Relevant Federal, State, or Regional Planning Efforts

The MLWC watershed restoration planning process will coordinate with and complement the following Federal, state and regional planning efforts:

- Odessa Subarea Special Study - Odessa Groundwater Replacement Program
- Columbia Basin Sustainable Water Coalition
- USGS/Reclamation Adrian Sink water loss/quality study
- Reclamation's CBP Cyanobacteria impact study
- Reclamation's Potholes Supplemental Feed Route (a regional priority), including:
 - West Channel Crab Creek extension
 - Port of Moses Lake, airport infrastructure updates
 - Delivery system infrastructure updates
 - Evaluating alternative Reclamation feed routes through Moses Lake Canal (proposed)
- USGS Cooperative Groundwater Study
- Groundwater Management Area (GWMA) studies
- NRCS Conservation Programs
- Ecology Freshwater Algae Grant Program Cyanobacteria/Lake Management Plan
- Columbia Basin Coalition water purveyors
- Moses Lake Irrigation and Rehabilitation District lake water quality monitoring
- City of Moses Lake Stormwater Management Program

Evaluation Criterion D – Department of the Interior and Bureau of Reclamation Priorities

This proposal supports the following Department of Interior and Reclamations priorities:

Department of Interior Priorities

1. *Creating a conservation stewardship legacy second only to Teddy Roosevelt*

The proposed watershed restoration planning process will utilize best available science to identify, quantify, and address water quality and quantity resource concerns with appropriate BMPs specifically developed to address critical watershed issues. It will fully address the need for sustainable land and water management in the Moses Lake Watershed. This includes coordinating directly with Reclamation on the timing and quantity of how irrigation water is delivered through Moses Lake and the Potholes Reservoir.

2. *Utilizing our Natural Resources*

Moses Lake is the third largest lake in Washington with a surface area of 6,800 acres. The Lake provides wildlife habitat, recreation, and water supply. The climate of the area is characterized as semi-arid with annual precipitation ranging from 6-10 inches per year making early attempts at dryland farming in the region circa 1900 largely unsuccessful. Development of Reclamation's CBP in the early 1950s brought abundant water for irrigation and the area is now the center of a highly productive agricultural region. A Watershed

Restoration Plan for the Moses Lake Watershed will help ensure water management efforts are coordinated, resulting in more efficient and effective water resource protection plans. This will result in long term economic viability and strategies to move deep well irrigators to alternative sources of water, ensuring agriculture viability and food security.

3. *Restoring Trust with Local Communities*

The underlying water quality issues resulting in persistent Harmful Algal Blooms in Moses Lake are a culmination of nearly a century of human land use in the watershed. The problems didn't arise overnight, but were masked for many years by the dilution effect of CBP irrigation water in Moses Lake. Addressing the issues will require the dedication and support of the communities in the watershed and a plan to guide both in-lake and watershed restoration efforts. Part of the proposed **Project Approach** is developing a Public Education and Outreach Plan to inform, educate, and engage the public in the planning process. Implementing the resulting Watershed Restoration Plan will also require the support and commitment of the communities. Securing community buy-in early in the process will help develop trust and ensure that the Plan is representative of the watershed stakeholders and implementation of the projects supported by the community.

4. *Modernizing our Infrastructure*

Columbia River water, delivered through Reclamation infrastructure, is a major source of flow to Moses Lake. The CBP includes over 300 miles of main canals, about 2,000 miles of laterals, and 3,500 miles of drains and wasteways within the project. Currently, the CBP diverts roughly 2.5-million acre-feet of water annually from the Columbia River to irrigate approximately 700,000 acres of farmland. Irrigation water routed through Moses Lake and the Potholes reservoir varies from 80,000 ac-ft to 170,000 ac-ft annually. The MLWC has an excellent working relationship with the BOR Ephrata field office and are currently discussing alternative routing options through Moses Lake. Reclamation is also engaged in groundwater studies funded in part by an Ecology grant with Grant County Conservation District. The purpose of the study is to evaluate phosphorus movement that varies with changes in Reclamation water delivery to the lake. Upcoming studies will accelerate the study of these issues as outlined in **Applicant Eligibility**, which will support the development of the Watershed Restoration Plan .

Reclamation Priorities

1. *Increase Water Supplies, Storage, and Reliability under WIIN and other Authorities*

The central Columbia Basin is a significant agricultural area contributing to the regional economy and national food security. Agriculture flourishes in the Columbia Basin due to the abundance of water supplied by the CBP, fertile soils, and a 280-day growing season. Reclamation is a member of the MLWC and the project proposed will contribute to furthering the coordination and improvement of the quantity and quality of irrigation supplies delivered to the region's agricultural producers.

2. *Improve Water Supplies for Tribal and Rural Communities*

The MLWC will engage with regional tribes and watershed communities under Task A - Watershed Group Development, as described in the **Project Approach**. Addressing the critical watershed issues will require the dedication and support of the communities in the watershed. Part of the project **Project Approach** is developing a Public Education and Outreach Plan to inform, educate, and engage the public in the planning process. Implementing the resulting Watershed Restoration Plan will also require the support and commitment of the communities. Securing community buy-in early in the process will help develop trust and ensure that the Plan is representative of the watershed stakeholders and implementation of the projects supported by the community.

Project Budget

Budget Proposal

A detailed budget is included as Appendix G, including supply and bulk mailing estimates.

BUDGET ITEM DESCRIPTION	TOTAL COST
Salaries and Wages	
GCCD Employees	\$76,365
Fringe Benefits	
GCCD Employees	\$11,778
Travel	
GCCD Travel Costs	\$460
Supplies and Materials	
	\$2,306
Contractual	
	\$0
Other	
	\$0
Subawards	
	\$0
TOTAL DIRECT COSTS	\$90,909
Indirect Costs	
<i>GCCD 10% de minimis</i>	\$9,091
TOTAL PROJECT COSTS	\$100,000

FUNDING SOURCES	COST SHARE PERCENTAGE
Recipient Funding	\$50,000
Reclamation Funding	\$100,000

Budget Narrative

A. Salaries and Wages (2 Years)

Total: \$76,365.00

Program Coordinator currently oversees the program and will spend 30% of their time facilitating meetings, work with the MLWC, coordinate and organize all public meetings, send out agendas and minutes, create outreach materials, maintain MLWC newsletter-website-Facebook, maintain budget records. This individual's salary is \$22,905.00 and will be covered for the 24 months of the contract.

The **Lead Watershed Planner** will spend 70% of their time developing the Moses Lake Watershed Restoration Plan and providing periodic reports to the MLWC. This individual's salary is \$53,460.00 and will be covered for the 24 months of the contract.

B. Fringes Benefits (2 Years)

Total: \$11,777.77

FICA will be paid for all salaries: $\$76,365.00 \times .0765 = \$5,841.92$.

Unemployment cost is $\$76,365.00 \times .068 = \$5,192.82$

Labor and Industries cost is $1,697 \text{ hrs} \times .2543 = \431.55

Washington State Family Medical Leave cost is $76,365.00 \times .004 = \305.46

C. Travel (2 Years)

Total: \$460.00

The staff is expected to travel around the county to attend MLWC meetings, public informational meetings, and for providing updates to the City of Moses Lake, Grant County Commissioners, and Legislators. The agency reimbursable rate is 0.575.

Lead Watershed Planner 18 miles $\times .575 = \$10.35$; Month trip for monitoring $10.35 \times 24 \text{ months}$; Total 248.40

Lead Watershed Planner/ Program Coordinator 10 miles $\times 0.575 = \$5.75$; Monthly MLWC $\$5.75 \times 24 \text{ months}$; Total \$138.00

Lead Watershed Planner/ Program Coordinator 2 miles $\times 0.575 = \$1.15$; Monthly public information meeting $\$1.15 \times 24 \text{ months}$; Total \$27.60

Program Coordinator 44 miles x .575 = \$25.30; \$25.30 x 2.5; Total 63.25

D. Supplies and Materials

Total: \$2,306.32

ASUS ROG STRIX 512 GB laptop for use by Program Coordinator - \$840.00

Microsoft Office for installation on ASUS ROG laptop for Program Coordinator - \$115.00

Brochures developed by Program Coordinator for MLWC outreach – 2500 x \$0.13 = \$325.00

Bulk mailing of outreach materials for MLCW information – 1377 x \$.40 = \$550.80

Meeting and Office Supplies including binders, file folders, printer paper, toner, staples, etc. \$179.52 x 1 = \$179.52

Postage for MLWC program announcements and reports – \$0.55 x 540 = \$297.00

E. Indirect Costs

Total: \$9,090.91

TOTAL: 100,000.00

Other Application Materials

Environmental and Cultural Resources Compliance

- Will the proposed project impact the surrounding environment (e.g., soil [dust], air, water [quality and quantity], animal habitat)? Please briefly describe all earth-disturbing work and any work that will affect the air, water, or animal habitat in the project area. Please also explain the impacts of such work on the surrounding environment and any steps that could be taken to minimize the impacts.
 - The project will not impact the surrounding environment. The project activities are focused on watershed group development and watershed restoration planning.
- Are you aware of any species listed or proposed to be listed as a Federal threatened or endangered species, or designated critical habitat in the project area? If so, would they be affected by any activities associated with the proposed project?
 - There are a threatened or endangered species, as well as critical habitat in the project area. The project activities (watershed group development and watershed restoration planning) are not expected to affect any of the threatened or endangered species or critical habitat within the project area.

- Are there wetlands or other surface waters inside the project boundaries that potentially fall under CWA jurisdiction as “Waters of the United States”? If so, please describe and estimate any impacts the proposed project may have.
 - There are wetlands and other surface waters that likely fall under the CWA jurisdiction as “Waters of the United States”. These will be identified during the watershed restoration planning process and will not be impacted during the planning phase of the project.

- When was the water delivery system constructed?
 - The CBP was first constructed in the 1940s and 1950s. The irrigation delivery system carried its first water from Grand Coulee Dam in the spring of 1952 to approximately 66,000 acres. The Moses Lake Irrigation & Rehabilitation District first began constructing their irrigation system in the 1920s, with work on their impounding structure completed in the spring of 1930.

- Will the proposed project result in any modification of or effects to, individual features of an irrigation system (e.g., headgates, canals, or flumes)? If so, state when those features were constructed and describe the nature and timing of any extensive alterations or modifications to those features completed previously.
 - The proposed project (watershed group development and watershed restoration planning) will not result in modification or effects to features of an irrigation system. The planning process will identify any potential modifications or effects that may be made through future project implementation.

- Are any buildings, structures, or features in the irrigation district listed or eligible for listing on the National Register of Historic Places? A cultural resources specialist at your local Reclamation office or the State Historic Preservation Office can assist in answering this question.
 - This is not known at this time and will be assessed during the watershed planning process in coordination with a cultural resources specialist and Reclamation and irrigation district staff.

- Are there any known archeological sites in the proposed project area?
 - There are likely known and unknown archaeological sites within the proposed project area, though the proposed project is not expected to have any impact on such sites. We will cross-reference the Washington Department of Archeology and Historic Preservation (DAHP) [WISAARD](#), the state’s digital repository for architectural and archeological resources and reports, when the location of restoration practices and projects are identified.

- Will the proposed project have a disproportionately high and adverse effect on low income or minority populations?
 - The proposed project will not have a disproportionately high and adverse effect on low income or minority populations.

- Will the proposed project limit access to, and ceremonial use of, Indian sacred sites or result in other impacts on tribal lands?
 - The proposed project will not limit access to any sites or land, Tribal or otherwise.

- Will the proposed project contribute to the introduction, continued existence, or spread of noxious weeds or non-native invasive species known to occur in the area?
 - The proposed project is not expected to contribute to the introduction, continued existence, or spread of noxious weeds or non-native invasive species within the project area.

Required Permits or Approvals

The project at this phase, including watershed group development and watershed restoration planning, do not require permits or approvals. Future potential required permits and approvals will be identified during the watershed restoration planning process.

Letters of Support

Please see Appendix F for letters of support from current MLWC members and other interested stakeholders.

Official Resolution

Please see Appendix H for the official resolution adopted by the GCCD Board of Directors, as requested.

Mandatory Federal Forms

Please see Appendix I for the following forms:

- SF-424 - Application for Financial Assistance
- SF-424B - Assurances Non-Construction Programs
- SF-424A - Budget Information Non- Construction Programs
- SF-LL - Disclosure of Lobbying Activities

References Cited

Carroll, 2006, Moses Lake Phosphorus-Response Model and Recommendation to Reduce Phosphorus Loading: Washington Department of Ecology, Olympia WA, Publication No. 06-03-011.

Drost, B.W., S.E. Cox and K.M. Schurr, 1997. Changes in Ground-Water Levels and Ground-Water Budgets from Predevelopment to 1986, in parts of the Pasco Basin, Washington. USGS WRIR 96-4086.

Franz, L.M., Kahle, S.C., Tecca, A.E., and Olsen, T.D., 2018, Simulation of groundwater storage changes in the Quincy Basin, Washington: U.S. Geological Survey, Scientific Investigations Report 2018-5162, 63pp.

Mundorff, M.J, Reis, D.J., and Strand, J.R., 1952, Progress report on Ground water in the Columbia Basin Project, Washington, U.S. Geological Survey, Open-File Report December, 277p.

Appendices

Appendix A - Watershed Project Area

Appendix B - MLWC Strategic Thinking Session Document

Appendix C - Project Tasks, Timeline & Costs

Appendix D - MLWC Organizational Chart

Appendix E - Moses Lake Watershed Planning Protocol

Appendix F - Letters of Support

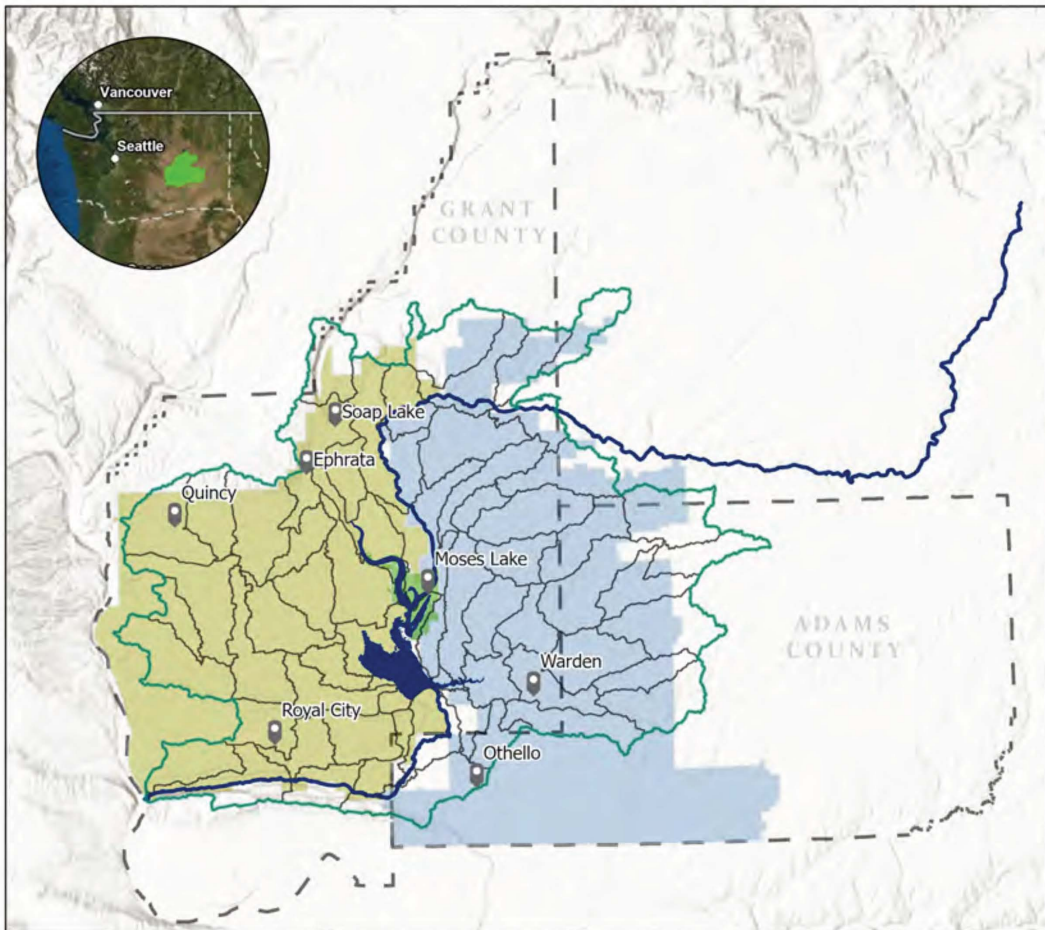
Appendix G - Project Budget

Appendix H - Official Resolution

Appendix I - Mandatory Federal Forms

Appendix A - Watershed Project Area

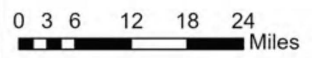
MOSES LAKE WATERSHED



JANUARY 18, 2021

PROJECT AREA LEGEND

- Moses Lake Watershed
- Grant - Adams County
- HUC 12
- Water Bodies and Watercourse
- Moses Lake Irrigation & Rehabilitation District
- East Columbia Basin Irrigation District
- Quincy-Columbia Basin Irrigation District
- Cities



HUC 12	NAME
170200100504	Sand Hollow
170200150605	Upper Frenchman Hills Wasteway
170200150606	Middle Frenchman Hills Wasteway
170200150607	Lower Frenchman Hills Wasteway
170200150703	Lower Bauer Coulee
170200150704	Upper Farrier Coulee
170200150705	Lower Farrier Coulee
170200150706	Upper Weber Coulee
170200150302	Lower Rocky Ford Creek
170200150502	The Pot Hole
170200150503	Canal W 20
170200150504	Quincy Lateral Canal
170200150505	Pothole Substation
170200150506	Upper Winchester Wasteway
170200150507	Lower Winchester Wasteway
170200150707	Lower Weber Coulee
170200130703	Bennett Dam-Wilson Creek
170200150601	Crater Coulee
170200150602	Town of Winchester
170200150603	Martha Lake
170200150604	Low Gap Pass
170200130803	Gibson Draw
170200130805	Town of Marlin-Crab Creek
170200130806	Brook Lake-Crab Creek
170200140203	Hybel Canyon-Lower Grand Coulee

170200140204	Soap Lake-Lower Grand Coulee
170200150301	Upper Rocky Ford Creek
170200150401	Dry Coulee
170200150402	Black Butte-Crab Creek
170200150403	Willow Lake-Crab Creek
170200150404	Round Lake
170200150405	
170200150406	Gloyd Seeps-Crab Creek
170200140305	Billy Clapp Lake
170200150101	Black Rock Coulee
170200150102	Sand Coulee
170200150103	Black Lake
170200150202	Middle Rocky Coulee
170200150203	Lower Rocky Coulee
170200150204	Rocky Branch Coulee
170200151008	Upper Red Rock Coulee
170200151009	Lower Red Rock Coulee
170200151010	Smyrna Bench-Lower Crab Creek
170200151011	Nunnally Lake
170200151012	Town of Jericho-Lower Crab Creek
170200150902	
170200150903	Town of McDonald
170200150904	Potholes Reservoir
170200151001	Kansas Prairie
170200151002	Campbell Lake
170200151003	Herman Lake
170200151004	Hutchinson Lake-Lower Crab Creek

170200151005	Thread Lake
170200151006	Royal Lake-Lower Crab Creek
170200151007	Crab Creek Lateral
170200150808	
170200150809	Town of Roxboro-Lind Coulee
170200150810	Warden Hutterian Brethren
170200150811	Town of Warden-Lind Coulee
170200150812	Town of Sieler
170200150813	Lind Coulee-Pot Hole Reservoir
170200150901	Hiawatha Valley

Appendix B - MLWC Strategic Thinking Session Document

Moses Lake Watershed Council Strategic Thinking Session

June 17, 2019 – 1:00 pm to 5:00 pm
Washington State Potato Commission
108 S Interlake Rd, Moses Lake, WA

Session Purpose:

- Strategic thinking – mission statement, develop short- and long-term actions/goals/accomplishments, develop structural framework, funding & grant opportunities/applications.

Opening Comments, Session Purpose & Agenda

- Harold began the meeting noting the need for completing a total watershed characterization and plan, plot a course that will lead to a long-term organizational structure and program.
- Self-introductions: Jeff, Chris, John, Amanda, RJ, Chad, Bill, Marie, Harold, Ray (facilitator)

Greatest Accomplishments by 2022 (chronological)

- By Sept 2019 organizational structure is established
- By Oct 2019 have a communications plan developed for reaching citizens, elected officials, and others
- By Dec 2019 secure funding to support priority projects
- By Dec 2019 will determine the need for studies to fill data gaps
- By Dec 2019 have financing in place for organizing the council
- By Jan 2020 milestones, timelines developed
- By Mar 2020 build a state-of-art monitoring plan that accomplishes each agencies mission – and provides timely and accurate information to the public.
- By June 2020 will have completed research on all available historic watershed data as determined necessary for inclusion in watershed plan development.
- By June 2020 establish clear water quality thresholds to achieve and sustain over time.
- By June 2020 council will be highly effective team with a high level of trust by constituents and governmental organizations and agencies.
- By June 2020 have a clear program of lake clean up that the general public understands and can be easily promoted
- By June 2020 clear path and measurable outcomes with the people and means to complete
- By June 2020 have citizen buy in on the objectives
- By Dec 2020 will have funding and partnerships in place to conduct studies as needed.
- By Dec 2020 the council will have developed a plan with short and long-term action items that moves toward a cleaner lake
- By June 2021 determine the cost of sustaining water quality improvements into the future.

- By June 2022 predictable water quality improvement made in algae issues, Best Management Practices (BMP's), dilution, and Alum issues are addressed
- By June 2022 significant projects completed leading to significant improvement in the quality of the lake
- By June 2022 will have met 50 micrograms phosphorus per liter, or less, water quality standard
- Ongoing, part of the plan... group will have a way to identify and adapt to changes that may derail us...a way for us to deal with changes, issues...adaptive management

Goals Grid

Achieve	Avoid
<ul style="list-style-type: none"> • Leadership by local people • Individuality as a group and be able to stand up • Have all the players on council that we need to be successful • Timely communication with public – one source of information • Public understanding and ownership • Clean lake • WS council functioning, recognized and accepted by the public • Sustainable water quality gains • Unity of the council - understanding and using experiences utilized • Sustainable funding • Public trust • WS Council legacy • Moses Lake City Council and County Commissioner support & stakeholders 	<ul style="list-style-type: none"> • Stagnation and loss of momentum • Silos in our work • Pitfalls from previous TMDL process • Missteps • Making the water quality worse • Having to post warning signs on lake • Public hysteria • Bad decisions because of public and political pressures • High cost and poor efficiencies • Injury or illness from exposure to toxic algae

Use Goals Grid

- As a checklist
- As developing action items – measured against the goals grid
- Communication tool

Mission Statement (6.17.19)

"The Mission of the Moses Lake Watershed Council is to facilitate community led efforts to improve, protect, and preserve water quality in the watershed for present and future generations"

Strategic Priority Areas

Organization

Water Quality Data, Monitoring & Sustainable Results

Public Outreach, Understanding & Participation

Strategic Planning & Projects

Goals by Strategic Priority Area

Water Quality Data, Monitoring & Sustainable Results

- By Dec 2019 will have identified whether there is a need for studies to fill data gaps
- By Dec 2019 and ongoing exploration of applicable technologies for water quality improvements
- By Mar 2020 build a state-of-art plan for a monitoring program that encompasses each agencies need
- By June 2020 will have completed the study and assembling of all watershed data to formulate the draft plan for moving into the future
- By June 2020 establish clear water quality thresholds to achieve and sustain over time with annual sizable, measurable movements to the solution of issues
- By Dec 2020 will have funding and partnerships in place to conduct the studies needed (if needed)
- By June 2021 finalize plans and determine the estimated cost for sustaining the water quality improvements made
- improvement made in algae issues, BMPs, dilution, and Alum issues are addressed
- By June 2022 will have met 50 micrograms phosphorus per liter or less water quality standard

Public Outreach, Understanding & Participation

- Annually present information and outreach to elected officials
- By Oct 2019 have a communications plan developed for reaching citizens, elected officials, and others
- By Dec 2019, and periodically after host public meetings or events
- By June 2020 have a clear program of lake clean up that the general public understands and can be easily promoted
- By June 2020 have citizen buy-in on the objectives

Strategic Planning & Projects

- By Dec 2019 have funding for the work we are doing
- By Jan 2020 milestones, timeline developed
- By April 2020 clear path and measurable outcomes with the people and means to complete
- By June 2020 have a clear program of lake clean up that the general public understands and can be easily promoted
- By Dec 2020 the council will have developed a plan with short and long term action items & prioritized project list that moves toward a cleaner lake
- By June 2022 significant projects completed leading to significant improvement in the quality of the lake

- Ongoing, part of the plan... group will have a way to identify and adapt to changes that may derail us...a way for us to deal with changes, issues...adaptive management

Organization

- By Sept 2019 organizational structure is established
- By Dec 2019 have financing in place for organizing the council
- By June 2020 council will be highly effective team with a high level of trust

Measurable Goals

Strategic Area	Measures of Success	Goals
Organization	<ul style="list-style-type: none"> • Foundational documents (bylaws, agreements, other) • Funding level • Energy of group & support from key members • Progress toward milestones • Agreements 	See above
Water Quality Data, Monitoring & Sustainable Results	<ul style="list-style-type: none"> • Sustainable readings below 50 micrograms for phosphorus • Plan developed and monitoring toxins • Synthesize and understand the water quality data • Pollutants reduced • Avoiding the TMDL 	See above
Public Outreach, Understanding & Participation	<ul style="list-style-type: none"> • # of public - participation at events and meetings • Public assistance in testing for toxins • Less public complaints and outrage • Level of support and understanding of issues from citizens and organizations 	See above
Strategic Planning & Projects	<ul style="list-style-type: none"> • Deliverables – plans and projects • Funding support • Updated watershed plan • Actions implemented & related outcomes 	See above

Organizational Structure & Funding

- Name | [Moses Lake Watershed Council](#)
- Organizational structure - NGO or government | [stand-alone organization – non government with government participation](#) | [lead role for organizations and agencies depending on the task](#)
- Membership | [designate charter organizations present and formed MLWC 1st group – recruit BOR, elected officials\(s\), stakeholders, WDFW, Citizen at Large, business representation](#) | [petition for membership to organizations \(one representative\)](#)
- Decision Making | [by consensus "can you live with it...?"](#) | [each member would not violate their organizational decision making](#)

- Agreement(s) | [MOU among the Council organizations for agreed to items and membership as first choice](#)
- Bylaws or Operating Procedures | [Operating procedures first](#)
- Officer(s) | [Grant County CD Chair for present](#)
- Funding Flow | [depends on type of funding and task - government or private | administrative coverage | conduit through Grant County CD | case by case](#)
- Meetings | [Grant County CD coordinating for present | monthly](#)
- Communication | [preferred emails and meetings](#)
- Positions and/or Policy |
- Operations | [work done by different members of the council based on who is best to do the work based on consensus of Council | Grant County CD willing to do operations / coordination](#)
- Subcommittees | [could be formed for reference, input, work products | could be led by members](#)

Budget development and grant applications updates and discussion

- Work on this at a different work session

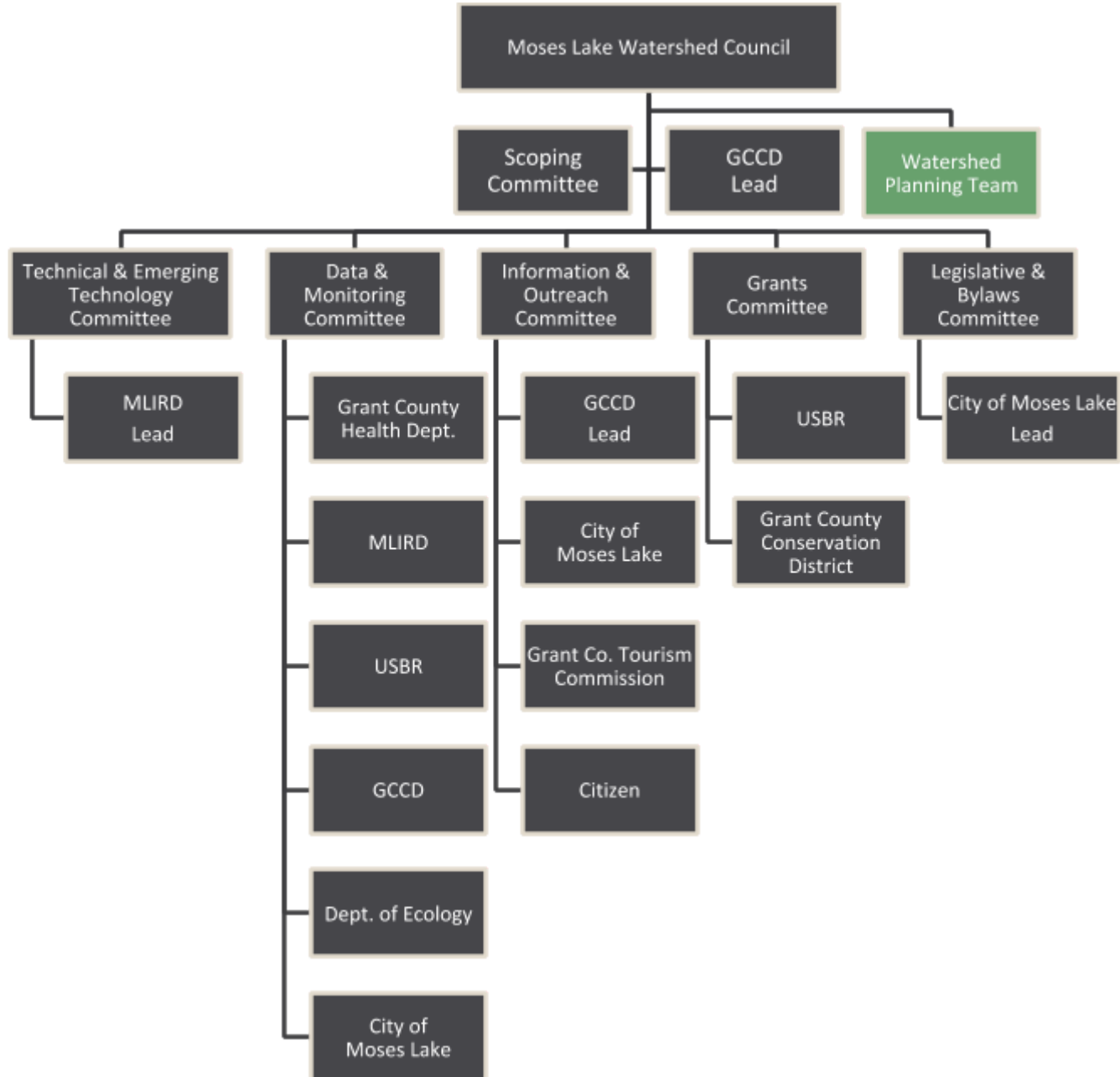
Action Register

Action	Timeline	Lead
Notes from today	By 6.21.19	Ray to Marie
Example agreements and structure based on conversation considered at July meeting	By 7.15.19	Marie
Identify plan outlines for use by the group	By 7.15.19	Marie & Chad
Report on outreach for citizen sampling	By 7.15.19	John
Updates on two Ecology grants	By 7.15.19	Chad & Amanda
Outreach communication for the public describing what we have done	By 7.15.19	Marie
Set date for next public meeting	By 7.15.19	All
Communication outline		Amanda
Meeting 7.15.19 – 10:00 am – Noon – WA Potatoes	7.15.19	All

Appendix C - Project Tasks, Timeline & Costs

Appendix D - MLWC Organizational Chart

Moses Lake Watershed Council Organizational Chart



Description of different committees and contact:

Moses Lake Watershed Council (MLWC):	Lead agency, meets third Tuesday of the month 10:00 am. Chair – Harold Crose, GCCD. Committees give reports to MLWC monthly or as needed. MLWC makes all decisions from recommendations from the Scoping Committees.
	Chair: Harold Crose, Grant County Conservation District (GCCD) – 509-765-9618 or email Harold-Crose@conservewa.net
Scoping Committee Lead:	Scoping Committee is the contact point for all Committees. If a committee needs input or information from other committees the Scoping Committee can make the necessary contacts to get the groups to work together or the Committee may contact them direct. All work and progress reports will be sent to the Scoping Committee from each Committee lead.
	Lead: GCCD – 509-765-9618 or email Marie-Lotz@conservewa.net
Technical & Emerging Technology Committee:	Identify and facilitate water quality improvements, including potential Alum treatments and dilution feasibility. Create criteria for emerging technologies and review present any new technology that meet criteria. Give monthly updates, if any, to MLWC.
	Lead: Moses Lake Irrigation & Rehabilitation District (MLIRD)
Data & Monitoring Committee:	Collect and consolidate data from all agencies involved in monitoring. Give monthly updates, if any, to MLWC.
	Lead: Potential leads – DOH or USBR
Information & Outreach Committee:	Public outreach with newsletter, social media, press releases, and other agencies media outreach. Coordinate public meetings and update public on projects. Work on signage. Give monthly updates, if any, to MLWC.
	Lead: GCCD – Harold Crose
Grants Committee:	Prioritize the MLWC potential projects and work with MLWC or Committees on scope of work and budget for each project. Seek funding for projects and work with MLWC or Committees to apply for the potential grant opportunities.
	Lead: Potential leads – GCCD or USBR
Legislative & Bylaws Committee:	Inform local legislative leaders of the MLWC activities and coordinate future funding requests by the MLWC. Work to keep the City and County informed on MLWC data and plans. Work on bylaws for the MLWC. Review and track the Strategic Plan for the MLWC.
	Lead: City of Moses Lake

Appendix E - Moses Lake Watershed Planning Protocol

MOSES LAKE WATERSHED PLAN

A Step By Step Planning Guide

Plan for Better Water Quality



Moses Lake

Water quality improvements don't just happen. They take hard work, cooperation, and most of all, planning. Developing and implementing a good plan is critical to improving the watershed and Moses lake.

The goal of this Watershed Project is to assist the Moses Lake water-shed Council develop and implement projects that will improve water quality in Moses Lake.

This project development plan is designed to assist the Moses Lake Watershed Council build a step-by-step project guidance document where each step builds upon the previous one, strengthening the project and improving water quality. Using this planning protocol will help focus the project. A focused approach results in the most water quality improvement for the effort. It will also strengthen the application for grants from funding agencies.

This plan will address, in detail, the nine steps of the watershed project planning protocol:

1. Identify the water quality concern
2. Determine reasonable objectives
3. Inventory watershed
4. Analyze watershed data
5. Formulate alternatives
6. Evaluate alternatives
7. Make decisions and complete the plan
8. Implement the plan
9. Evaluate the plan

PLANNING PHASES

Phase I

Identify Water Quality Concerns and Objectives

With the assistance of a Watershed Coordinator, provided to the Watershed Council by the Grant County Conservation District, begins the process of developing the watershed project by identifying lake concerns, opportunities and interest. Second, the MLWC determines reasonable, yet meaningful, water quality objectives for the lake.

Successful completion of this phase has resulted in a grant from DOE to begin work on the Watershed Plan Development which will include:

- Map of Lake and watershed.
- Listing of the physical characteristics of the watershed/Lake and its location.
- Report on potential landowner/stakeholder interest in a watershed project.
- Local commitment to carry out a watershed project.

Landowners and the public will be made aware of this phase through public presentations, social media etc

Phase II

Develop a Watershed Plan

Developing a plan for success includes measurable goals and a roadmap for achieving those goals. Technical partners will provide planning assistance to local sponsors in the form of funding and a trained watershed planner to:

- Inventory the watershed
- Evaluate the watershed data
- Formulate various alternatives
- Evaluate the best alternatives
- Make decisions and write a watershed plan

All of these steps are conducted with leadership of the Moses Lake Conservation District and the Moses Lake Watershed Council (MLWC). The local MLWC will review the work of the watershed planner, provide local input and guidance, and make final decisions. Keeping local landowners and other stakeholders informed and involved in the process is critical to project success.

Finally, the watershed planner can assist with the development of a project application that can be submitted to the funding agencies to implement the watershed plan.

Phase III

Implement the Plan and Evaluate

Once the project has identified technical and/or financial resources, implement the approved watershed plan. The project may need to hire staff and make other decisions. Local sponsors must evaluate progress of the project and evaluate if the project is targeting its priorities. Sponsors also must be prepared to consult with the funding partners about any necessary adjustments that may be needed.

The project will need to prepare and submit regular reports to the funding agencies. Continue to update local landowners and stakeholders on project progress.

Acronyms used in this guide

MLWC: Moses Lake Watershed Council
DOE: Department of Ecology
NRCS: Natural Resources Conservation Service, U.S. Department of Agriculture
GCCD: Grant County Conservation District
GCHD: Grant County Health District
MLIRD: Moses Lake Irrigation and Reclamation District
FWS: Fish and Wildlife Service

Identify Concerns and Determine Objectives

Phase I: Step 1

Identify Water Quality Concerns, Opportunities and Interest

The MLWC initiates the process. The Watershed Planner will identify where to find data to answer these questions:

Things to Consider	Responsible Party*
Is Moses Lake a local priority, is there special significance to the local stakeholders, and are they motivated individually and collectively to improve Moses Lake water quality?	GCCD, County Conservation Board, local MLWC
What is the pollutant? (see DOE Integrated Report, i.e. 303(d) report) <ul style="list-style-type: none"> Is the problem sediment or turbidity? If bacteria, identify possible sources. If excess nutrients, identify sources such as agriculture, municipal, natural, septic, and publicly owned treatment works (POTW). If Phosphorus – nitrates identify drainage, land use, etc. If livestock – CAFO's identify the sources 	GCCD, local MLWC
What, specifically is being impacted by the pollutant? (see DOE 305(b) report)	GCCD, local MLWC
Is the Lake on Washington's priority lakes list? (see DOE Nonpoint Source Plan)	GCCD, local MLWC
Is the Lake a major recreation area?	GCCD, local MLWC
What is the designated use for the Lake? Bureau	GCCD, local MLWC
Are there significant future plans for the watershed/lake?	GCCD, local MLWC
What monitoring data is available?	GCCD, local MLWC
	GCCD, DOE, County Conservation Board, local MLWC
	GCCD, MLIRD-GCHD local MLWC DOE

Phase I: Step 2

Determine Reasonable, Yet Meaningful, Water Quality Objectives

The MLWC determines its objectives for the watershed and Moses Lake, considering the designated uses defined in Washington's water quality standards. The MLWC will need technical assistance with this step. Objectives will be quantifiable in order to measure progress. Objectives will include the following:

Things to Consider	Responsible Party*
Maintain/improve the integrity of the Lake by preventing future degradation	GCCD or local MLWC
Reduce pollutant load to an acceptable level or to the allocation assigned in a TMDL	GCCD or local MLWC
Measurably improve lake conditions	GCCD, local MLWC, DOE Fisheries
Measurably improve in-lake habitat conditions	GCCD, local MLWC, DOE Fisheries
Meet/maintain the designated use for the lake	GCCD, local MLWC, DOE Fisheries
Measurably improve recreational opportunities and economic benefits	GCCD, local MLWC, County Conservation Board, DOE Fisheries, DOE Parks

* Technical partners DOE, BR, FWS, may also be able to provide information or assistance with each of these items.

Inventory Watershed

Phase II: Step 3

Inventory Watershed

At this phase of the project, the technical partners* have approved the watershed planning process and watershed planner is in plan to provide assistance for the watershed inventory. The watershed planner will help the MLWC determine which of the following activities are necessary:

Physical	Responsible Party*
Identify land use, soils, slopes, and other RUSLE/RUSLE2 factors; size of the watershed will determine the detail required (GIS staff) Smaller sub watersheds (generally less than 25,000 acres) should receive a field-by-field assessment	Watershed Planner, GCCD, local MLWC
Larger watersheds (generally greater than 25,000 acres) should have an assessment designed by technical partners that meets the specific traits of the watershed GCCD will enter applicable resource data into GIS format	Watershed Planner, GCCD, local MLWC DOE
Run the Sediment Delivery Model and/or SWAT model to determine priority areas and loading estimates	DOE, NRCS
Examine streams using "Rapid Assessment of Stream Conditions Along Length" (RASCAL) or other models to determine priority areas	Watershed Planner, GCCD, MLWC
Evaluate topography using digital elevation model (DEM) or Light Detection and Ranging (LiDAR) data	Watershed Planner, GCCD, local MLWC
Determine gully and streambank/bed erosion potential (Erosion and Sediment Delivery Procedure) to determine priority areas and loading estimates; size of the watershed will determine the detail required; assessment designed by the technical partners to meet the specific traits of the watershed	Watershed Planner, GCCD, local MLWC
Identify livestock operations (pasture and feedlot) and waste application methods to determine priority areas and loading estimates; assessment designed by the technical partners to meet the specific traits of the watershed	Watershed Planner, GCCD, local MLWC
Identify organized drainage district "watersheds"	Watershed Planner, GCCD, local MLWC
Identify other potential point and nonpoint issues, specific to individual watersheds (superfund sites, leaking underground storage tanks, etc.)	Watershed Planner, GCCD, local work group, DOE Contaminated Sites
Assess urban contributions (percent impervious cover, unsewered communities, construction sites, etc.)	Watershed Planner, GCCD, local MLWC, city
urban storm drain discharge points, associated intakes and watersheds for each.	Watershed Planner, GCCD, local MLWC, city
In the urban watershed, identify potential pollutant sources that may be reaching the storm drain system	Watershed Planner, GCCD, local work group, DOE Field Office, city
Identify all NPDES permits and compliance record of all point sources that may have an influence on the Lake/watershed.	Watershed Planner, GCCD, local work group, DOE Field Office
Identify any influence wildlife in the watershed may have on water quality.	Watershed Planner, DOE wildlife



Social	Responsible Party*
Survey landowners to determine what conservation practices and financial incentives they desire and secure their participation in the decision-making process	GCCD, local MLWC
Survey the public to determine the level and extent of stakeholder interest and knowledge about watershed/Lake issues and secure their participation in the decision-making process	GCCD, local MLWC
Conduct a kickoff meeting to introduce the potential of a water quality project to landowners and the public	GCCD, local MLWC
Determine any local or statewide political assets or liabilities with a potential project	GCCD, local MLWC
Share survey results with the public to build a sense of community and purpose	GCCD, local MLWC

Financial	Responsible Party*
Determine the level of potential financial commitment from local sources (landowners, residents, local interest groups, utilities, non-governmental organizations (NGOs), counties, cities, etc.)	GCCD, local MLWC
Identify funding agency support for a full watershed project	GCCD, local MLWC
Explore other sources of financial support for a watershed project (NGOs, foundations, in-kind contributions, etc.)	GCCD, local MLWC
Identify interests and priorities that other agencies and organizations may have in the watershed and what resources they may have to offer	Watershed Planner, GCCD, local MLWC, DOE Fisheries, DOE Forestry, DOE Wildlife

* DOE, FWS and NRCS able to provide information or assistance with each of these items



Analyze Watershed Data

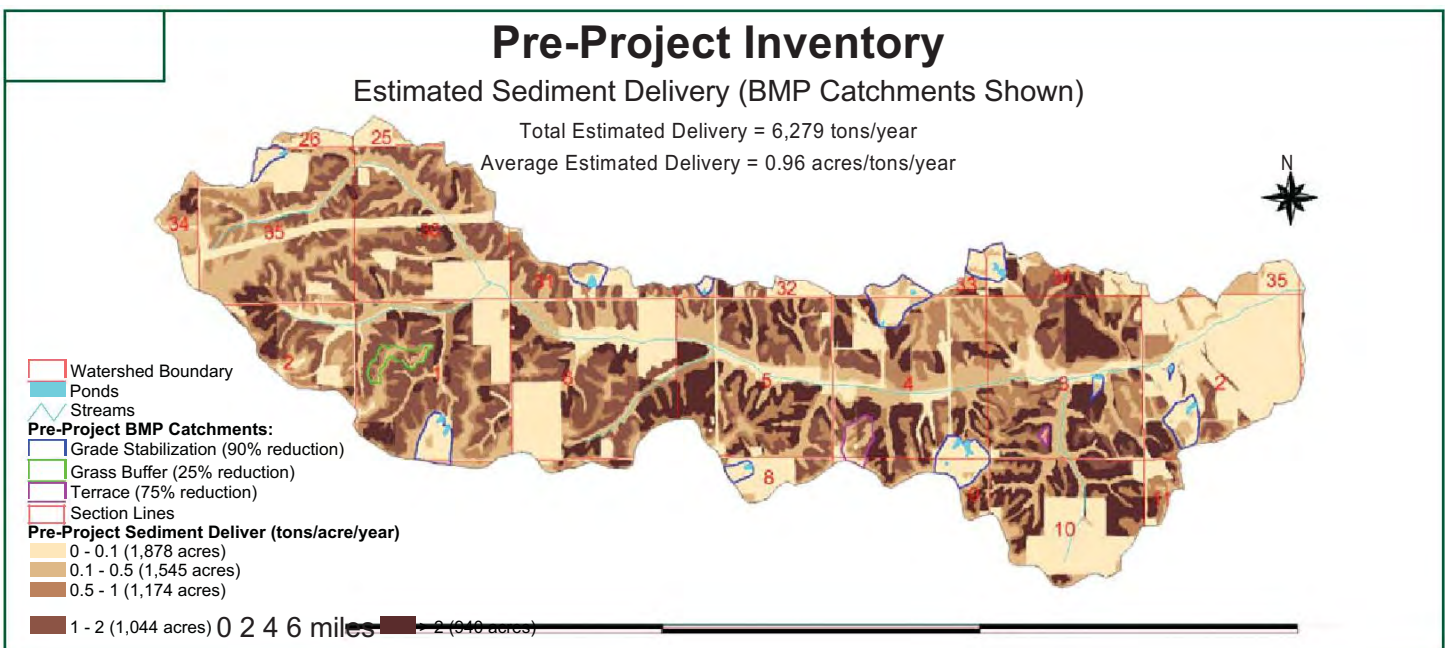
Phase II: Step 4

Analyze Watershed Data

The watershed planner will assist with collecting technical, personnel and financial resources necessary to accomplish the data analysis.

Things to Consider	Responsible Party*
Verify loading estimates previously produced to assure accuracy	Watershed Planner, GCCD, local MLWC
Analyze gathered data to determine if it supports the initial concerns and objectives	Watershed Planner, GCCD, local MLWC
Verify priority parcels/landowners for participation	Watershed Planner, GCCD, local MLWC
Examine survey results for stakeholder and priority landowner understanding and willingness to participate	Watershed Planner, GCCD, local MLWC
Evaluate recent and future trends that may affect the project's success (CRP contract expiration or acreage limitations, CSP opportunities, new programs, etc.)	Watershed Planner, GCCD, local MLWC
Determine geographic and issue priorities for a project, given the watershed/Lake data collected	Watershed Planner, GCCD, local MLWC
Evaluate the influence NPDES permits may have on the Lake	Watershed Planner, GCCD, local work group, DOE water quality bureau
Re-evaluate objectives in light of the analyzed data to determine if they are feasible	Watershed Planner, GCCD, local MLWC

* DOE, DSC and NRCS may also be able to provide information or assistance with each of these items



Formulate Alternatives

Phase II: Step 5

Formulate Alternatives

Alternatives are resource management options developed to solve the identified water resource problems. Seldom will one approach be sufficient. Rather a combination of approaches, each with its advantages and disadvantages, must be considered.

Things to Consider	Responsible Party*
Ensure proposed alternatives address identified objectives and concerns	Watershed Planner, GCCD, local MLWC
Develop alternatives that are financially and technically feasible	Watershed Planner, GCCD, local MLWC
Include alternatives that are "program neutral" so funding program rules do not constrain the search for innovative solutions	Watershed Planner, GCCD, local MLWC
Consider and include regulatory alternatives where appropriate, as well as voluntary activities	Watershed Planner, GCCD, local MLWC
Include in-stream or in-lake work as well as conservation practices located in the watershed	Watershed Planner, GCCD, local MLWC
Each alternative will be summarized including costs, pollutant reduction effectiveness and potential locations	Watershed Planner, GCCD, local MLWC

*MLWC - GCCD will provide information or assistance with each of these items



Evaluate Alternatives

Phase II: Step 6

Evaluate Alternatives

Alternatives are evaluated to determine how effective they are in meeting objectives, the cost, how feasible they are to accomplish, and whether they are acceptable to landowners and the public.

Things to Consider	Responsible Party*
Evaluate feasibility based upon social, financial, technical and political considerations	Local MLWC, GCCD, Watershed Planner
Evaluate the impacts of alternatives upon such things as wildlife habitat, threatened and endangered species, cultural resource sites, etc.	Local MLWC, GCCD, Watershed Planner
Evaluate the impact of alternatives upon other pollutant sources and groundwater (e.g., tile inlet terraces reduce sediment, but may worsen atrazine problems)	Local MLWC, GCCD, Watershed Planner
Inventory and analysis work (steps 3 and 4) needs to support the evaluation of alternatives	Local MLWC, GCCD, Watershed Planner
Conduct a stakeholder meeting to gather input on problems, objectives and alternatives within the watershed	Local MLWC, GCCD, Watershed Planner
Evaluate alternatives by asking if a given component is essential to the success of the project, or just nice to have	Local MLWC, GCCD, Watershed Planner
Consider the popularity/acceptability of various BMPs within the watershed	Local MLWC, GCCD
Rank the effectiveness of various alternatives to determine which alternatives have the most merit	Local MLWC, GCCD, Watershed Planner

*MLWC - GCD provide information or assistance with each of these items



Complete Planning Process

Phase II: Step 7

Make Decisions and Complete the Planning Process

The MLWC, in consultation with stakeholders and the watershed planner, will lead decision making. The decisions made at this level will become an application for funding. The plan will identify priorities and target cost-effective alternatives for measurable results. Development of the work plan will comprise the full application for a fundable project.

Things to Consider	Responsible Party*
Review all of the alternatives and evaluate their value to the project	Watershed Planner, GCCD, local MLWC
Choose alternatives that are cost-effective	Watershed Planner, GCCD, local MLWC
In many cases, the final plan may include a blend of alternatives	Watershed Planner, GCCD, local MLWC
Decisions should be documented in an area-wide or watershed project plan. This plan should support funding applications for one or more programs, but probably will have to be modified to meet specific funding program application criteria.	Watershed Planner, GCCD, local MLWC
Determine local funding, leadership, in-kind contributions, etc.	Watershed Planner, GCCD, local MLWC
Determine how progress will be analyzed during the project and at the end of the project. Measures may include monitoring, models, practices installed, park user days, etc.	Watershed Planner, GCCD, local MLWC
Incorporate selected alternatives, staffing, technical assistance, funding, etc. into a final work plan	Watershed Planner, GCCD, local MLWC
Solicit/select the combination of program and funding sources needed to maximize local contributions to achieve project objectives	Watershed Planner, GCCD, local MLWC
Meet with landowners and other watershed stakeholders to gain input and support for the final watershed plan	Watershed Planner, GCCD, local MLWC

* MLWC - GCCD



Practice Implementation Fencing

Implement the Plan

Phase III: Step 8

Implement the Watershed Plan

Watershed projects are meant to evoke change: change in management, change in attitude, change in water quality. To create this change, projects must develop a water quality project by implementing the final plan of selected alternatives, prioritizing their implementation and soliciting funding sources to carry out the plan.

Things to Consider	Responsible Party*
Enlist necessary staff and technical assistance (consider skills, time needed, etc.)	GCCD, local MLWC
Design an information and education component to keep all stakeholders up to date on project developments and progress	Project staff, GCCD, local MLWC
Develop and use visual tools to explain water quality problems and the implementation plan to landowners and stakeholders	Project staff, GCCD, local MLWC
Kick off project with meeting of landowners and stakeholders	Project staff, GCCD, local MLWC
Continue to keep stakeholders, funding agencies, landowners, NGOs and others informed	Project staff, GCCD, local MLWC

* DOE, and NRCS may also be able to provide information or assistance with each of these items



Technical Assistance

Evaluate The Plan

Phase III: Step 9

Evaluate the Plan

Measure the progress toward project objectives both during the project as well as at the end of the project and make necessary adjustments in order to achieve success.

Things to Consider	Responsible Party
Periodically determine if the project is on schedule	GCCD, local MLWC
Periodically determine if the project is satisfying the priorities set out in the work plan	GCCD, local MLWC
Determine the adjustments necessary to meet the schedule and priority objectives of the project (participation rate, accurate assumptions, technology changes, etc.)	GCCD, local MLWC, project staff
Report progress to funding partners on a regular basis	Project staff, GCCD, local MLWC
Collect quantifiable evaluation data described in the work plan	Project staff, GCCD, local MLWC
Calculate evaluation measures on a regular basis (practices installed, modeled or monitored load reductions, park user days, etc.)	Project staff, GCCD, local MLWC
Complete evaluation at the end of the project to determine level of success - what aspects of the project worked well and not so well?	Project staff, GCCD, local MLWC
Submit final report to funding organizations and local partners	Project staff, GCCD, local MLWC
Continue to evaluate the long-term impact of the project after its completion	GCCD, local MLWC



Moses Lake Watershed Council

Moses Lake Watershed Council



**Moses Lake Watershed Council Members
Includes concerned citizens.**



— BUREAU OF —
RECLAMATION



City of Moses Lake



DEPARTMENT OF
ECOLOGY
State of Washington



GCHD

GRANT COUNTY HEALTH DISTRICT



MOSES LAKE IRRIGATION AND
REHABILITATION DISTRICT

Contact Information

Grant County Conservation District:

Harold Crose

(509) 765-9618

Harold-crose@conserveva.net

Appendix F - Letters of Support

Washington State Legislature - 9th District Legislators
Washington State Legislature - 13th District Legislators
Washington State Department of Ecology
Washington State Department of Agriculture
Washington State Department of Health
Washington State Conservation Commission
Grant County Commissioners
Grant County Health District
Grant County Conservation District
City of Moses Lake
Moses Lake Irrigation & Rehabilitation District
Moses Lake Chamber of Commerce
Moses Lake-Othello Association of Realtors
Moses Lake LEAD
Confluence Health
Cascade Marina



Washington State Legislature

Avra Morgan, CWMP Coordinator
Robin Graber, Program Analyst
Bureau of Reclamation - Water Resources and Planning Office
P.O. Box 25007
Denver, CO 80225

Letter of Support: Grant County Conservation District - application to participate in the Bureau of Reclamation's Cooperative Watershed Management Program

Dear Ms. Morgan and Ms. Graber,

The Washington State Legislature has been an active partner with the Grant County Conservation District in the effort to fund construction of surface water delivery systems, and supports efforts to pull stakeholders together to maximize the pool of expertise necessary to ensure sufficient water delivery to Washington state's productive agricultural region. We agree with their proposal seeking Phase I funding from the Bureau of Reclamation's cooperative Watershed Management Program and believe it could have a significant impact on our agricultural regions in Washington.

Since August 2020, the Grant County Conservation District has taken a lead role in coordinating work with agriculturalists on the Odessa Ground Water Replacement Program, a significant part of the Columbia Basin Project. They have successfully submitted a request for funding through the Natural Resources Conservation Service (NRCS) for a Regional Conservation Partnership Program grant, and are currently launching efforts for a watershed wide conservation approach. Their plan would provide multi-year funding for an endeavor with the scope of the Columbia Basin Project.

The region impacted by ground water depletion covers a large swath of central Washington. Many stakeholder groups are active participants in the drive to find solutions. During the process of preparing applications for funding opportunities, it is apparent that these groups require coordination and support.

The Moses Lake Watershed Council consists of a diverse group of experts including municipal water purveyors, scientists conducting aquifer monitoring and protection, irrigators, state and federal agencies as well as subject experts from the USDA and the US Bureau of Reclamation. The group is essential to coordinating the larger universe of stakeholders as we develop a comprehensive approach to surface water delivery and ground water recovery and restoration.

With the support of the Bureau of Reclamation, Grant County Conservation District will be capable of strengthening the Moses Lake Water Council and in turn, leveraging the capacity of available expertise

in order to better identify, develop and implement watershed programs that address the region's water resource concerns.

The Legislators of this region support the efforts of the Grant County Conservation District and will continue to be active participants in the Moses Lake Watershed Council.

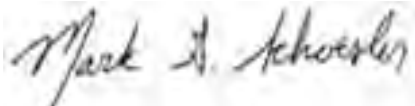
Sincerely,



Rep. Mary Dye
9th Legislative District



Rep. Joe Schmick
9th Legislative District



Sen. Mark Schoesler
9th Legislative District



Washington State Legislature

January 12, 2021

Avra Morgan, CWMP Coordinator
Robin Graber, Program Analyst
Bureau of Reclamation
Water Resources and Planning Office
P.O. Box 25007
Denver, CO 80225

Re: Letter of Support for the Cooperative Watershed Management Program

Dear Ms. Morgan & Ms. Graber,

We are pleased to express WA State Legislators support for the Grant County Conservation District's (GCCD) proposal for the Bureau of Reclamation's Cooperative Watershed Management Program Phase I funding to support the Moses Lake Watershed Council (MLWC). Through GCCD's leadership, the MLWC has grown into an active committee of diverse stakeholders who are committed to finding and implementing local solutions to improve, protect, and preserve water quality in the watershed for present and future generations.

Our organization's mission is to serve our constituents, the ML Watershed is important to our organization since it directly impacts the health and quality of life of the residents in this part of our service area. Supporting the MLWC and engaging in watershed management directly supports our mission and vision. Restoration planning is important to our organization because of the wide impact to many aspects of Grant County including health, economic development, and recreation.

We are confident with Reclamation's financial support that GCCD will be able to strengthen and expand the development and operations of the MLWC and will be able to lead an effective watershed restoration planning process resulting in a Watershed Management and Restoration Plan. Through increased coordination and collaboration, we will be able to better identify, develop and implement watershed programs and projects that leverage resources and address multiple water resource concerns.

We look forward to continuing to be an active member of this important watershed group and are committed to ensuring a successful watershed planning and implementation process. If you have any questions, please don't hesitate to contact us.

Sincerely,



Senator Judy Warnick
13th Legislative District



Rep. Tom Dent
13th Legislative District



Rep. Alex Ybarra
13th Legislative District



**STATE OF WASHINGTON
DEPARTMENT OF ECOLOGY**

4601 N. Monroe Street • Spokane, Washington 99205-1295 • (509) 329-3400

January 12, 2021

Avra Morgan, CWMP Coordinator
Robin Graber, Program Analyst
Water Resources and Planning Office
U.S. Bureau of Reclamation
PO Box 25007
Denver, CO 80225

RE: Support for Cooperative Watershed Management Program

Dear Avra Morgan and Robin Graber:

The Department of Ecology's Eastern Region Water Quality Program staff are pleased to write this letter of support for the Grant County Conservation District's (GCCD) application for funding through the U.S. Bureau of Reclamation's (USBR) Cooperative Watershed Management Program (Phase I) to support the Moses Lake Watershed Council (MLWC). Through GCCD's leadership, the MLWC has grown into an active committee of diverse stakeholders who are committed to finding and implementing local solutions to improve, protect, and preserve water quality in the watershed for present and future generations.

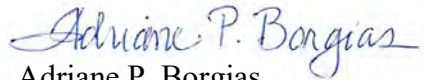
Ecology's Eastern Regional Office is committed to working towards water quality outcomes in the Moses Lake watershed through a community-led, collaborative approach. A watershed management and restoration plan is a critical step to achieving on-the-ground water quality improvements. Ecology provides technical and administrative support to this project and may be able to offer future financial assistance for the implementation of projects identified in the plan.

We are confident that, with USBR's financial support, GCCD will be able to strengthen and expand the development and operations of the MLWC and can lead an effective planning process that results in a watershed management and restoration plan. Through increased coordination and collaboration we will be able to better identify, develop, and implement watershed programs and projects that leverage resources and address multiple water resource concerns.

Avra Morgan
Robin Graber
January 12, 2021
Page 2 of 2

We look forward to continuing to be an active member of this important watershed group and are committed to ensuring a successful watershed planning and implementation process. If you have any questions, please contact Amanda Richardson at amanda.richardson@ecy.wa.gov or (509) 329-3585.

Sincerely,



Adriane P. Borgias
Water Quality Section Manager
Eastern Regional Office

APB:red

cc: Chad Atkins, Ecology
Amanda Richardson, Ecology



STATE OF WASHINGTON
DEPARTMENT OF AGRICULTURE
P.O. Box 42560 • Olympia, Washington 98501 • (360) 902-1800

January 19, 2021

Avra Morgan, CWMP Coordinator
Robin Graber, Program Analyst
Bureau of Reclamation
Water Resources and Planning Office
P.O. Box 25007
Denver, CO 80225

Re: Letter of Support for the Cooperative Watershed Management Program

Dear Ms. Morgan & Ms. Graber:

I'm pleased to express Washington State Department of Agriculture's support for the Grant County Conservation District's (GCCD) proposal for the Bureau of Reclamation's Cooperative Watershed Management Program Phase I funding to support the Moses Lake Watershed Council (MLWC). Through GCCD's leadership, the MLWC has grown into an active committee of diverse stakeholders who are committed to finding and implementing local solutions to improve, protect, and preserve water quality in the watershed for present and future generations.

Through service, regulation, and advocacy, the Washington State Department of Agriculture supports the viability and vitality of agriculture while protecting consumers, public health, and the environment. Grant County and the Moses Lake Watershed contain a significant amount of agricultural production in our state. Participating in the MLWC will expand on existing efforts at our agency working to improve soil health and water quality in this region. A coordinated watershed planning effort will allow the collaborative group to capitalize on shared goals. Supporting the MLWC and engaging in watershed management and restoration planning is important to our organization because it will inform how resources can be most effectively used to protect and enhance the watershed and associated agricultural production.

We are confident with Reclamation's financial support that GCCD will be able to strengthen and expand the development and operations of the MLWC and will be able to lead an effective watershed restoration planning process resulting in a Watershed Management and Restoration Plan. Through increased coordination and collaboration, we will be able to better identify, develop and implement watershed programs and projects that leverage resources and address multiple water resource concerns.

We look forward to continuing to be an active member of this important watershed group and are committed to ensuring a successful watershed planning and implementation process. If you have any questions, please do not hesitate to contact me at DSandison@agr.wa.gov.

Sincerely,

Derek I. Sandison
Director



STATE OF WASHINGTON
DEPARTMENT OF HEALTH

OFFICE OF DRINKING WATER

PO BOX 47822 • Olympia, Washington 98504-7822

Tel: (360) 236-3100 • FAX: (360) 236-2253 • TDD Relay Service: 1-800-833-6388

January 12, 2021

Avra Morgan, CWMP Coordinator
Robin Graber, Program Analyst
Bureau of Reclamation
Water Resources and Planning Office
P.O. Box 25007
Denver, CO 80225

Re: Letter of Support for the Cooperative Watershed Management Program

Dear Ms. Morgan & Ms. Graber,

I'm pleased to express Washington Department of Health's support for the Grant County Conservation District's (GCCD) proposal for the Bureau of Reclamation's Cooperative Watershed Management Program Phase I funding to support the Moses Lake Watershed Council (MLWC). Through GCCD's leadership, the MLWC has grown into an active committee of diverse stakeholders who are committed to finding and implementing local solutions to improve, protect, and preserve water quality in the watershed for present and future generations.

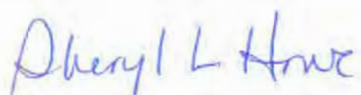
The Department of Health works with others to protect and improve the health of all people in Washington state. The water quality of this region is critical in protecting humans, pets and wildlife from harmful bacteria as well as providing safe and reliable drinking water. Participating in the MLWC is important to Health in our efforts to prevent harmful bacteria from impacting human health and the environment. Additionally, clean water is vital to the economic well-being of the Moses Lake area. Supporting the MLWC is very important to Health because understanding loading rates to the lake allows for better management of nutrients which will reduce the severity and frequency of the bacteria.

We are confident with Reclamation's financial support that GCCD will be able to strengthen and expand the development and operations of the MLWC and will be able to lead an effective watershed restoration planning process resulting in a Watershed Management and Restoration Plan. Through increased coordination and collaboration, we will be able to better identify, develop and implement watershed programs and projects that leverage resources and address multiple water resource concerns.



We look forward to continuing to be an active member of this important watershed group and are committed to ensuring a successful watershed planning and implementation process. If you have any questions, please don't hesitate to contact me at 360-507-6108.

Sincerely,



Sheryl L. Howe, L.G
Hydrogeologist
Washington Dept. of Health
Office of Drinking Water
360-507-6108



STATE OF WASHINGTON
CONSERVATION COMMISSION

PO Box 47721 • Olympia, Washington 98504-7721 • (360) 407-6200 • FAX (360) 407-6215

January 12, 2021

Avra Morgan, CWMP Coordinator
Robin Graber, Program Analyst
U.S. Bureau of Reclamation
Water Resources and Planning Office
P.O. Box 25007
Denver, CO 80225

Re: Letter of Support for Cooperative Watershed Management Program

Dear Ms. Morgan & Ms. Graber,

I'm pleased to express Washington State Conservation Commission's support for the Grant County Conservation District's (GCCD) proposal for the U.S. Bureau of Reclamation's (USBR) Cooperative Watershed Management Program Phase I funding to support the Moses Lake Watershed Council (MLWC). Through GCCD's leadership, the MLWC has grown into an active committee of diverse stakeholders who are committed to finding and implementing local solutions to improve, protect, and preserve water quality in the watershed for present and future generations.

Our organization's mission is "to conserve natural resources on all lands in Washington State, in collaboration with conservation districts and other partners". The Watershed Management Program's goals of improving, protecting, and preserving water quality fits directly in our mission of conserving natural resources, and is work we strongly support.

We are confident with USBR's financial support that GCCD will be able to strengthen and expand the development and operations of the MLWC and will be able to lead an effective watershed restoration planning process resulting in a watershed management and restoration plan. Through increased coordination and collaboration we will be able to better identify, develop and implement watershed programs and projects that leverage resources and address multiple water resource concerns.

If you have any questions, please don't hesitate to contact me via e-mail at, csmith@scc.wa.gov or by phone (360) 584-3184.

Regards,

A handwritten signature in black ink, appearing to read "Carol Smith".

Carol Smith
Executive Director



GRANT COUNTY
OFFICE OF THE
BOARD OF COUNTY COMMISSIONERS
P O Box 37
EPHRATA WA 98823
(509) 754-2011

January 12, 2021

Avra Morgan, CWMP Coordinator
Robin Graber, Program Analyst
Bureau of Reclamation
Water Resources and Planning Office
P.O. Box 25007
Denver, CO 80225

Re: Letter of Support for the Cooperative Watershed Management Program

Dear Ms. Morgan and Ms. Graber,

The Grant County Board of Commissioners write in support for the Grant County Conservation District's (GCCD) proposal for the Bureau of Reclamation's Cooperative Watershed Management Program Phase I funding to support the Moses Lake Watershed Council (MLWC). Through GCCD's leadership, the MLWC has grown into an active committee of diverse stakeholders who are committed to finding and implementing local solutions to improve, protect, and preserve water quality in the watershed for present and future generations.

We are confident with Reclamation's financial support that GCCD will be able to strengthen and expand the development and operations of the MLWC and will be able to lead an effective watershed restoration planning process resulting in a Watershed Management and Restoration Plan. Through increased coordination and collaboration, we will be able to better identify, develop and implement watershed programs and projects that leverage resources and address multiple water resource concerns.

We look forward to continuing to be an active member of this important watershed group and are committed to ensuring a successful watershed planning and implementation process. If you have any questions, please don't hesitate to contact our office at 509-754-2011 ext 2901.


Danny Stone
District 1

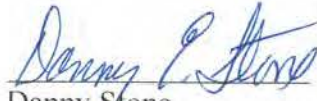
Rob Jones
District 2

Cindy Carter
District 3

Sincerely,

BOARD OF GRANT COUNTY COMMISSIONERS


Cindy Carter, Chair


Danny Stone


Rob Jones

:bjv

Cc: Moses Lake Chamber of Commerce

January 12, 2021

Avra Morgan, CWMP Coordinator
Robin Graber, Program Analyst
Bureau of Reclamation
Water Resources and Planning Office
P.O. Box 25007
Denver, CO 80225

Re: Letter of Support for the Cooperative Watershed Management Program

Dear Ms. Morgan & Ms. Graber,

I am pleased to express Grant County Health District's (GCHD) support for the Grant County Conservation District's (GCCD) proposal for the Bureau of Reclamation's Cooperative Watershed Management Program Phase I funding to support the Moses Lake Watershed Council (MLWC). Through GCCD's leadership, the MLWC has grown into an active committee of diverse stakeholders who are committed to finding and implementing local solutions to improve, protect, and preserve water quality in the watershed for present and future generations.

Grant County Health District's mission is to evaluate the health of Grant County and align opportunities for our communities to thrive and be healthy with a vision to reimagine public health by being a leader and partner that protects and improves our communities. One way we can serve to protect and improve our communities is by participation in the MLWC. Participation allows our staff to have open dialogue about the condition of the lake and watershed with community partners and provide important education to the residents of Grant County through the MLWC.

Moses Lake and the watershed that feeds it is an important resource to the communities we serve. Supporting the MLWC and engaging in watershed management and restoration planning is important to GCHD because it affects both the physical and mental health of the residents we serve through the many recreation opportunities Moses Lake and the bigger watershed provide. A healthy lake and watershed mean healthier residents who can worry less about the water they and



their families come into contact with and the fish they harvest. They can be free to wade, swim, fish, boat, and otherwise enjoy the Moses Lake watershed, including the lake itself.

We are confident with Reclamation's financial support that GCCD will be able to strengthen and expand the development and operations of the MLWC and will be able to lead an effective watershed restoration planning process resulting in a Watershed Management and Restoration Plan. Through increased coordination and collaboration, we will be able to better identify, develop and implement watershed programs and projects that leverage resources and address multiple water resource concerns.

We look forward to continuing to be an active member of this important watershed group and are committed to ensuring a successful watershed planning and implementation process. If you have any questions, please do not hesitate to contact me at 509-766-7960 ext 41 or by email at sshopbell@granthealth.org.

Sincerely,

A handwritten signature in black ink, appearing to read 'Stephanie Shopbell', with a long horizontal flourish extending to the right.

Stephanie Shopbell
Environmental Health Manager





January 12, 2021

Avra Morgan, CWMP Coordinator
Robin Graber, Program Analyst
Bureau of Reclamation
Water Resources and Planning Office
P.O. Box 25007
Denver, CO 80225

Re: Letter of Support for the Cooperative Watershed Management Program

Dear Ms. Morgan & Ms. Graber,

I'm pleased to express Grant County Conservation District's support for the Grant County Conservation District's (GCCD) proposal for the Bureau of Reclamation's Cooperative Watershed Management Program Phase I funding to support the Moses Lake Watershed Council (MLWC). Through GCCD's leadership, the MLWC has grown into an active committee of diverse stakeholders who are committed to finding and implementing local solutions to improve, protect, and preserve water quality in the watershed for present and future generations.

Our organization's mission is as a non-regulatory organization, we are dedicated to providing technical, financial and educational resources to help develop community-based solutions to conservation issues in the heart of the Columbia Basin. Participating in the MLWC is important to our organization for the following reasons: The Columbia Basin is a Sole Source aquifer – meaning every bit of drinking water comes from the ground. Moses Lake and the surrounding watershed are susceptible to blue-green algae blooms. The algal has impacted Moses Lake and the surrounding region by diminished economic and recreational opportunities. Supporting the MLWC and engaging in watershed management and restoration planning is important to our organization because harmful algal blooms can produce extremely dangerous toxins that can sicken or kill people and animal. The blooms also create dead zones in the water, raise treatment costs for drinking water and hurt industries that depend on clean water.

We are confident with Reclamation's financial support that GCCD will be able to strengthen and expand the development and operations of the MLWC and will be able to lead an effective watershed restoration planning process resulting in a Watershed Management and Restoration Plan. Through increased coordination and collaboration, we will be able to better identify, develop and implement watershed programs and projects that leverage resources and address multiple water resource concerns.

1107 S. Juniper Dr., Moses Lake, WA 98837 | www.columbiabasinccds.org

Office: (509) 765-9618 | Fax: (509) 765-4127



We look forward to continuing to be an active member and the lead entity of this important watershed group and are committed to ensuring a successful watershed planning and implementation process. If you have any questions, please don't hesitate to contact me at 509-765-9618.

Sincerely,

A handwritten signature in blue ink that reads "Dave Stadelman".

Dave Stadelman
GCCD Chairman

1107 S. Juniper Dr., Moses Lake, WA 98837 | www.columbiabasinccds.org

Office: (509) 765-9618 | Fax: (509) 765-4127



January 12, 2021

Avra Morgan, CWMP Coordinator
Robin Grabber, Program Analyst
Bureau of Reclamation
Water Resources and Planning Office
P.O. Box 25007
Denver, CO 80225

RE: Letter of Support for the Cooperative Watershed Management Program

Dear Ms. Morgan and Ms. Grabber,

I am pleased to express support from the City Council of Moses Lake, Washington for the Grant County Conservation District's (GCCD) proposal for the Bureau of Reclamation's Cooperative Watershed Management Program Phase I funding to support the Moses Lake Watershed Council (MLWC). Through GCCD's leadership, the MLWC has grown into an active committee of diverse stakeholders who are committed to finding and implementing local solution to improve, protect, and preserve water quality in the watershed for present and future generations.

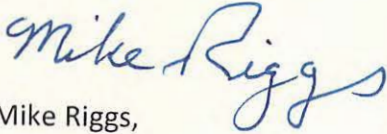
Our organization's mission is to establish a city where people have safe and secure places to live, an economy that provides jobs, an efficient circulation network, effective schools, and recreational opportunities. It is the city government's responsibility to provide public services and facilities, develop policies, and adopt regulations to guide the growth and development of a city that meets the needs of its people. Participation in the MLWC is important to our organization to improve the water quality of Moses Lake and in turn support the activities related to recreation, commerce, and healthful benefits for current citizens and future generations. Supporting the MLWC and engaging in watershed management and restoration planning is important to the Moses Lake City Council in the effort to address our city's mission and goals.

We are confident with Reclamation's financial support that GCCD will be able to strengthen and expand the development and operation of the MLWC and will be able to lead an effective watershed restoration planning process resulting in a Watershed Management and Restoration Plan. Through increased coordination and collaboration, we will be able to better identify, develop and implement watershed programs and projects that leverage resources and address multiple water resource concerns.

We look forward to continuing to be an active member of this important watershed group and are committed to ensuring a successful watershed planning and implementation process. If you

have any questions, please don't hesitate to contact me through the Administrative Office of the Moses Lake Civic Center; (509) 764-3703 or at mriggs@cityofml.com.

Sincerely,

A handwritten signature in blue ink that reads "Mike Riggs". The signature is written in a cursive style with a large, looping "R" and "g".

Mike Riggs,

Councilmember,

Moses Lake City Council



January 8, 2021

Avra Morgan, CWMP Coordinator
Robin Graber, Program Analyst
Bureau of Reclamation
Water Resources and Planning Office
P.O. Box 25007
Denver, CO 80225

Re: Letter of Support for the Cooperative Watershed Management Program

Dear Ms. Morgan & Ms. Graber,

I'm pleased to express the Moses Lake Irrigation & Rehabilitation District's support of the Grant County Conservation District's (GCCD) proposal for the Bureau of Reclamation's Cooperative Watershed Management Program Phase I funding to support the Moses Lake Watershed Council (MLWC). Through GCCD's leadership, the MLWC has grown into an active committee of diverse stakeholders who are committed to finding and implementing local solutions to improve, protect, and preserve water quality in the watershed for present and future generations.

Participating in the MLWC is important to our organization as Moses Lake is an integral aspect and reliant on watershed integrity, so supporting the MLWC and engaging in watershed management and restoration planning is important to our organization because of the community and greater area benefits resulting from good water quality.

We are confident with Reclamation's financial support that GCCD will be able to strengthen and expand the development and operations of the MLWC and will be able to lead an effective watershed restoration planning process resulting in a Watershed Management and Restoration Plan. Through increased coordination and collaboration, we will identify, develop, and implement watershed programs and projects that leverage resources and address multiple water resource concerns.

We look forward to continuing to be an active member of this important watershed group and are committed to ensuring a successful watershed planning and implementation process. If you have any questions, please don't hesitate to contact me at 509-795-8716.

Sincerely,

Chris Overland
Manager | MLIRD



January 7, 2021

Avra Morgan, CWMP Coordinator
Robin Graber, Program Analyst
Bureau of Reclamation
Water Resources and Planning Office
P.O. Box 25007
Denver, CO 80225

Re: Letter of Support for the Cooperative Watershed Management Program

Dear Ms. Morgan & Ms. Graber,

We are pleased to express the Moses Lake Chamber of Commerce and Response Team's support for the Grant County Conservation District's (GCCD) proposal for the Bureau of Reclamation's Cooperative Watershed Management Program Phase I funding to support the Moses Lake Watershed Council (MLWC). Through GCCD's leadership, the MLWC has grown into an active committee of diverse stakeholders who are committed to finding and implementing local solutions to improve, protect, and preserve water quality in the watershed for present and future generations.

Our organization's mission is to create and maintain a prosperous local economy, community, and quality lifestyle. Participating in the MLWC is important to our organization for the following reasons: our lake is our biggest community asset and we must protect it. Supporting the MLWC and engaging in watershed management and restoration planning is important to our organization because it is vital to our local economy and quality of life.

We are confident with Reclamation's financial support that GCCD will be able to strengthen and expand the development and operations of the MLWC and will be able to lead an effective watershed restoration planning process resulting in a Watershed Management and Restoration Plan. Through increased coordination and collaboration, we will be able to better identify, develop and implement watershed programs and projects that leverage resources and address multiple water resource concerns.

We look forward to continuing to be an active member of this important watershed group and are committed to ensuring a successful watershed planning and implementation process. If you have any questions, please don't hesitate to contact me at 509-750-4232 or director@moseslake.com.

Sincerely,

A handwritten signature in cursive script that reads "Debbie Doran-Martinez".

Debbie Doran-Martinez
President & CEO
Moses Lake Chamber of Commerce



January 7, 2021

Avra Morgan, CWMP Coordinator
Robin Graber, Program Analyst
Bureau of Reclamation
Water Resources and Planning Office
P.O. Box 25007
Denver, CO 80225

Re: Letter of Support for the Cooperative Watershed Management Program

Dear Ms. Morgan & Ms. Graber,

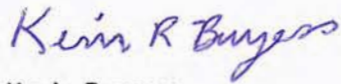
I'm pleased to express Moses Lake-Othello Association of Realtors' support for the Grant County Conservation District's (GCCD) proposal for the Bureau of Reclamation's Cooperative Watershed Management Program Phase I funding to support the Moses Lake Watershed Council (MLWC). Through GCCD's leadership, the MLWC has grown into an active committee of diverse stakeholders who are committed to finding and implementing local solutions to improve, protect, and preserve water quality in the watershed for present and future generations.

Our organization's mission is to advocate for home ownership, property rights, and quality of life for all residents in our community. Participating in the MLWC is important to our organization for the following reasons: our lake is vital to our community for recreation, tourism, sports fishing, and quality of life for the residents in Moses Lake who live on the lake and those who use it for relaxing and enjoying it year around. It is also vital for the fish and wildlife. Supporting the MLWC and engaging in watershed management and restoration planning is important to our organization because the lake is one of our biggest assets as it brings in tourism that support our local businesses.

We are confident with Reclamation's financial support that GCCD will be able to strengthen and expand the development and operations of the MLWC and will be able to lead an effective watershed restoration planning process, resulting in a Watershed Management and Restoration Plan. Through increased coordination and collaboration, we will be able to better identify, develop and implement watershed programs and projects that leverage resources and address multiple water resource concerns.

We look forward to continuing to be an active member of this important watershed group and are committed to ensuring a successful watershed planning and implementation process. If you have any questions, please don't hesitate to contact me at 509-750-8097.

Sincerely,

A handwritten signature in blue ink that reads "Kevin R Burgess". The signature is written in a cursive style.

Kevin Burgess,
2021 President, Moses Lake-Othello Association of REALTORS®



January 13, 2021

Avra Morgan, CWMP Coordinator
Robin Graber, Program Analyst
Bureau of Reclamation
Water Resources and Planning Office
P.O. Box 25007
Denver, CO 80225

Re: Letter of Support for the Cooperative Watershed Management Program

Dear Ms. Morgan & Ms. Graber,

Moses Lake LEAD would like to express our support for the Grant County Conservation District's (GCCD) proposal for the Bureau of Reclamation's Cooperative Watershed Management Program Phase I funding to support the Moses Lake Watershed Council (MLWC). Through GCCD's leadership, the MLWC has grown into an active committee of diverse stakeholders who are committed to finding and implementing local solutions to improve, protect, and preserve water quality in the watershed for present and future generations.

Moses Lake LEAD is a collaboration of community residents and business leaders with the goal of purposefully creating, planning, and building the Moses Lake of tomorrow. Our goal is to recognize and honor our past as we work together across organizational, ethnic and economic lines as one community to jointly build the future. In the end providing Washington State's unmatched place to live, work and play.

Participating in the MLWC is important to our organization for the following reasons: Moses Lake is our largest community asset and we must protect it. Supporting the MLWC and engaging in watershed management and restoration planning is important to our organization because it is vital to tourism, our local economy and quality of life.

We are confident that GCCD, with Reclamation's financial support, will be able to strengthen and expand the development and operations of the MLWC and allow them to lead an effective watershed restoration planning process resulting in a Watershed Management and Restoration Plan. Through increased coordination and collaboration, we will be able to better identify, develop and implement watershed programs and projects that leverage resources and address multiple water resource concerns.

We look forward to continuing to be an active member of this important watershed group and are committed to ensuring a successful watershed planning and implementation process. Please contact me or any of our Board of Directors below with questions.

Sincerely,

Theresa Sullivan, Chair - Moses Lake LEAD

Executive Committee:

Past Chair: Terry Leas

Chair: Theresa Sullivan

Vice Chair: Caralyn Bess

Sec/Treasurer: Debbie Doran-Martinez

At Large: Ryan Holterhoff

Moses Lake LEAD Board of Directors:

Theresa Sullivan, CEO – Samaritan Healthcare | 509-793-9700

Caralyn Bess, Regional Publisher – Hagadone Media/WA | 509-765-4561

Debbie Doran-Martinez, President/CEO – Moses Lake Chamber of Commerce | 509-750-4232

Ryan Holterhoff, Community Relations Director – Grand PUD | 509-750-3184

Terry Leas, Past President - Big Bend Community College | 509-793-2001

Richard Hanover, Business Development Director - Port of Moses Lake | 509-762-5363

Brant Mayo, Executive Director – Grant County EDC | 509-764-6579

Barry Lawson, Past President, ML/Othello Realtors Assoc., Owner, Windermere RE | 509-7665-3337

Brandon Nicholas, Executive Director, Downtown Moses Lake Business Association | 509-770-1700

Annie Fisher, Owner – Guild Mortgage | 509-766-7788

Roger Hochstetler, Owner/Financial Advisor - Edward Jones Investments | 509-765-9100

Christina Boyll, Executive Assistant – Samaritan Healthcare | 509-793-9701



Moses Lake Clinic
840 E. Hill Ave.
Moses Lake, WA 98837
509 764 6400
confluencehealth.org

January 8, 2021

Avra Morgan, CWMP Coordinator
Robin Graber, Program Analyst
Bureau of Reclamation
Water Resources and Planning Office
P.O. Box 25007
Denver, CO 80225

Re: Letter of Support for the Cooperative Watershed Management Program

Dear Ms. Morgan & Ms. Graber,

I am writing to express Confluence Health's support for the Grant County Conservation District's (GCCD) proposal for the Bureau of Reclamation's Cooperative Watershed Management Program Phase I funding to support the Moses Lake Watershed Council (MLWC). Through GCCD's leadership, the MLWC has grown into an active committee of diverse stakeholders who are committed to finding and implementing local solutions to improve, protect, and preserve water quality in the watershed for present and future generations.

Confluence Health's mission is health care based and our vision revolves around improving health and quality of life. The ML Watershed is important to our organization since it directly impacts the health and quality of life of the residents in this part of our service area. Supporting the MLWC and engaging in watershed management directly supports our mission and vision. Restoration planning is important to our organization because of the wide impact to many aspects of Grant County including health, economic development, recreation as well as recruitment and retention of our employees.

We are confident with Reclamation's financial support that GCCD will be able to strengthen and expand the development of the MLWC resulting in a Watershed Management and Restoration Plan.

Sincerely,

Gregg Fletcher MT(ASCP)
Vice President
Grant County Operations



January 4, 2021

Avra Morgan, CWMP Coordinator
Robin Graber, Program Analyst
Bureau of Reclamation
Water Resources and Planning Office
P.O. Box 25007
Denver, CO 80225

Re: Letter of Support for the Cooperative Watershed Management Program

Dear Ms. Morgan & Ms. Graber,

I'm pleased to express Cascade Marina support for the Grant County Conservation District's (GCCD) proposal for the Bureau of Reclamation's Cooperative Watershed Management Program Phase I funding to support the Moses Lake Watershed Council (MLWC). Through GCCD's leadership, the MLWC has grown into an active committee of diverse stakeholders who are committed to finding and implementing local solutions to improve, protect, and preserve water quality in the watershed for present and future generations.

Our organization's mission is serving the boating public of Grant County. Participating in the MLWC is important to our organization for the following reasons: water quality is paramount to recreational opportunity. Supporting the MLWC and engaging in watershed management and restoration planning is important to our organization because the watershed council is the only vehicle at this time that can restore water quality.

We are confident with Reclamation's financial support that GCCD will be able to strengthen and expand the development and operations of the MLWC and will be able to lead an effective watershed restoration planning process resulting in a Watershed Management and Restoration Plan. Through increased coordination and collaboration, we will be able to better identify, develop and implement watershed programs and projects that leverage resources and address multiple water resource concerns.

We look forward to continuing to be an active member of this important watershed group and are committed to ensuring a successful watershed planning and implementation process. If you have any questions, please don't hesitate to contact me at (509)765-6718.

Sincerely,

Ron and Rebecca Sawyer
Owners, Cascade Marina

Appendix G - Project Budget

Council Development & Restoration Planning for the Moses Lake Watershed

BUDGET ITEM DESCRIPTION	COMPUTATION		Quantity Type	TOTAL COST
	\$/Unit	Quantity		
Salaries and Wages				
GCCD - Program Coordinator	\$45.00	509	hours	\$22,905.00
GCCD - Lead Watershed Planner	\$45.00	1188	hours	\$53,460.00
Fringe Benefits				
GCCD - Program Director	15%	22905		\$3,532.64
GCCD - Program Coordinator	15%	53460		\$8,245.14
Travel				
GCCD	\$0.58	800	miles	\$460.00
Equipment				
				\$0.00
Supplies and Materials				
ASUS 512GB + Microsoft Office	\$954.00	1	half cost	\$954.00
Outreach Material	\$0.13	2500	Brouchure	\$325.00
Bulk Mailing	\$0.40	1377	Bulk Mail Permit	\$550.80
Meeting and Office Supplies	\$179.52	1	Printing/Copying	\$179.52
Postage	\$0.55	540	Program Announcement & Reports	\$297.00
Contractual/Construction				
				\$0.00
Other				
				\$0.00
TOTAL DIRECT COSTS				\$90,909.09
Indirect Costs				
GCCD	10.00%	\$0.00		\$9,090.91
TOTAL ESTIMATED PROJECT COSTS				\$100,000.00

Council Development & Restoration Planning for the Moses Lake Watershed

Travel

Trip Description	Cost/mi	Miles	Trip total
Ex. Trip 1 - Grant County Conservation District to Connelly Park (Round Trip - Monthly)	\$ 0.58	432	\$ 248.40
Ex. Trip 2 - Grant County Conservation District to Washington State Potato Commission Office Monthly MLWC Meeting (Round Trip)	\$ 0.58	240	\$ 138.00
Ex. Trip 3 - Grant County Conservation District to City of Moses Lake Public Meeting (Round Trip -Monthly)	\$ 0.58	48	\$ 27.60
Ex. Trip 4 - Grant County Conservation District to Grant County Commissionar Office (Round Trip)	\$ 0.58	110	\$ 63.25
	Total	\$ 0.58	830 \$ 477.25

Council Development & Restoration Planning for the Moses Lake Watershed

BUDGET ITEM DESCRIPTION	COMPUTATION		Quantity Type	TOTAL COST	References
	\$/Unit	Quantity			
Supplies and Materials					
ASUS 512 GB Laptop	\$1,679	1	half cost	\$840	ASUS ROG STRIX G17.3" Laptop https://www.newegg.com/black-asus-rog-strix-g1731gt-ph74-everyday-value/p/1TS-001A-
Microsoft Office Product	\$230	1	half cost	\$115	soft https://www.newegg.com/microsoft-office-home-and-business-2019-1-device-windows-10-pc-mac-key-card/p/N82E16832350773?Description=microsoft%20office&cm_re=microsoft_office--32-350-773--Product&quicklink=true
Two separate sets of outreach brochures	\$0	2500	EA	\$325	https://www.uprinting.com/brochure-printing.html?attr3=143&attr1=15601&attr7=153&attr4=164&attr5=1133&attr6=199&product_id=4&h1=Custom%20Trifold%20Brochures&iv=iv_p_1_a_6516893685_g_77987061963_c_383476846073_k_m_w_pla-296643746811_n_u_d_c_v_l_t_r_x_y_336948_f_online_o_4866_z_US_i_en_j_29_6643746811_s_e_h_9033697_ii_vi_&pl_a=iv_p_1_a_6516893685_g_77987061963_c_383476846073_k_m_w_pla-296643746811_n_u_d_c_v_l_t_r_x_y_336948_f_online_o_4866_z_US_i_en_j_29_6643746811_s_e_h_9033697_ii_vi_&gclid=Cj0KCQiA9P_BRC0ARIsAEZ6iri_Z45egJz-x5pTVQdnaGAx5p672jc0aAN9RPYpqQyyex-OwHkpS28aAgQrEALw_wcB
Bulk Mailing	\$0	1377	EA	\$551	
Meeting and Office Supplies	\$180	1	EA	\$180	Including binders, file folders, printer paper, toner, staples, etc
Postage	\$1	540	EA	\$297	USPS Rate - 1st Class Letter
Total				\$2,307	

The UPS Store®

601 S Pioneer Way Ste F
 Moses Lake, WA 98837
 509-766-141-

Quote Information Sheet

Quote for: Grant Conservation District		Date Issued: 12.4.20	
Business Street Address:			
City:	State:	Zip Code:	
Authorized Representative: John			
Contact Phone #: 303-933-1119			
Email Address:			

Job/Project Information:

Qty	Job/Project Description	Amount Each	Amount
1377	Double Sided Color Mailer	\$.21 per side	\$578.34
100	Double Sided Color Flier – extra copies	\$.21 per side	\$42.00
1377	Variable Data	\$.03	\$41.31
1	Variable Data Setup Fee	\$25.00	\$25.00
1377	Bulk Rate	\$.40	\$550.80
1	Bulk Rate Fee	\$50.00	\$50.00
1	Tabbing Fee	\$100.00	\$100.00
		Tax:	**The Above Amounts Do Not Include Tax
		Total:	\$1387.45

Notes:
Thank you for letting us quote this project for your business. This quote is valid 30 days from the date issued. If you have any questions, please feel free to call Lisa at 509-766-1410 or email at store2469@theupsstore.com .
A message from your business team at The UPS Store in Moses Lake: <i>It would be a pleasure to serve your business. Please call us if you have any questions concerning the above quote or about other services we offer.</i>

FREE SHIPPING

Item#: 9SIAMRPC5S0635



ASUS ROG Strix G Black Gaming Laptop - GL731GT-PH74 - 17.3" FHD 120 Hz - Intel Core i7-9750H (2.60 GHz) - NVIDIA GeForce GTX 1650 - 16GB DDR4 512GB PCIe SSD - Windows 10 Home 64-bit



Sold and shipped by: **Apollo Premium Electronics**
86 Ratings (85% Positive)

\$1,679⁰⁰

OR
4 interest-free payments of **\$419.75** with **quadpay**

OR
\$139.92 /mo.

Suggested monthly payment with 12 months special financing on your Newegg Store Credit Card. Important mo. payment info.

(11) [Write a Review](#)

[Ask Or Answer A Question](#)

SHARE

See more "[asus rog strix laptop](#)"



In stock.

Ships from United States.
Most customers receive within **4-7 days.**

- NVIDIA GTX 1650 4GB GDDR5
- 9th Gen Intel Core i7-9750H (2.60 GHz)
- 16GB DDR4 512GB PCIe SSD
- 17.3" Full HD (1920x1080) 120Hz Display
- 3 x USB 3.1 Gen Type-A
- 15.7" x 11.5" x 1.0"

Save 15% on Allstate Protection Plans with the purchase of qualifying hardware

1 **ADD TO CART**

[ADD TO COMPARE](#) [PRICE ALERT](#)

[ADD TO WISH LIST](#)
Found on 1 wish list

Special Business Offers

Shopping for business: Create a FREE business account. For business-only pricing, quantity discounts and product motions. **START SAVING TODAY!**



BUILD WITH TOP PROCESSORS

[Shop Now](#)

RECOMMENDED FOR YOU

Similar Items



(1)

F158 ultra-thin gaming laptop notebook 15.6-inch, 1920*1080p , Intel...



ASUS ROG Strix G17 G712LU Gaming and Entertainment Laptop...



Laptop/Notebooks Computer - 15.6" F1 3.5GHz,1920*1080p



WARM UP WITH OUR TOP HEATERS

[Stay Cozy](#)

ARE YOU AN E-BLAST INSIDER?

Enter Email Address

SUBSCRIBE

\$536.99

Add to Compare

\$2,299.99

Add to Compare

\$336.99

Add to Compare

TOP FAVORABLE REVIEW

Best Computer I have Ever Owned

Overall Review: bought this 18 months ago and i am still blown away the amount PC u get for the value. first PC with a SSD and finally understand why people say you can never go back to a HDD.

- BabyFutaGrIAlice posted on 5/17/2020

TOP CRITICAL REVIEW

Asus ROG GL731 GT review. Average

Overall Review: This is a not bad laptop. missing a webcam Average at best. Performance is good but Average at best.

- Bones197123 posted on 3/13/2020

 [WRITE A REVIEW](#)




Shop without retying payment details. Secure shopping made faster. Check out with PayPal.

Overview

Specs

Reviews

Q & A


Question about the product info?  [FEEDBACK](#)

Make sure this fits by entering your model number. Nvidia GeForce GTX 1650 4GB

GDDR5 (base: 1395 MHz, Boost: 1560 MHz;

TDP: 50W)Latest 9th Gen Intel Core i7-9750h Hexa-Core processor 17,3??? Full HD 1920x1080 IPS Type Display16GB DDR4 2666MHz RAM | 512GB PCIe SSD | Windows 10 Home | Gigabit wave 2 Wi-Fi 5 (802.11AC 2x2)Rog intelligent cooling Thermal system with dual 12V fans, anti-dust technology, and adjustable fan modes

Style: 17.3" | 16G | 512G | GTX 1650With a streamlined and focused design, the ROG Strix g gaming Laptop melds the latest 9th Gen Intel Core processors and GeForce graphics into an impactful gaming experience, with ample power to slice through serious content creation and everyday multi-tasking. Boasting up to a 144Hz refresh rate display with ultra-narrow bezel and PCIe SSD, the ROG Strix g GL731 has all the power needed to conquer the latest game titles without breaking a sweat. *The actual transfer speed of USB 3.0, 3.1 (Gen 1 and 2), and/or Type-C will vary depending on many factors including the processing speed of the host device, file attributes and other factors related to a system configuration and your operating environment.

Question about the product info?  [FEEDBACK](#)

WARRANTY & RETURNS

WARRANTY, RETURNS, AND ADDITIONAL INFORMATION

Warranty

Limited Warranty period (parts): 1 year

Limited Warranty period (labor): 1 year

[Read full details](#)

Return Policies

Return for refund within: 30 days

Return for replacement within: 30 days

This item is covered by [Apollo Premium Electronics Return Policy](#)

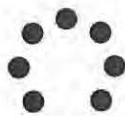
Manufacturer Contact Info

[Manufacturer Website](#)

Support Phone: 812-282-2787

[Support Website](#)

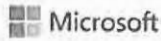
[View other products from ASUS](#)



LOADING...

FREE SHIPPING

Item#: N82E16832350773



Microsoft Office Home & Business 2019 | One-time purchase, 1 device | PC/Mac Keyword

(25) [Write a Review](#)

[See 3 Questions](#)

See more "[microsoft office](#)"

SHARE

In stock.

Ships from United States.

Option: **Office Home & Business 2019**

Office Home & Business 2019

Office Home & Student 2019

Microsoft 365 Family

Microsoft 365 Business Standard

Microsoft 365 Personal

- One-time purchase for 1 device
- System requirements: Windows 10 or Mac OS
- Classic 2019 versions of Word, Excel, PowerPoint, and Outlook
- Install on 1 PC or Mac
- Microsoft support included for 60 days at no extra cost
- Licensed for home and commercial use

5 [New](#) from **\$229.99**

Please note that this product is non-returnable and non-refundable.



Sold by: **Newegg**

~~\$249.99~~

\$229.99

OR

4 interest-free payments of **\$57.50** with **quadpay**

OR

OR

\$38.33 /mo.

Suggested monthly payment with 6 months special financing on your Newegg Store Credit Card. Important mo. payment info.

Save: ~~\$20.00~~ (8%)

1 **ADD TO CART**

[ADD TO COMPARE](#) [PRICE ALERT](#)

[ADD TO WISH LIST](#)

Found on 5 wish lists

BEST SELLERS

PlatinumMicro

5,713 (87% Positive)

\$239.99

+ FREE SHIPPING

[VIEW DETAILS](#)

Electronic Express

2,230 (86% Positive)

\$249.00

+ FREE SHIPPING

[VIEW DETAILS](#)

Technology Galaxy

1,797 (78% Positive)

\$264.15

+ FREE SHIPPING

[VIEW DETAILS](#)

Compare offers from more sellers as low as **\$229.99** plus shipping

Special Business Offers

Shopping for business: Create a FREE business account. For business-only pricing, quantity discounts and product

RECOMMENDED FOR YOU

Similar Items

Customers Also Bought





(25)

Microsoft Office Home & Student 2019 | One-time Purchase, 1 Device | PC...

\$139.00

Add to Compare



(27)

Microsoft Office Home and Business 2019 | 1 device, Windows 10...

~~\$249.99~~
\$219.99

Add to Compare



(90)

Microsoft Office Professional 2013 Product Key Card -

\$349.99

Add to Compare

promotions. **START SAVING TODAY!**

ARE YOU AN E-BLAST INSIDER?

Enter Email Address

SUBSCRIBE



Shop without retyping payment details. Secure shopping made faster. Check out with PayPal.

- Overview
- Specs
- Reviews
- Q & A

Question about the product info? [FEEDBACK](#)

Product image

Get the classic versions of Office apps

For families and small businesses who want classic Office apps and email installed on one PC or Mac for use at home or work.

Product image

Choose the product that's right for your business

Product image

How to install Office Home & Business 2019



How to install on your PC



How to install on your Mac/iPad

Product Q&A

Appendix H - Official Resolution



**GRANT COUNTY CONSERVATION DISTRICT
GRANT COUNTY, WASHINGTON
RESOLUTION NO. 01122021-01**

WHEREAS, the Board of Supervisors of the Grant County Conservation District (GCCD) operates under the laws of the State of Washington applicable to conservation districts.

WHEREAS, the District is governed by a five-member board, as set out in RCW 89.08 and WAC Section 135-110.

WHEREAS, the Grant County Conservation District's WaterSMART grant application is for GCCD to apply as the lead entity for the Moses Lake Watershed Council (MLWC). GCCD will administer the grant and ensure all outcomes are completed in the timeline outlined. The GCCD is requesting funding from the Bureau of Reclamation's WaterSMART program to support the MLWC board members and ensure the following:

1. A diversity of watershed stakeholders is engaged to define the scope and desired outcomes of the watershed planning process;
2. Facilitate stakeholder workshops;
3. Develop a Watershed Management Plan;
4. Develop and implement a Public Education and Outreach Plan.

It is RESOLVED, the Grant County Conservation District Board of Supervisors has:

1. Reviewed and authorizes the submission for a WaterSMART grant application to the Department of Interior Bureau of Reclamation and authorizing the acceptance of any resulting grant award;
2. Direct either Harold Crose or Marie Lotz to work with Reclamation to meet any and all established deadlines for entering into a grant or cooperative agreement.

ADOPTED at a Regular Meeting of the Board of Directors of the Grant County Conservation District held on January 12, 2021.

Dave Stadelman – Chairman

Richard Leitz – Vice Chair

Glenn Burkholder – Member

John Preston – Member

Dan Roseburg - Auditor

Appendix I - Mandatory Federal Forms

Application for Federal Assistance SF-424

* 1. Type of Submission:

- Preapplication
 Application
 Changed/Corrected Application

* 2. Type of Application:

- New
 Continuation
 Revision

* If Revision, select appropriate letter(s):

* Other (Specify):

* 3. Date Received:

01/04/2021

4. Applicant Identifier:

5a. Federal Entity Identifier:

5b. Federal Award Identifier:

State Use Only:

6. Date Received by State:

7. State Application Identifier:

8. APPLICANT INFORMATION:

* a. Legal Name:

Grant County Conservation District

* b. Employer/Taxpayer Identification Number (EIN/TIN):

75-3182146

* c. Organizational DUNS:

7931958300000

d. Address:

* Street1:

1107 S. Juniper Drive

Street2:

* City:

Moses Lake

County/Parish:

* State:

WA: Washington

Province:

* Country:

USA: UNITED STATES

* Zip / Postal Code:

98837

e. Organizational Unit:

Department Name:

Grant County Conservation

Division Name:

f. Name and contact information of person to be contacted on matters involving this application:

Prefix:

* First Name:

Elliott

Middle Name:

* Last Name:

DeLong

Suffix:

Title:

Outreach Coordinator

Organizational Affiliation:

Grant County Conservation District

* Telephone Number:

509.765.9618

Fax Number:

* Email:

elliott-delong@conserveva.net

Application for Federal Assistance SF-424

*** 9. Type of Applicant 1: Select Applicant Type:**

D: Special District Government

Type of Applicant 2: Select Applicant Type:

Type of Applicant 3: Select Applicant Type:

* Other (specify):

*** 10. Name of Federal Agency:**

US Bureau of Reclamation

11. Catalog of Federal Domestic Assistance Number:

CFDA Title:

*** 12. Funding Opportunity Number:**

BOR-DO-21-F003

* Title:

WaterSMART Cooperative Watershed Management Program Phase 1 Grants

13. Competition Identification Number:

Title:

14. Areas Affected by Project (Cities, Counties, States, etc.):

Add Attachment

Delete Attachment

View Attachment

*** 15. Descriptive Title of Applicant's Project:**

Council Development & Restoration Planning for the Moses Lake Watershed

Attach supporting documents as specified in agency instructions.

Add Attachments

Delete Attachments

View Attachments

Application for Federal Assistance SF-424

16. Congressional Districts Of:

* a. Applicant

* b. Program/Project

Attach an additional list of Program/Project Congressional Districts if needed.

17. Proposed Project:

* a. Start Date:

* b. End Date:

18. Estimated Funding (\$):

* a. Federal	<input type="text" value="100,000.00"/>
* b. Applicant	<input type="text" value="0.00"/>
* c. State	<input type="text" value="0.00"/>
* d. Local	<input type="text" value="50,000.00"/>
* e. Other	<input type="text" value="0.00"/>
* f. Program Income	<input type="text" value="0.00"/>
* g. TOTAL	<input type="text" value="150,000.00"/>

*** 19. Is Application Subject to Review By State Under Executive Order 12372 Process?**

- a. This application was made available to the State under the Executive Order 12372 Process for review on
- b. Program is subject to E.O. 12372 but has not been selected by the State for review.
- c. Program is not covered by E.O. 12372.

*** 20. Is the Applicant Delinquent On Any Federal Debt? (If "Yes," provide explanation in attachment.)**

Yes No

If "Yes", provide explanation and attach

21. *By signing this application, I certify (1) to the statements contained in the list of certifications and (2) that the statements herein are true, complete and accurate to the best of my knowledge. I also provide the required assurances** and agree to comply with any resulting terms if I accept an award. I am aware that any false, fictitious, or fraudulent statements or claims may subject me to criminal, civil, or administrative penalties. (U.S. Code, Title 218, Section 1001)**

** I AGREE

** The list of certifications and assurances, or an internet site where you may obtain this list, is contained in the announcement or agency specific instructions.

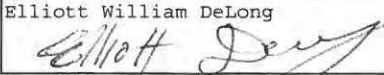
Authorized Representative:

Prefix: * First Name:
Middle Name:
* Last Name:
Suffix:

* Title:

* Telephone Number: Fax Number:

* Email:

* Signature of Authorized Representative:


* Date Signed:

ASSURANCES - NON-CONSTRUCTION PROGRAMS

Public reporting burden for this collection of information is estimated to average 15 minutes per response, including time for reviewing instructions, searching existing data sources, gathering and maintaining the data needed, and completing and reviewing the collection of information. Send comments regarding the burden estimate or any other aspect of this collection of information, including suggestions for reducing this burden, to the Office of Management and Budget, Paperwork Reduction Project (0348-0040), Washington, DC 20503.


PLEASE DO NOT RETURN YOUR COMPLETED FORM TO THE OFFICE OF MANAGEMENT AND BUDGET. SEND IT TO THE ADDRESS PROVIDED BY THE SPONSORING AGENCY.

NOTE: Certain of these assurances may not be applicable to your project or program. If you have questions, please contact the awarding agency. Further, certain Federal awarding agencies may require applicants to certify to additional assurances. If such is the case, you will be notified.

As the duly authorized representative of the applicant, I certify that the applicant:

1. Has the legal authority to apply for Federal assistance and the institutional, managerial and financial capability (including funds sufficient to pay the non-Federal share of project cost) to ensure proper planning, management and completion of the project described in this application.
2. Will give the awarding agency, the Comptroller General of the United States and, if appropriate, the State, through any authorized representative, access to and the right to examine all records, books, papers, or documents related to the award; and will establish a proper accounting system in accordance with generally accepted accounting standards or agency directives.
3. Will establish safeguards to prohibit employees from using their positions for a purpose that constitutes or presents the appearance of personal or organizational conflict of interest, or personal gain.
4. Will initiate and complete the work within the applicable time frame after receipt of approval of the awarding agency.
5. Will comply with the Intergovernmental Personnel Act of 1970 (42 U.S.C. §§4728-4763) relating to prescribed standards for merit systems for programs funded under one of the 19 statutes or regulations specified in Appendix A of OPM's Standards for a Merit System of Personnel Administration (5 C.F.R. 900, Subpart F).
6. Will comply with all Federal statutes relating to nondiscrimination. These include but are not limited to: (a) Title VI of the Civil Rights Act of 1964 (P.L. 88-352) which prohibits discrimination on the basis of race, color or national origin; (b) Title IX of the Education Amendments of 1972, as amended (20 U.S.C. §§1681-1683, and 1685-1686), which prohibits discrimination on the basis of sex; (c) Section 504 of the Rehabilitation Act of 1973, as amended (29 U.S.C. §794), which prohibits discrimination on the basis of handicaps; (d) the Age Discrimination Act of 1975, as amended (42 U.S.C. §§6101-6107), which prohibits discrimination on the basis of age; (e) the Drug Abuse Office and Treatment Act of 1972 (P.L. 92-255), as amended, relating to nondiscrimination on the basis of drug abuse; (f) the Comprehensive Alcohol Abuse and Alcoholism Prevention, Treatment and Rehabilitation Act of 1970 (P.L. 91-616), as amended, relating to nondiscrimination on the basis of alcohol abuse or alcoholism; (g) §§523 and 527 of the Public Health Service Act of 1912 (42 U.S.C. §§290 dd-3 and 290 ee-3), as amended, relating to confidentiality of alcohol and drug abuse patient records; (h) Title VIII of the Civil Rights Act of 1968 (42 U.S.C. §§3601 et seq.), as amended, relating to nondiscrimination in the sale, rental or financing of housing; (i) any other nondiscrimination provisions in the specific statute(s) under which application for Federal assistance is being made; and, (j) the requirements of any other nondiscrimination statute(s) which may apply to the application.
7. Will comply, or has already complied, with the requirements of Titles II and III of the Uniform Relocation Assistance and Real Property Acquisition Policies Act of 1970 (P.L. 91-646) which provide for fair and equitable treatment of persons displaced or whose property is acquired as a result of Federal or federally-assisted programs. These requirements apply to all interests in real property acquired for project purposes regardless of Federal participation in purchases.
8. Will comply, as applicable, with provisions of the Hatch Act (5 U.S.C. §§1501-1508 and 7324-7328) which limit the political activities of employees whose principal employment activities are funded in whole or in part with Federal funds.

9. Will comply, as applicable, with the provisions of the Davis-Bacon Act (40 U.S.C. §§276a to 276a-7), the Copeland Act (40 U.S.C. §276c and 18 U.S.C. §874), and the Contract Work Hours and Safety Standards Act (40 U.S.C. §§327-333), regarding labor standards for federally-assisted construction subagreements.
10. Will comply, if applicable, with flood insurance purchase requirements of Section 102(a) of the Flood Disaster Protection Act of 1973 (P.L. 93-234) which requires recipients in a special flood hazard area to participate in the program and to purchase flood insurance if the total cost of insurable construction and acquisition is \$10,000 or more.
11. Will comply with environmental standards which may be prescribed pursuant to the following: (a) institution of environmental quality control measures under the National Environmental Policy Act of 1969 (P.L. 91-190) and Executive Order (EO) 11514; (b) notification of violating facilities pursuant to EO 11738; (c) protection of wetlands pursuant to EO 11990; (d) evaluation of flood hazards in floodplains in accordance with EO 11988; (e) assurance of project consistency with the approved State management program developed under the Coastal Zone Management Act of 1972 (16 U.S.C. §§1451 et seq.); (f) conformity of Federal actions to State (Clean Air) Implementation Plans under Section 176(c) of the Clean Air Act of 1955, as amended (42 U.S.C. §§7401 et seq.); (g) protection of underground sources of drinking water under the Safe Drinking Water Act of 1974, as amended (P.L. 93-523); and, (h) protection of endangered species under the Endangered Species Act of 1973, as amended (P.L. 93-205).
12. Will comply with the Wild and Scenic Rivers Act of 1968 (16 U.S.C. §§1271 et seq.) related to protecting components or potential components of the national wild and scenic rivers system.
13. Will assist the awarding agency in assuring compliance with Section 106 of the National Historic Preservation Act of 1966, as amended (16 U.S.C. §470), EO 11593 (identification and protection of historic properties), and the Archaeological and Historic Preservation Act of 1974 (16 U.S.C. §§469a-1 et seq.).
14. Will comply with P.L. 93-348 regarding the protection of human subjects involved in research, development, and related activities supported by this award of assistance.
15. Will comply with the Laboratory Animal Welfare Act of 1966 (P.L. 89-544, as amended, 7 U.S.C. §§2131 et seq.) pertaining to the care, handling, and treatment of warm blooded animals held for research, teaching, or other activities supported by this award of assistance.
16. Will comply with the Lead-Based Paint Poisoning Prevention Act (42 U.S.C. §§4801 et seq.) which prohibits the use of lead-based paint in construction or rehabilitation of residence structures.
17. Will cause to be performed the required financial and compliance audits in accordance with the Single Audit Act Amendments of 1996 and OMB Circular No. A-133, "Audits of States, Local Governments, and Non-Profit Organizations."
18. Will comply with all applicable requirements of all other Federal laws, executive orders, regulations, and policies governing this program.
19. Will comply with the requirements of Section 106(g) of the Trafficking Victims Protection Act (TVPA) of 2000, as amended (22 U.S.C. 7104) which prohibits grant award recipients or a sub-recipient from (1) Engaging in severe forms of trafficking in persons during the period of time that the award is in effect (2) Procuring a commercial sex act during the period of time that the award is in effect or (3) Using forced labor in the performance of the award or subawards under the award.

<p>SIGNATURE OF AUTHORIZED CERTIFYING OFFICIAL</p> <p>Elliott William DeLong</p> 	<p>TITLE</p> <p>Outreach Coordinator</p>
<p>APPLICANT ORGANIZATION</p> <p>Grant County Conservation District</p>	<p>DATE SUBMITTED</p> <p>01/15/2021</p>

BUDGET INFORMATION - Non-Construction Programs

OMB Number: 4040-0006
Expiration Date: 02/28/2022

SECTION A - BUDGET SUMMARY

Grant Program Function or Activity (a)	Catalog of Federal Domestic Assistance Number (b)	Estimated Unobligated Funds		New or Revised Budget		
		Federal (c)	Non-Federal (d)	Federal (e)	Non-Federal (f)	Total (g)
1. Program Coordinator		\$ 30,628.90	\$	\$	\$	\$ 30,628.90
2. Lead Watershed Planner		69,371.10				69,371.10
3.						
4.						
5. Totals		\$ 100,000.00	\$	\$	\$	\$ 100,000.00

SECTION B - BUDGET CATEGORIES

6. Object Class Categories	GRANT PROGRAM, FUNCTION OR ACTIVITY				Total (5)
	(1) Program Coordinator	(2) Lead Watershed Planner	(3)	(4)	
a. Personnel	\$ 22,905.00	\$ 53,460.00	\$	\$	\$ 76,365.00
b. Fringe Benefits	3,532.64	8,245.14			11,777.78
c. Travel	184.00	276.00			460.00
d. Equipment					
e. Supplies	1,280.00	1,026.32			2,306.32
f. Contractual					
g. Construction					
h. Other					
i. Total Direct Charges (sum of 6a-6h)	27,901.64	63,007.46			\$ 90,909.10
j. Indirect Charges	2,727.26	6,363.64			\$ 9,090.90
k. TOTALS (sum of 6i and 6j)	\$ 30,628.90	\$ 69,371.10	\$	\$	\$ 100,000.00
7. Program Income	\$	\$	\$	\$	\$

SECTION C - NON-FEDERAL RESOURCES				
(a) Grant Program	(b) Applicant	(c) State	(d) Other Sources	(e)TOTALS
8. Program Coordinator	\$ 30,628.90	\$	\$	\$ 30,628.90
9. Lead Watershed Planner	69,371.10			69,371.10
10.				
11.				
12. TOTAL (sum of lines 8-11)	\$ 100,000.00	\$	\$	\$ 100,000.00

SECTION D - FORECASTED CASH NEEDS					
	Total for 1st Year	1st Quarter	2nd Quarter	3rd Quarter	4th Quarter
13. Federal	\$ 50,000.00	\$ 13,205.00	\$ 12,265.00	\$ 12,265.00	\$ 12,265.00
14. Non-Federal	\$				
15. TOTAL (sum of lines 13 and 14)	\$ 50,000.00	\$ 13,205.00	\$ 12,265.00	\$ 12,265.00	\$ 12,265.00

SECTION E - BUDGET ESTIMATES OF FEDERAL FUNDS NEEDED FOR BALANCE OF THE PROJECT				
(a) Grant Program	FUTURE FUNDING PERIODS (YEARS)			
	(b)First	(c) Second	(d) Third	(e) Fourth
16. Program Coordinator	\$ 15,314.45	\$ 15,314.45	\$	\$
17. Lead Watershed Planner	34,685.55	34,685.55		
18.				
19.				
20. TOTAL (sum of lines 16 - 19)	\$ 50,000.00	\$ 50,000.00	\$	\$

SECTION F - OTHER BUDGET INFORMATION	
21. Direct Charges: 90909.10	22. Indirect Charges: 9090.10
23. Remarks:	

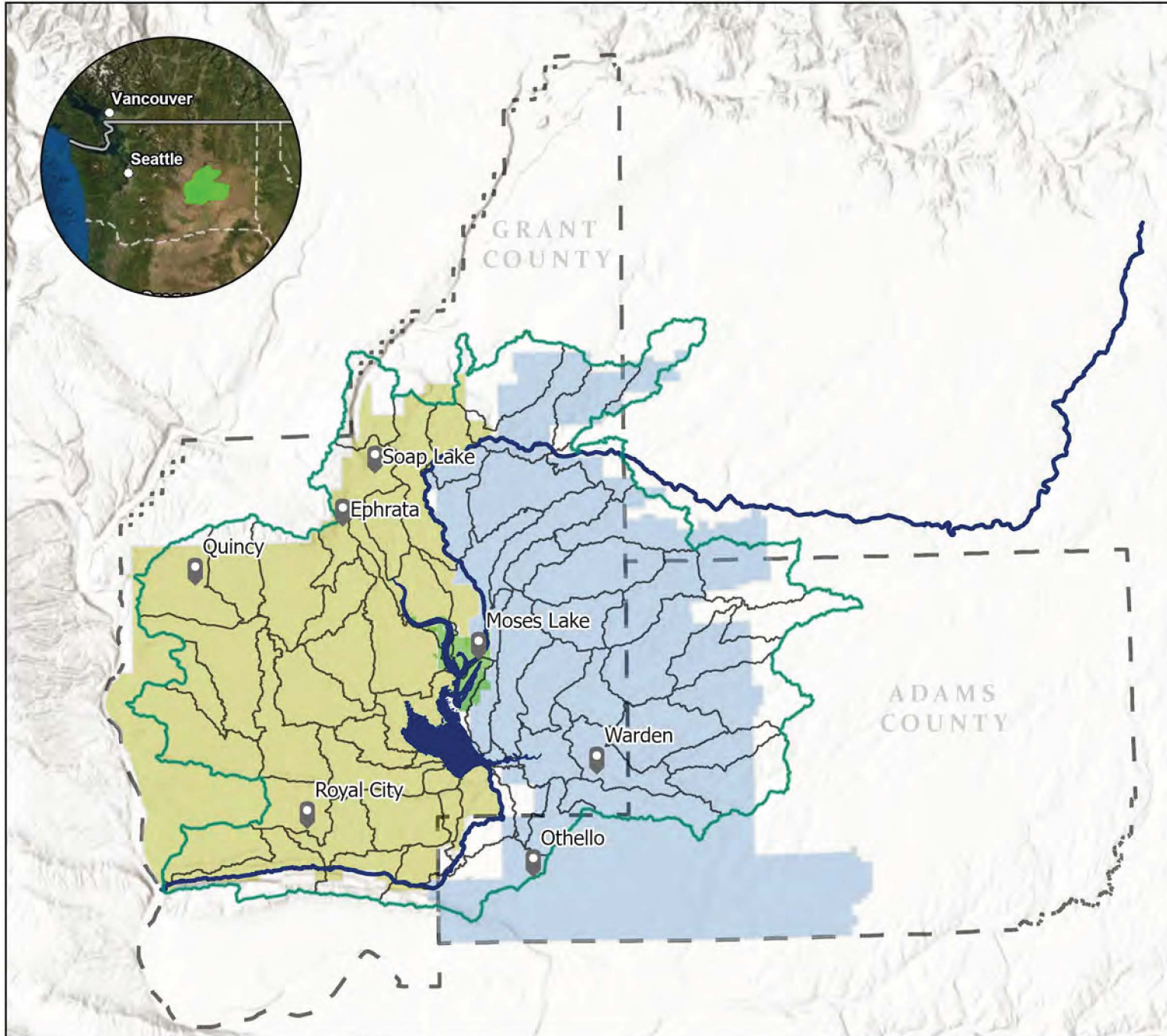
DISCLOSURE OF LOBBYING ACTIVITIES

Complete this form to disclose lobbying activities pursuant to 31 U.S.C.1352

OMB Number: 4040-0013
Expiration Date: 02/28/2022

1. * Type of Federal Action: <input type="checkbox"/> a. contract <input checked="" type="checkbox"/> b. grant <input type="checkbox"/> c. cooperative agreement <input type="checkbox"/> d. loan <input type="checkbox"/> e. loan guarantee <input type="checkbox"/> f. loan insurance	2. * Status of Federal Action: <input type="checkbox"/> a. bid/offer/application <input checked="" type="checkbox"/> b. initial award <input type="checkbox"/> c. post-award	3. * Report Type: <input checked="" type="checkbox"/> a. initial filing <input type="checkbox"/> b. material change
4. Name and Address of Reporting Entity: <input checked="" type="checkbox"/> Prime <input type="checkbox"/> SubAwardee * Name: Grant County Conservation District * Street 1: 1107 S. Juniper Drive Street 2: * City: Moses Lake State: WA: Washington Zip: 98834 Congressional District, if known:		
5. If Reporting Entity in No.4 is Subawardee, Enter Name and Address of Prime:		
6. * Federal Department/Agency: Bureau of Reclamation	7. * Federal Program Name/Description: BOR-DO-21-F003 waterSMART Cooperative Watershed Management Program Phase 1 CFDA Number, if applicable:	
8. Federal Action Number, if known:	9. Award Amount, if known: \$	
10. a. Name and Address of Lobbying Registrant: Prefix * First Name Brynn Middle Name * Last Name Brady Suffix * Street 1: 701 North G St. Street 2: * City: Tacoma State: WA: Washington Zip: 98403		
b. Individual Performing Services (including address if different from No. 10a) Prefix * First Name Brynn Middle Name * Last Name BRady Suffix * Street 1: Street 2: * City: State: Zip:		
11. Information requested through this form is authorized by title 31 U.S.C. section 1352. This disclosure of lobbying activities is a material representation of fact upon which reliance was placed by the tier above when the transaction was made or entered into. This disclosure is required pursuant to 31 U.S.C. 1352. This information will be reported to the Congress semi-annually and will be available for public inspection. Any person who fails to file the required disclosure shall be subject to a civil penalty of not less than \$10,000 and not more than \$100,000 for each such failure. * Signature: Elliott William DeLong * Name: Prefix * First Name Elliott Middle Name William * Last Name DeLong Suffix Title: Outreach Coordinator Telephone No.: 5097659618 Date: 01/08/2021		
Federal Use Only:		Authorized for Local Reproduction Standard Form - LLL (Rev. 7-97)

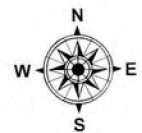
MOSES LAKE WATERSHED



JANUARY 18, 2021

PROJECT AREA LEGEND

- Moses Lake Watershed
- Grant - Adams County
- HUC 12 Cities
- Water Bodies and Watercourse
- Moses Lake Irrigation & Rehabilitation District
- East Columbia Basin Irrigation District
- Quincy-Columbia Basin Irrigation District



0 3 6 12 18 24 Miles