

Aravaipa Watershed Conservation Alliance
36933W Klondyke Rd Willcox, AZ 85643

Cooperative Watershed Organizational and Management Plan

Project Manager – Matt Magoffin 928-828-2471
matt.magoffin@aravaipa.org

Table of Contents

Technical proposal and evaluation criteria

Executive summary.....	Pg 2
Project location.....	Pg 3
Technical project description and milestones.....	Pg 5
Evaluation criteria.....	Pg 8
Project Budget.....	Pg 19
Environmental and cultural resources compliance.....	Pg 22
Required permits or approvals.....	Pg 24
Letters of project support.....	Appendix
Official resolution.....	Appendix
Contractor Quotes.....	Appendix

Executive Summary

January 12, 2021

Aravaipa Watershed Conservation Alliance

Klondyke, Graham Co, Arizona

The Aravaipa Watershed Conservation Alliance (AWCA) is seeking funding and assistance in the amount of \$89,938 from the Bureau of Reclamation (BOR): WaterSMART Cooperative Watershed Management Program (CWMP) as a new watershed group to 1) expand the capacity and diversity of the organization, and 2) produce a watershed restoration plan that will prepare the AWCA for the eventual development of a Regional Conservation Partnership Program (RCPP). The AWCA intends for this two year, Phase I grant to build and support stakeholder efforts that would both conserve and restore water and water quality by creating: 1) a large scale restoration plan that addresses all the unique aspects of the Aravaipa watershed that includes agriculture, recreation, native fish species and other native wildlife and plant communities, 2) sustainability of both open space grassland grazing and natural resources, 3) efforts to stretch scarce water supplies and avoid conflicts over water by creating partnerships and collaborative projects, and 4) restoring trust with local communities by improving relationships and communication with federal agencies, states agencies, native american tribes, local governments, communities, landowners and other organizations. Through the CWMP, the AWCA intends to create a diverse group of stakeholders to form local solutions that address the watershed restoration and conservation needs. Funding for this project will also support the development of plans for high priority areas that are supported by the AWCA, its partners and landowners in the Aravaipa Watershed. The restoration plan will build off of data and work accomplished during the BOR's Internal Applied Science Tools project in partnership with the AWCA from 2020-22. The majority of funds requested will support contractual expertise in meeting planning and facilitation to increase the diversity of AWCA's partners, plan development and review and technical planning assistance, along with administrative assistance to the Board. The AWCA is not a membership-based organization, but open to all interested participants. The project will include lands of the U.S. Forest Service (USFS), Bureau of Land Management (BLM) and Arizona State Trust Lands (AZSLD). The Nature Conservancy Aravaipa Preserve, as well as private landowners who are interested, are welcome to participate in developing a comprehensive watershed management plan for the Aravaipa watershed.

Quote: "The AWCA's goal of the CWMP is to organize large scale watershed restoration by building a diverse group of working partners to identify and collaboratively work towards projects in the Aravaipa Watershed that will potentially increase water quantity and quality, soil health, air quality, provide for native species while ensuring sustainable agriculture for the future." *Matt Magoffin, president of the Aravaipa Watershed Conservation Alliance*

Project Location

Aravaipa Canyon is located about 50 miles west of Safford, Arizona, along the border of Graham and Pinal counties. The Aravaipa watershed area (**Figure 1**) is ~537 mi² (~1400 km²), with an elevation range of 2,160-8,441 ft (ADWR 1991). The ten-digit Hydrologic Unit Codes (HUC) for the area are: HUC-1505020307 and HUC-1505020304. In the upper watershed, surface flow is ephemeral to intermittent in a broad alluvial valley between the Pinaleno and Santa Teresa Mts. to the east, and Galiuro Mts. to the west. The creek becomes perennial at Aravaipa Spring, at the head of Aravaipa canyon near Stowe Gulch, and cuts westward through the Galiuros.

Aravaipa Creek’s 20-mile-long perennial-flow stretch is considered to have the best remaining assemblage of desert fishes in Arizona, with seven native species, including two federally listed endangered species: spikedace (*Meda fulgida*) and loach minnow (*Tiaroga cobitis*). Other wildlife using the area include the threatened Mexican spotted owl (*Strix occidentalis lucida*), and Western yellow-billed cuckoo (*Coccyzus americanus occidentalis*).

Riparian habitats support Sycamore, Cottonwood, Willow, Walnut, Ash, and White Oak and Mesquite bosques line higher terraces above the floodplain. Low-elevation upland areas are dominated by Sonoran Desert scrub with Mesquite, Creosote, Palo Verde, diverse shrubs and saguaro. Mid-elevation slopes have semi desert grassland/scrub with native perennial grasses. Steeper slopes at middle and upper elevations support evergreen woodlands of oak and juniper and mixed chaparral. About 65% of the nearby watershed (including 5 BLM allotments) includes some type of grassland or mixed grass vegetation type (Arizona GAP Project).

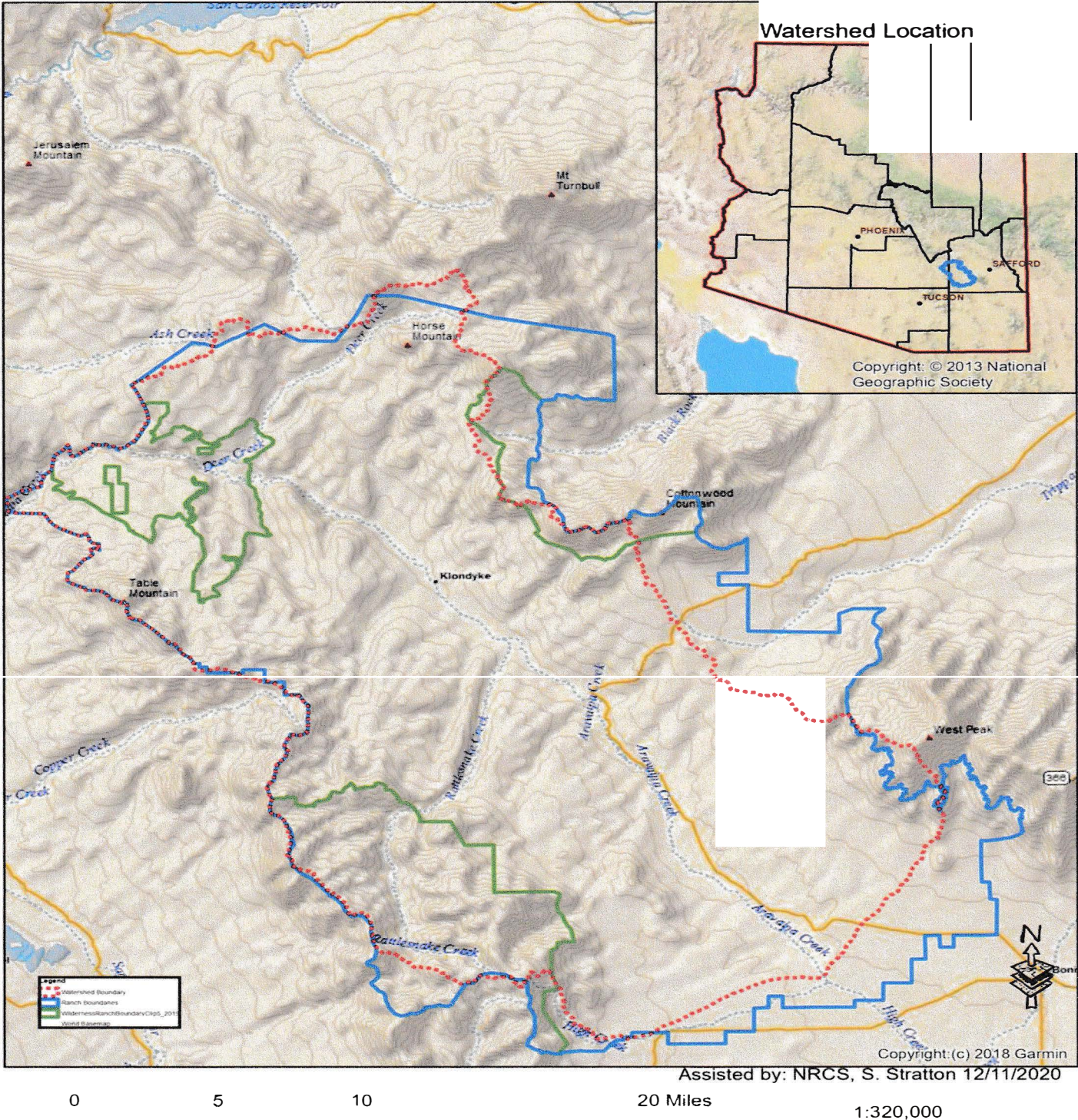
Average annual precipitation ranges from 14 inches at Klondyke to 20 inches in the upper watershed and is winter-dominated (Norgren and Spears 1980). Land ownership in the Aravaipa consists roughly of 59,000 acres of private land mixed with 144,636 acres of state land. There are also large federal land blocks around the Aravaipa valley area which total roughly 177,622. (See **Table 1**)

The Aravaipa watershed, which consists of the communities of Bonita and Klondyke, is remote and sparsely populated and infrastructure is underdeveloped or non-existent. According to the U.S. Census American Community Survey, the population estimate for Bonita-Klondyke in 2018 was 2,910. Private acres in the watershed are approximately 59,012 with 24,840 of those acres in or adjacent to Aravaipa Creek. Private lands represent 15% of the total AWCA working watershed.

Table 1. Land Ownership

Owner	total acres	Acres in wilderness	% of AWCA watershed
US Forest Service	117,616	45,828	31%
BLM	60,006	17,404	16%
AZ State Trust	144,636	144,638	38%
Private Land	59,012		15%
Total acres of AWCA working watershed	381,270		100%

Figure 1.



Technical Project Description

Applicant Category: New Watershed Group

The AWCA is seeking funding as a new watershed group as they are a relatively new non-profit in the state of Arizona and in need of assistance with capacity building, board training, planning and project identification and development. The group originally met in 2016 and formed a non-profit, 501(c)(3). It is the intention of the group to be a grassroots entity that addresses water availability and quality issues within the relevant watershed. The group will promote the sustainable use of water resources in the watershed and improve the functioning condition of Aravaipa Creek, which is a tributary to the San Pedro River and in turn, the Gila River through: watershed conservation, improved water quality, ecological resilience including the protection of habitat of the native fishes in the perennial waters. All of these decisions will be made on a consensus basis defined by the bylaws of the watershed group. The group will focus on community education and outreach to reduce conflicts over water and the development of watershed enhancement projects that mutually benefit multiple stakeholders. Of primary concern related to the watershed area are erosion/flood control, sediment control and evaluation, recharge areas, increased fragmentation (subdividing), non-native plant species, irresponsible recreational activity, drought, water adjudication and lack of education/information to stakeholders. The AWCA recognizes the importance of sustainable agriculture in protecting native species and open space. It is an important goal to restore fragmented landscapes before they are developed potentially causing greater soil erosion and loss of native grasses important to water infiltration.

The AWCA has been working with the Bureau of Reclamation through an Internal Applied Science Tools project awarded in July 2020. The AWCA is excited to have the opportunity to apply for CWMP funding and receive technical assistance and expertise through collaborative stakeholder meetings.

Mission Statement: “The goal of the Aravaipa Watershed Conservation Alliance is to preserve and sustain the Aravaipa Valley’s natural landscapes by means of watershed and rangeland restoration. The AWCA will create a renewed environment that supports wildlife, grassroots community education, and a holistic agricultural environment, all while limiting fragmented lands to promote a complete and functioning landscape for current and future generations.”

Watershed planning activities have been minimal as the organization has focused on establishing itself as a legal entity with bylaws and an organizational structure that works to benefit the participants in the watershed area. The AWCA has created a website, Aravaipa.org and social media on Facebook to date. The goal is to begin building participation from all interested landowners including working cattle ranches, residence and property owners in the larger Eureka Springs Ranch subdivision area and other private landowners within the watershed. Funds will be used to contract a Board Administrator(BA) that will assist the AWCA in meeting, outreach planning, facilitation, development of public education and information materials as well as relationship/partnership building. The AWCA will also contract a Plan Administrator (PA) to develop a large-scale watershed management plan utilizing existing conservation management plans from other sources, in meeting and outreach planning and facilitation, development of public education and information materials, relationship/partnership building, the development of a restoration plan utilizing existing restoration plans within the watershed area and data and

research gathered from BOR's Applied Science tool. The Board Administrator that will assist in the daily functions and communication of Board of Directors and Stakeholders. The AWCA will host one partner and two partner/stakeholder outreach meetings over the course of the project with various planning and capacity building activities designed to build consensus and leverage stakeholder resources to identify key priority issues and projects related to watershed and implementation planning. These meetings will create opportunities for the AWCA to create relationships with new and diverse organizations and agencies in addition to strengthening existing relationships. Additionally, the AWCA will meet with at least two other watershed groups to learn more about their work and experiences in creating a diversified and effective working group. The Plan administrator will conduct a review of existing restoration plans within the watershed area or watersheds of similar size, geography and scope, to inform the development of a restoration plan for the AWCA.

Eligibility of Applicant:

The AWCA is a 501(c)(3) registered non-profit in the State of Arizona and in good standing with the Arizona Corporation Commission. The Aravaipa watershed is affected by both the quality and quantity of water available. Drought, erosion, irresponsible public access and fragmentation threaten the quantity and quality of water. The AWCA is committed to educating and promoting the sustainable use of water resources and intends to do so through a variety of mechanisms outlined in this grant application.

Strategic Goals of the AWCA:

The AWCA established strategic organizational goals in the fall of 2019. The organizational goals are as follows:

1. Board training and education to work together more efficiently and effectively.
2. Improve methods of communication both internally and externally as an organization.
3. Strive for increased consensus among participants, partners and stakeholders.
4. Create a funding plan for permanent professional positions to operate the AWCA..
5. Develop an educational marketing and promotion plan to inform stakeholders, partners and the general public about the value and beauty of the Aravaipa area and the importance of conserving and preserving it for future generations.

The conservation project goals are:

1. Develop a comprehensive watershed management plan through funding and technical assistance from the BOR WaterSMART Cooperative Watershed Management Program
2. Identify and prioritize erosion and flood control projects including the development of water recharge areas
3. Mitigate the impact of land fragmentation through policy change, organizational partnerships and land acquisition when possible
4. Identify and prioritize range improvements throughout the area including wells, water storage, pipelines and fencing for better livestock distribution to create better rangeland health

Approach:**Task A – Stakeholder Outreach and Partnership Building**

The AWCA will build upon existing partnerships by hosting meetings to inform and invite additional stakeholders and technical advisors to develop strategies that address the needs and issues of the entire watershed. Existing partners will be asked to submit the names of organizations and agencies that they frequently work with that have been valuable contributors to the challenges other watershed groups have faced. In addition, the AWCA will meet with at least two other watershed groups in the state to determine who their partners have been and how they have identified and accessed additional resources and diversity among their members and stakeholders. From that list, the AWCA will ask for introductions and extend invitations to those potential partners to participate in the AWCA's planning processes to increase conservation practices and provide balanced stewardship.

The AWCA will engage the services of the Board Administrator (BA) to provide organizational oversight, manage stakeholder meetings, planning and activities. The BA will assist the AWCA Board in convening meetings with current and potential stakeholders for an introduction to the AWCA and the work it is engaged in. The BA will also assist in the development of educational and promotional materials concerning this project. Additionally, the BA will assist with day-to-day business activities, communication among board members and stakeholders, distribute information and serve as a point of contact for AWCA activities.

Task B – Watershed Restoration Planning

The AWCA will engage in a variety of activities to develop a watershed restoration plan. The AWCA will consult with agencies and partners in the area and solicit technical assistance from those agencies with resources and expertise to assist in planning. The AWCA will also utilize data gathered during the BOR Applied Science project. With the assistance of a Plan Administrator, a desk review of current restoration plans, historical data and best practices will be compiled to inform the AWCA Board and its partners before conducting two public planning sessions. Two sessions will include partner agencies and organizations. The other session will invite the general public, governmental subdivisions such as Graham County and advocacy groups.

The AWCA will request assistance from the Natural Resource Conservation Service (NRCS) for assistance through the Regional Conservation Partnership Program. AWCA, along with NRCS are partners on a BOR Internal Applied Science Tools project awarded to BOR's Phoenix Area Office to complete LiDAR for the entire watershed and the installation of two Soil Climate Analysis Network (SCAN) weather and soil monitoring stations. This technical assistance will open additional opportunities for the AWCA to identify potential partners and continue to diversify the efforts of the AWCA and the watershed.

The AWCA will develop educational materials, and information distribution channels through social media, the current webpage and relationships with local and statewide organizations such as Community Foundation of Southern Arizona, United Way of Graham and Greenlee counties,

Graham County and the San Carlos Apache Tribe to increase local stakeholder engagement and educate residents and recreationalists in the value of the watershed and how they can assist in protecting and preserving it.

The United States Geological Survey (USGS) worked with the AWCA in the early stages to create a watershed modeling program which can and will be used as part of the development of the watershed plan. The model is set to input different scenarios and you can see what the impacts may be to the watershed based on scientific data. The AWCA will be using this modeling program during this project

Evaluation Criteria

Sub-criterion A1. Watershed Group Diversity

The AWCA is seeking to meet sub-criterion A1, Watershed Group Diversity, by including and utilizing the expertise and interests of current partnerships with affected stakeholders in the watershed. The AWCA is a 501(c)(3) with a five member Board of Directors. Matt Magoffin is President (rancher/landowner) with Kathy Lackner as Secretary (rancher/landowner) and Katrina Schou as Treasurer (community resident). Mark Haberstitch (TNC, conservation) and Billy Lackner (rancher/landowner) are also Board of Directors. The AWCA does not have membership. It is open to participation for all public and private entities and individuals. One of the primary outcomes of this proposed project is to increase the diversity of the AWCA and its partners.

Here is a list of partners supporting this grant application with hopes of moving forward in future collaborations with AWCA:

US Department of Interior, Bureau of Land Management (BLM) – Environmental/Recreation
US Department of Agriculture, United States Forest Service, (USFS) Environmental/Recreation
US Fish & Wildlife Service, Ecological Services (USFWS) Environmental/Recreation
US Fish & Wildlife Service, Refuges, (USFWS) Environmental/Recreation
US Department of Agriculture, Agriculture Research Service, Southwest Watershed Research Center (USDA-ARS) – Arid Lands Research
US Geological Survey (USGS) - Environment
Arizona State Land Department (ASLD) – Resource Management/Recreation
Office of the State Forester, Arizona Department of Forestry and Fire Management (AZDFFM) – Resource management/ Recreation
Arizona Game & Fish Department (AZGFD) Environment/Recreation
The Nature Conservancy (TNC) - Environment
Gila Valley Natural Resource Conservation District (NRCD) – Environment/Agriculture
United Way of Graham and Greenlee Counties, (UWGGC) – Nonprofit/Education
Freeport McMoRan Incorporated (FMI) - Mining
Graham County Board of Supervisors – Government subdivision

Currently, the AWCA is working with the US Fish and Wildlife Service (USFWS) and the Arizona Department of Fire and Forestry Management (AZDFFM) to develop a pilot project to

utilize biochar on rangelands within the floodplain to try to get native grass reestablished. The bio-char program will eventually be set up to utilize unwanted brush and trees that will be turned into char and the char will be tilled into the ground so the ground can retain more moisture and nutrients for the native grasses and shrubs. After the grasses are established cattle grazing will be utilized to harvest the native grass seed and the cattle will be moved to other areas within the floodplain to organically distribute the seed.

In addition, NRCS and BOR are partners with the AWCA on current projects within the watershed. The AWCA will convene these affected stakeholders, along with others that are identified in the planning process, to identify common challenges as well as diverse interests, assess needs, and identify a future vision for the watershed. The remaining land and water users in the study area will be invited to planning activities, stakeholder engagement meetings and provided with the educational and promotional materials developed to inform as well as engage stakeholder participation in the AWCA to develop the restoration plan. The AWCA will host meetings to encourage new stakeholder engagement and relationship building among stakeholders and partners and determine potential projects for the watershed.

The AWCA will use grant funds to identify and engage affected partners/stakeholders to develop a process to identify the following concerns within the watershed:

Subdivision

Flooding

Erosion

Endangered native fishes

Soil heath

Watershed health

Sustainable agriculture

Public safety

Air quality

Restoration of native plants

The AWCA will use a consensus-based process to prioritize needs and prioritize short term and long-term watershed management solutions, then prepare a comprehensive watershed restoration plan.

Sub-criterion A2. Geographic Scope

Provide a map illustrating the geographic boundaries of the area in which the watershed group will work. See Figure 1 and Figure 2.

The map should also identify the location or boundaries of the stakeholder groups within the area and indicate which stakeholders are currently involved in the group and which will be targeted through outreach. If a map of stakeholder location cannot be provided, please describe the geographic scope of the area to the best of your knowledge.

Aravaipa Canyon is located about 50 miles west of Safford, Arizona, along the border of Graham and Pinal counties. The Aravaipa watershed area (**Figure 1**) is ~537 mi² (~1400 km²), with an elevation range of 2,160-8,441 ft (ADWR 1991). The ten-digit Hydrologic Unit Codes (HUC)

for the area are: HUC-1505020307 and HUC-1505020304. In the upper watershed, surface flow is ephemeral to intermittent in a broad alluvial valley between the Pinaleño and Santa Teresa Mts. to the east, and Galiuro Mts. to the west. The creek becomes perennial at Aravaipa Spring, at the head of Aravaipa canyon near Stowe Gulch, and cuts westward through the Galiuros.

The entire Aravaipa watershed area is part of the Lower San Pedro Watershed within the Gila River Basin in southeast Arizona. The AWCA working boundaries lay within Hydrologic Unit Code (HUC) for the area is: HUC-15050203 (10-digit code 04 and 07 respectively) (ALRIS 2006). The entire watershed, however, is divided by considerable geographical boundaries, remote rough roads, hours of highway travel and separate local county governments. The Lower San Pedro Watershed Alliance has been in contact with the AWCA and does share many similar interests, but it is the consensus of both groups that they are currently working on different goals.

Describe the extent to which the planned membership of the watershed group will represent the full geographic scope of the area in which the group intends to work. If applicable, describe the extent to which the watershed group already represents the geographic scope of the area.

As described in Sub-Criterion A1., the AWCA intends to develop relationships with all potential partners and affected stakeholders in the watershed. Current partners include:

US Department of Interior, Bureau of Land Management (BLM) – Environmental/Recreation
US Department of Agriculture, United States Forest Service, (USFS) Environmental/Recreation
US Fish & Wildlife Service, Ecological Services (USFWS) Environmental/Recreation
US Fish & Wildlife Service, Refuges, (USFWS) Environmental/Recreation
US Department of Agriculture, Agriculture Research Service, Southwest Watershed Research Center (USDA-ARS) – Arid Lands Research
US Geological Survey (USGS) - Environment
Arizona State Land Department (ASLD) – Resource Management/Recreation
Office of the State Forester, Arizona Department of Forestry and Fire Management (AZDFFM) – Resource management/ Recreation
Arizona Game & Fish Department (AZGFD) Environment/Recreation
The Nature Conservancy (TNC) - Environment
Gila Valley Natural Resource Conservation District (NRCD) – Environment/Agriculture
United Way of Graham and Greenlee Counties, (UWGGC) – Nonprofit/Education
Freeport McMoRan Incorporated (FMI) - Mining
Graham County Board of Supervisors – Political subdivision

A primary purpose of this proposed project is to assist the AWCA in adding additional partners and stakeholder to the watershed group. The AWCA will seek to add partnerships with private landowners in the Eureka Springs subdivision, the San Carlos Apache Tribe, the Graham County Chamber of Commerce, Eastern Arizona College (Safford, AZ) and Central Arizona College (Aravaipa Campus).

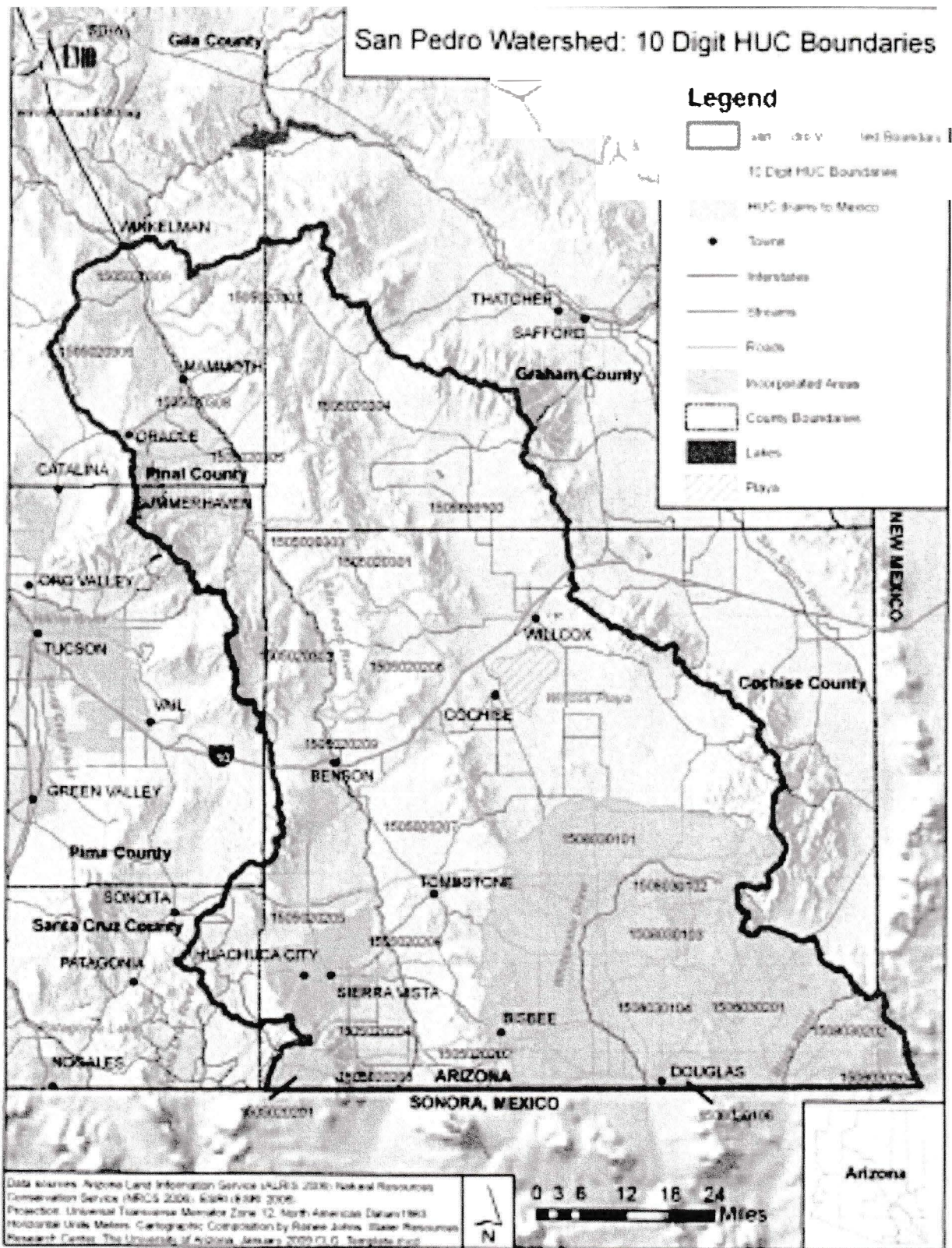
Describe the efforts that you will undertake to ensure that the watershed group will target stakeholders that represent the full geographic scope of the area in which the watershed group will work.

Outreach and educational activities designed to strengthen the AWCA's partnerships and group's diversity are described below:

The AWCA will build upon existing partnerships to inform and invite additional stakeholders and technical advisors to develop strategies that address the needs and issues of the entire watershed. Existing partners will be asked to submit the names of organizations and agencies that they frequently work with that have been valuable contributors to the challenges other watershed groups have faced. In addition, the AWCA will meet with at least two other watershed groups in the state to determine who their partners have been and how they have identified and accessed additional resources and diversity among their members and stakeholders. From that list, the AWCA will ask for introductions and extend invitations to those potential partners to participate in the AWCA's planning processes to increase conservation practices and provide balanced stewardship.

The AWCA will engage the services of a Board Administrator (BA) to provide organizational oversight, manage stakeholder meetings, planning and activities. The BA will assist the AWCA Board in convening meetings with current and potential stakeholders for an introduction to the AWCA and the work it is engaged in. The BA will also assist in the development of educational and promotional materials concerning this project. Additionally, the BA will assist with day-to-day business activities, communication among board members and stakeholders, distribute information and serve as point of contact for AWCA activities.

Figure 2.



Sub-criterion B1. Critical Watershed Needs or Issues

One of the primary catalysts for developing the AWCA and the need for a Cooperative Watershed Management Plan is the land fragmentation that has taken place in the watershed area over the last 25 years. County zoning ordinances allow land parcels to be split up to 4 times and a water well can be drilled on each split parcel. Increased residential use has also compromised the open space of the Aravaipa valley. Increased recreation activity with UTVs and ATVs, additional roads and lot disturbance to newly developed properties has aggravated erosion and air quality issues. The AWCA wishes to work with current residence and parcels owners to both educate and help find solutions to those issues.

Other critical issues will be addressed using a consensus-based process to prioritize needs in the short term and long-term watershed management solutions then prepare a comprehensive watershed management/restoration plan.

Due to land fragmentation and the lack of a Cooperative Watershed Management Plan, including robust partnerships and communication, the following is a list of critical issues that have been preliminarily identified as issues that need to be addressed within the watershed. It is anticipated that this project and the input and communication of all partners will assist the AWCA in identifying all of the critical issues along with proposed strategies and solutions for addressing them.

Flooding/erosion

Endangered native fish

Soil heath

Watershed health

Sustainable agriculture

Public safety

Air quality

Restoration of native plants

Water right issues

Sub Criterion B2. Developing Strategies to Address Critical Watershed Needs or Issues

Task A -Water Group Development:

While the AWCA has solicited the help of several affected stakeholders and partnering agencies, the watershed group has not developed a comprehensive list of needs and issues, including the expansion of and capacity of the organization itself through partnerships and key stakeholders. Identification of critical needs and issues is one of the outcomes that the AWCA intends to have from the activities outlined in this funding proposal.

The planning process of subdivided lands may include easement discussions and those might include access and public use. Preliminary conversations have occurred with organizations such as the Arizona Land and Water Trust and the Trust for Public Lands along the lines of conservation easements and public access.

Coordinated management with AWCA can ensure sustainability of the natural environment through improved management and restoration, while supporting a vibrant rural community.

If the watershed group will build on previous partnership building efforts, describe these efforts and how the watershed group will expand upon them through this grant.

The AWCA will build on the success of their partnerships with The Nature Conservancy, BLM, NRCS, Arizona Game & Fish Department (AZGFD) and others by reviewing and incorporating their previous planning efforts. The AWCA seeks to build relationships with other groups and agencies to increase diversity and expand purposes and uses of the watershed by all stakeholders.

Will the group establish relationships with conservation organizations advocating for balanced stewardship and use of public lands, or advocating for increased access to the Department lands for hunting, fishing, and other recreation? If so, how?

The AWCA has held conversations with groups that include Arizona Land & Water Trust, Trust for Public Lands, Sky Island Alliance and The Nature Conservancy. The AWCA promotes personal decisions for private landowners concerning access, but is willing to work with organizations that would assist in building and providing conservation easements to protect against further land fragmentation. The AWCA would like to build new and original programs that address lands specific to the Aravaipa in developing balanced stewardship with the collaboration of many diverse views.

Task B -Watershed Restoration Planning

During the drafting of the watershed management plan, the AWCA will propose planning projects to protect the native grasslands on any currently undeveloped lots from the Eureka Springs development, which are within the floodplain and design good restoration practices in those areas through the development of conservation easements. By sustaining the native grasslands one of the AWCA's goals can be achieved: sustainable agriculture along with protecting habitat for grassland dependent species. Involving all landowners will add a more diverse group of stakeholders to the process and encourage broader insight to the needs of the watershed. The plan will be based on scientific data that will be collected by utilizing Light Detection and Ranging (LiDAR) mapping to aid in identifying problem areas within the watershed and two Soil Climate Analysis Network (SCAN) systems to collect weather related data. These data collecting tools were made available to the AWCA by partnering with the BOR, NRCS and the USGS on a WaterSMART Applied Science Tools project which was started in mid-2020. The collection of mapping data is currently being reviewed. The continued use of LiDAR and future imagery can be used to determine sediments and soil erosion problem areas. The building of agency and other science driven partnerships to achieve the best solutions to project design is critical to restoration planning.

It should also be noted that there are legal water right issues within the entire Colorado and Gila River boundaries of Arizona, which include the Aravaipa watershed, due to the state's General Stream Adjudications process being conducted by the Arizona Supreme Court. The AWCA would like to add partners who could address the process of prioritizing existing water rights

private lands. The AWCA will seek the best practices available and will have open discussion with TNC as well as other established organizations with similar principles in engagement and planning efforts, along with utilizing their expertise in prioritizing projects.

Implementation and Results
Sub criterion C1—Project Implementation

The table below outlines the AWCA’s understanding and abilities to complete the tasks outlined below. Included in the table are timelines, milestones and approximate costs associated with each task. During the course of the grant, AWCA will expend in cash approximately \$76,500 in contractor fees and \$13,438 for travel, meeting space, printing, meeting and field supplies.

Table 1

Task	Timeline	Milestones	Approximate Costs
Increasing Watershed Group Diversity	On-going throughout the grant period.	A complete list of affected stakeholders and partners that will participate in the engagement and planning process	Costs included in the Board administrator contract & plan administrator.
Contract signed with Board Administrator (s)	Within 6 weeks of Award. Services provided months 1 – 24.	Develop smooth communication protocols, planning, facilitating discussion & administer grants.	\$50,000
Contract signed with Plan Administrator (s)	Within 6 weeks of Award Services provided months 1-24	Research, collaborate, draft restoration plan. Consistently collaborate with AWCA Board of directors	\$20,000
Project Partners Kick-off Meeting	Within 60 days of Award	<ul style="list-style-type: none"> Invitee list Agenda Presenters Identified and confirmed Space identified and confirmed Save the Date and Invitations out to stakeholders -Meeting held with 60% of invitees attending -Identification of critical watershed needs and issues. 	<ul style="list-style-type: none"> \$2,700 mtg facility, printing, mtg supplies, catering: \$1,200 facility, printing, supplies) (\$1,500 Food Services @ \$50.00 plate X 30 participants-estimate 60% attendance of 50 invitees) Additional Costs included Board administrator, Plan administrator,
Development of educational and	Within 90 days of Award	A one page brochure describing the goals and purpose of the AWCA along with the benchmarks of the grant	Costs Included in Board administrator services.

with conservation, restoration and water quality in mind. The Arizona General Stream Adjudications has and will be going for many, many years. It is the belief of the AWCA that the nature of this grant in building restoration and implementation plans and building a more diverse group of stakeholders will be beneficial for all of Arizona in the long-term outlook of water quality and quantity. The AWCA will involve more agency, educational groups and tribes as stakeholders and advisors once planning is in progress.

How does the group plan to gather information regarding the critical issues and needs of the watershed (e.g., contacting government agencies, talking to stakeholders, literature research, monitoring and modeling activities)? Will the group use science to identify best practices to manage land and water resources and adapt to changes in the environment? If so, how?

The AWCA will ask to review existing plans our partners currently have regarding restoration and conservation to ensure consistency and alignment with partnering agencies and groups throughout the region. The AWCA will use the data and information from the Applied Science project in planning activities and determining priority projects and/or areas.

To date, the group has identified declining ecological resilience, water shortages, flooding, structural impairments, water supply, water quality issues, invasive plant species, public safety related to flood events and land fragmentation as critical challenges to the future of the watershed area. Aravaipa Creek supports the best assemblage of native fish in Arizona with seven native species including two endangered species, spike dace and loach minnow.

The AWCA plans to develop community and agency meetings to find viable solutions to large scale watershed restoration rather than rely on small individual projects that do not cover the full impact of the scope of work needed.

Will the group identify opportunities to resolve conflicts? If so, how?

The AWCA will invite smaller property owners within the planning area to work with Graham County and the AWCA to understand their challenges and help them to understand the potential damaging impacts of continued land fragmentation in an effort to resolve competing interests.

Will the group complete an analysis to prioritize issues within the restoration plan?

The AWCA will work with partners and stakeholders to create a process and criteria for evaluating and prioritizing each project identified in the plan. There will be scoring criteria based upon level of impact to the watershed, level of impact to wildlife, safety, cost savings to partners, etc. This process and criteria will be evaluated annually.

If the watershed group will build on previous efforts, describe these efforts and how the watershed group will expand upon them through the proposed work.

The AWCA has a working partnership with TNC. The Nature Conservancy is known throughout the nation for its conservation efforts and advocacy for balanced use and wise stewardship of

informational materials			\$1,200 for printing, meeting space and materials
Two Community and Stakeholder Engagement in Visioning and Planning Process Meetings as well as smaller breakout meetings to accommodate schedules outside set dates.	within 180 days of Award	introduction and strategic planning/collaboration meetings held with community, stakeholders and partners	Costs Included in Board & Plan administrator \$3,000 for printing, meeting facilities and materials \$5,000 Food Services (\$50.00 plate X 100 participants) \$816 –Partnering Org Travel assistance: .56/mile x 400 miles \$14/meal x 8, \$120/room x 4/ 1.
Meet with 2 other Watershed Groups	within Months to 12 months	Gather Best Practices, potential partners and challenges	2851 – travel: IRS travel rate \$.56 per mile; average hotel cost \$120.00 Alter valley, Gila, Malapai Watersheds all options for visit approx 320 round trip x 2 Mileage= \$.56 X 320 miles X2 meetings way X3 vehicles=\$1075 Hotel= 12 rooms X \$120.00=\$1440 meals=\$14.00 x 24=\$336
Data and information collection	month 1 – month 6	Complete research to inform Restoration planning efforts, and a Cooperative Watershed Management Plan (CWMP) -A desk review of existing federal, state and regional plans	Costs Included in board services.
Development of Draft Plan including peer	On-going First Draft 12 months after award		Costs Included in board

review and revisions			administrator/plan administrator services
Final Restoration Plan	18 months after award	A completed Restoration plan developed by the AWCA and partners	Costs included in Board & Plan administrator services \$370 - Printing CMI Safford \$17.50 per copy X 20 copies
Identification of potential projects to address erosion/flood control	22 months after the award.	Prioritized Project list to initiate project design	
Field Expenses	24 months	Technology for field meetings, exploration and facilitation	\$4,000

Sub-criterion C2 – Building on Relevant Federal, State or Regional Planning Efforts

The AWCA will review plans existing in the area such as the Bureau of Land Management’s Aravaipa Ecosystem Management Plan (AEMP), the Coronado National Forest Management Plan and the Nature Conservancy’s San Pedro River Watershed Plan to use as the best science working forward to create a coordinated planning effort that takes in the diverse uses of the entire working area of the AWCA’s watershed.

Discovering and applying connections between Aravaipa watershed planning and other water related planning efforts has not occurred to date and represents an area of expanded activity for AWCA that will be facilitated through this project. Areas to target for enhanced coordination include: Graham County Board of Supervisors and Planning and Zoning, Gila Valley River Watershed Plan and San Carlos Apache Tribe planning documents.

The AWCA will also investigate a broad array of programs that are developing plans for drought contingency as well as planning proposals being presented by the Environmental Protection Agency (EPA) that would assist in problem solving areas such as air and soil health form pollutants and other historical environmental contaminants that may have occurred such as heavy metals from mines in the watershed.

Evaluation Criterion D: Department of the Interior and Bureau of Reclamation Priorities

DOI Priority: Creating a conservation stewardship legacy second only to Teddy Roosevelt

BOR Priority: Leverage Science and Technology to Improve Water Supply Reliability to Communities

DOI: Utilize science to identify best practices to manage land and water resources and adapt to changes in the environment;

The BOR began working with the AWCA in early 2020. In July of 2020, the BOR Phoenix Area Office received funding for the WaterSMART Applied Science Tools project. The Enhancement of LIDAR and PRECIPITATION & Soils Monitoring in the Aravaipa Watershed will be implemented over two years and include soil monitoring, weather tracking and LIDAR (light detection and ranging) data which will be incorporated into this project.

Review DOI water storage, transportation, and distribution systems to identify opportunities to resolve conflicts and expand capacity.

The AWCA will work with Graham county BOS and private landowners of fragmented lands in the Eureka Springs subdivision using the DOI's best practices and recommendations to resolve conflicts over water usage, additional private wells and septic systems to resolve conflicts, expand water capacity and identify specific projects for inclusion in the AWCA's restoration planning efforts.

DOI Priority: Restoring trust with local communities

Expand the lines of communication with Governors, state natural resource offices, Fish and Wildlife offices, water authorities, county commissioners, Tribes, and local communities.

The AWCA will consult with and seek input from the NRCS, US Fish and Wildlife Service, AZGFD, the Graham County Board of Supervisors, the communities of Bonita, Klondyke, Safford, Thatcher and Pima through the Graham County Chamber of Commerce as well as the San Carlos Apache Tribe to identify and address restoration challenges along the Aravaipa watershed. The AWCA will convene several partner and stakeholder meetings to gather input ideas and best practices. The AWCA will also include these partners in the review of the restoration plan and informational/educational documents.

The continued development of a watershed restoration plan will benefit the San Carlos Apache Reservation and Tribe through increased watershed functionality and associated benefits to downstream agriculture. Benefits also include improved fire management on both the Galiuro and Santa Teresa Wilderness areas through increased vegetation management. Currently, the San Carlos Apache is not an official partner in the AWCA restoration planning initiatives. AWCA will continue to reach out and include the San Carlos Apache Tribe. The learned knowledge from the AWCA and the creation of the watershed restoration plan will be openly shared with the San Carlos Apache Tribe

BOR Priority: Address Ongoing Drought

In this era of drought and diminished winter rains, the riparian vegetation represented in the Aravaipa valley's ephemeral drainages of all scales play an ever more important role relative to watershed condition, habitat productivity, and resilience to drought. The continued development of the AWCA's restoration plan will support the Department of Interior Drought Resilience Partnership by developing a watershed restoration plan that encourages every drop of rainwater to linger as long as possible on the land, move soil minimally, and grow native vegetation. This vital combination of water, soil, and vegetation is the critical foundation of all resource

management. The bonus of watershed conservation is that it provides fertile ground for collaboration, creating relationships and shared commitment to a place that binds communities together when addressing more contentious issues.

Project Budget

The total estimated project budget for this project is \$89,938 This proposal requests \$89,938 from Bureau of Reclamation WaterSMART, which would be augmented as follows:

Budget Proposal

The following tables outline the anticipated budget for this project.

Table 2

Source	Amount
Costs to be reimbursed with the requested Federal funding	\$89,938
Total Project Costs	\$89,938

Table 3	COMPUTATION		Type	TOTAL COST
	\$/Unit	Quantit		
Salaries and Wages				
Trip 1	.56 per mile \$14.00 per meal \$120 per room	320 Miles for 3 vehicles 12 Meals 1 nights Lodging for 6 ppl		\$1,426
Trip 2	.56 per mile \$14.00 per meal \$120 per room	320 Miles 12 Meals 1 nights Lodging for 6 ppl		\$1,426
Partnering org travel	.56 per mile \$14.00 per meal \$120 per room	400 Miles, 8 Meals 1 nights Lodging for 4 ppl		\$816
Supplies and Materials				
Print materials	\$17.50 per copy CWMP total \$370 and meeting agendas, educational	20 bound copies CRMP &		\$2,000

Meeting space,	and other meeting materials \$150/mtg, costs for heating, cooling, electric and DSL.	All meeting and brochure costs 12 mtg		\$1800
Meeting Supplies (Including Board mtgs)	\$110/mtg (Including Board meetings)	16 mtg		\$1970
Field Supplies	\$4,000, outdoor technology as well as emergency medical kits and supplies	duration of contract		\$4,000
Contractual/Construction				
Board Administrator, Facilitator, Community Outreach and Education Coordinator, Research, Data gathering,	Facilitation, Prep and Reporting for Partner and Stakeholder Sessions Community Outreach and Education (24 months) including developing written materials Weekly Communication w Board, Monthly Board Mtg Attendance, Reporting Full grant administration and reporting.	\$50,000 for duration of contract		\$50,000
Plan Administrator, Review existing restoration plan, final restoration plan writing and compilation.	Research, Data Gathering and existing plan review to complete a baseline CWMP/Restoration plan .	duration of contract		\$20,000

Food Services	Catering contract per events	Estimate \$50.00 per plate		\$6,500
Other				
TOTAL DIRECT COSTS				\$89,938
Indirect Costs				
Type of rate	percentge	\$base		\$0
TOTAL ESTIMATED PROJECT COSTS				\$89,938

Table #3 is submitted in the recommended format of BOR.

Budget Narrative

Salaries and Wages

Travel

The AWCA has asked for \$3,688 for travel as members of the Board will meet with at least two other watershed groups to identify effective strategies for diversifying and increasing board participation and capacity. Project funds will be used to pay for mileage, lodging and meals for Board members while traveling. There is an allocation for travel for partners who may not have money for travel in their respective budgets. The Aravaipa Watershed is in a remote location. State and Federal agencies based out of the Phoenix metropolitan area will have several hours of travel to and from the Aravaipa area. It is the desire of the AWCA to accommodate as many partnering agencies and stakeholders as possible for this project. Travel reimbursement is based on GSA rates.

The AWCA recognizes the challenges of travel during the social/meeting restrictions associated with COVID-19. The AWCA will also provide access to meetings and workshops via telephonic and teleconference opportunities.

Supplies and Materials

AWCA is requesting \$5,770 for meeting space, printing and printing materials including educational information, marketing information and printing of final materials. AWCA is also requesting \$4,000 for field supplies which include, but are not limited to one outdoor laptop, maps, emergency first aid supplies and adequate supplies of water, etc for any time spent in the outdoors. The AWCA anticipates hosting larger meetings at the Klondyke schoolhouse as well as maintaining a smaller office space for board meetings. However, the AWCA may need to secure more convenient meetings for larger gatherings and/or locations with better technology/distance services.

Contractors

The AWCA is requesting \$76,500 for three separate contract services:

Board Administrator will be responsible for meeting preparation, facilitating discussion, brochures and educational needs as well as assessment and planning. The Board Administrator will communicate with the Board on a weekly basis throughout the project period. The Board Administrator will develop a one-page educational document to be used for outreach in gathering stakeholders and developing both trust and interest in the AWCA planning process. The Board Administrator will also compile a complete list of all possible stakeholders and participants as well as a technological mailing list that is available for all board members. The BA will manage the grant and report monthly to the board. This contract will be awarded \$50,000 for the duration of the grant.

Plan Administer –The end delivery of this grant will be a baseline Cooperative Watershed Management Plan for use in all future projects. The Plan Administer will research, gather data, review existing plan(s), continually draft a Restoration Plan (or CWRP) while providing the Board with research and data associated with materials and information from both stakeholders and partners during the process. The Plan administer will compile a final draft approved by partners and stakeholders and have both electronic and paper versions for distribution at the end of the grant. This contract will be awarded \$20,000 for the duration of the grant.

Catering- A catering service will be contracted to provide meals for at least three larger meetings and several smaller partners meetings since there are no services within 50 miles of Klondyke. This contract is estimated at \$6,500 to cover catering services for all events necessary.

Cultural and Environmental Contingency Funds

The AWCA does not anticipate any costs associated with cultural and/or environmental impacts, this process is to develop a comprehensive restoration/Coordinated Watershed Management Plan and no disturbances are to occur under this planning phase.

Environmental and Cultural Resources Compliance

Will the proposed project impact the surrounding environment (e.g., soil [dust], air, water [quality and quantity], animal habitat)? Please briefly describe all earth-disturbing work and any work that will affect the air, water, or animal habitat in the project area. Please also explain the impacts of such work on the surrounding environment and any steps that could be taken to minimize the impacts.

At this time there are no anticipated activities that would cause any disturbance to the soil, air, water or animal habitat.

Are you aware of any species listed or proposed to be listed as a Federal threatened or endangered species, or designated critical habitat in the project area? If so, would they be affected by any activities associated with the proposed project?

The purpose of the project is to create a comprehensive watershed restoration plan to address the needs of the threatened and endangered species within the watershed which are listed above under Project Location.

Are there wetlands or other surface waters inside the project boundaries that potentially fall under CWA jurisdiction as “Waters of the United States”? If so, please describe and estimate any impacts the proposed project may have.

The purpose of this project is to create a watershed restoration plan that will be designed to reduce impacts to wetlands and the areas around surface waters. This project will help us identify previous impacted areas and address them without causing additional impacts.

When was the water delivery system constructed?

Not applicable, historically there were water diversion points along the Aravaipa Creek but have long been destroyed by flood events and are no longer in use.

Will the proposed project result in any modification of or effects to, individual features of an irrigation system (e.g., headgates, canals, or flumes)? If so, state when those features were constructed and describe the nature and timing of any extensive alterations or modifications to those features completed previously.

Not applicable, there are no irrigation canals in the area.

Are any buildings, structures, or features in the irrigation district listed or eligible for listing on the National Register of Historic Places? A cultural resources specialist at your local Reclamation office or the State Historic Preservation Office can assist in answering this question.

The Salazar Church and the Klondyke Store would be available for listing in the register of Historic Places if those owners applied to the program and possibly some of the older ranch houses in the area would meet the criteria for Historic Places. These are privately owned, and listing would be individual preference and not applicable to the grant.

Are there any known archeological sites in the proposed project area?

The Aravaipa was home to several ancient native American cultures (Hohokam, Mogollon, Salado) and later the Upper Pima and Sobaipuri, most of whom used the water for farming and lived along the creek. Historical flooding has most likely removed many sites. There are several known ruins recorded along the Aravaipa so it is possible smaller areas are still undiscovered. Archeological surveys would be performed on any project work that would require them.

Will the proposed project have a disproportionately high and adverse effect on low income or minority populations?

The planning would be a benefit to all populations as well as visitors to the area.

Will the proposed project limit access to, and ceremonial use of, Indian sacred sites or result in other impacts on tribal lands?

No, there will be no change to access.

Will the proposed project contribute to the introduction, continued existence, or spread of noxious weeds or non-native invasive species known to occur in the area?

The proposed project would create a plan to remove nonnative invasive species and restore native grasses in the area to increase water infiltration.

Required Permits or Approvals

While the AWCA does not anticipate any permits or approvals to be necessary in this project, they will obtain any necessary permits or approvals from county, state and federal agencies that may be required during this process.

Letters of Support

See attached

Official Resolution

See Attached

Aravaipa Watershed Conservation Alliance Organization Resolution #0001

Resolution to Seek Funding from BOR WaterSMART Program

We, the undersigned, Board of Directors of the Aravaipa Watershed Conservation Alliance (AWCA) consent and agree that the following resolution was made on January 11, 2021, during a special meeting of the board.

We do hereby consent to adoption of the following in accordance with state law and the bylaws of this organization. The Board of Directors for the AWCA have decided upon review of the funding requirements and application process for the BOR WaterSMART Cooperative Watershed Management Program – Phase I, that the AWCA shall submit an application and if funded comply with all funding requirements and reporting.

Therefore, it is resolved that the AWCA shall petition the BOR through the WaterSMART Cooperative Watershed Management Program for consideration of funding the activities and projects as outlined in the funding application.

The officers of this organization are authorized to perform the acts necessary to carry out this corporate resolution.


Director Signature

MATHEW D. HAGGOFFIN
Printed Name PRESIDENT

1/11/21
Date


Director Signature

Kathy Lachner
Printed Name SECRETARY

1-11-21
Date


Director Signature

KATRINA SCHOU
Printed Name TREASURER

1-11-21
Date


Director Signature

Mark Haberstick
Printed Name

1/11/21
Date


Director Signature

Bill Lachner
Printed Name

1/11/21
Date

The Secretary of the Aravaipa Watershed Conservation Alliance certifies that the above resolution is a correct copy of the resolution adopted by the directors on the date identified above.

Kathy Lackner
Secretary's Signature

Kathy Lackner
Printed Name Secretary

1-11-21
Date



United States Department of the Interior

U.S. GEOLOGICAL SURVEY

345 Middlefield Road, MS 531
Menlo Park, CA 94025

Date: January 8, 2021

Re: BOR Funding Opportunity BOR-DO-21-F003 – WaterSMART CWMP

To Whom it May Concern,

The USGS enjoys a good partnership with the Aravaipa Watershed Conservation Alliance (AWCA). Dr. Laura Norman has supported AWCA in their commitment to plan for sustainable development with consideration of long-term hydrological analyses. She was contracted for research by The Nature Conservancy to model how subdivision and development of rangelands within the Aravaipa Canyon, a remote and celebrated semi-arid watershed near the US–Mexico border, might affect multiple ecohydrological services provided, such as recharge of the aquifer, water and sediment yield, water quality, flow rates and downstream cultural and natural resources. This research as well as research supported under the USGS Land Change Science Program to model alternatives scenarios for development in Aravaipa, provides us a foundation and understanding for this project.

We feel the WaterSMART Cooperative Watershed Management Program (CWMP) would increase the capacity and effectiveness of the AWCA in fulfilling their mission and vision for the future of the Aravaipa Valley. As an active partner, we strongly support this application for funding from the Bureau of Reclamation through the WaterSMART CWMP. We are interested to remain active in the planning process and providing insight and expertise where our mission and scope align with the AWCA's goals and objectives. I welcome the opportunity for my center to be a part of this collaboration and work to help AWCA more fully develop their watershed group, complete watershed restoration planning activities, and design watershed management projects.

Sincerely,

SUSAN BENJAMIN

Digitally signed by SUSAN
BENJAMIN
Date: 2021.01.08 10:17:53 -08'00'

Susan Benjamin
Director, Western Geographic Science Center



United States Department of the Interior
BUREAU OF LAND MANAGEMENT

Safford Field Office
711 South 14th Avenue
Safford, Arizona 85546
928-348-4400
www.blm.gov/arizona



December 30, 2020

In Reply Refer To:
(6700)

RE: Funding Opportunity BOR-DO-21-F003, WaterSmart Cooperative Watershed Management Program Phase I Grants

Dear Grantors:

I would like to express my support for the grant submitted by the Aravaipa Watershed Conservation Alliance (AWCA) for funding to focus on watershed group development and restoration planning. The funding will be used by AWCA to build, expand, and diversify organizational capacity and to coordinate and integrate land management activities across land ownerships within the Aravaipa Creek watershed to address erosion, flood control, water quality and quantity, and invasive flora and fauna. These issues are all priorities for the Bureau of Land Management (BLM), Safford Field Office (SFO).

The goal of AWCA to sustain Aravaipa's natural landscapes through watershed and rangeland restoration aligns with and compliments the Aravaipa Ecosystem Management Plan (AEMP), a plan developed by BLM, SFO, partners, and stakeholders to cooperatively manage over 70,000 acres of riparian, aquatic, and upland habitats that support 353 species, 36 of which are threatened, endangered or species of concern. Additionally, the lands within the AEMP area and the broader Aravaipa Creek watershed covered by AWCA support diverse working landscapes of ranching, farming, and internationally recognized recreation. Coordinated management with AWCA can ensure sustainability of the natural environment through improved management and restoration, while supporting a vibrant rural community.

Sincerely,

SCOTT COOKE

Scott C. Cooke
Field Manager

Digitally signed by SCOTT
COOKE
Date: 2020.12.30 09:34:58
-07'00'



**GILA VALLEY NATURAL
RESOURCE CONSERVATION DISTRICT**
267 N. 8th Ave; Suite B- Safford, AZ 85546
Ph: (928) 428-5537 Ext 3593
amy.herbert@az.nacdnet.net

December 4, 2020

To Whom it May Concern,

The Gila Valley Natural Resource Conservation District would like to express their full support for the Aravaipa Watershed Conservation Alliance's application for grant funding. This group is working diligently to ensure that the watershed's natural resources are preserved for future generations.

We look forward to working with this group to implement conservation projects in the future.

Sincerely,

A handwritten signature in black ink, appearing to read "Dean Lunt".

Dean Lunt
Gila Valley NRCD



United States
Department of
Agriculture

Forest
Service

Coronado National Forest
Safford Ranger District

711 14th Ave., Suite D
Safford, Arizona 85546
Phone (928) 428-4150
FAX (928) 428-2393

Date: December 3, 2020

Bureau of Reclamation (BOR): to Whom It May Concern,

As a partner with Aravaipa Watershed Conservation Alliance (AWCA) the Forest Service supports their grant proposal for the WaterSmart Cooperative Watershed Management Program phase I grant (BOR-DO-21-FO03). The funding to support AWCA would help implement project to address stakeholders concern and identify practices that could help to mitigate current issues affecting the watershed.

Sincerely,

George Garcia
District Ranger





United States Department of the Interior



FISH AND WILDLIFE SERVICE

South Eastern Arizona National Wildlife Complex
P O Box 3509
7628 North Hwy. 191
Douglas, Arizona 85608

January 5, 2021

U.S. Department of the Interior
Bureau of Reclamation
WaterSMART Applied Science Grants
Funding Opportunity Announcement No. BOR-DO-21-F003

To Whom It May Concern,

We are writing this letter in support of the Aravaipa Watershed Conservation Alliance (AWCA) proposal for the DOI, Bureau of Reclamation, WaterSmart Cooperative Watershed Management Program (CWMP) Phase I BOR-DO-21-F003, specifically for their desire to develop a watershed management plan.

We continue to be encouraged by the AWCA's progress and that they seek to initiate development of a watershed management plan for their group. The AWCA is part of the US Fish & Wildlife Services Mogollon Emphasis Area for the protection of native fishes. We share common interests in protection and improvement of the watershed, which will have a positive impact on the native fish populations in the Aravaipa Creek. Supporting the AWCA also contributes to the US Fish & Wildlife Service Mission "*...to administer a national network of lands and waters for the conservation, management and, where appropriate, restoration of the fish, wildlife and plant resources and their habitats within the United States...*"

The AWCA is one of the largest un-fragmented landscapes in the state of Arizona and New Mexico, which provides habitat for wildlife. With this grant the group will be able to seek support and technical advice from their partners to identify problem areas (erosion, stream stabilization and encroachment of non-native plant species). Once the group has a developed plan, they can then prepare for implementation with on the ground action and results. The proposed plan will further benefit the landscape on a large scale. We are supportive of this proposal, and look forward to the AWCA continuing progress.

Sincerely,

TASHA HARDEN

Digitally signed by TASHA
HARDEN
Date: 2021.01.05 08:23:51 -07'00'

Tasha Harden
Assistant Refuge Manager/Acting Project Leader



United States Department of Agriculture

Research, Education, and Economics
Agricultural Research Service

12/30/2020

US Bureau of Reclamation, Lower Colorado Basin
Phoenix Area Office, Program Development Division
6150 W Thunderbird Rd, Glendale, AZ 85306

Dear Sirs/Madams,

I am a Research Hydraulic Engineer and Scientist with the USDA-Agricultural Research Service Southwest Watershed Research Center in Tucson, Arizona where I study landscape scale hydrologic and geomorphic processes. During the past few decades I have had the opportunity to conduct applied erosion control and soil conservation research in cooperation and collaboration with watershed groups throughout southern Arizona, recently with the Aravaipa Watershed Conservation Alliance (AWCA).

I am writing in support of a grant proposal being submitted by the Aravaipa Watershed Conservation Alliance to the Bureau of Reclamation WaterSmart Cooperative Watershed Management Program, Phase I grant, BOR-DO-21-F003.

Managing watersheds to conserve resources and improve ecological and hydrological processes requires leadership. The AWCA has a strong foundation upon which to build. I fully support the efforts of the AWCA to organize a diverse set of partners and stakeholders and lead the development of a working watershed restoration plan for the Aravaipa watershed. These efforts are critical for sound natural resource decision making that will impact the watershed and its people far into the future.

I look forward to partnering with the Aravaipa Watershed Conservation Alliance as work proceeds to strengthen the group and plan restoration efforts in the Aravaipa Watershed.

Sincerely,

Mary Nichols, Ph.D.

Research Hydraulic Engineer
USDA-ARS Southwest Watershed Research Center
2000 E. Allen Rd.
Tucson, AZ 85719

Southwest Watershed Research Center
2000 E. Allen Rd., Tucson, Arizona 85719
Voice 520.647.9062 Fax 520.670.5550 email mary.nichols@usda.gov
USDA is an Equal Opportunity Employer

Douglas A. Ducey
Governor



Lisa A. Atkins
Commissioner

Arizona State Land Department

1616 West Adams, Phoenix, AZ 85007
(602) 542-4631

December 7, 2020

To Whom it May Concern,

The Arizona State Land Department (ASLD) supports the Aravaipa Watershed Conservation Alliance and the application for grant funding. ASLD shares the goal of the Aravaipa Watershed Conservation Alliance in the preservation of the watershed and the protection of natural resources. ASLD looks forward to working with this group in future endeavors.

Sincerely,

Cody Hatfield
Range Resource Area Manager
Arizona State Land Department



Douglas A. Ducey
Governor

Office of the State Forester
**Arizona Department of Forestry
and Fire Management**



David Tenney
State Forester

December 4, 2020

U.S. Bureau of Reclamation
Financial Assistance Support Section
Mail Code: 84-27814
P.O. Box 25007
Denver, CO 80225

**Subject: Letter of Support for Aravaipa Watershed Conservation Alliance
WaterSMART Cooperative Watershed Management Program (Phase I)**

Dear Financial Assistance Support Section:

I am writing to express my support for the Aravaipa Watershed Conservation Alliance (AWCA) application for the WaterSMART Cooperative Watershed Management Program Phase I grant (BOR-DO-21-F003). The goal of the AWCA is to preserve and sustain the Aravaipa Valley's natural landscapes by means of watershed and rangeland restoration. The AWCA is seeking this grant to develop a watershed management plan for the 320,684 acre watershed.

In developing the watershed management plan, AWCA will seek support and technical assistance from their partners to identify natural resource concerns that need to be addressed. Natural resource concerns in the watershed include wildland fire, soil erosion, encroachment of woody shrubs into grasslands, non-native invasive species, riparian area degradation, and declines in water quality and quantity.

By building on the relationships AWCA has created with partners, AWCA will be able to create a watershed management plan that reflects common goals and addresses multiple natural resource concerns. Please let me know if I can be of further assistance as you consider this application.

Sincerely,

Willie Sommers

Willie Sommers
Invasive Plant Program Coordinator

cc: Cori Dolan, Program Manager
Matthew Jewell, Service Forester

Duty ♦ Respect ♦ Integrity

1110 West Washington Street, Suite 100 ♦ Phoenix, Arizona 85007 ♦ Main: (602) 771-1400 ♦ Fax: (602) 771-1421



December 17, 2020

Aravaipa Watershed Conservation Alliance
36933W Klondyke Rd.
Willcox, Arizona 85643

Re: Bureau of Reclamation WaterSmart Cooperative Watershed Management Program, Phase I Grant

To whom it may concern,

The Arizona Game and Fish Department is in support of the AWCA's grant proposal for the BOR Watersmart Cooperative Watershed Management Program grant.

As the local partner biologist for the Tucson office, I have submitted the project area through the Arizona Game and Fish Environmental Review tool. The work proposed would be beneficial as it will allow all stakeholders to make more informed decisions and plan in a more collaborative effort; as there are many special status species and important areas within the watershed.

We are committed to supporting the Aravaipa Watershed Conservation Alliance (AWCA). The Department hopes to further collaborate with AWCA if the organization received the grant.

Please consider this letter as the Department's support in moving forward with the next step in implementing the work outlined in the proposal.

If you have any questions regarding this support letter, please contact me at 520-388-4471. Thank you for your outstanding cooperation in improving the habitat for wildlife in Arizona.

Sincerely,

A handwritten signature in cursive script that reads "Sarah Gandaria".

Sarah Gandaria

azgfd.gov | 520.628.5376

TUCSON OFFICE: 555 N. GREASEWOOD ROAD, TUCSON AZ 85745

GOVERNOR: DOUGLAS A. DUCEY **COMMISSIONERS:** CHAIRMAN KURT R. DAVIS, PHOENIX | LELAND S. "BILL" BRAKE, ELGIN
JAMES E. GOUGHNOUR, PAYSON | TODD G. GEILER, PRESCOTT | ERIC S. SPARKS, TUCSON **DIRECTOR:** TY E. GRAY **DEPUTY DIRECTOR:** TOM P. FINLEY



Graham County Board of Supervisors

921 Thatcher Blvd
Safford, AZ 85546
Phone: (928) 428-3250
Fax: (928) 428-5951

Paul R. David, Chairman
Danny Smith, Vice Chairman
James A. Palmer, Member

Dustin Welker, County Manager/Clerk

12/30/2020

Matthew D Reichert
Grants Management Specialist
Bureau of Reclamation
Phone 303-445-3865

RE: Letter of Support for a Bureau of Reclamation WaterSmart Cooperative Watershed Management Program Phase I grant

Dear Mr. Reichert and applicable Bureau of Reclamation contacts,

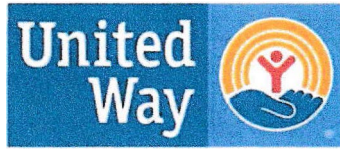
We submit this letter of support for the Aravaipa Watershed Conservation Alliance (AWCA) in their efforts to complete a watershed plan and implementation plan as they work to build a Regional Conservation Partnership program in the Aravaipa watershed area.

In a few short years the AWCA has built a capable organization with broad support from agency partners and landowners in the watershed. This group has proven to be successful in their endeavors to date and this Phase 1 grant will propel their further success in receiving the additional monies to implement projects benefitting the places and people in the watershed and Graham County.

In our relationship, we see the experienced members of the board of the AWCA living in the watershed and dedicated to long range plans to protect and improve the watershed. Your support for the AWCA will be multiplied by their dedication for years to come.

Since el;


Danny Smith
Graham County Board of Supervisors



**United Way of Graham
& Greenlee Counties**

To the Bureau of Reclamation, I am writing a letter of support for the Aravaipa Watershed Conservation Alliance (AWCA). The AWCA has been a very dedicated organization that has been tackling important water management needs in our area. They have done a great job organizing volunteers and partnering with local agencies to accomplish their work. This grant would help them tremendously with their goals. As the local United Way, we have supported them on numerous occasions and have been extremely pleased with the results and how they have managed their budget. The challenges the AWCA face is their location. There are very few businesses to pull funds from and they must rely heavily on the support of locals to keep them sustainable. If the AWCA were to receive this grant I know they would be able to make a tremendous impact in the water management of the area which would benefit the community greatly. The President of the organization, Matthew Magoffin, is the perfect leader for this organization and has already started to find new innovative ways to improve the organization. I am excited to see all the progress the AWCA will be accomplishing. This grant would greatly expedite the progress. Please find this letter of support from the United Way of Graham and Greenlee Counties. If you have any questions or would like to see our progress report of the AWCA please let me know. Thank you for your consideration, Adam O'Doherty

Adam O'Doherty

CEO

United Way of Graham and Greenlee Counties

A handwritten signature in blue ink that reads "Adam O'Doherty".



SAVING THE LAST GREAT PLACES ON EARTH

December 7, 2020

To Whom It May Concern:

Re: BOR Funding Opportunity BOR-DO-21-F003
WaterSmart Cooperative Watershed Management Program Phase I Grant
US Department of Interior (USDOI) Bureau of Reclamation

The Nature Conservancy is an active partner and supporter of the Aravaipa Watershed Conservation Alliance. The Nature Conservancy owns 9000 acres in and around Aravaipa Canyon, as well as 6 miles of Aravaipa Creek above the Aravaipa Canyon Wilderness. We strive to manage all of our property as diverse natural habitat, for the benefit of wildlife and people. Aravaipa Creek supports the state's best native fishery, including two endangered species, and Aravaipa Canyon is well known as a wilderness hiking destination.

Watershed health, and proper functioning condition of the floodplain, are extremely important to the long-term viability of Aravaipa Creek. We believe the WaterSmart Cooperative Watershed Management Program (CWMP) would increase the capacity and effectiveness of the AWCA in fulfilling their mission and vision for the future of the Aravaipa Valley.

As we plan for an uncertain future, with the challenges of drought and population growth putting similar pressures on both ranching and wildlife, it is important that we work together where interests are similar. Both ranching and wildlife require open space, high quality forage, and water. By working together, on common goals, watershed groups such as the Aravaipa Watershed Conservation Alliance will be in better position to preserve the economic viability ranching, while maintaining a high quality environment for wildlife and people.

We hope that the Aravaipa Watershed Conservation Alliance receives full funding, and look forward to working with the group in the future.

Sincerely,

Bob Rogers
Director of Stewardship
The Nature Conservancy of Arizona
1510 E Ft Lowell Rd
Tucson, Az. 86719



Freeport-McMoRan
Safford Operations
8500 N. Freeport-McMoRan Road
Safford, AZ 85546

Sean Wenham
Community Development Manager
Tel (928)792-5937
swenham@fmi.com

January 4, 2021

Bureau of Reclamation
WaterSMART Cooperative Watershed Management Program
P.O. Box 25007, MS 84-27814
Denver, CO 80225

RE: Letter of support for Aravaipa Watershed Conservation Alliance proposal – WaterSMART Cooperative Watershed Management Program, Phase I grant (BOR-DO-21-F003)

To Whom It May Concern:

Freeport-McMoRan Safford Operations is a partner to and supporter of the Aravaipa Watershed Conservation Alliance (AWCA.) Our role in the watershed is as a local and county-level philanthropic resource, convener and facilitator for community nonprofit capacity improvement, nonprofit technical assistance support and collaborative community partner to AWCA.

We believe the WaterSMART Cooperative Watershed Management Program (CWMP) would increase the capacity and effectiveness of the AWCA in fulfilling their mission and vision for the future of the Aravaipa Valley and watershed.

As an active partner, we support this application for funding from the Bureau of Reclamation through the WaterSMART CWMP. We are committed to participating in the planning process and providing insight and expertise where our mission and scope align with the AWCA's goals and objectives.

Please do not hesitate to contact me with any additional questions or concerns.

Sincerely,

A handwritten signature in black ink, appearing to read 'SWenham', written over a light blue horizontal line.

Sean Wenham
Community Development Manager
Freeport-McMoRan Safford Operations

Board Administrator Salary

Percentile	Salary	Location
25th Percentile Board Administrator Salary	\$69,397	US
50th Percentile Board Administrator Salary	\$90,111	US
75th Percentile Board Administrator Salary	\$111,281	US
90th Percentile Board Administrator Salary	\$131,556	US

1 more row

[www.salary.com](#) › [research](#) › [salary](#) › [benchmark](#) › [board...](#)

Board Administrator Salary | Salary.com

ZipRecruiter

Search job title or keyword

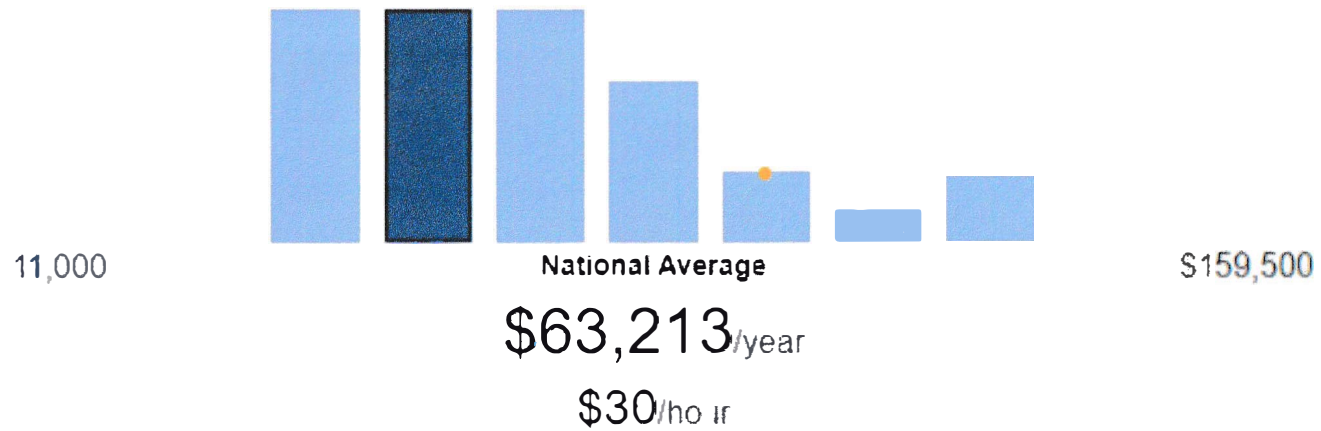
City, state or zip

FREELANCE WRITER

Career Path

Salary

Jobs



Freelance Writer Salary Comparison by Location

nationwide
United States

\$63,213

Willcox, AZ
Arizona

\$61,481

Average catering cost per person

The price is typically quoted per person, so the first step in working with a caterer is to determine the number of guests at your event. Price differences occur based on the style of service. While a buffet or family-style meal may cost \$25 per person, a formal plated meal could cost \$145 per person. So in this example, the average cost of catering for 50 guests can range between \$1,250 and \$7,250.

When more staff is required for service, the cost will reflect that increase. Here are a few examples of how pricing varies by service for a Thumbtack caterer, Red Dot Cuisine.

Catering service	Cost per person
Formal dinner	\$145 per person
Informal food stations	\$25 - \$45 per person
Buffet	\$23 per person
Corporate event	\$70 per person



Meals & Incidentals (M&IE) Breakdown ⁱ

Use this table to find the following information for Federal employee travel:

M&IE Total - the full daily amount received for a single calendar day of travel when that day is neither the first nor last day of travel.

Breakfast, lunch, dinner, incidentals - Separate amounts for meals and incidentals. $M\&IE\ Total = Breakfast + Lunch + Dinner + Incidentals$. Sometimes meal amount must be deducted from trip voucher. See [More Information](#)

First & last day of travel - amount received on the first and last day of travel and equals 75% of total M&IE.

Filter Results...

Primary Destination ⁱ	County ⁱ	M&IE Total	Continental Breakfast/Breakfast	Lunch	Dinner	Incidental Expenses	First & Last Day of Travel ⁱ
Tucson	Pima	61	\$14	16	\$26	\$5	\$15.75

1 2 3 4 5 6 7 8 9 10 11 12 13 14 15 16 17 18 19 20 21 22 23 24 25 26 27 28 29 30 31 32 33 34 35 36 37 38 39 40 41 42 43 44 45 46 47 48 49 50 51 52 53 54 55 56 57 58 59 60 61 62 63 64 65 66 67 68 69 70 71 72 73 74 75 76 77 78 79 80 81 82 83 84 85 86 87 88 89 90 91 92 93 94 95 96 97 98 99 100



Buying & Selling ▾

Real Estate ▾

Policy & Regulations ▾

Small Business ▾

Travel ▾

Shared Services ▾

Technol

Home / Travel / Plan & Book / Per Diem Rates / Per Diem Lookup



Lodging by month (excluding taxes) | October 2020 - September 2021

Cities not appearing below may be located within a county for which rates are limited. To determine what county a city is located in, visit the [National Association of Counties \(NACo\) website \(a non-federal website\)](#).

Primary Destination	County	2020 Oct	Nov	Dec	2021 Jan	Feb	Mar	Apr	May
Tucson	Pima	\$96	\$96	\$96	\$133	\$133	\$133	\$96	\$96