

Kristin “Alligator” Nelson’s 2022 Solution to the:

# USA Water Solution



Kristin Nelson

(480)228-3800

KristinNelson@HSmove.com

# Major Rivers in USA

## Alligator's WATER Ideas

1. Build a system Canal/Pipeline
2. Turn Missouri into Reverse Platte to Colorado
3. Little Missouri & Snake Rivers



# 1.

# Turn Missouri WEST

Turn 2/3 of  
Missouri River  
to the WEST

**Ideas** to SEND it WEST:

REVERSE Platte Rivers

Turn the Missouri above or below Omaha into North Platte River. Sheer force of Missouri will do most of the initial work.

**SAME water, fish, and plant life in both rivers.**



Kristin Nelson's 2022 Solution to the:

# 1. Turn MISSOURI to PLATTE to COLORADO

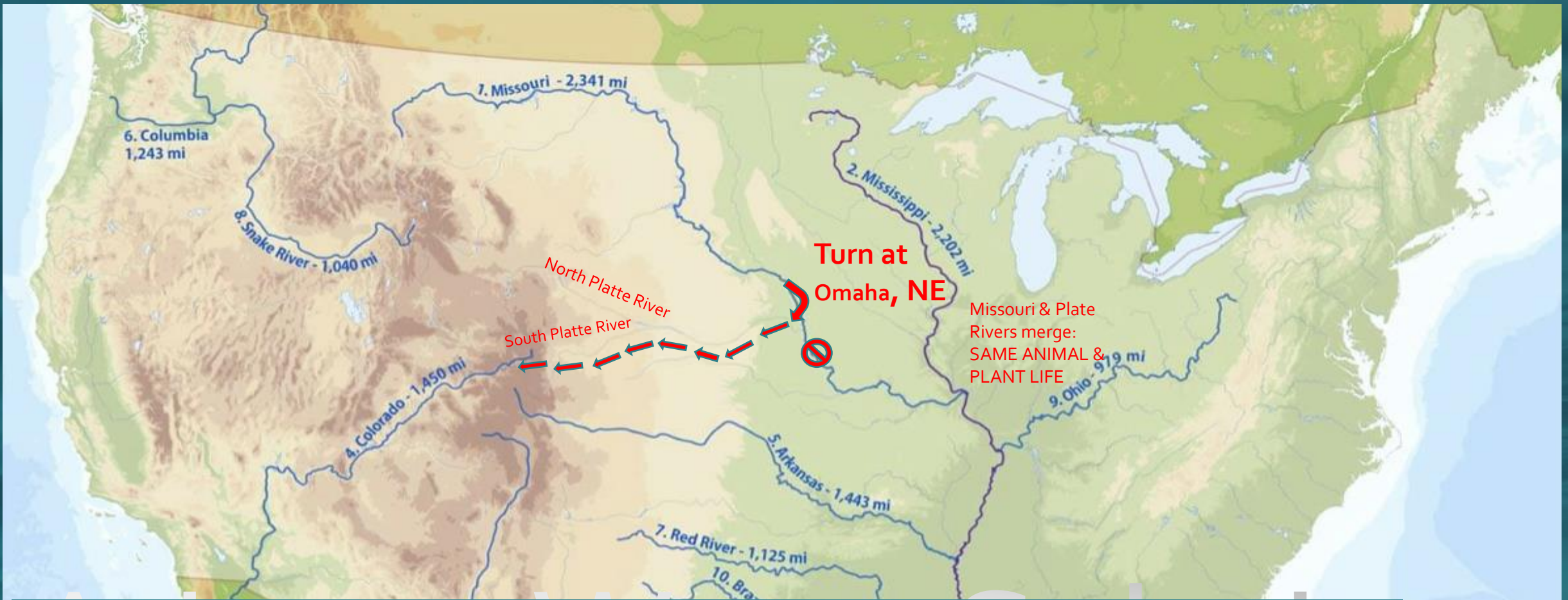
TURN Missouri River at Omaha

into North Platte River

into South Platte River

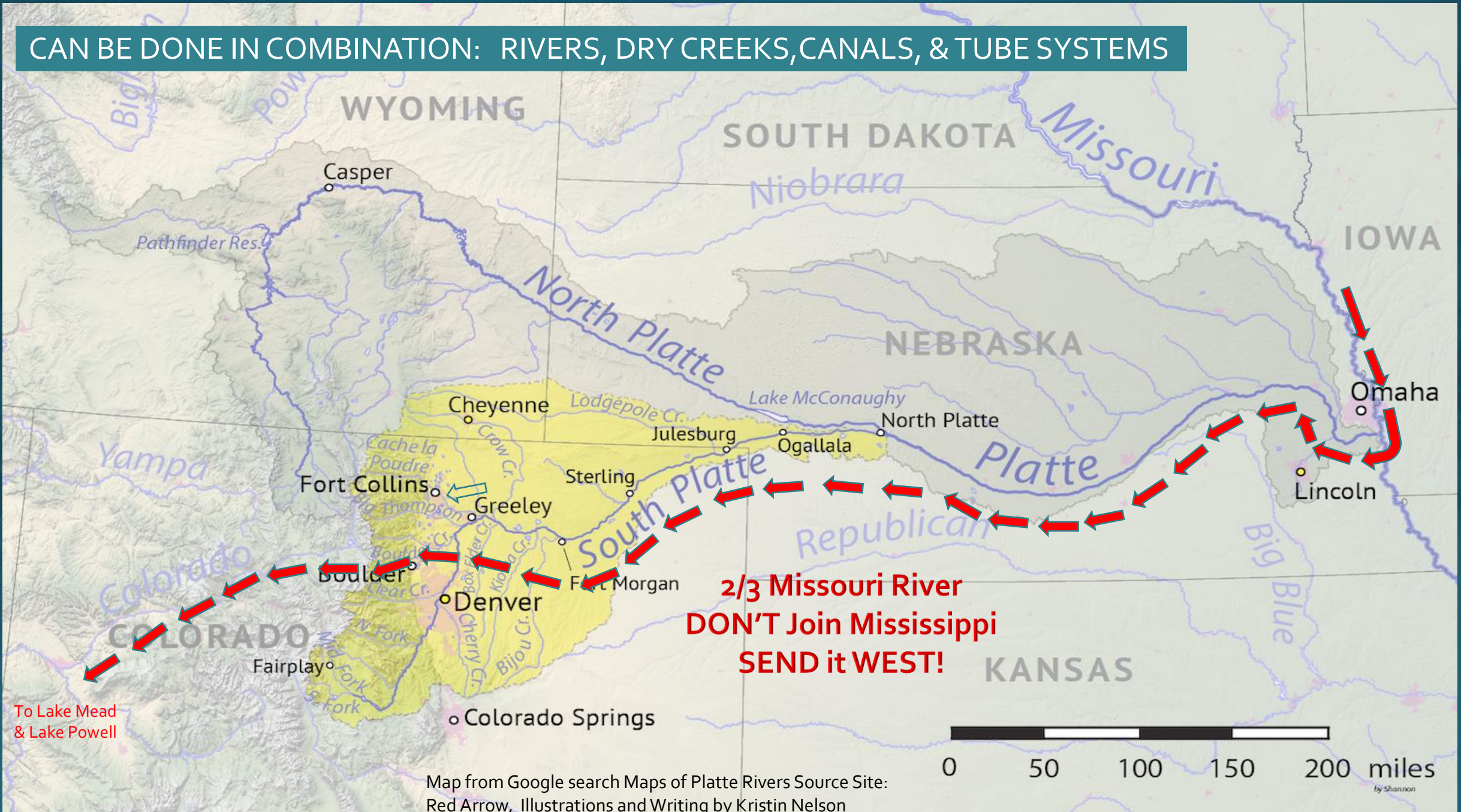
into the Colorado River

or build a CANAL there



# Missouri River Turns WEST at Omaha via North & South Platte Rivers to fill Lake Mead & Powell

CAN BE DONE IN COMBINATION: RIVERS, DRY CREEKS, CANALS, & TUBE SYSTEMS



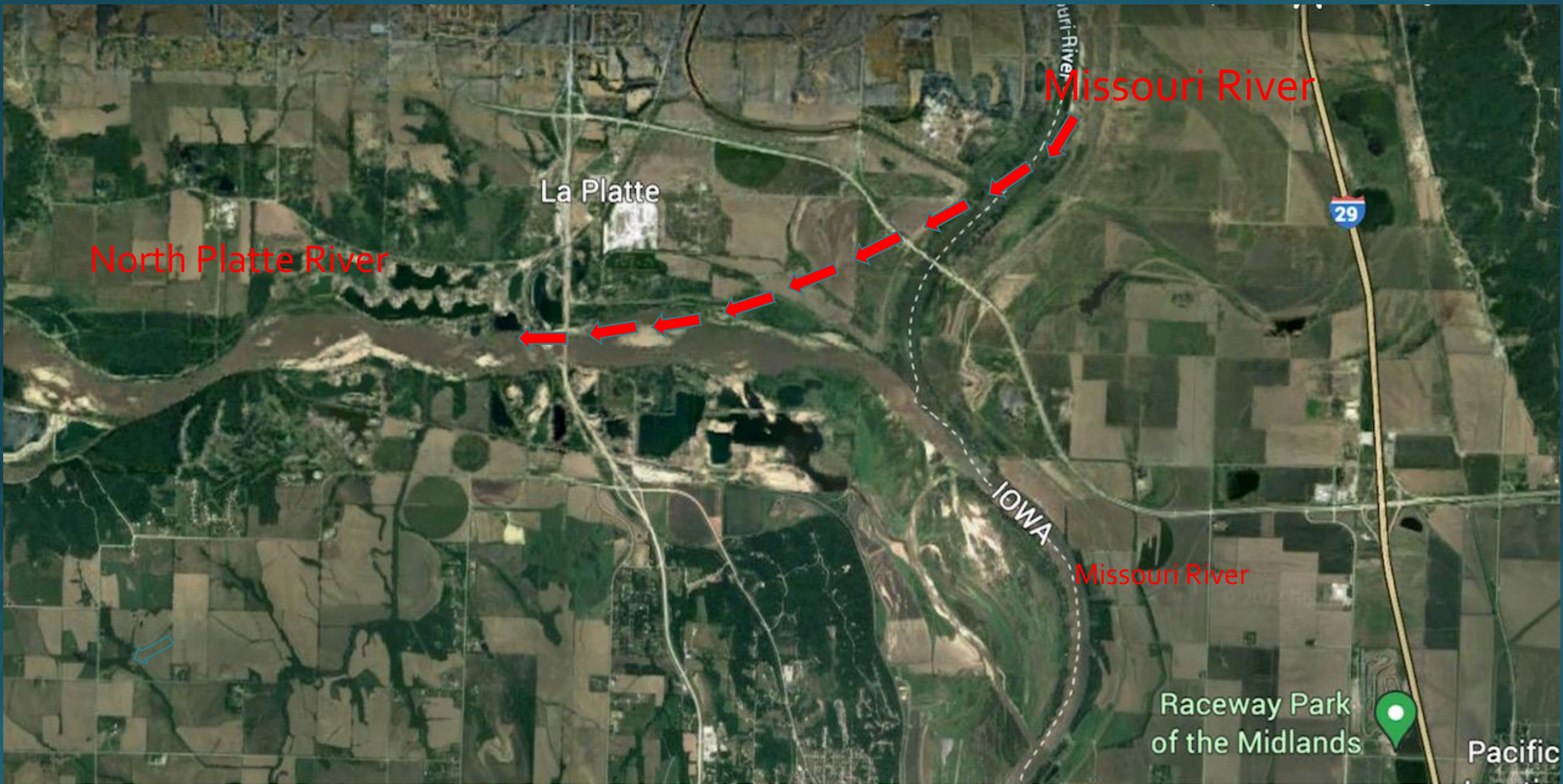
**2/3 Missouri River  
DON'T Join Mississippi  
SEND it WEST!**

To Lake Mead & Lake Powell

Map from Google search Maps of Platte Rivers Source Site:  
Red Arrow, Illustrations and Writing by Kristin Nelson

by Shannon





Google

Google Earth screen photo from Google  
Red arrows, illustrations, and writing done for presentation by Kristin Nelson

(41°03'20"N 95°53'22"W) 11 m





Google

Google Earth screen photo from Google  
Red arrows, illustrations, and writing done for presentation by Kristin Nelson

(41°03'27"N 95°53'07"W) 3 m

# 2.

# Canal & Pipelines

**Ideas** to SEND it WEST:

Build a system of  
**Canals and Pipelines**

Land is basically FARM or Dry Salt Creeks in this area outline.

Move via Wind Turbines & Solar energy



Kristin Nelson's 2022 Solution to the:

## 2. Canal & Pipeline Systems

Build another CANAL system starting  
On border of Kentucky OHIO River joins  
Mississippi River.

HUDSON feeds GREAT LAKES



Kristin Nelson's 2022 Solution

# Canal Water Solution



Alaskan Pipeline Photo

Kristin Nelson's 2022

# Pipelines Solution

# Do TOO MANY rivers flow into the Mississippi?

- 2,350 miles to journey south to the Gulf of Mexico
- Mississippi River is joined by **hundreds of tributaries** including the Ohio and Missouri Rivers.
- Water from 31 states drains into the Mississippi

**SEND it WEST to WATER MORE CROPS & TREES  
IN NEBRASKA, KANSAS, OKLAHOMA, & TEXAS!**

# 3.

# Little Missouri & Snake Rivers

**Ideas** to SEND it SOUTH:

Little Missouri and Snake River

MORE NORTHERN WATER – LESS DAM HOLDS.



# Little Missouri to Colorado

Kristin Nelson's 2022 Solution







© www.freeworldmaps.net

Save th  
Fresh Wa

# 4.

# More options ...Sept. 1<sup>st</sup> deadline

More time needed:

**Goff Creek** in

Oklahoma to run CANAL  
IT'S A DRY SALT BED  
NEAR BEAVER RIVER.

OHIO River to ARKANSAS  
River

**SAVE FRESH  
WATER**





Many OPTIONS to do this.  
Sept. 1<sup>st</sup> Deadline is why I am not more complete.  
Please consider these ideas