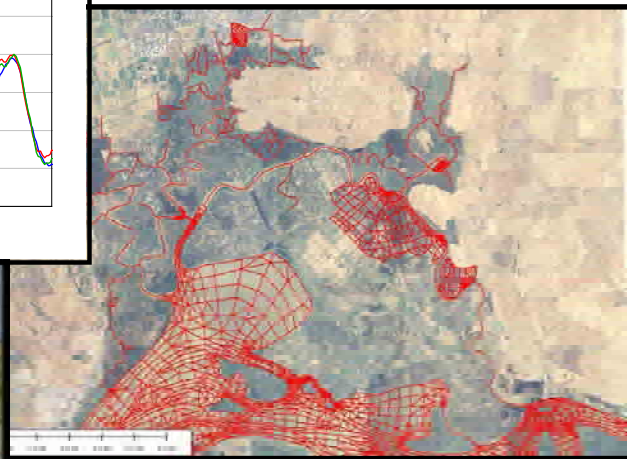
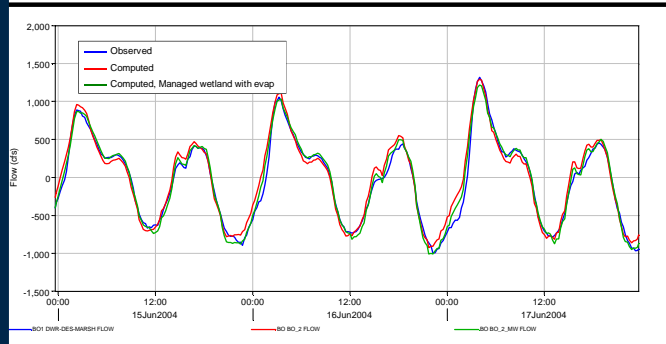


Appendix A
**Numerical Modeling
in Support of Suisun Marsh PEIR/EIS—
Technical Appendix, September 2009**

NUMERICAL MODELING IN SUPPORT OF SUISUN MARSH PEIR/EIS

TECHNICAL APPENDIX, SEPTEMBER 2009



Prepared For:
Jones and Stokes Associates
2841 Junction Ave, Suite 114
San Jose, CA 95134

Contact:
Kevin MacKay
Project Manager
408-434-2244

Prepared By:
Resource Management Associates
4171 Suisun Valley Road, Suite J
Fairfield, CA 94534

Contact:
John DeGeorge
707-864-2950

Table of Contents

- 1. Executive Summary 1
 - 1.1. Background 1
 - 1.2. Report Summary 1
 - 1.3. Summary of the Calibration 1
 - 1.4. Summary of the Modeling Results 2
- 2. RMA Suisun Marsh Modeling 5
 - 2.1. Introduction 5
 - 2.2. Background 5
 - 2.3. General Description of Model Capabilities 8
- 3. Model Set-up 8
 - 3.1. Model Geometry 9
 - 3.2. Network Refinement 9
 - 3.3. Boundary Conditions 12
 - 3.3.1. Simulation periods 12
 - 3.3.2. Tidal boundary 12
 - 3.3.3. Flows, exports, precipitation, evaporation, DICU 12
 - 3.3.4. Electrical Conductivity (EC) 14
 - 3.3.5. Suisun Marsh Slough Salinity Control Gate operation 14
 - 3.3.6. Precipitation and evaporation by element type 14
- 4. Model Calibration 29
 - 4.1. Hydrodynamics Calibration 29
 - 4.1.1. Refining Suisun Marsh sloughs 30
 - 4.1.2. Incorporating managed wetlands 31
 - 4.1.3. Results of the hydrodynamic calibration 32
 - 4.2. Electrical Conductivity (EC) Calibration 47
 - 4.2.1. Background 47
 - 4.2.2. Results 47
 - 4.2.3. Summary 48
 - 4.3. Summary of Unresolved Calibration Issues 62
- 5. Tidal Restoration Scenario Simulations 62
 - 5.1. Boundary Conditions 62
 - 5.2. Simulation Period 63
 - 5.3. Mesh 63
 - 5.3.1. Base 63
 - 5.3.2. Set 2 and Zone 1 63
 - 5.3.3. Set 1 and Zone 4 63
 - 5.4. Stage Results 67
 - 5.4.1. Background 67
 - 5.4.2. Results 67
 - 5.5. Tidal Prism Results 72
 - 5.5.1. General observations 72
 - 5.5.2. Central Marsh 72
 - 5.5.3. North Interior Marsh 73

- 5.5.4. Western Interior Marsh 73
- 5.5.5. Comparison of flood flow for the scenarios 73
- 5.6. EC Results 81
 - 5.6.1. Martinez to Collinsville 81
 - 5.6.2. Suisun Marsh 81
 - 5.6.3. Delta 83
- 5.7. Velocity Results – Scour Potential 109
 - 5.7.1. Background 109
 - 5.7.2. Scouring potential for the scenarios 109
 - 5.7.3. Summary 110
- 6. Discussion/Summary/Conclusions 128
- 7. References 131

Table of Figures

Figure 1-1 Regions flooded as tidal marsh in each of the scenarios, with the location of breaches in levees indicated by stars. 4

Figure 2-1 RMA Bay-Delta model finite element mesh..... 7

Figure 3-1 Comparison between old and new grid details in the Suisun Marsh Area..... 10

Figure 3-2 Base case Suisun Marsh finite element network..... 11

Figure 3-3 Example of computed and observed stage at Martinez..... 15

Figure 3-4 Model grid showing inflow and export locations, and flow control structures. 16

Figure 3-5 Net Delta outflow and major boundary flows for the 2002-2003 EC calibration/scenario simulation period..... 17

Figure 3-6 Minor boundary flows for the 2002-2003 EC calibration/scenario simulation period. 18

Figure 3-7 Suisun Marsh local creek flows for the 2002-2003 EC calibration/scenario simulation period. 19

Figure 3-8 Historical exports and diversions used in the model for the 2002-2003 EC calibration/scenario simulation period. Note that daily averaged SWP exports are plotted, however the model uses 15-minute inputs..... 20

Figure 3-9 Major boundary flows for the 2004 hydrodynamic calibration period. 21

Figure 3-10 Minor boundary flows for the 2004 hydrodynamic calibration period..... 22

Figure 3-11 Historical exports and diversions used in the model for the 2004 hydrodynamic calibration period. Note that daily averaged SWP exports are plotted, however the model uses 15-minute inputs..... 24

Figure 3-12 Inflow/export locations in Suisun Marsh. 25

Figure 3-13 Daily EC time series used as boundary conditions for the Sacramento River and Yolo Bypass (upper) and for the San Joaquin River (lower) for the 2002-2003 EC calibration/scenario simulation period..... 27

Figure 3-14 Aerial view of the Suisun Marsh Salinity Control Gates..... 28

Figure 3-15 Operational schedule for the SMSCG during the 2002-2003 EC calibration/scenario simulation period..... 28

Figure 3-16 Operational schedule for the SMSCG during the 2004 hydrodynamic calibration period. 29

Figure 4-1 Locations of stations in Suisun Marsh used for flow and EC calibration. The white boxed labels indicate special continuous monitoring stations implemented during spring 2004..... 34

Figure 4-2 Suisun Marsh LiDAR data used in the model calibration – elevations shown in the color scale are in feet (NGVD29). 35

Figure 4-3 Observed and computed flow and stage data in Boynton Slough with two iterations of flow results showing how addition of tidal marsh affects computed flows. 36

Figure 4-4 Observed and computed tidally averaged flow in Boynton Slough (B01) and Hill Slough (HS1), and observed stage at Hill Slough (S-4). 37

Figure 4-5 Observed and computed tidally averaged flow for Boynton Slough. The red line is the flow for a modeled system with an adjacent managed wetland connected by open culverts to Boynton Slough..... 38

Figure 4-6 Observed and computed flow for Boynton Slough. The red line is the flow for a modeled system with an adjacent managed wetland connected by open culverts to Boynton Slough. 39

Figure 4-7 Observed tidally averaged flow for the east side Montezuma Slough stations M04 and M03, and the Observed Stage at S71 and S72..... 40

Figure 4-8 Observed and computed stage at monitoring station S-4 in Hill Slough during April – May 2004 (shorter time period shown in lower plot)..... 41

Figure 4-9 Observed and computed flow at Hill Slough, station HS1 during May 2004 (shorter time period shown in lower plot)..... 41

Figure 4-10 Observed and computed stage at monitoring station S-49 at Beldon’s Landing on Montezuma Slough during April – May 2004 (shorter time period shown in lower plot)..... 42

Figure 4-11 Observed and computed stage at monitoring station S-64 at National Steel on Montezuma Slough April – May 2004 (shorter time period shown in lower plot). 42

Figure 4-12 Observed and computed flow at the Nurse Slough monitoring station, NS1 May 2004 (shorter time period shown in lower plot). 43

Figure 4-13 Observed and computed flow at the Cutoff Slough monitoring station, CO2 during June 2004..... 43

Figure 4-14 Observed and computed flow in First Mallard Slough at station FM1 during June 2004. 44

Figure 4-15 Observed and computed flow in Montezuma Slough at station MO1 during May 2004 (shorter time period in lower plot) – positive values indicate flow is eastward. 44

Figure 4-16 Observed and computed flow in Montezuma Slough at monitoring locations MO2 and MO3 – positive values indicate flow is eastward. 45

Figure 4-17 Observed and computed flow in Montezuma Slough at monitoring location MO4 (shorter time period shown in lower plot) – positive values indicate flow is eastward. 45

Figure 4-18 Observed and computed flow at the mouth of Suisun Slough, station SS1 (shorter time period shown in lower plot)..... 46

Figure 4-19 Observed and computed flow through Hunter Cut at monitoring station HC1 (shorter time period shown in lower plot)..... 46

Figure 4-20 Locations of monitoring stations used in EC model calibration. 49

Figure 4-21 Top/bottom EC and stage at Martinez (RSAC054), and Sacramento River flow during a high outflow, neap tide period..... 50

Figure 4-22 Top/bottom EC and stage at Martinez (RSAC054), and Sacramento River flow during a lower outflow period, neap tide period. 51

Figure 4-23 Tidally averaged measured (average of top and bottom) and computed EC at Martinez station (RSAC054). 52

Figure 4-24 Tidally averaged observed and computed EC at S-49, Montezuma Slough at Beldon’s Landing. Computed shown with and without duck club withdrawals and evaporation..... 53

Figure 4-25 Tidally averaged observed and computed EC at station S-49, Beldon’s Landing. 53

Figure 4-26 Tidally averaged observed and computed EC at station S-64, National Steel in eastern Montezuma Slough..... 54

Figure 4-27 Tidally averaged observed and computed EC at station S-71 Roaring River in eastern Montezuma Slough..... 54

Figure 4-28 Tidally averaged observed and computed EC at station S-54, Hunter Cut... 55

Figure 4-29 Tidally averaged observed and computed EC at Collinsville (RSAC081)... 56

Figure 4-30 Observed and computed EC at Collinsville (RSAC081) during a period of SMSCG operation..... 56

Figure 4-31 Tidally averaged observed and computed EC at station S-4, Hill Slough... 57

Figure 4-32 Tidally averaged observed and computed EC at station S-4, Hill Slough in December, 2002. Computed results shown with and without local creek flow addition. 57

Figure 4-33 Tidally averaged observed and computed EC at station S-42, Volanti..... 58

Figure 4-34 Tidally averaged observed and computed EC at station S-42, Volanti in December, 2002. Computed results shown with and without local creek flow addition. 58

Figure 4-35 Tidally averaged observed and computed EC at station S-97, in Cordelia Slough at Ibis. 59

Figure 4-36 Tidally averaged observed and computed EC at station S-97, in Cordelia Slough at Ibis December, 2002. Computed results shown with and without local creek flow addition. 59

Figure 4-37 Tidally averaged observed and computed EC at station A-96 on Goodyear Slough at Fleet. 60

Figure 4-38 Tidally averaged observed and computed EC at station S-37 in Suisun Slough at Godfather. 60

Figure 4-39 Tidally averaged observed and computed EC at station S-35 at Morrow Island..... 61

Figure 4-40 Intertidal observed and computed EC at station S-35 at Morrow Island. 61

Figure 5-1 Base case grid in Suisun Marsh. 64

Figure 5-2 Bottom elevation for the Base case grid. 64

Figure 5-3 Set 2 grid in Suisun Marsh..... 65

Figure 5-4 Bottom elevation for the Set 2 grid..... 65

Figure 5-5 Set 1 grid in Suisun Marsh..... 66

Figure 5-6 Bottom elevation for the Set 1 grid..... 66

Figure 5-7 Stage time series showing stage shifts at Collinsville monitoring station C-2 and National Steel monitoring location S-64 for Base and Set 1 Scenarios..... 68

Figure 5-8 Stage time series at monitoring station S-49 at Beldon’s Landing when Duck Clubs in the Suisun Marsh region are filling in the fall..... 68

Figure 5-9 Color contour plots of Base case (upper) and Set 1 (lower) MHHW elevations for April (left) and October (right) 2003..... 69

Figure 5-10 Color contour plots of Base case (upper) and Set 1 (lower) MLLW elevations for April (left) and October (right) 2003..... 70

Figure 5-11 Color contour plots of Base case (upper) and Set 2 (lower) MHHW (left) and MLLW (right) elevations for April 2003 (note scale differences for MHHW and MLLW). 71

Figure 5-12 Locations where tidal flow was calculated (Base case grid)..... 74

Figure 5-13 Average modeled tidal flow in the larger sloughs in central Suisun Marsh. 75

Figure 5-14 Average modeled tidal flow in the smaller sloughs in the northern interior region of Suisun Marsh. 76

Figure 5-15 Average modeled tidal flow in the sloughs west and north of the Zone 1 area. 77

Figure 5-16 Average modeled tidal flow in Goodyear Slough..... 78

Figure 5-17 Red arrows illustrate flow magnitude (cfs) near peak flood tide (July 11, 2003 22:00) for Base case in comparison with Set 2. Color Scale is water surface elevation..... 79

Figure 5-18 Red arrows illustrate flow magnitude (cfs) near peak flood tide (July 11, 2003 22:00) for Base case in comparison with Set 1. Color Scale is water surface elevation..... 80

Figure 5-19 Tidally averaged computed EC at Martinez..... 84

Figure 5-20 Tidally averaged computed EC at Chippis..... 84

Figure 5-21 Tidally averaged observed and computed EC at Collinsville. 85

Figure 5-22 Tidally averaged computed EC at Beldon’s Landing at monitoring station S-49 in Montezuma Slough. 85

Figure 5-23 Tidally averaged computed EC at station S-40 on Boynton Slough..... 86

Figure 5-24 Tidally averaged computed EC at station S-97 on Ibis Slough. 86

Figure 5-25 Tidally averaged computed EC at station S-21 in Sunrise Slough. 87

Figure 5-26 Tidally averaged computed EC at station S-35 at Morrow Island. 87

Figure 5-27 Tidally averaged computed EC at station S-42 on Volanti Slough. 88

Figure 5-28 Tidally averaged observed and computed EC at station S-37 on Godfather Slough. 88

Figure 5-29 Tidally averaged observed and computed EC at station S-33 on Cygnus Slough..... 89

Figure 5-30 Tidally averaged observed and computed EC at station S-54 on Hunter Cut. 89

Figure 5-31 Tidally averaged observed and computed EC at station S-4 on Hill Slough. 90

Figure 5-32 Tidally averaged observed and computed EC at station NS-1 on Nurse Slough..... 90

Figure 5-33 Tidally averaged computed EC at the S-64 monitoring location near National Steel on Montezuma Slough. 91

Figure 5-34 Tidally averaged computed EC at the S-71 monitoring location at Roaring River on Montezuma Slough. 91

Figure 5-35 Tidally averaged computed EC time series at Jersey Point. 92

5-36 Tidally averaged computed EC time series at Old River at Rock Slough..... 92

5-37 Tidally averaged computed EC time series at the CCWD Victoria Canal export location for Los Vaqueros..... 93

Figure 5-38 Tidally averaged computed EC time series at the CVP export location. 93

Figure 5-39 Tidally averaged computed EC time series at the SWP export location..... 94

Figure 5-40 Color contour plots of EC for the Base case (left) and Zone 4 scenario (right) at the same timing on a flood tide (upper) and ebb tide (lower)..... 95

Figure 5-41 Set 2 EC % change from Base case – August 1, 2002..... 96

Figure 5-42 Set 2 EC % change from Base case – September 1, 2002. 97

Figure 5-43 Set 2 EC % change from Base case – October 1, 2002..... 98

Figure 5-44 Set 2 EC % change from Base case – September 1, 2003. 99

Figure 5-45 Set 2 EC % change from Base case – October 1, 2003..... 100

Figure 5-46 Set 2 EC % change from Base case – November 1, 2003..... 101

Figure 5-47 Zone 1 EC % change from Base case – September 1, 2002. 102

Figure 5-48 Set 1 EC % change from Base case – August 1, 2002..... 103

Figure 5-49 Set 1 EC % change from Base case – September 1, 2002. 104

Figure 5-50 Set 1 EC % change from Base case – October 1, 2002..... 105

Figure 5-51 Set 1 EC % change from Base case – September 1, 2003. 106

Figure 5-52 Set 1 EC % change from Base case – October 1, 2003..... 107

Figure 5-53 Set 1 EC % change from Base case – November 1, 2003..... 108

Figure 5-54 Location names for the areas examined for scouring potential..... 112

Figure 5-55 Velocity distributions for the five scenarios at Beldon’s Landing, July 2002.
..... 113

Figure 5-56 Color contour plots of velocity for Base case and Zone 1 at Hunter Cut in
July 2002. Points analyzed: Point 1 on bank Point 2 mid-channel..... 114

Figure 5-57 Hunter Cut velocity at Point 1 for Sets 1 and 2 in comparison with the Base
case..... 115

Figure 5-58 Velocity distributions for points 1 (bank) and 2 (mid-channel) at Hunter Cut.
..... 116

Figure 5-59 Color contour plots of velocity for Base case and Zone 1 near Morrow Island
on July 12, 2002 14:00. Points analyzed: channel (Point 1) and bank (Point 2). 117

Figure 5-60 Morrow Island velocity at Point 1 for Sets 1 and 2 in comparison with the
Base case..... 118

Figure 5-61 Velocity distributions for points analyzed near Morrow Island: point 1
(channel) and point 2 (bank)..... 119

Figure 5-62 Color contour plots of velocity for Base case and Zone 4 near Meins Landing
on July 17, 2002 1915. Points analyzed: points 1 and 3 (bank) and point 2 (mid-channel).
..... 120

Figure 5-63 Meins Landing velocity at Point 2 for Set 1 and Zone 4 in comparison with
the Base case..... 121

Figure 5-64 Meins Landing velocity at Point 2 for Set 2 and Zone 1 in comparison with
the Base case..... 121

Figure 5-65 Velocity distributions for Point 3 (bank) analyzed near Meins Landing.... 122

Figure 5-66 (Above) Color contour plot of Set 2 velocity near Cross Slough on July 19,
2002 23:15. (Below) Velocity distributions in Cross Slough. Points analyzed: points 1
and 2 mid-channel..... 123

Figure 5-67 Cross Slough velocity at Point 1 for Set 1 and Set 2 in comparison with the
Base case..... 124

Figure 5-68 Color contour plots of velocity for the Base case and set 1 scenario on July
11, 2002 04:45 (note scale differences on contour plots). Points analyzed near the Duck
Club location are indicated. 125

Figure 5-69 Velocity distributions for points analyzed near the Duck Club location.
Lower plot shows velocity distributions for Set 1 at six points..... 126

Figure 5-70 Velocity time series for points A - D analyzed near the Duck Club location.
..... 127

Figure 5-71 Velocity time series for points E and F analyzed near the Duck Club location.
..... 127

List of Tables

Table 3-1 Summary of monthly DICU flows ($\text{ft}^3 \text{sec}^{-1}$) for the calibration and scenario simulation periods. Negative values indicate Delta withdrawal.	23
Table 3-2 EC boundary conditions for the EC calibration, Base case and scenarios simulations.	26
Table 5-1 Flow magnitude (cfs) at four locations near peak flood tide (July 11, 2003 22:00).	73

1. Executive Summary

1.1. Background

Resource Management Associates, Inc. (RMA) has developed a numerical model of the Suisun Marsh area to simulate the current hydrodynamics and salinity of the marsh as well as the changes to this regime under a set of four marsh restoration scenarios. RMA refined the representation of the Suisun Marsh area in their current numerical model of the San Francisco Bay and Sacramento-San Joaquin Delta system (Bay-Delta model). The computer programs used in the Bay-Delta model, RMA2 (King 1990) and RMA11 (King 1998), utilize a finite element formulation to simulate the one- and two-dimensional flow and water quality transport¹, respectively, in streams and estuaries. The Bay-Delta model, which uses electrical conductivity² (EC) as a surrogate for salinity, has been successively updated, refined and recalibrated in numerous studies over the past 11 years, for example, to evaluate the water quality responses of treated wastewater discharges, and the potential effects of various Suisun Marsh levee breach scenarios.

1.2. Report Summary

This Technical Summary of the Suisun Marsh Modeling Project describes:

- the refined Bay-Delta model;
- the calibration of this representation;
- the further development of the model to represent four representative marsh restoration scenarios; and
- analysis of the modeling results of these scenarios to evaluate their effects on tidal range, scour velocities, and tidal prism in Suisun Marsh, and on salinity in Suisun Marsh and the Delta in comparison with simulated Base case conditions.

1.3. Summary of the Calibration

RMA's Bay-Delta model was refined in the Suisun Marsh area, with increased detail to represent off-channel storage in overbank/fringe marsh regions, a better representation of precipitation and evaporation, estimation of local creek flows, inflows and withdrawals within the Suisun Marsh, plus an overall refinement of the mesh. These additions generally improved the representation of tidal dynamics and EC in Suisun Marsh. A recent Delta calibration effort (RMA, 2005) was used as the starting point for the current effort. There was no recalibration in the Delta, as the focus was on improving the representation of Suisun Marsh.

Hydrodynamic calibration of the refined model took place in the period April – July, 2004 to take advantage of new LiDAR elevation data and data from new flow and stage measurement stations in the Suisun Marsh area (DWR 2007). Stage calibration was generally good in Suisun Marsh. The results of the flow calibration were mixed. Flows in

¹ RMA11 can also be used to simulate three-dimensional transport in conjunction with other RMA model formulations, for both conservative and non-conservative constituents.

² EC measurements give an estimate of the amount of total dissolved solids in the water; units are typically given in $\mu\text{mhos cm}^{-1}$ or, equivalently, $\mu\text{S cm}^{-1}$

the smaller sloughs were greatly improved by the increased detail and refinement of the grid, the addition of off-channel storage, withdrawals for managed wetlands, and representation of evaporation in the tidal marsh areas. Flow through Montezuma Slough was low in comparison with measured data, and low flows through Hunter Cut were compensated by higher flows through Suisun Slough. These results have the potential of biasing modeled EC in the marsh restoration scenarios.

EC calibration results were also mixed, with some areas showing good correspondence with measured data, while other areas suffered from approximations intrinsic to the model or from the lack of sufficient data. In particular, density stratification is not explicitly represented in the 2-dimensional depth-averaged formulation used in the Bay-Delta model, leading to variations in the representation of EC. In the current model, diffusion coefficients are used to approximate effects due to density stratification. Using this method to improve the representation of EC during high flow periods tends to bias modeled EC when outflow is low. As a consequence, modeled EC at Martinez is low winter through spring and high summer through fall. This bias in modeled EC at Martinez propagates through western Suisun Marsh. In general, EC was low everywhere in the marsh in winter 2003. EC was low year-round in the eastern end of Montezuma Slough.

1.4. Summary of the Modeling Results

Four scenarios (Figure 1-1) for representative tidal marsh restoration in Suisun Marsh were modeled and compared to a Base case. The scenarios present a range of locations and acreages for restoration projects. Locations where levees were breached are indicated on Figure 1-1. As expected, each of the scenarios increased the tidal prism, i.e., the volume of water exchanged in the Suisun Marsh area, but muted the tidal range and shifted stage timing throughout the marsh in comparison with the Base case. Average tidal flow generally increased in the larger sloughs and decreased in smaller sloughs in the interior regions of Suisun Marsh. The peak velocity increased in sloughs near the breaches of the flooded areas, with the largest velocity changes localized at and near the mouths of the breached levees.

Electrical conductivity ($\mu\text{mhos cm}^{-1}$ or $\mu\text{Siemens cm}^{-1}$), or EC, was modeled as a surrogate for salinity. One part per thousand EC is equivalent to about $1.5 \mu\text{mhos cm}^{-1}$ of EC. EC in the Delta was similar to the Base case in each scenario January – June, but changed July – December in several of the scenarios. Delta EC decreased during the latter period for the Zone 4 and Set 1 scenarios where the breached areas were located in channels further from Suisun, Grizzly and Honker Bays. The Set 2 scenario resulted in EC increase in the Delta due to tidal trapping³ in the breached area adjacent to Suisun Bay. Tidal trapping in Zone 1 caused only minor increases in Delta EC.

Tidal restoration scenarios that decreased Delta EC tended to increase EC in Suisun Marsh, although changes in the details of the EC profile for each scenario depended on

³ Tidal trapping refers to the dispersive mechanism by which differences in tidal phase between a main channel and side channel or embayment create a net horizontal dispersion, in this case, of EC.

the particular location examined, the operation of the Suisun Marsh Salinity Control Gate (SMSCG), and the season. The Zone 1 scenario was most similar to the Base case, with little or no EC change in the eastern marsh but some increase in the west. The Zone 4 scenario decreased EC in most of the marsh whenever the SMSCG was operating, except in eastern Montezuma Slough where it increased EC. The Set 1 scenario generally resulted in the highest EC conditions in the Marsh, except upstream of the Zone 4 breaches on Montezuma Slough. The Set 2 scenario tended to increase EC in much of the marsh when the SMSCG was operating, with variable increase or decrease otherwise.

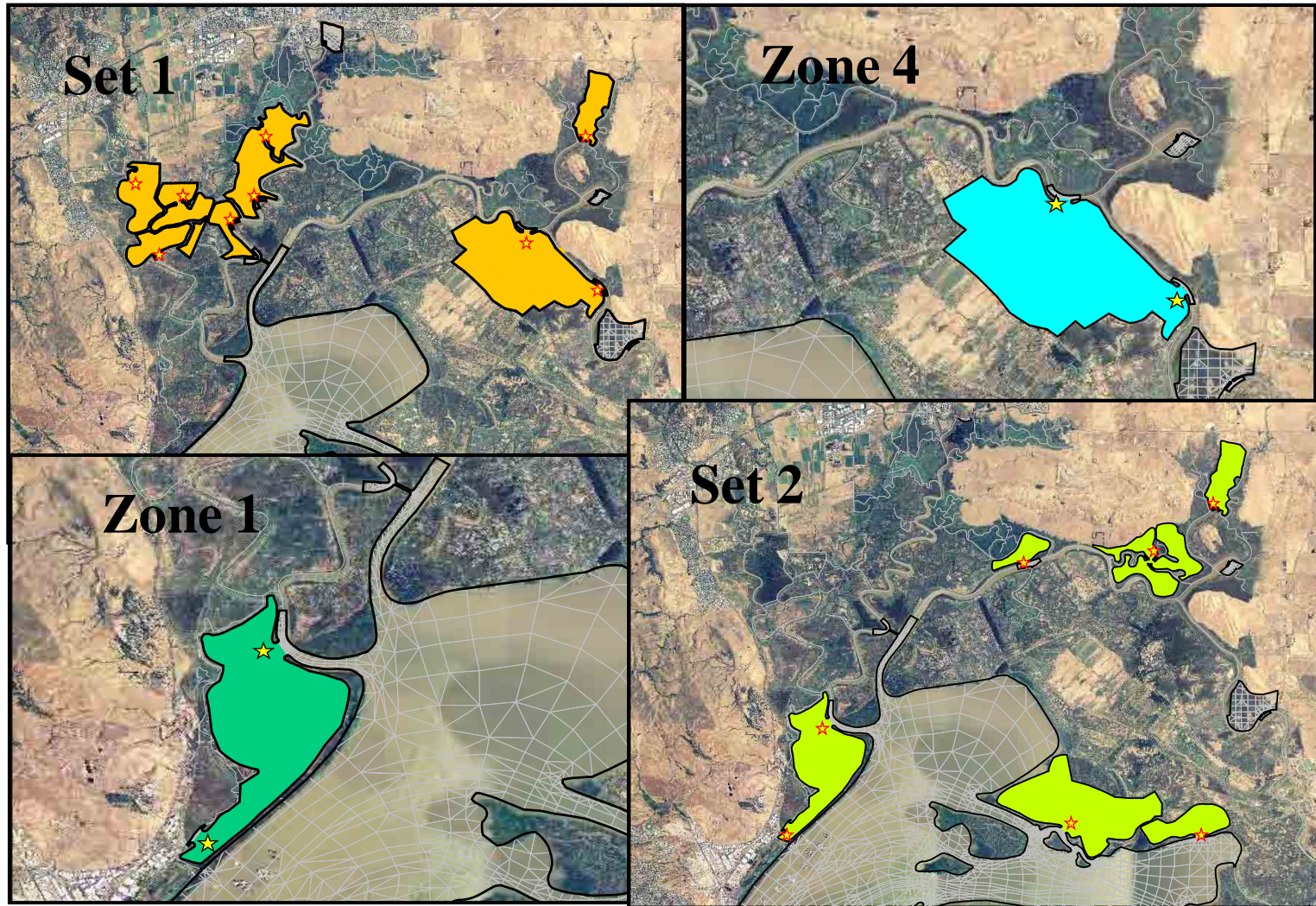


Figure 1-1 Regions flooded as tidal marsh in each of the scenarios, with the location of breaches in levees indicated by stars.