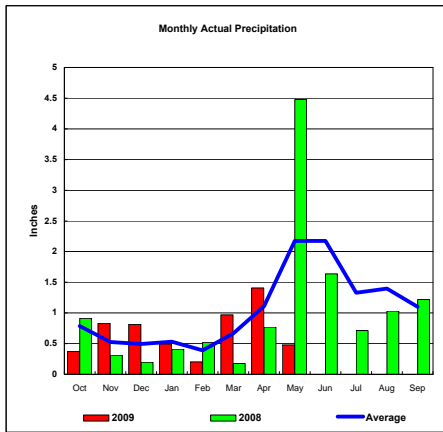
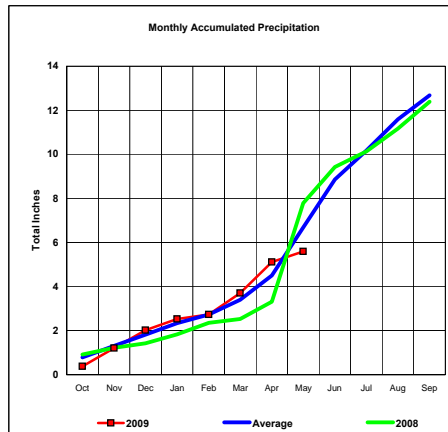


BASIN PRECIPITATION - ACTUAL MONTHLY vs AVERAGE MONTHLY TOTALS
Data for the Month of May 2009

Upper Missouri River Basin

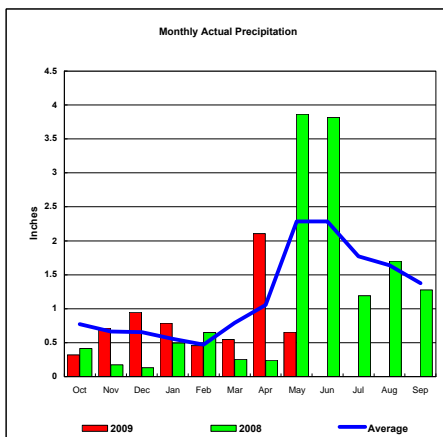


Total Actual Precipitation thru May (Inch.) - 5.59

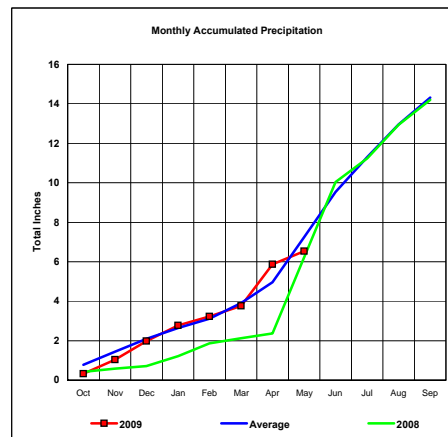


Total Average Precipitation thru May (Inch.) - 6.68
 Percent of Average for May - 83.61%

Milk River Basin

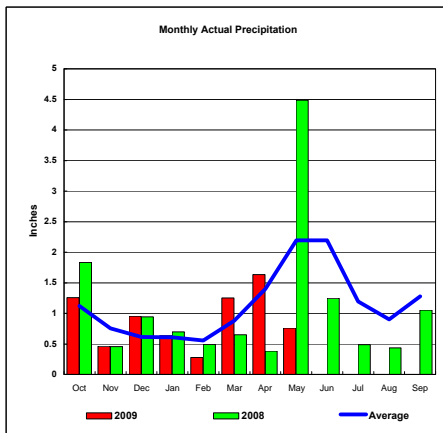


Total Actual Precipitation thru May (Inch.) - 6.53

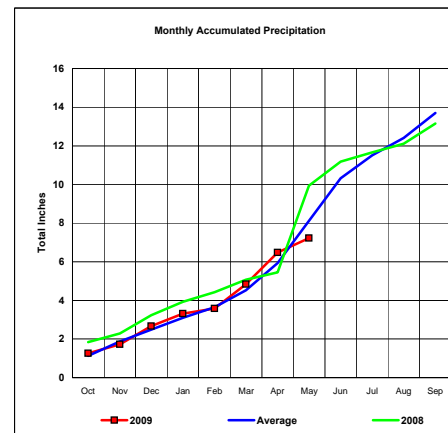


Total Average Precipitation thru May (Inch.) - 7.25
 Percent of Average for May - 90.00%

Bighorn River Basin



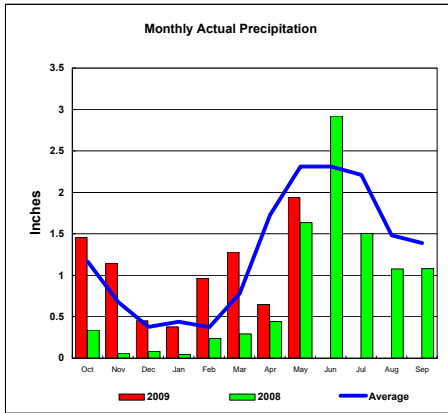
Total Actual Precipitation thru May (Inch.) - 7.23



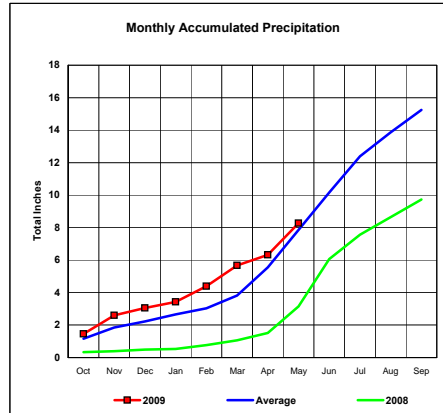
Total Average Precipitation thru May (Inch.) - 8.12
 Percent of Average for May - 88.98%

BASIN PRECIPITATION - ACTUAL MONTHLY vs AVERAGE MONTHLY TOTALS
Data for the Month of May 2009

Heart River Basin

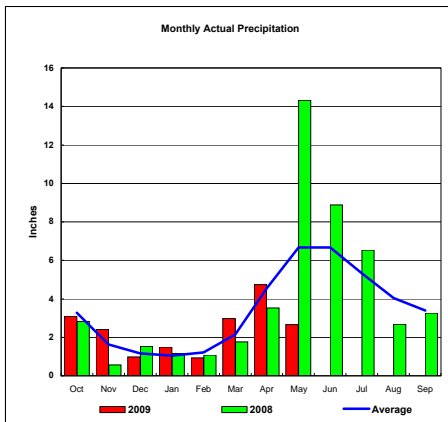


Total Actual Precipitation thru May (Inch.) - 8.27

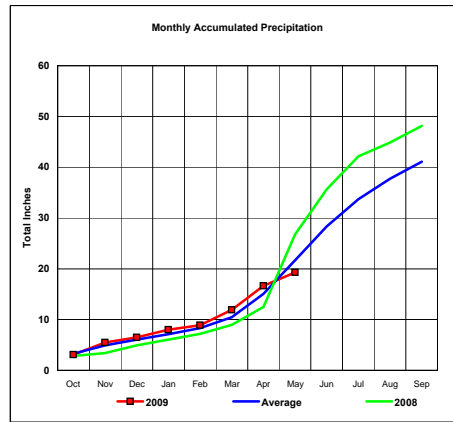


Total Average Precipitation thru May (Inch.) - 7.86
Percent of Average for May - 105.15%

Cheyenne River Basin

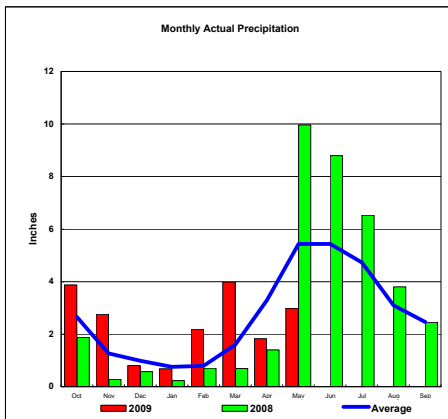


Total Actual Precipitation thru May (Inch.) - 19.29

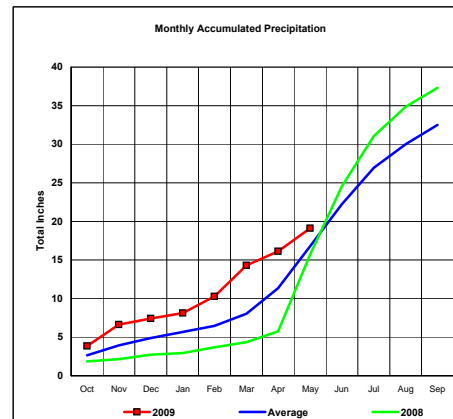


Total Average Precipitation thru May (Inch.) - 21.70
Percent of Average for May - 88.88%

Grand River Basin



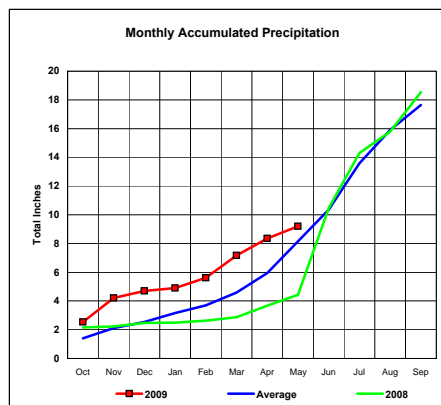
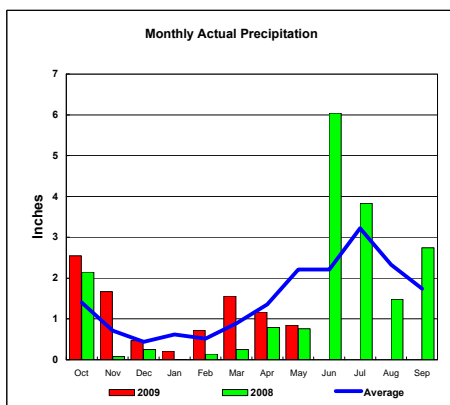
Total Actual Precipitation thru May (Inch.) - 19.09



Total Average Precipitation thru May (Inch.) - 16.77
Percent of Average for May - 113.83%

BASIN PRECIPITATION - ACTUAL MONTHLY vs AVERAGE MONTHLY TOTALS
Data for the Month of May 2009

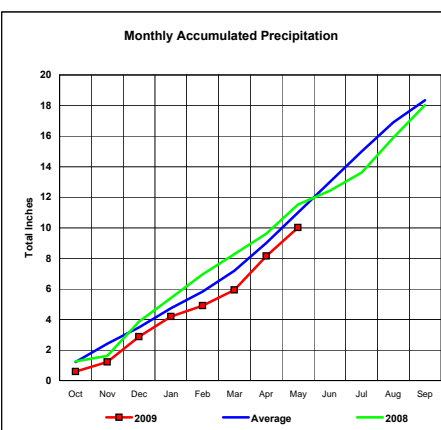
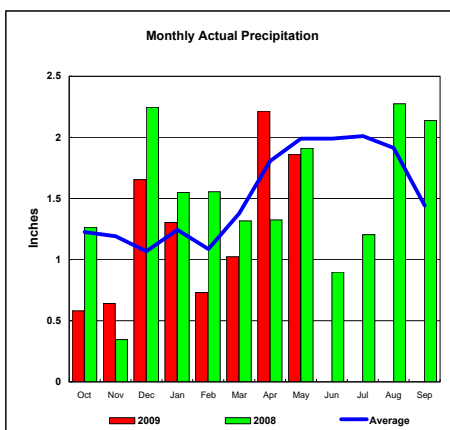
James River Basin



Total Actual Precipitation thru May (Inch.) - 9.20

Total Average Precipitation thru May (Inch.) - 8.15
Percent of Average for May - 112.88%

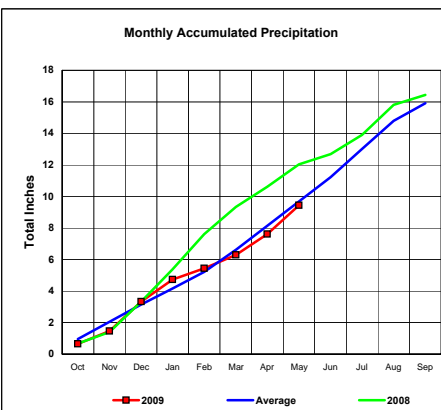
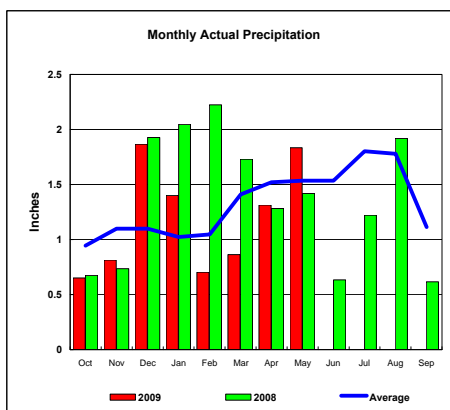
Colorado-Big Thompson Project



Total Actual Precipitation thru May (Inch.) - 10.01

Total Average Precipitation thru May (Inch.) - 10.99
Percent of Average for May - 91.10%

Fryingpan-Arkansas Project

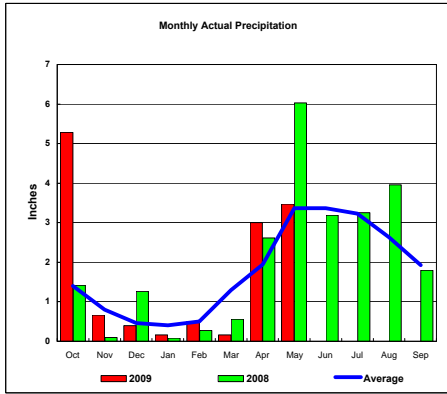


Total Actual Precipitation thru May (Inch.) - 9.45

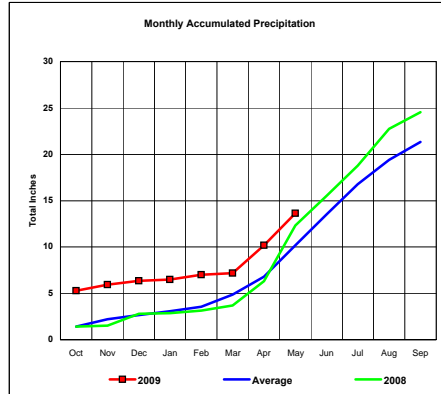
Total Average Precipitation thru May (Inch.) - 9.68
Percent of Average for May - 97.60%

BASIN PRECIPITATION - ACTUAL MONTHLY vs AVERAGE MONTHLY TOTALS
Data for the Month of May 2009

Republican River Basin

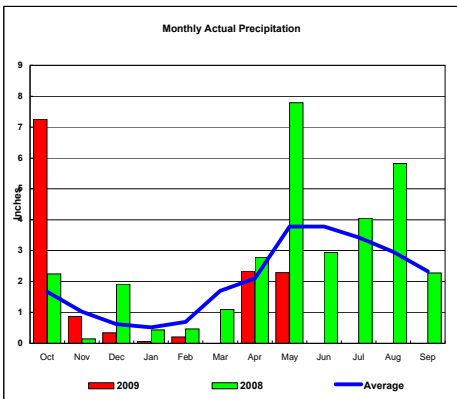


Total Actual Precipitation thru May (Inch.) - 13.64

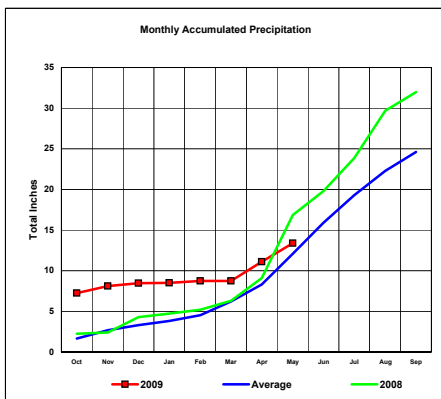


Total Average Precipitation thru May (Inch.) - 10.18
Percent of Average for May - 134.08%

Solomon River Basin

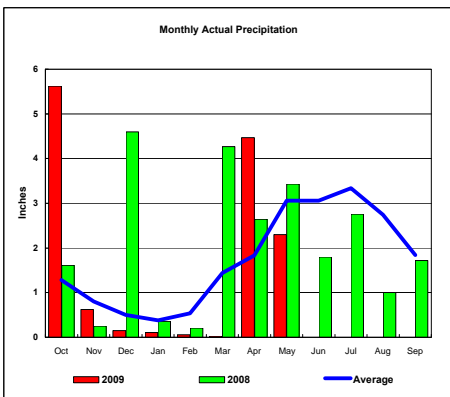


Total Actual Precipitation thru May (Inch.) - 13.38

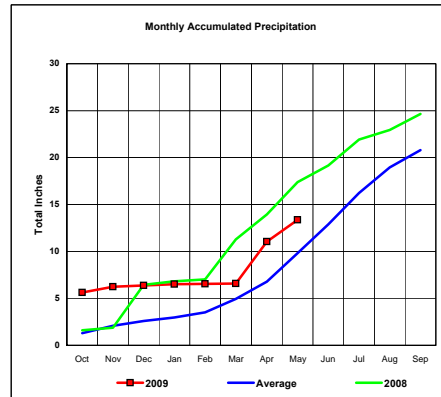


Total Average Precipitation thru May (Inch.) - 12.10
Percent of Average for May - 110.52%

Smoky Hill River Basin



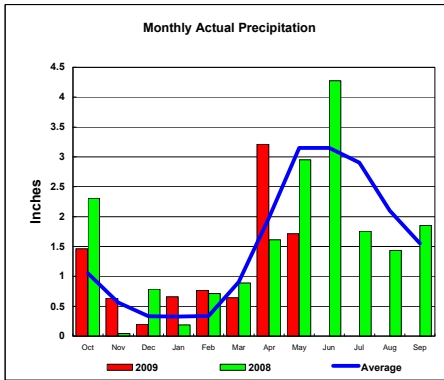
Total Actual Precipitation thru May (Inch.) - 13.36



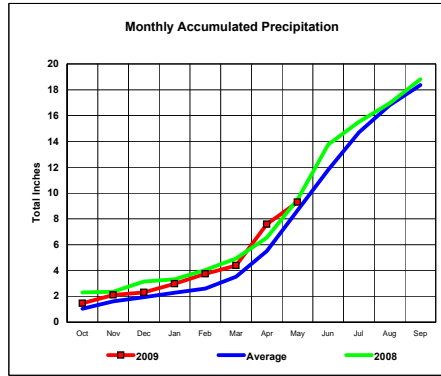
Total Average Precipitation thru May (Inch.) - 9.83
Percent of Average for May - 135.91%

BASIN PRECIPITATION - ACTUAL MONTHLY vs AVERAGE MONTHLY TOTALS
Data for the Month of May 2009

Niobrara River Basin

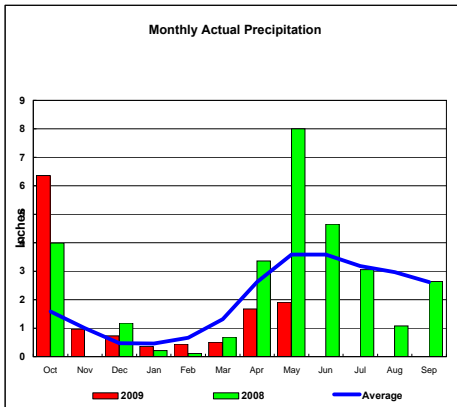


Total Actual Precipitation thru May (Inch.) - 9.31

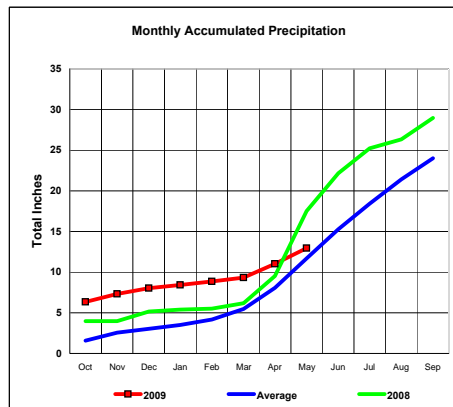


Total Average Precipitation thru May (Inch.) - 8.65
 Percent of Average for May - 107.57%

Lower Platte River Basin

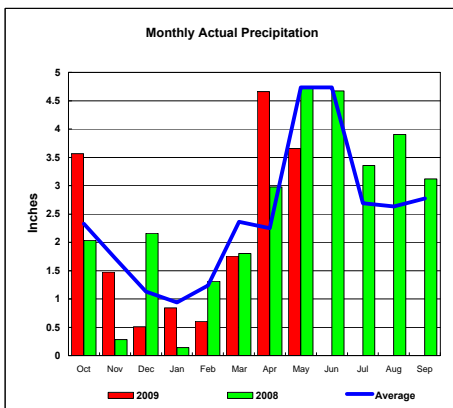


Total Actual Precipitation thru May (Inch.) - 12.94

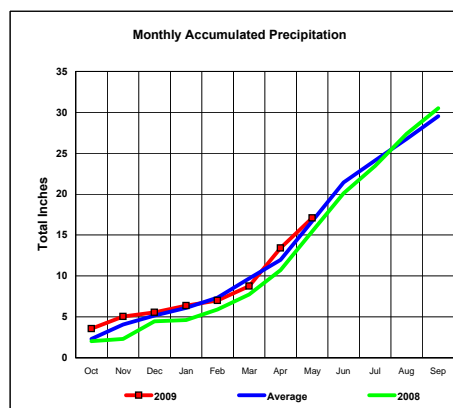


Total Average Precipitation thru May (Inch.) - 11.68
 Percent of Average for May - 110.79%

Arkansas River Basin



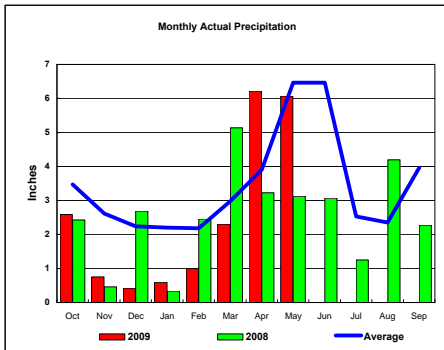
Total Actual Precipitation thru May (Inch.) - 17.07



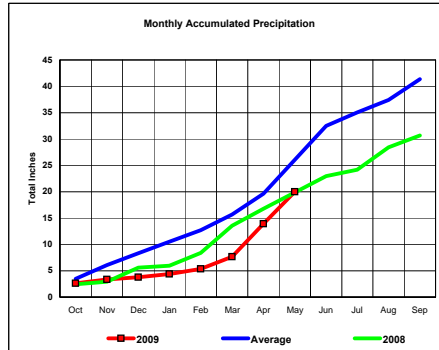
Total Average Precipitation thru May (Inch.) - 16.70
 Percent of Average for May - 102.22%

BASIN PRECIPITATION - ACTUAL MONTHLY vs AVERAGE MONTHLY TOTALS
Data for the Month of May 2009

Red River Basin

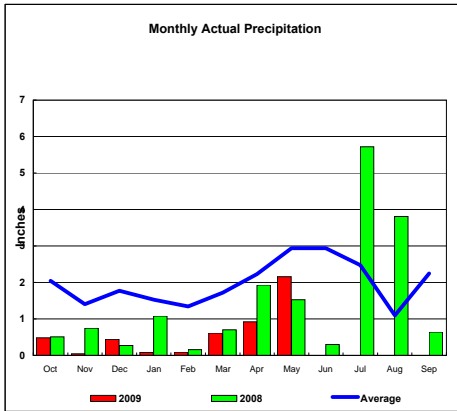


Total Actual Precipitation thru May (Inch.) - 19.96

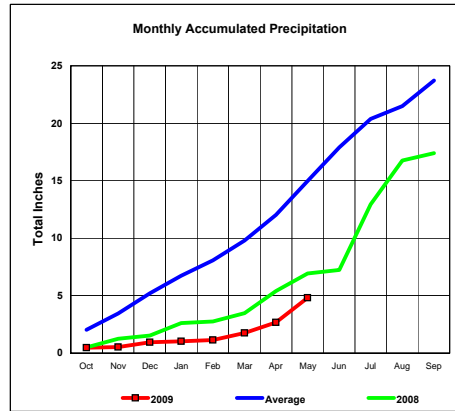


Total Average Precipitation thru May (Inch.) - 26.05
Percent of Average for May - 76.61%

Nueces River Basin

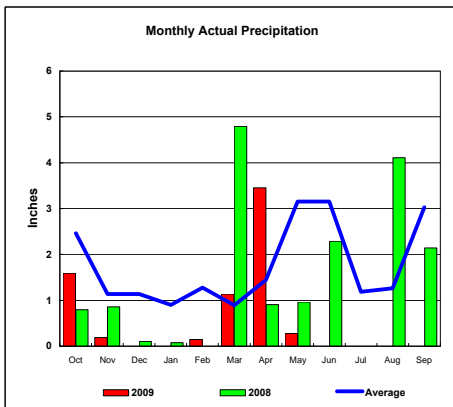


Total Actual Precipitation thru May (Inch.) - 4.82

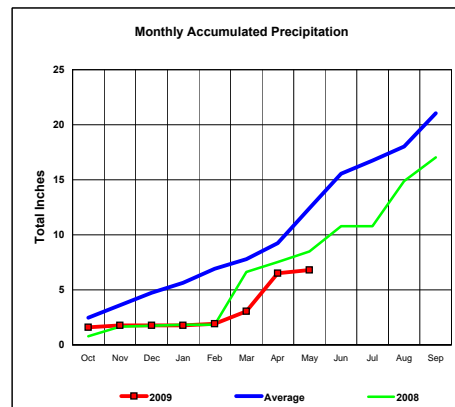


Total Average Precipitation thru May (Inch.) - 14.97
Percent of Average for May - 32.20%

Colorado River Basin



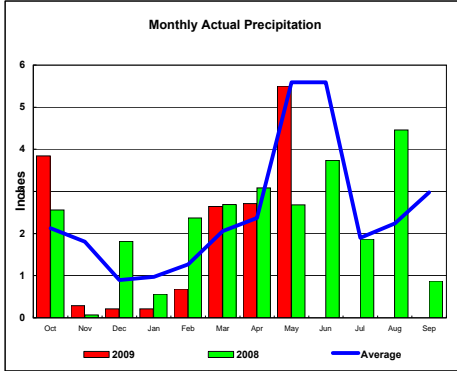
Total Actual Precipitation thru May (Inch.) - 6.80



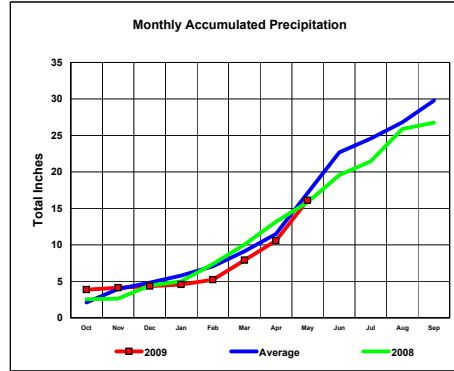
Total Average Precipitation thru May (Inch.) - 12.41
Percent of Average for May - 54.78%

BASIN PRECIPITATION - ACTUAL MONTHLY vs AVERAGE MONTHLY TOTALS
Data for the Month of May 2009

Washita River Basin

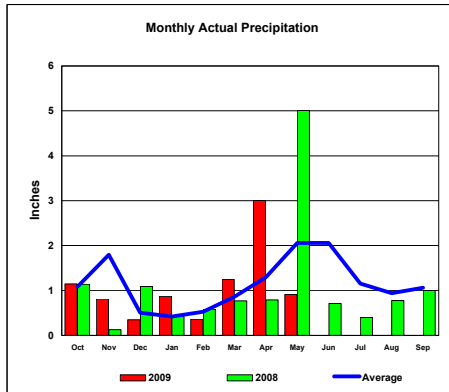


Total Actual Precipitation thru May (Inch.) - 16.09

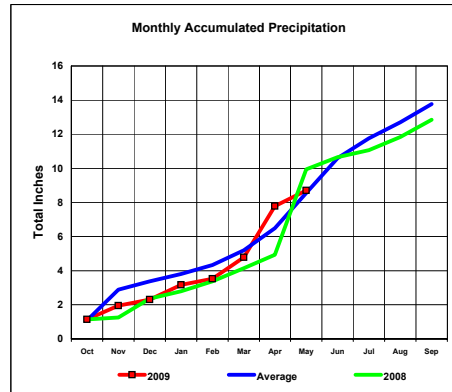


Total Average Precipitation thru May (Inch.) - 17.10
Percent of Average for May - 94.12%

North Platte River Basin



Total Actual Precipitation thru May (Inch.) - 8.70



Total Average Precipitation thru May (Inch.) - 8.55
Percent of Average for May - 101.73%