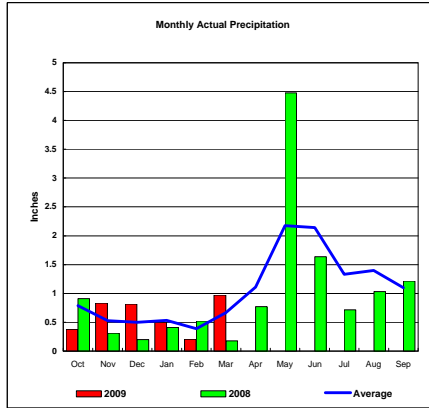
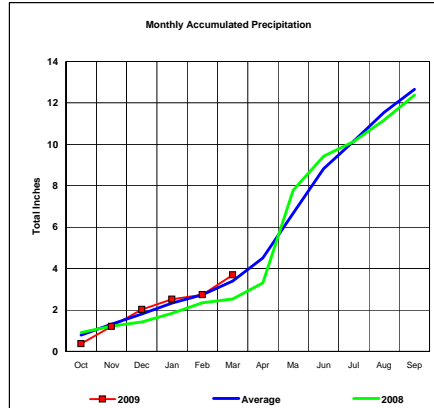


BASIN PRECIPITATION - ACTUAL MONTHLY vs AVERAGE MONTHLY TOTALS
Data for the month of March 2009

Upper Missouri River Basin

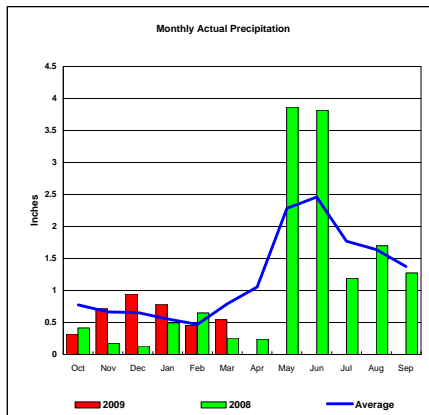


Total Actual Precipitation thru March (Inch.) - 3.70

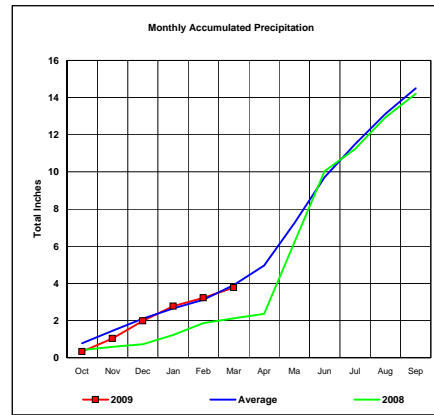


Total Average Precipitation thru March (Inch.) - 3.40
Percent of Average for March - 108.91%

Milk River Basin

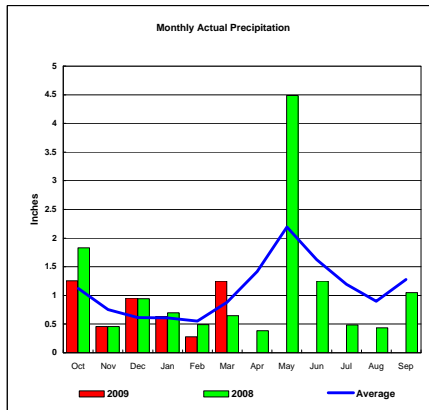


Total Actual Precipitation thru March (Inch.) - 3.77

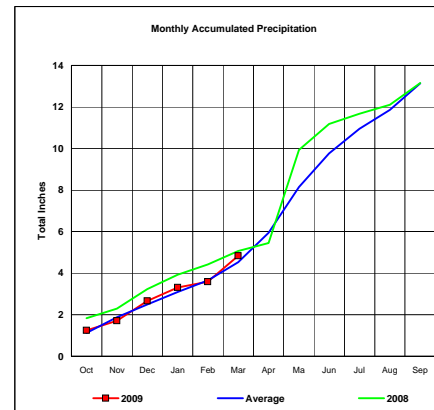


Total Average Precipitation thru March (Inch.) - 3.91
Percent of Average for March - 96.29%

Bighorn River Basin



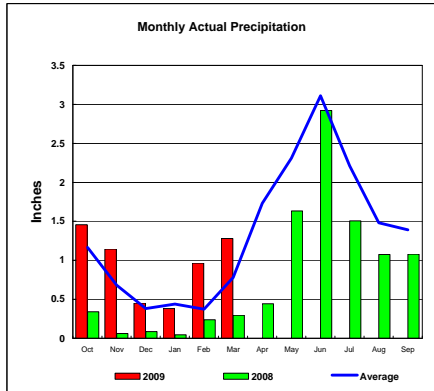
Total Actual Precipitation thru March (Inch.) - 4.84



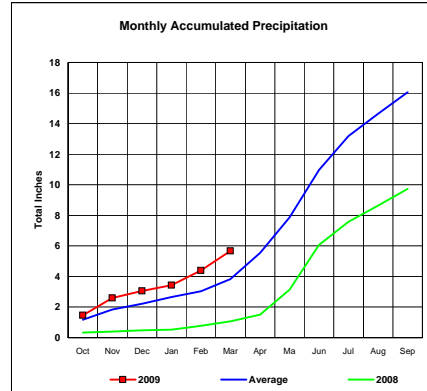
Total Average Precipitation thru March (Inch.) - 4.53
Percent of Average for March - 106.79%

BASIN PRECIPITATION - ACTUAL MONTHLY vs AVERAGE MONTHLY TOTALS
 Data for the month of March 2009

Heart River Basin

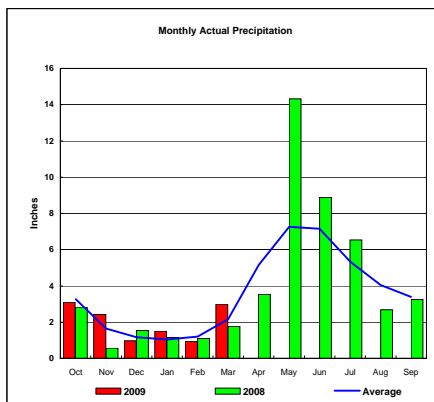


Total Actual Precipitation thru March (Inch.) - 5.68

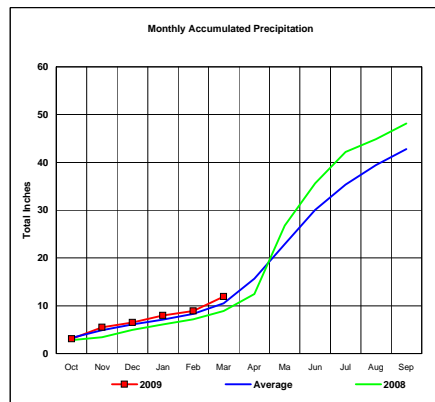


Total Average Precipitation thru March (Inch.) - 3.82
 Percent of Average for March - 148.56%

Cheyenne River Basin

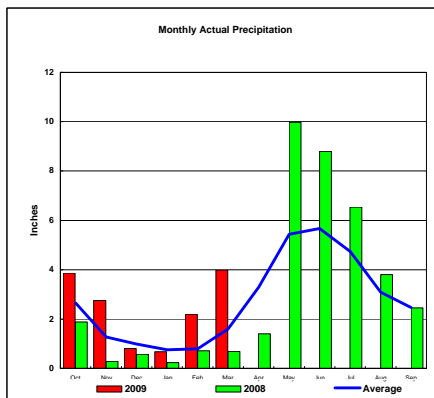


Total Actual Precipitation thru March (Inch.) - 11.89

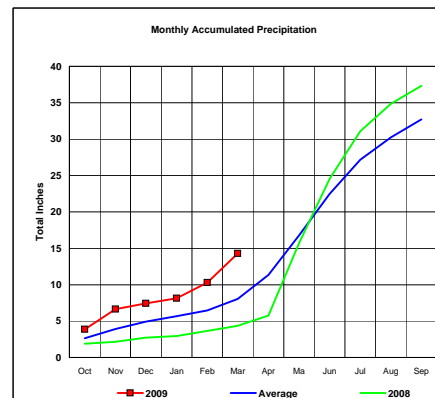


Total Average Precipitation thru March (Inch.) - 10.48
 Percent of Average for March - 113.43%

Grand River Basin



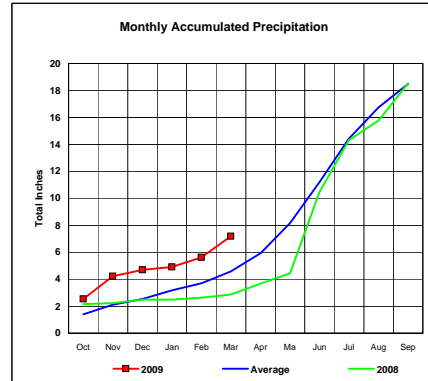
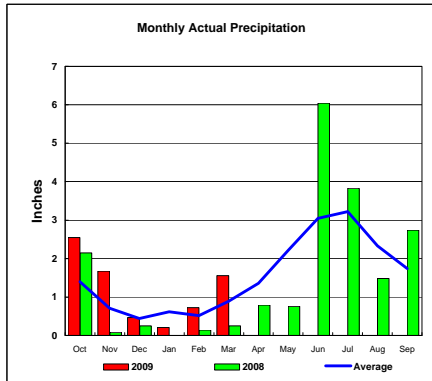
Total Actual Precipitation thru March (Inch.) - 14.28



Total Average Precipitation thru March (Inch.) - 8.05
 Percent of Average for March - 177.39%

BASIN PRECIPITATION - ACTUAL MONTHLY vs AVERAGE MONTHLY TOTALS
Data for the month of March 2009

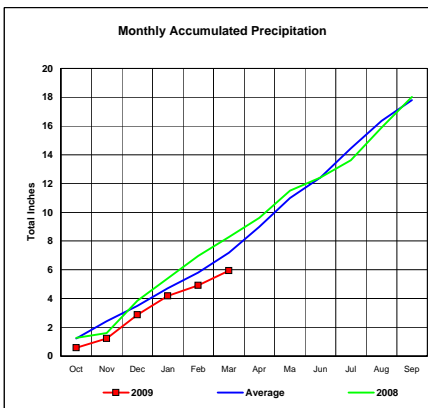
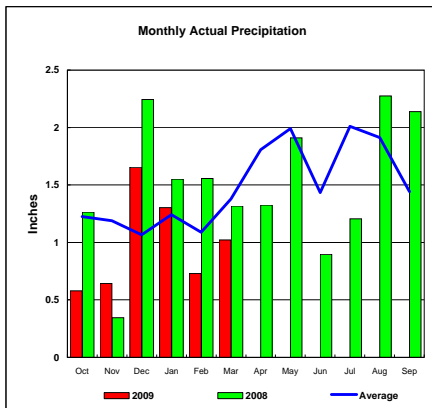
James River Basin



Total Actual Precipitation thru March (Inch.) - 7.18

Total Average Precipitation thru March (Inch.) - 4.58
Percent of Average for March - 156.77%

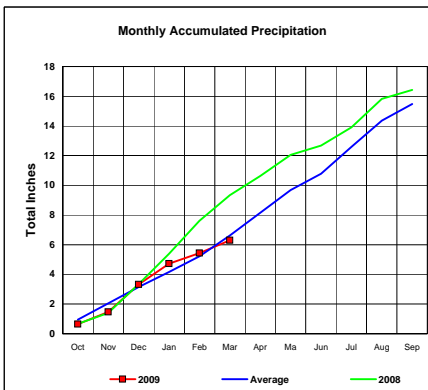
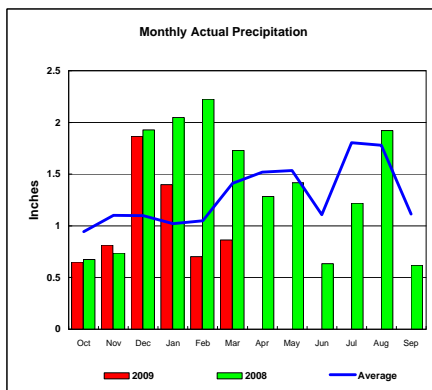
Colorado-Big Thompson Project



Total Actual Precipitation thru March (Inch.) - 5.93

Total Average Precipitation thru March (Inch.) - 7.19
Percent of Average for March - 82.51%

Fryingpan-Arkansas Project

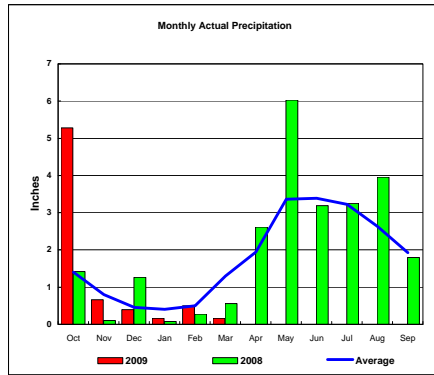


Total Actual Precipitation thru March (Inch.) - 6.30

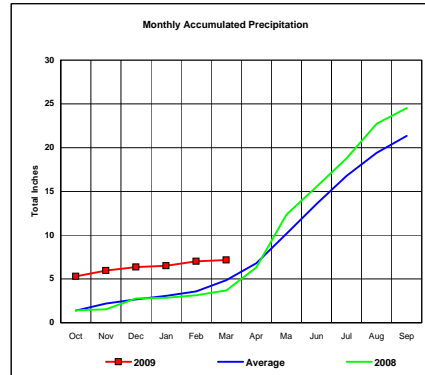
Total Average Precipitation thru March (Inch.) - 6.62
Percent of Average for March - 95.05%

BASIN PRECIPITATION - ACTUAL MONTHLY vs AVERAGE MONTHLY TOTALS
Data for the month of March 2009

Republican River Basin

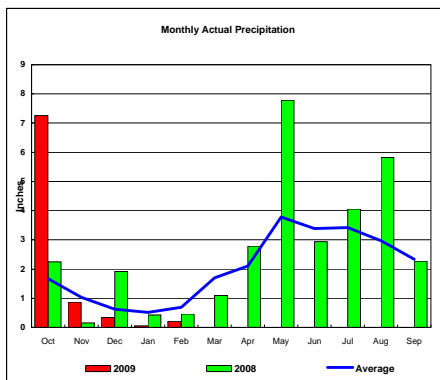


Total Actual Precipitation thru March (Inch.) - 7.17

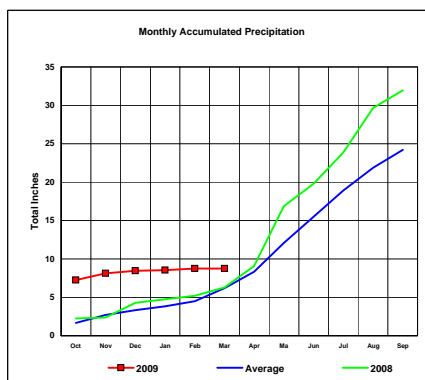


Total Average Precipitation thru March (Inch.) - 4.87
 Percent of Average for March - 147.34%

Solomon River Basin

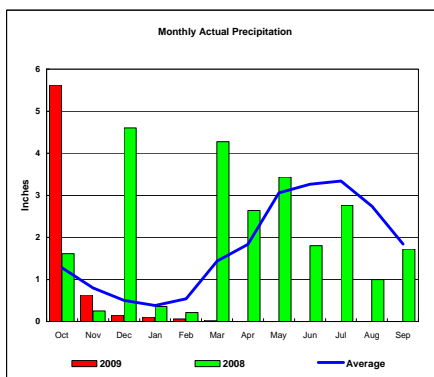


Total Actual Precipitation thru March (Inch.) - 8.74

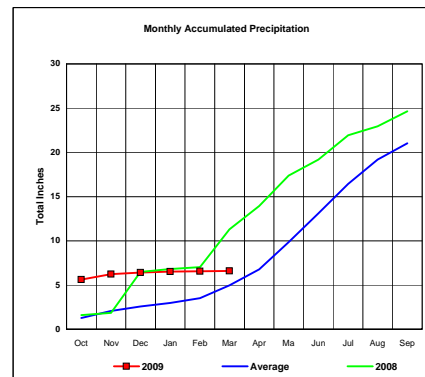


Total Average Precipitation thru March (Inch.) - 6.21
 Percent of Average for March - 140.72%

Smoky Hill River Basin



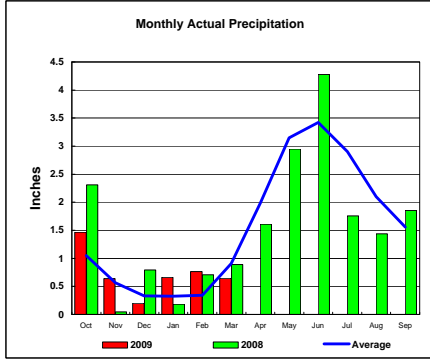
Total Actual Precipitation thru March (Inch.) - 6.59



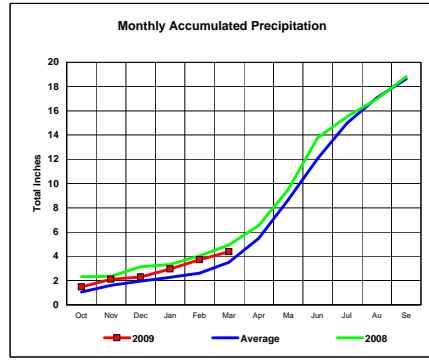
Total Average Precipitation thru March (Inch.) - 4.94
 Percent of Average for March - 133.40%

BASIN PRECIPITATION - ACTUAL MONTHLY vs AVERAGE MONTHLY TOTALS
 Data for the month of March 2009

Niobrara River Basin

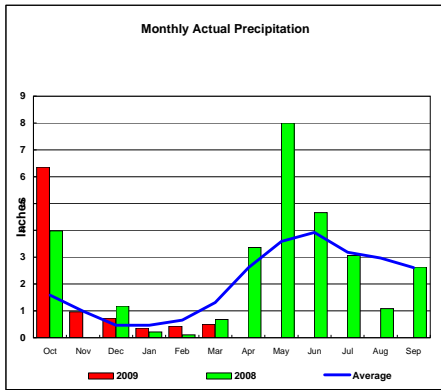


Total Actual Precipitation thru March (Inch.) - 4.38

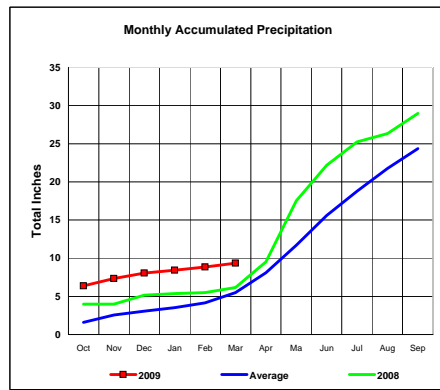


Total Average Precipitation thru March (Inch.) - 3.52
 Percent of Average for March - 124.47%

Lower Platte River Basin

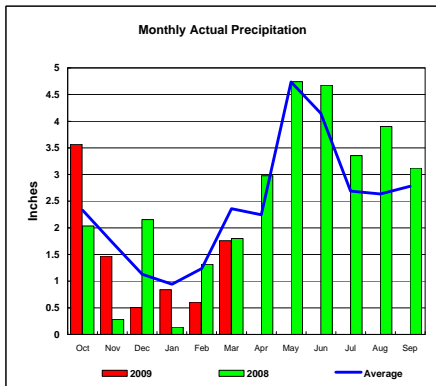


Total Actual Precipitation thru March (Inch.) - 9.35

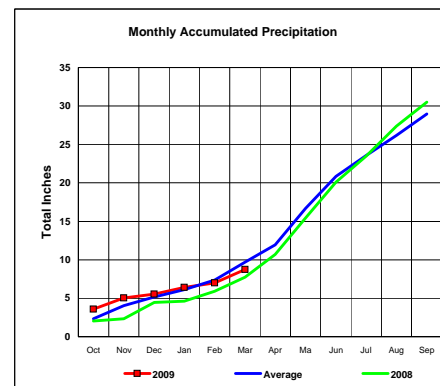


Total Average Precipitation thru March (Inch.) - 5.48
 Percent of Average for March - 170.78%

Arkansas River Basin



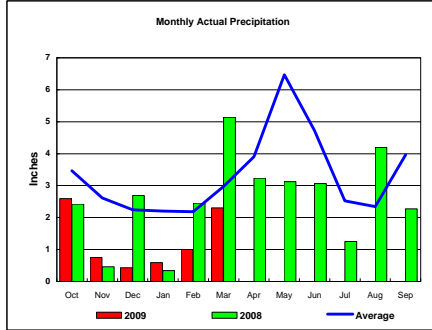
Total Actual Precipitation thru March (Inch.) - 8.75



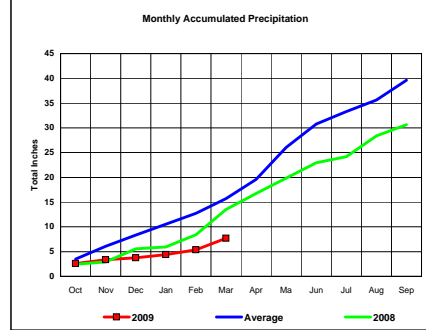
Total Average Precipitation thru March (Inch.) - 9.72
 Percent of Average for March - 90.05%

BASIN PRECIPITATION - ACTUAL MONTHLY vs AVERAGE MONTHLY TOTALS
Data for the month of March 2009

Red River Basin

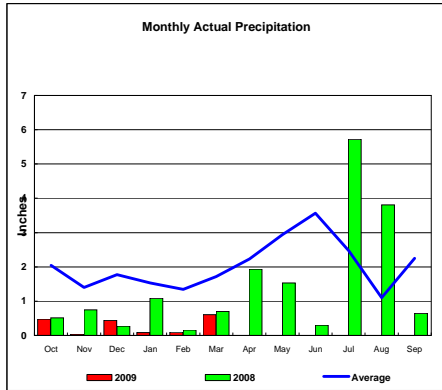


Total Actual Precipitation thru March (Inch.) - 7.67

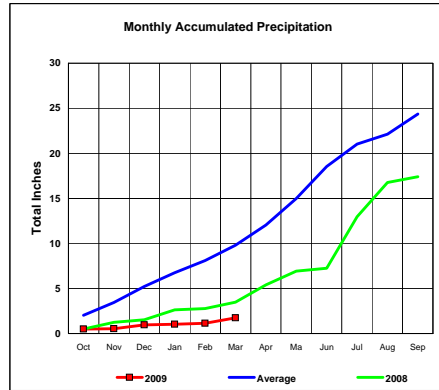


Total Average Precipitation thru March (Inch.) - 15.68
Percent of Average for March - 48.93%

Nueces River Basin

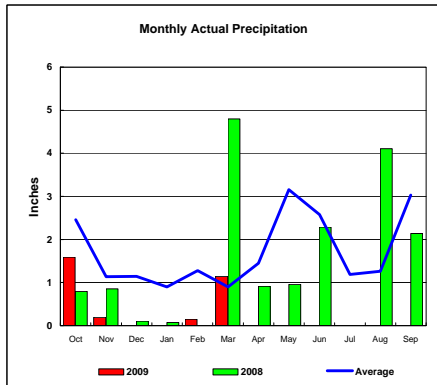


Total Actual Precipitation thru March (Inch.) - 1.74

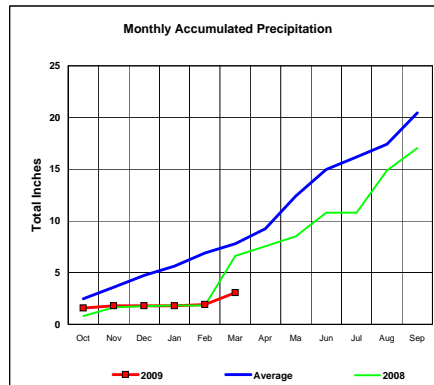


Total Average Precipitation thru March (Inch.) - 9.80
Percent of Average for March - 17.76%

Colorado River Basin



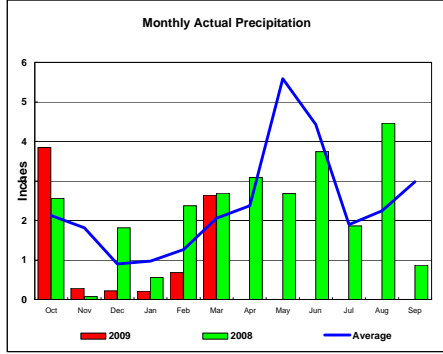
Total Actual Precipitation thru March (Inch.) - 3.07



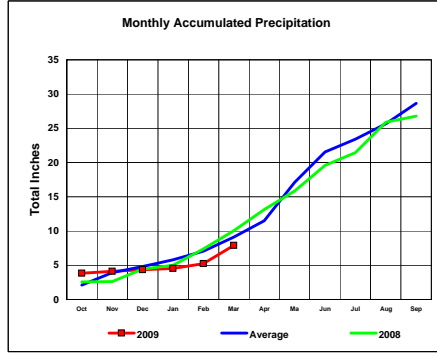
Total Average Precipitation thru March (Inch.) - 7.81
Percent of Average for March - 39.27%

BASIN PRECIPITATION - ACTUAL MONTHLY vs AVERAGE MONTHLY TOTALS
 Data for the month of March 2009

Washita River Basin

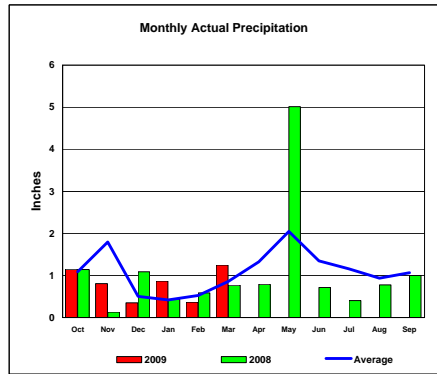


Total Actual Precipitation thru March (Inch.) - 7.88

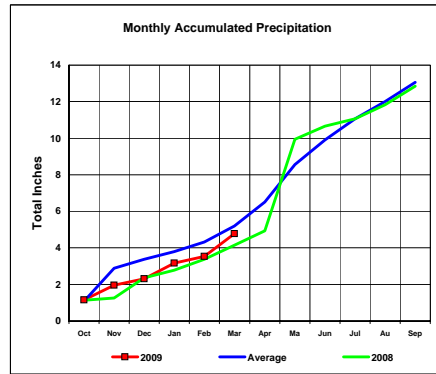


Total Average Precipitation thru March (Inch.) - 9.14
 Percent of Average for March - 86.21%

North Platte River Basin



Total Actual Precipitation thru March (Inch.) - 4.78



Total Average Precipitation thru March (Inch.) - 5.19
 Percent of Average for March - 92.10%