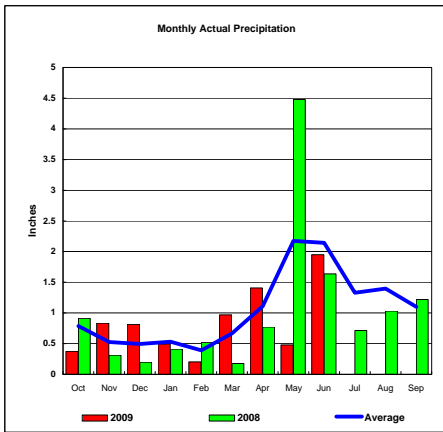
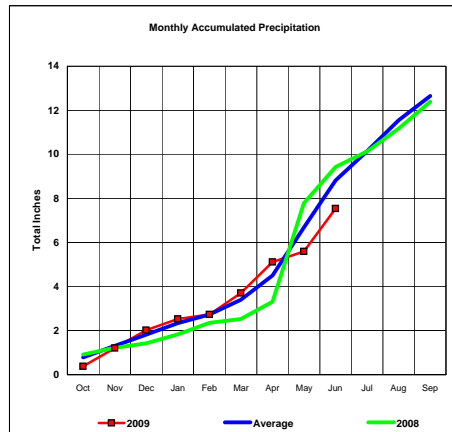


Basin Precipitation - Actual Monthly vs Average Monthly Totals
Data for the Month of June 2009

Upper Missouri River Basin

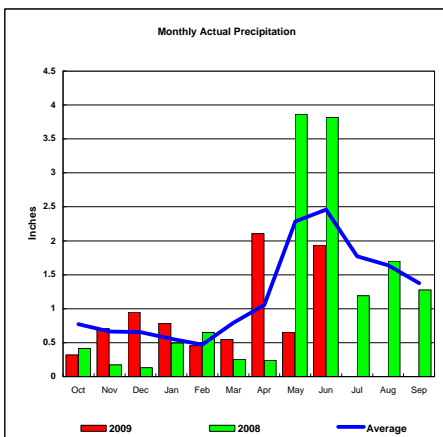


Total Actual Precipitation thru June (Inch.) - 7.54

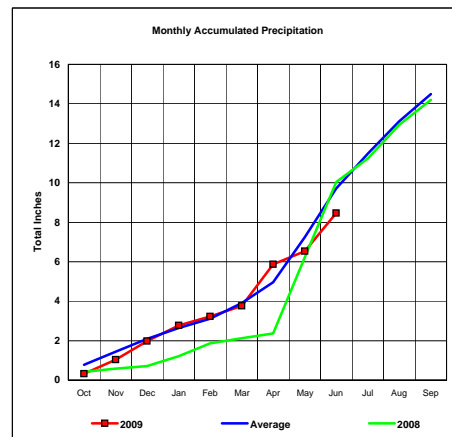


Total Average Precipitation thru June (Inch.) - 8.82
Percent of Average for June - 85.43%

Milk River Basin

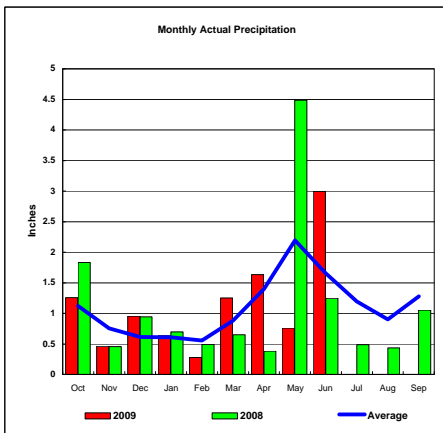


Total Actual Precipitation thru June (Inch.) - 8.46

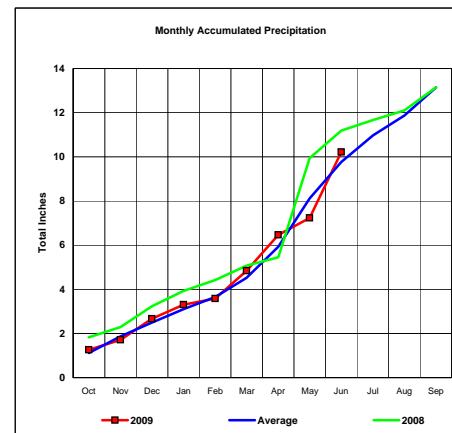


Total Average Precipitation thru June (Inch.) - 9.71
Percent of Average for June - 87.13%

Bighorn River Basin



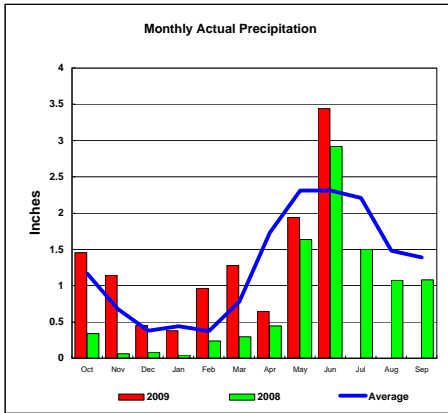
Total Actual Precipitation thru June (Inch.) - 10.22



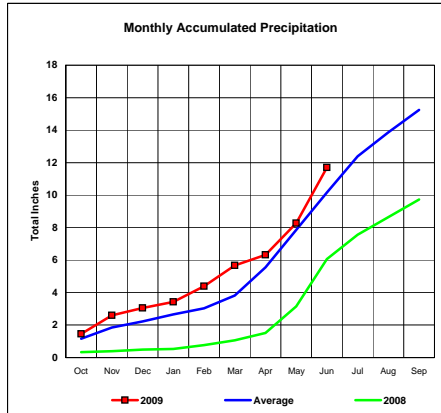
Total Average Precipitation thru June (Inch.) - 9.78
Percent of Average for June - 104.58%

BASIN PRECIPITATION - ACTUAL MONTHLY vs AVERAGE MONTHLY TOTALS
Data for the Aonth of June 2009

Heart River Basin

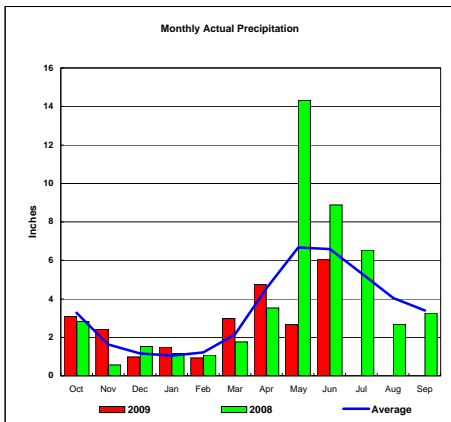


Total Actual Precipitation thru June (Inch.) - 11.71

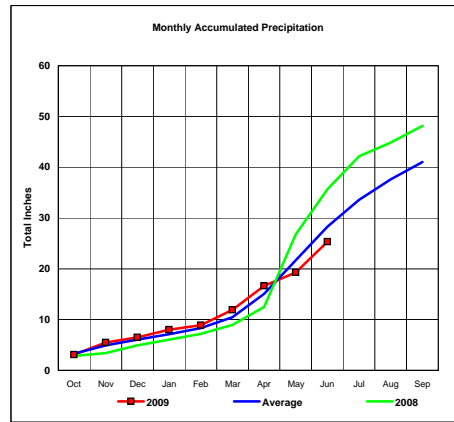


Total Average Precipitation thru June (Inch.) - 10.17
Percent of Average for June - 115.09%

Cheyenne River Basin

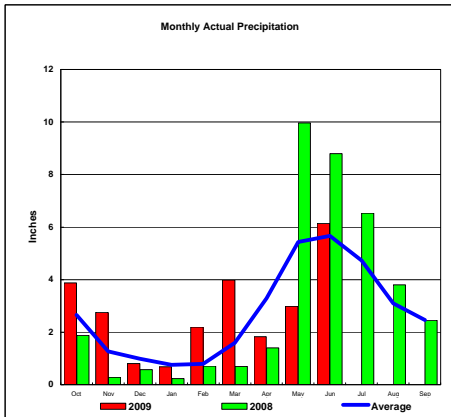


Total Actual Precipitation thru June (Inch.) - 25.33

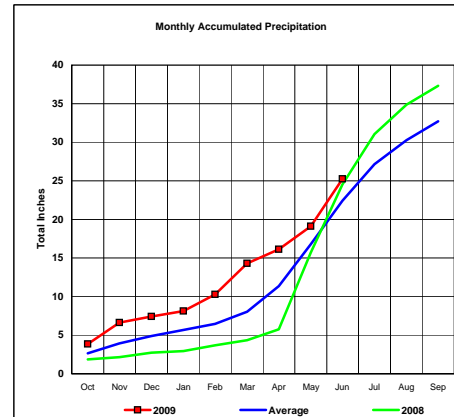


Total Average Precipitation thru June (Inch.) - 28.28
Percent of Average for June - 89.56%

Grand River Basin



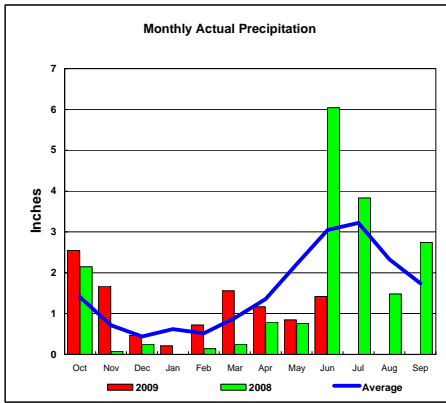
Total Actual Precipitation thru June (Inch.) - 25.23



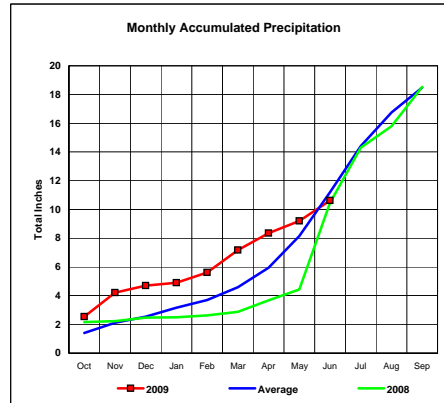
Total Average Precipitation thru June (Inch.) - 22.44
Percent of Average for June - 112.43%

BASIN PRECIPITATION - ACTUAL MONTHLY vs AVERAGE MONTHLY TOTALS
Data for the Aonth of June 2009

James River Basin

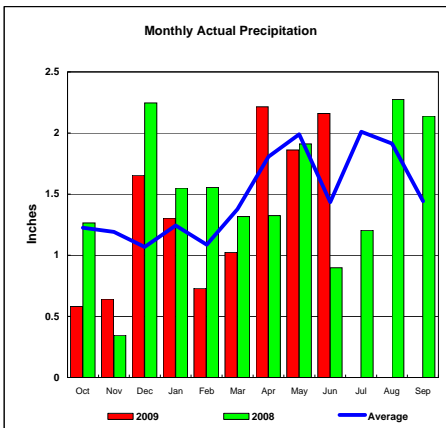


Total Actual Precipitation thru June (Inch.) - 10.62

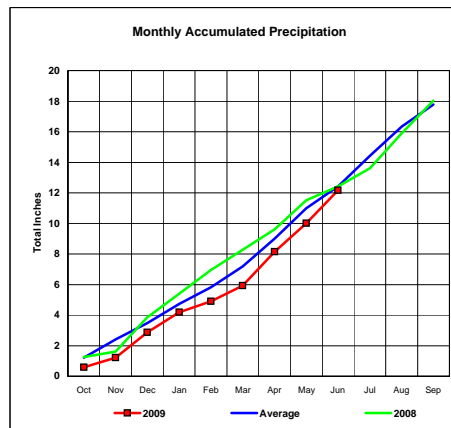


Total Average Precipitation thru June (Inch.) - 11.20
Percent of Average for June - 94.82%

Colorado-Big Thompson Project

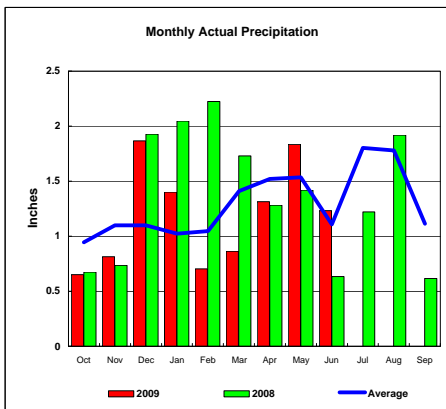


Total Actual Precipitation thru June (Inch.) - 12.17

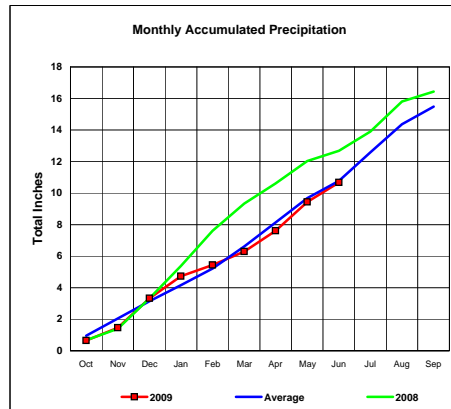


Total Average Precipitation thru June (Inch.) - 12.42
Percent of Average for June - 97.97%

Fryingpan-Arkansas Project



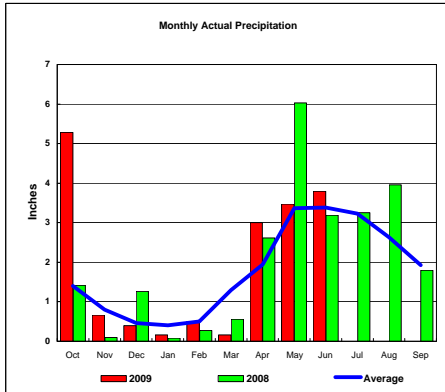
Total Actual Precipitation thru June (Inch.) - 10.68



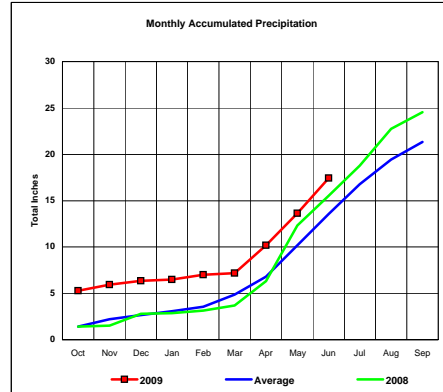
Total Average Precipitation thru June (Inch.) - 10.79
Percent of Average for June - 99.00%

BASIN PRECIPITATION - ACTUAL MONTHLY vs AVERAGE MONTHLY TOTALS
 Data for the Month of June 2009

Republican River Basin

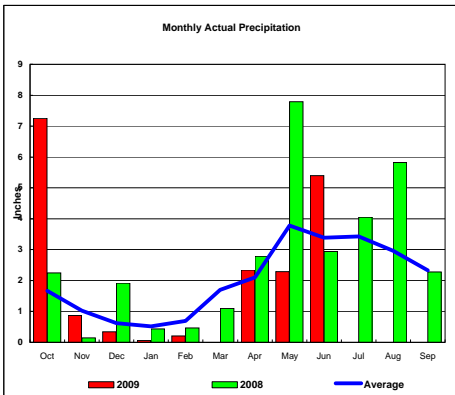


Total Actual Precipitation thru June (Inch.) - 17.44

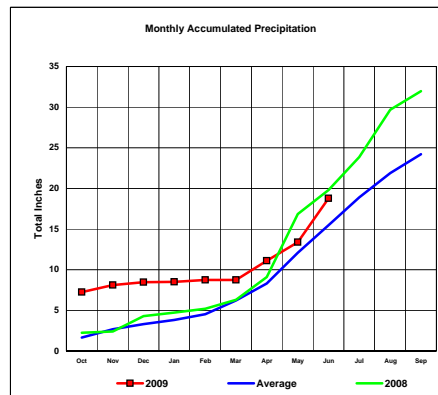


Total Average Precipitation thru June (Inch.) - 13.56
 Percent of Average for June - 128.58%

Solomon River Basin

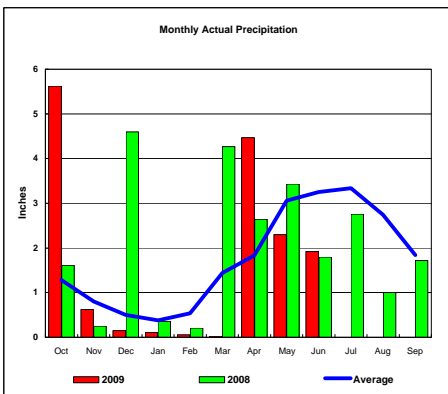


Total Actual Precipitation thru June (Inch.) - 18.77

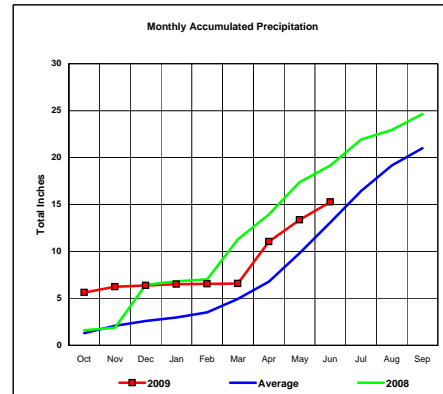


Total Average Precipitation thru June (Inch.) - 15.49
 Percent of Average for June - 121.20%

Smoky Hill River Basin



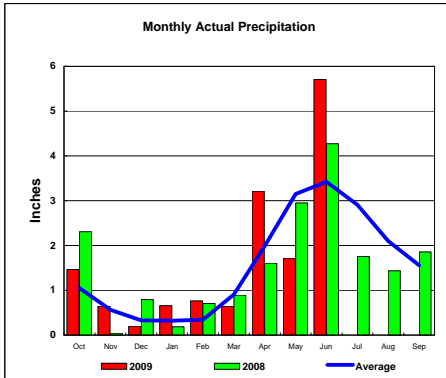
Total Actual Precipitation thru June (Inch.) - 15.28



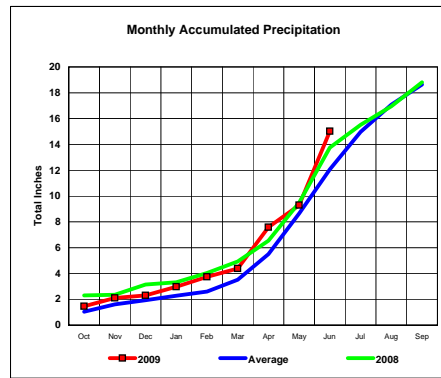
Total Average Precipitation thru June (Inch.) - 13.08
 Percent of Average for June - 116.82%

BASIN PRECIPITATION - ACTUAL MONTHLY vs AVERAGE MONTHLY TOTALS
 Data for the Aonth of June 2009

Niobrara River Basin

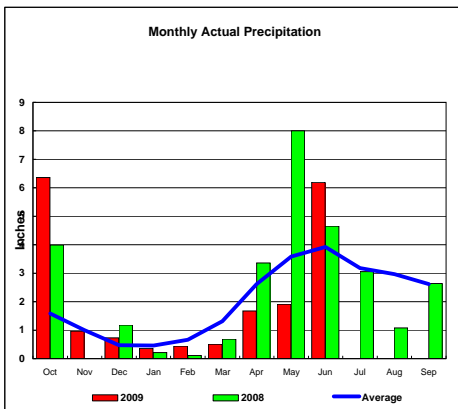


Total Actual Precipitation thru June (Inch.) - 15.02

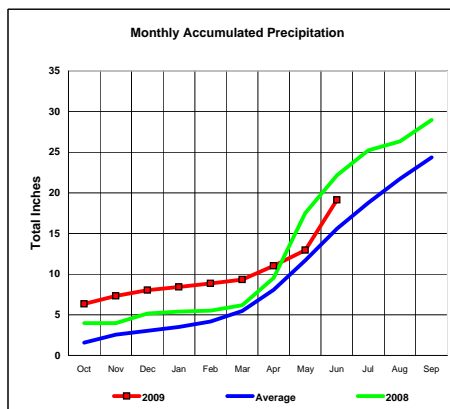


Total Average Precipitation thru June (Inch.) - 12.07
 Percent of Average for June - 124.40%

Lower Platte River Basin

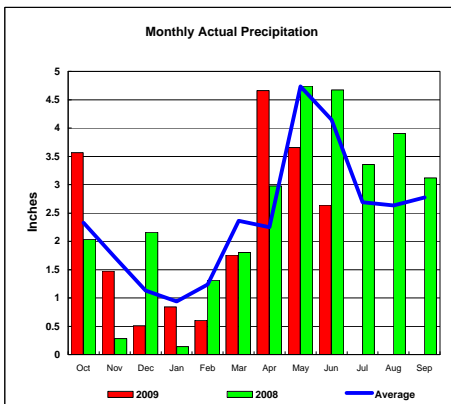


Total Actual Precipitation thru June (Inch.) - 19.13

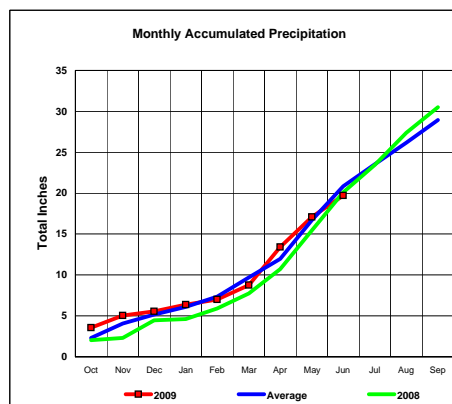


Total Average Precipitation thru June (Inch.) - 15.60
 Percent of Average for June - 122.63%

Arkansas River Basin



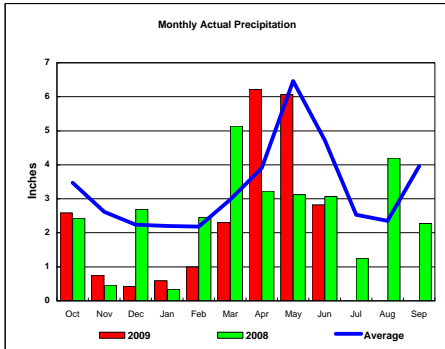
Total Actual Precipitation thru June (Inch.) - 19.71



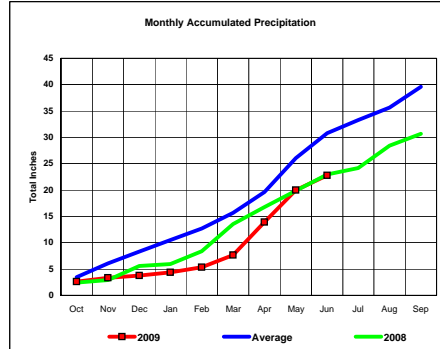
Total Average Precipitation thru June (Inch.) - 20.85
 Percent of Average for June - 94.53%

BASIN PRECIPITATION - ACTUAL MONTHLY vs AVERAGE MONTHLY TOTALS
Data for the Aonth of June 2009

Red River Basin

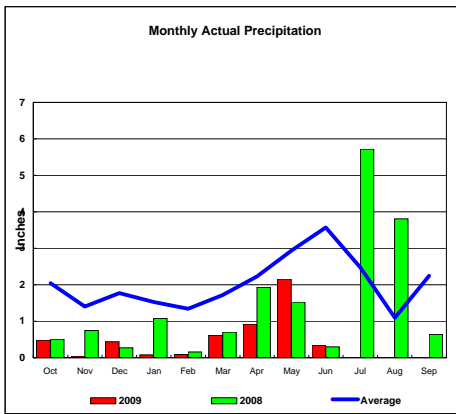


Total Actual Precipitation thru June (Inch.) - 22.78

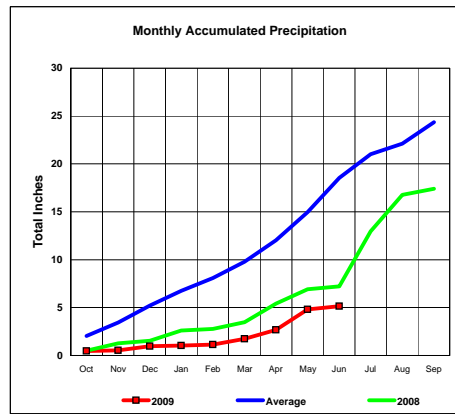


Total Average Precipitation thru June (Inch.) - 30.78
Percent of Average for June - 74.02%

Nueces River Basin

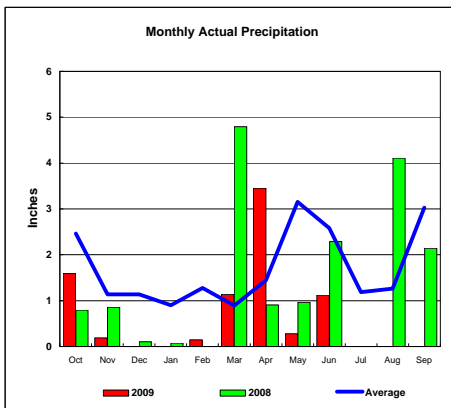


Total Actual Precipitation thru June (Inch.) - 5.16

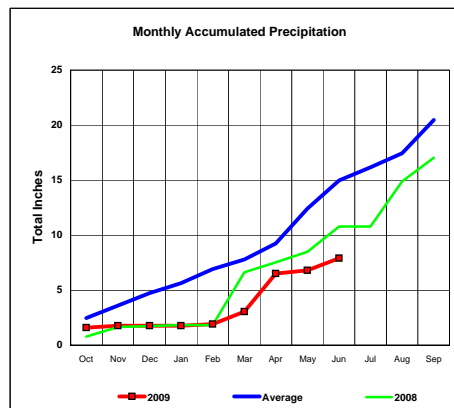


Total Average Precipitation thru June (Inch.) - 18.54
Percent of Average for June - 27.83%

Colorado River Basin



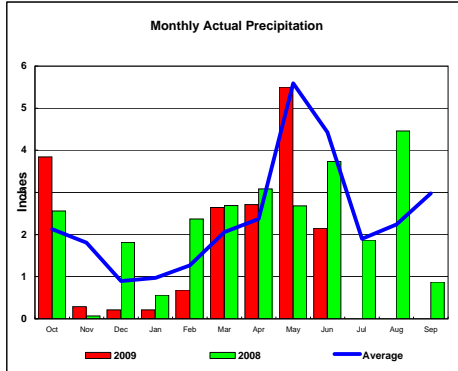
Total Actual Precipitation thru June (Inch.) - 7.92



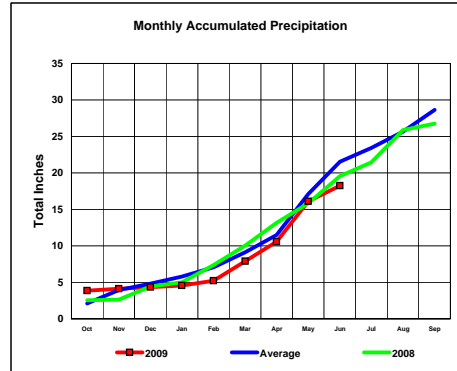
Total Average Precipitation thru June (Inch.) - 14.99
Percent of Average for June - 52.82%

BASIN PRECIPITATION - ACTUAL MONTHLY vs AVERAGE MONTHLY TOTALS
Data for the Aonth of June 2009

Washita River Basin

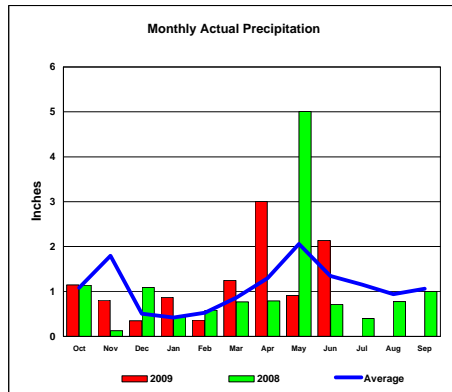


Total Actual Precipitation thru June (Inch.) - 18.24

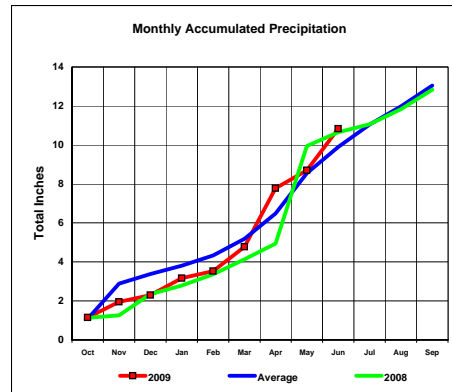


Total Average Precipitation thru June (Inch.) - 21.53
Percent of Average for June - 84.74%

North Platte River Basin



Total Actual Precipitation thru June (Inch.) - 10.84



Total Average Precipitation thru June (Inch.) - 9.89
Percent of Average for June - 109.51%