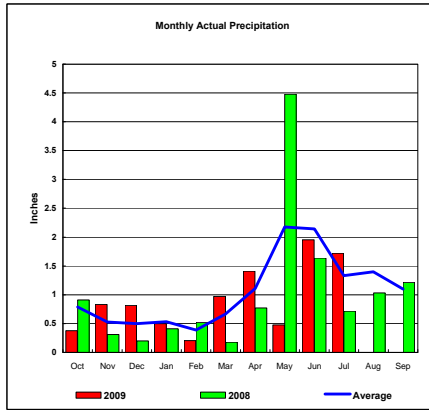
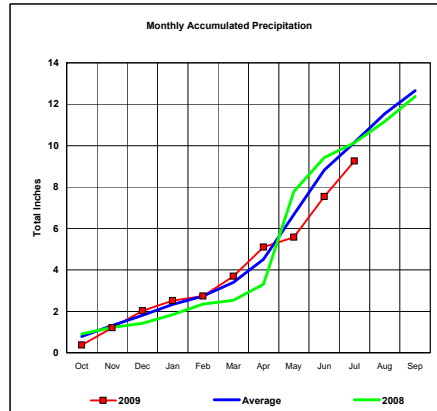


BASIN PRECIPITATION - ACTUAL MONTHLY vs AVERAGE MONTHLY TOTALS
Data for the Month of July 2009

Upper Missouri River Basin

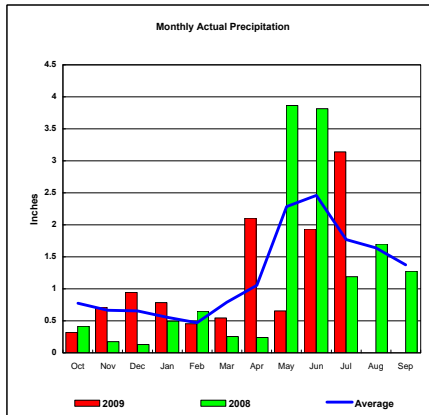


Total Actual Precipitation thru July (Inch.) - 9.26

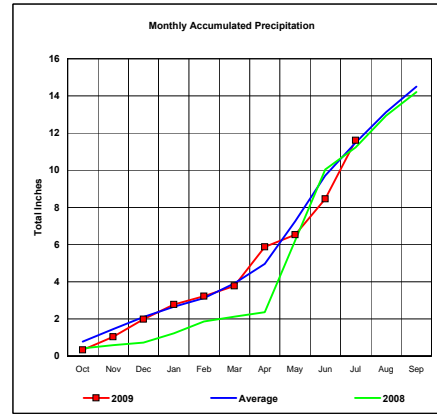


Total Average Precipitation thru July (Inch.) - 10.15
 Percent of Average for July - 91.18%

Milk River Basin

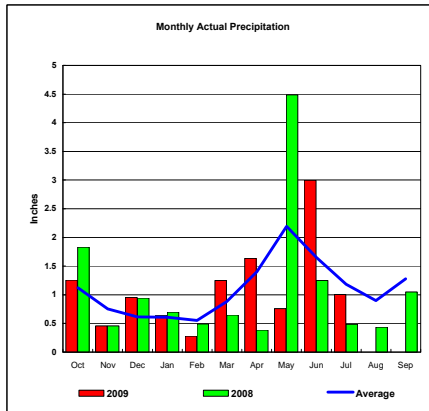


Total Actual Precipitation thru July (Inch.) - 11.60

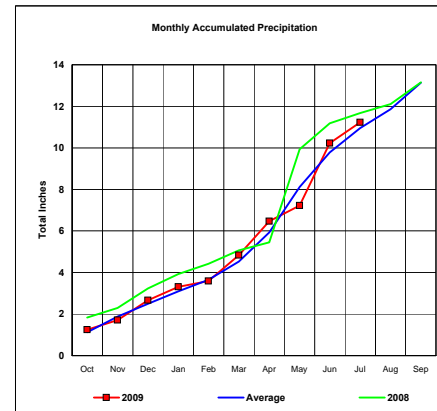


Total Average Precipitation thru July (Inch.) - 11.48
 Percent of Average for July - 101.05%

Bighorn River Basin



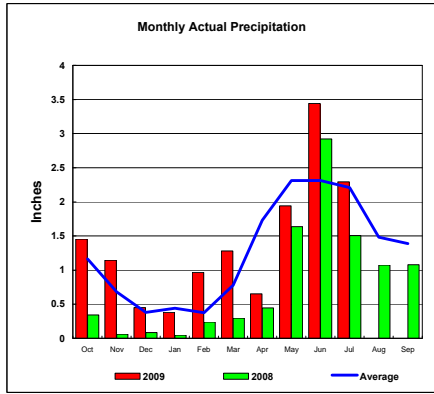
Total Actual Precipitation thru July (Inch.) - 11.23



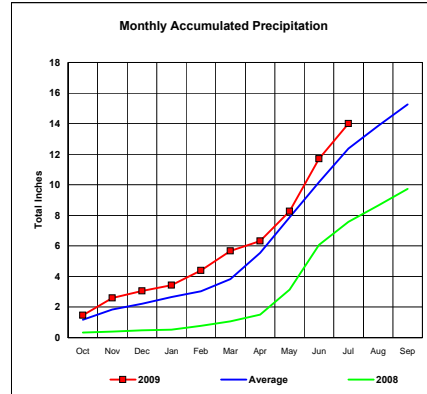
Total Average Precipitation thru July (Inch.) - 10.96
 Percent of Average for July - 102.44%

BASIN PRECIPITATION - ACTUAL MONTHLY vs AVERAGE MONTHLY TOTALS
Data for the Month of July 2009

Heart River Basin

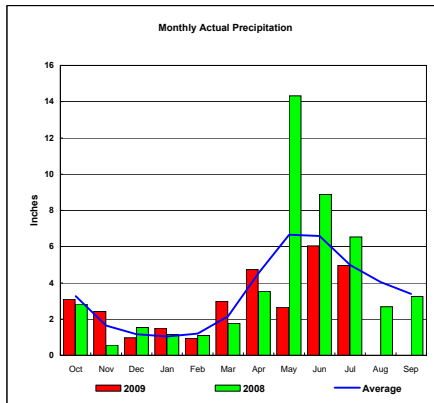


Total Actual Precipitation thru July (Inch.) - 14.00

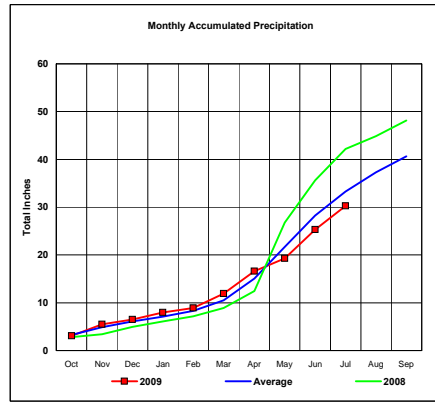


Total Average Precipitation thru July (Inch.) - 12.38
Percent of Average for July - 113.09%

Cheyenne River Basin

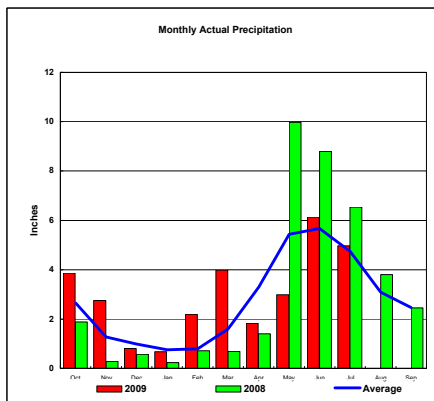


Total Actual Precipitation thru July (Inch.) - 30.29

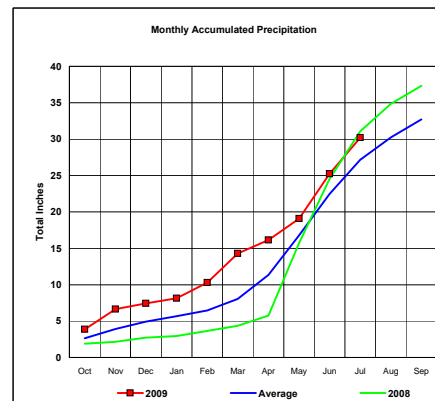


Total Average Precipitation thru July (Inch.) - 33.25
Percent of Average for July - 91.10%

Grand River Basin



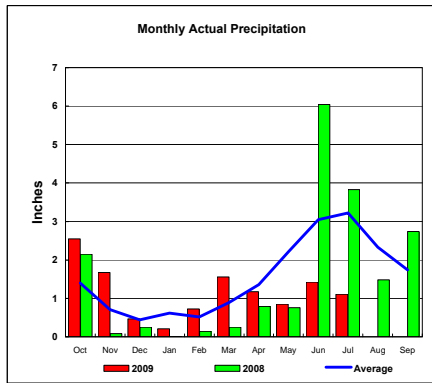
Total Actual Precipitation thru July (Inch.) - 30.19



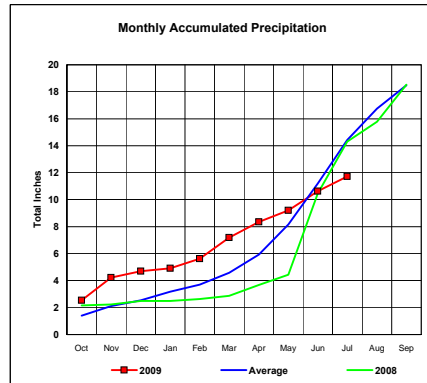
Total Average Precipitation thru July (Inch.) - 27.17
Percent of Average for July - 111.13%

BASIN PRECIPITATION - ACTUAL MONTHLY vs AVERAGE MONTHLY TOTALS
Data for the Month of July 2009

James River Basin

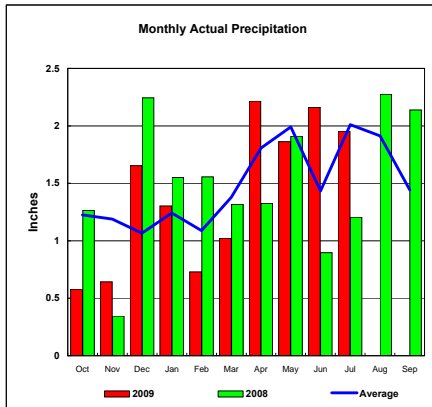


Total Actual Precipitation thru July (Inch.) - 11.73

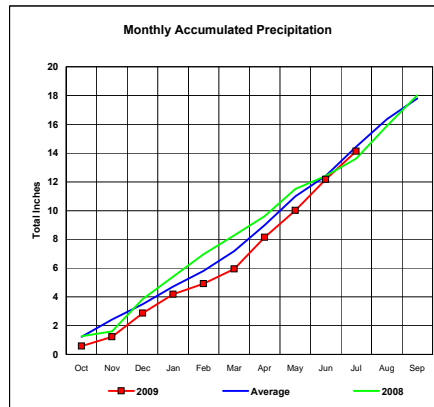


Total Average Precipitation thru July (Inch.) - 14.42
Percent of Average for July - 81.35%

Colorado-Big Thompson Project

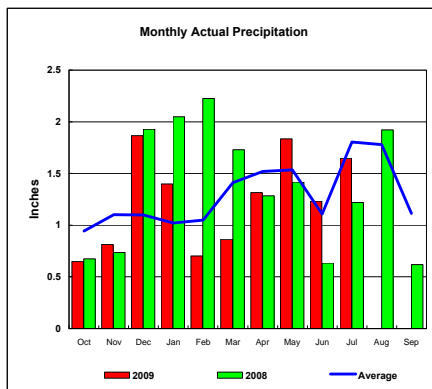


Total Actual Precipitation thru July (Inch.) - 14.12

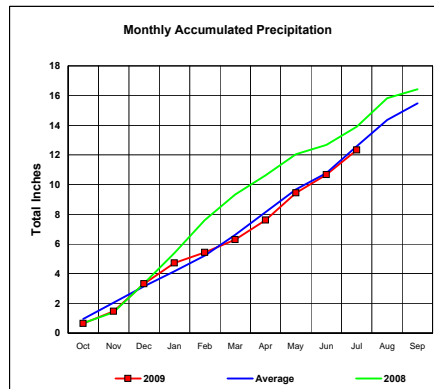


Total Average Precipitation thru July (Inch.) - 14.43
Percent of Average for July - 97.85%

Fryingpan-Arkansas Project



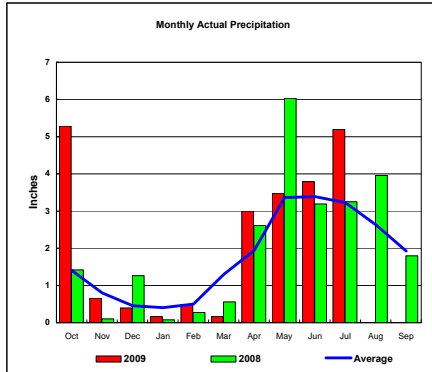
Total Actual Precipitation thru July (Inch.) - 12.33



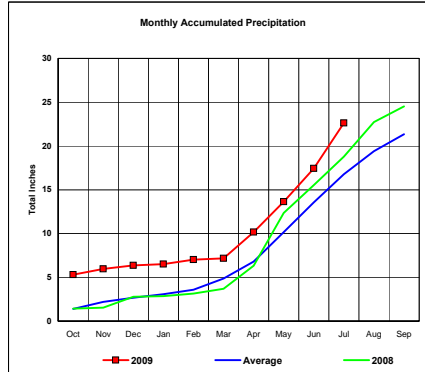
Total Average Precipitation thru July (Inch.) - 12.59
Percent of Average for July - 97.91%

BASIN PRECIPITATION - ACTUAL MONTHLY vs AVERAGE MONTHLY TOTALS
Data for the Month of July 2009

Republican River Basin

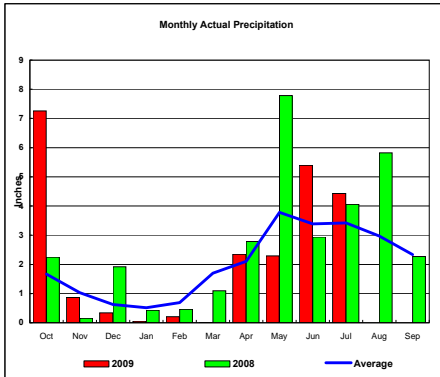


Total Actual Precipitation thru July (Inch.) - 22.63

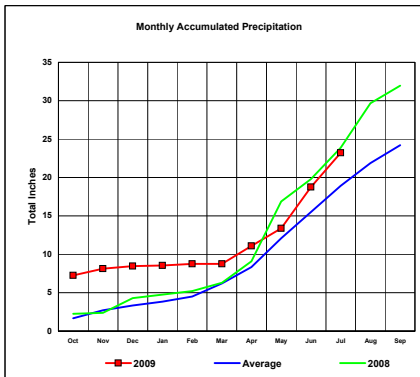


Total Average Precipitation thru July (Inch.) - 16.79
Percent of Average for July - 134.81%

Solomon River Basin

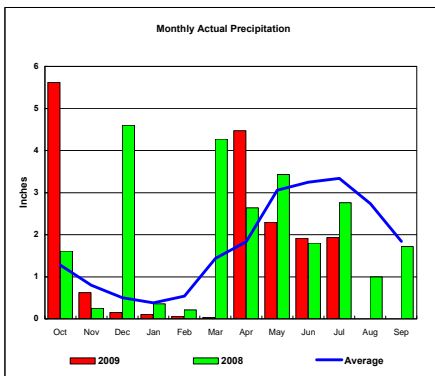


Total Actual Precipitation thru July (Inch.) - 23.20

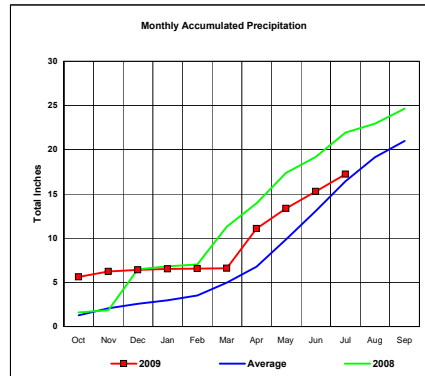


Total Average Precipitation thru July (Inch.) - 18.91
Percent of Average for July - 122.70%

Smoky Hill River Basin



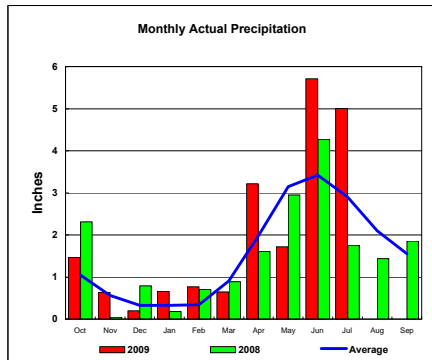
Total Actual Precipitation thru July (Inch.) - 17.21



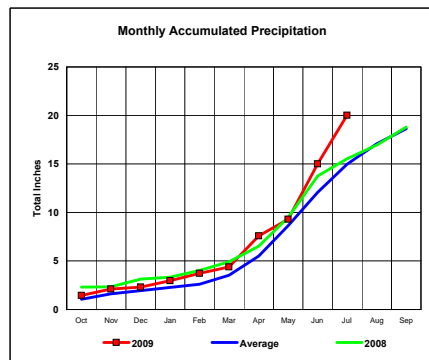
Total Average Precipitation thru July (Inch.) - 16.42
Percent of Average for July - 104.81%

BASIN PRECIPITATION - ACTUAL MONTHLY vs AVERAGE MONTHLY TOTALS
Data for the Month of July 2009

Niobrara River Basin

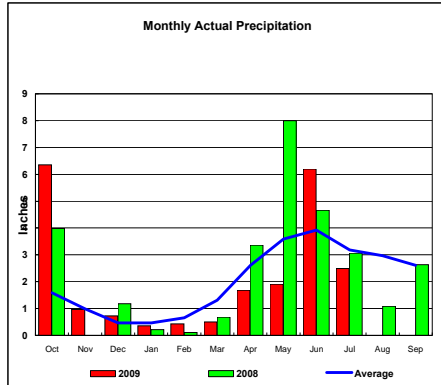


Total Actual Precipitation thru July (Inch.) - 20.02

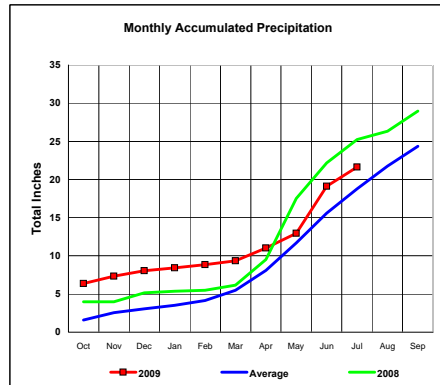


Total Average Precipitation thru July (Inch.) - 14.98
Percent of Average for July - 133.69%

Lower Platte River Basin

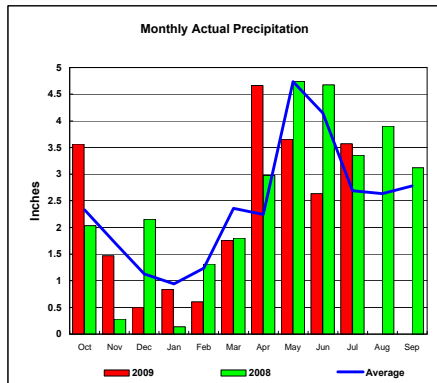


Total Actual Precipitation thru July (Inch.) - 21.62

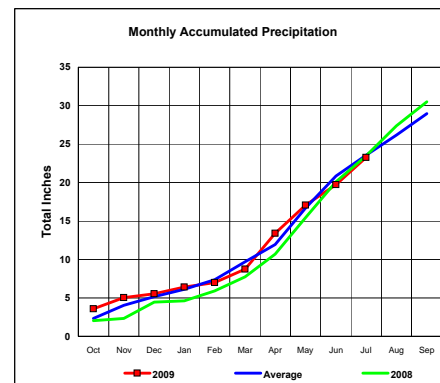


Total Average Precipitation thru July (Inch.) - 18.78
Percent of Average for July - 115.12%

Arkansas River Basin



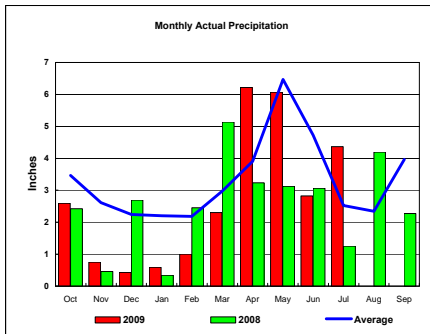
Total Actual Precipitation thru July (Inch.) - 23.28



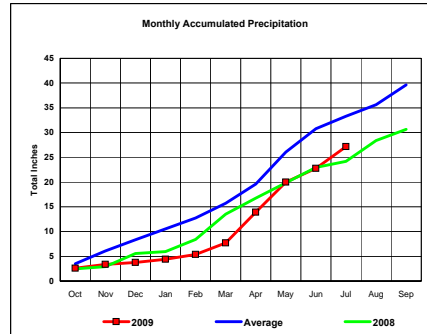
Total Average Precipitation thru July (Inch.) - 23.54
Percent of Average for July - 98.90%

BASIN PRECIPITATION - ACTUAL MONTHLY vs AVERAGE MONTHLY TOTALS
Data for the Month of July 2009

Red River Basin

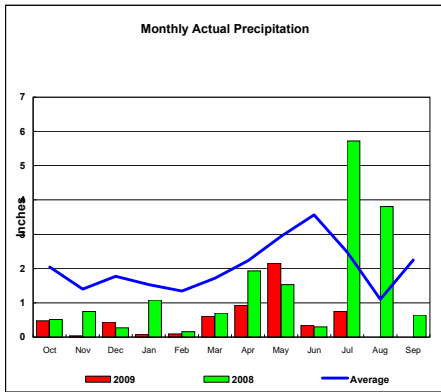


Total Actual Precipitation thru July (Inch.) - 27.14

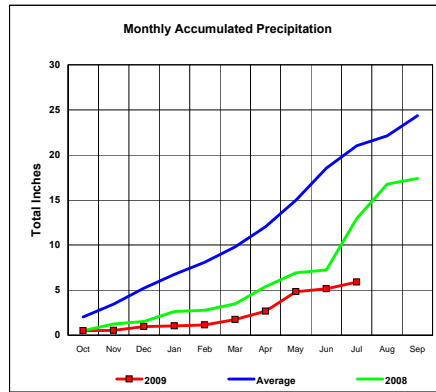


Total Average Precipitation thru July (Inch.) - 33.30
Percent of Average for July - 81.50%

Nueces River Basin

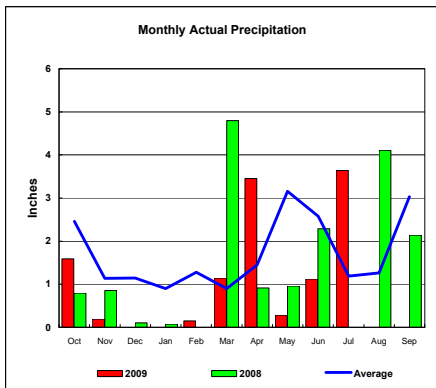


Total Actual Precipitation thru July (Inch.) - 5.91

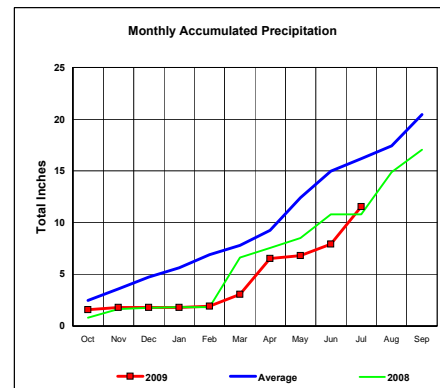


Total Average Precipitation thru July (Inch.) - 21.01
Percent of Average for July - 28.13%

Colorado River Basin



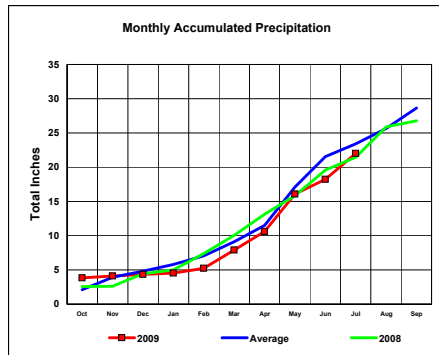
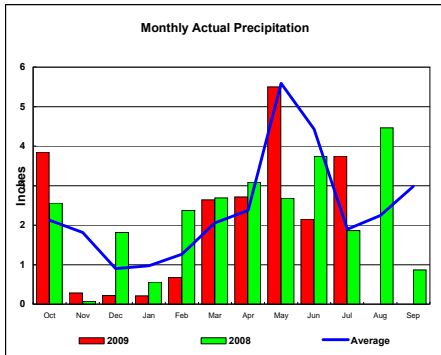
Total Actual Precipitation thru July (Inch.) - 11.56



Total Average Precipitation thru July (Inch.) - 16.17
Percent of Average for July - 71.46%

BASIN PRECIPITATION - ACTUAL MONTHLY vs AVERAGE MONTHLY TOTALS
Data for the Month of July 2009

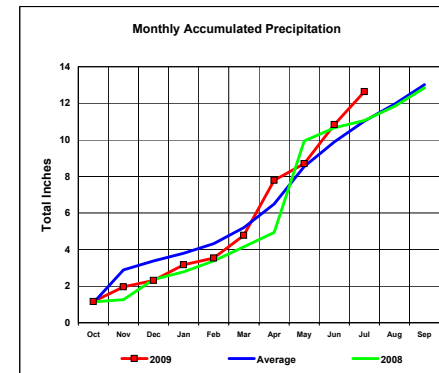
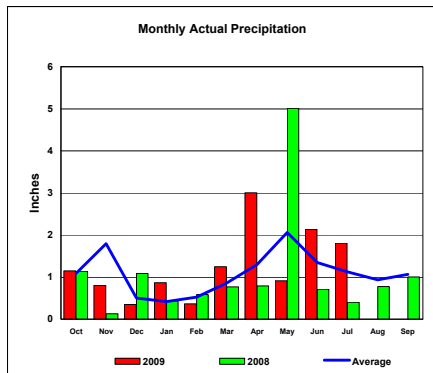
Washita River Basin



Total Actual Precipitation thru July (Inch.) - 21.99

Total Average Precipitation thru July (Inch.) - 23.42
Percent of Average for July - 93.89%

North Platte River Basin



Total Actual Precipitation thru July (Inch.) - 12.64

Total Average Precipitation thru July (Inch.) - 11.02
Percent of Average for July - 114.73%