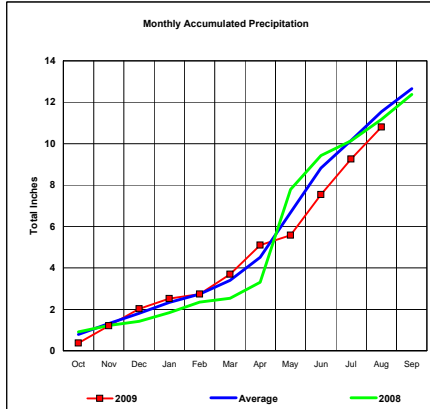
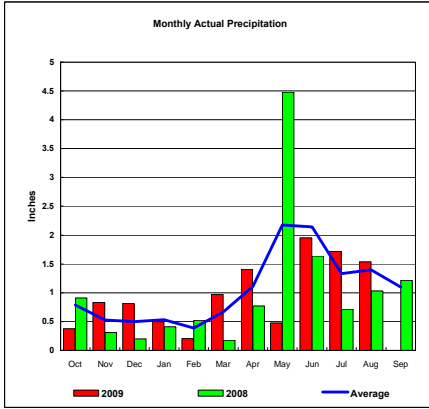


BASIN PRECIPITATION - ACTUAL MONTHLY vs AVERAGE MONTHLY TOTALS
Data for the Month of August 2009

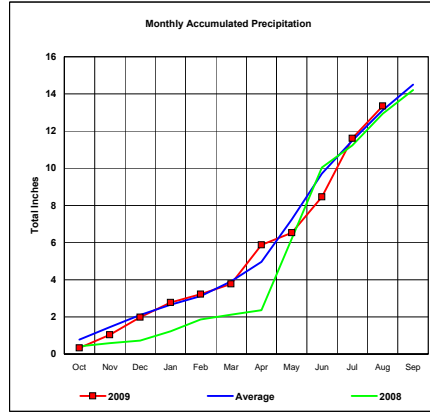
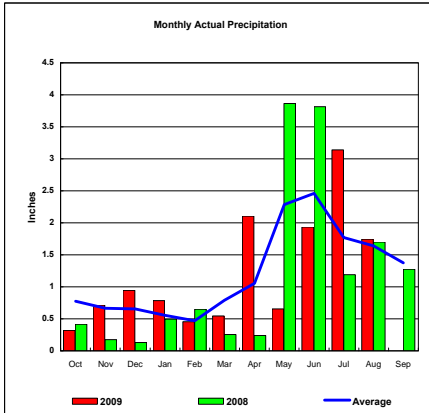
Upper Missouri River Basin



Total Actual Precipitation thru August (Inch.) - 10.80

Total Average Precipitation thru August (Inch.) - 11.55
 Percent of Average for August - 93.46%

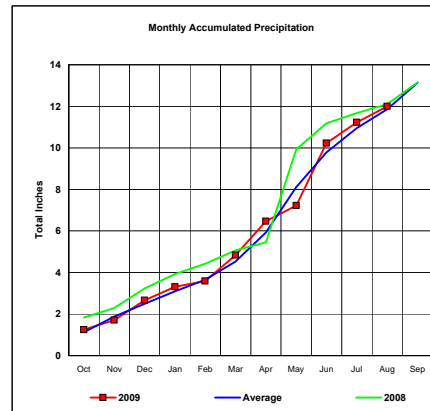
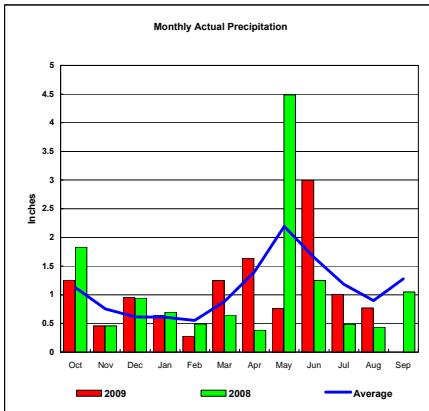
Milk River Basin



Total Actual Precipitation thru August (Inch.) - 13.35

Total Average Precipitation thru August (Inch.) - 13.12
 Percent of Average for August - 101.71%

Bighorn River Basin

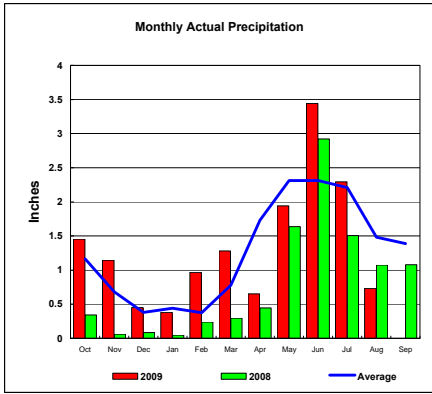


Total Actual Precipitation thru August (Inch.) - 12.00

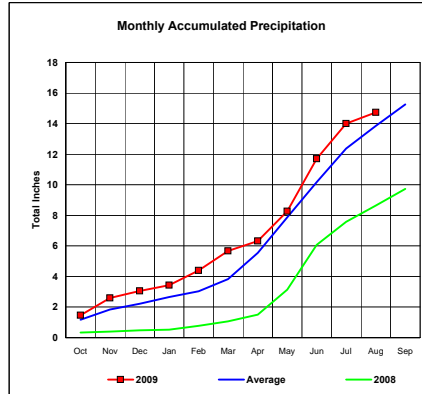
Total Average Precipitation thru August (Inch.) - 11.86
 Percent of Average for August - 101.18%

BASIN PRECIPITATION - ACTUAL MONTHLY vs AVERAGE MONTHLY TOTALS
 Data for the Month of August 2009

Heart River Basin

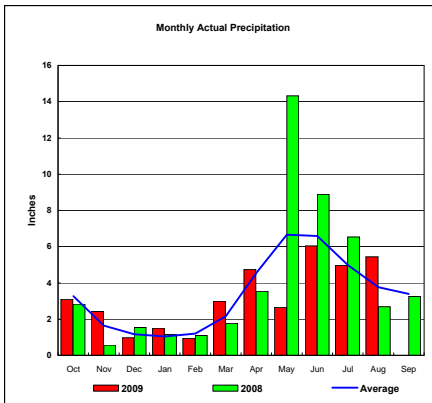


Total Actual Precipitation thru August (Inch.) - 14.73

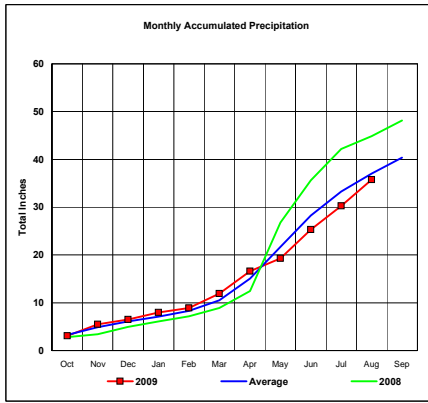


Total Average Precipitation thru August (Inch.) - 13.86
 Percent of Average for August - 106.28%

Cheyenne River Basin

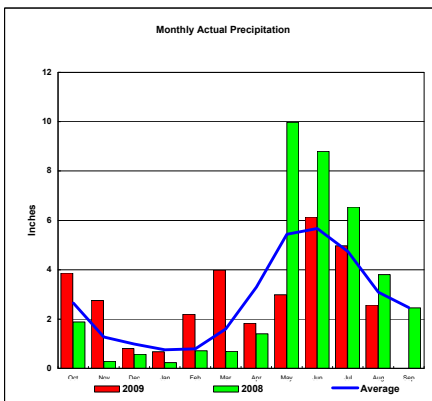


Total Actual Precipitation thru August (Inch.) - 35.73

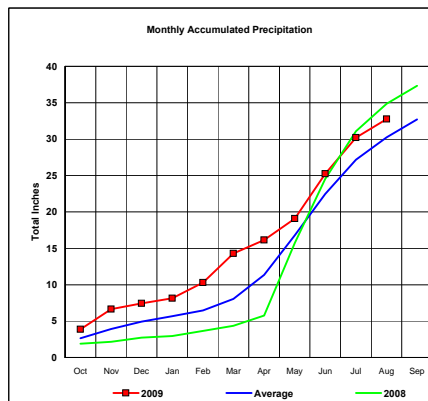


Total Average Precipitation thru August (Inch.) - 37.02
 Percent of Average for August - 96.52%

Grand River Basin



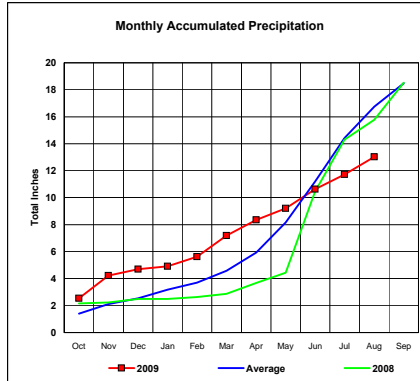
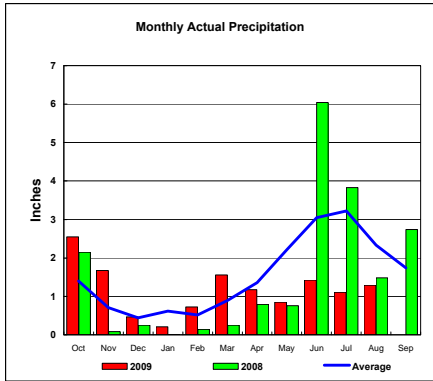
Total Actual Precipitation thru August (Inch.) - 32.76



Total Average Precipitation thru August (Inch.) - 30.26
 Percent of Average for August - 108.27%

BASIN PRECIPITATION - ACTUAL MONTHLY vs AVERAGE MONTHLY TOTALS
Data for the Month of August 2009

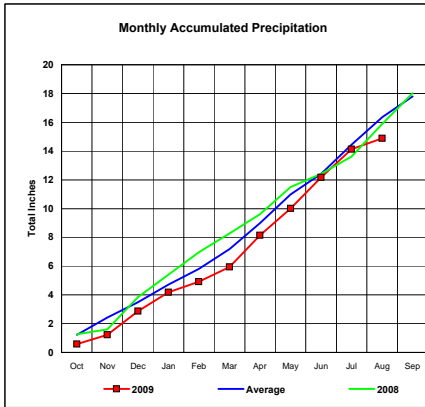
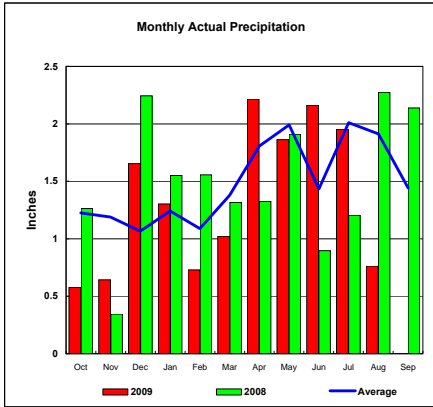
James River Basin



Total Actual Precipitation thru August (Inch.) - 13.02

Total Average Precipitation thru August (Inch.) - 16.75
 Percent of Average for August - 77.73%

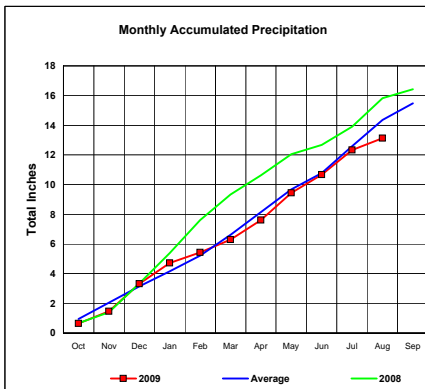
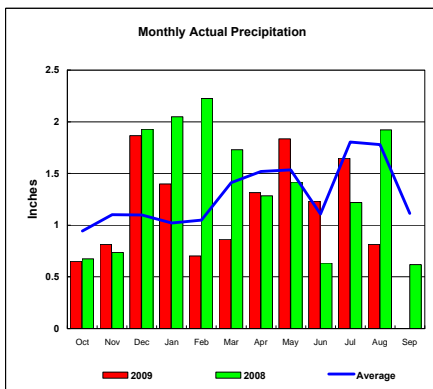
Colorado-Big Thompson Project



Total Actual Precipitation thru August (Inch.) - 14.89

Total Average Precipitation thru August (Inch.) - 16.35
 Percent of Average for August - 91.07%

Fryingpan-Arkansas Project

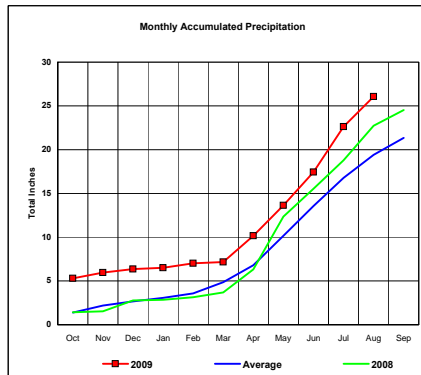
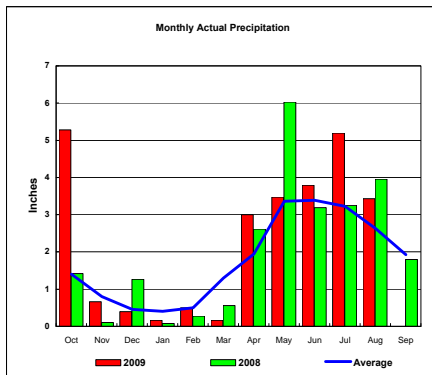


Total Actual Precipitation thru August (Inch.) - 13.14

Total Average Precipitation thru August (Inch.) - 14.37
 Percent of Average for August - 91.44%

BASIN PRECIPITATION - ACTUAL MONTHLY vs AVERAGE MONTHLY TOTALS
Data for the Month of August 2009

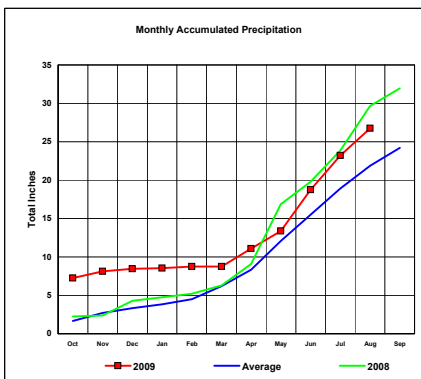
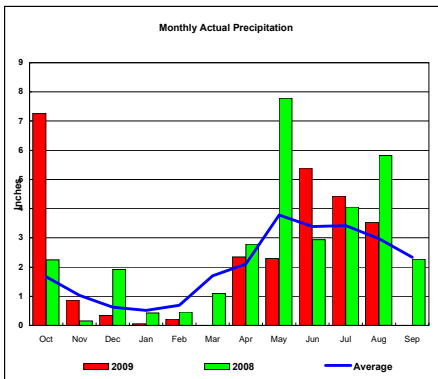
Republican River Basin



Total Actual Precipitation thru August (Inch.) - 26.06

Total Average Precipitation thru August (Inch.) - 19.42
 Percent of Average for August - 134.21%

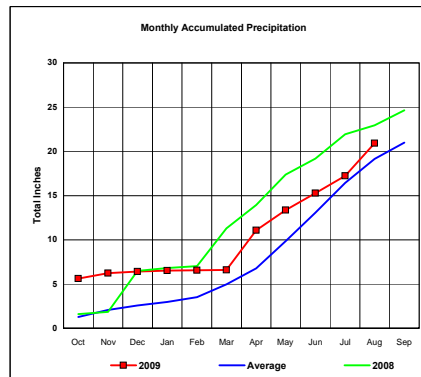
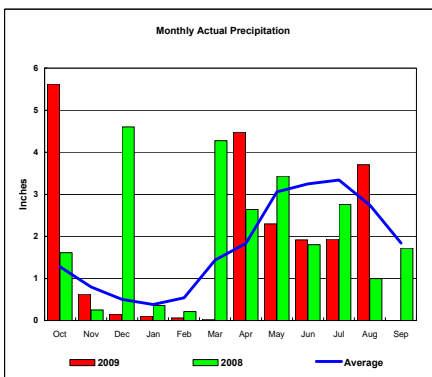
Solomon River Basin



Total Actual Precipitation thru August (Inch.) - 26.74

Total Average Precipitation thru August (Inch.) - 21.88
 Percent of Average for August - 122.22%

Smoky Hill River Basin

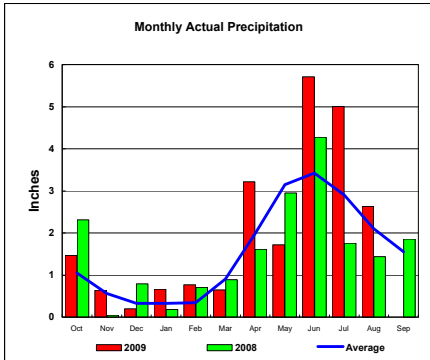


Total Actual Precipitation thru August (Inch.) - 20.91

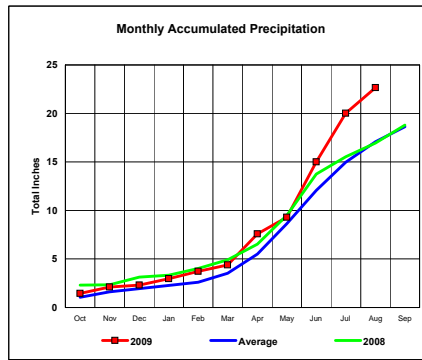
Total Average Precipitation thru August (Inch.) - 19.16
 Percent of Average for August - 109.13%

BASIN PRECIPITATION - ACTUAL MONTHLY vs AVERAGE MONTHLY TOTALS
Data for the Month of August 2009

Niobrara River Basin

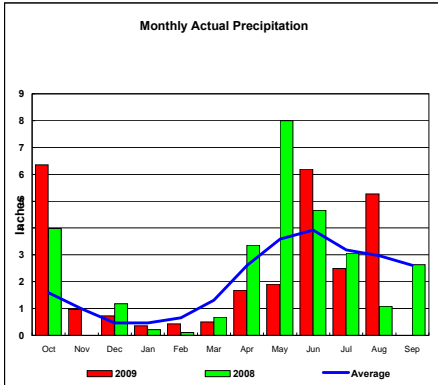


Total Actual Precipitation thru August (Inch.) - 22.65

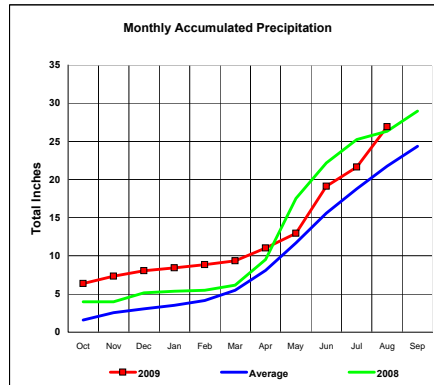


Total Average Precipitation thru August (Inch.) - 17.08
 Percent of Average for August - 132.65%

Lower Platte River Basin

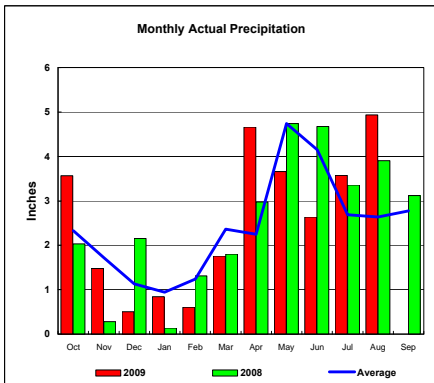


Total Actual Precipitation thru August (Inch.) - 26.89

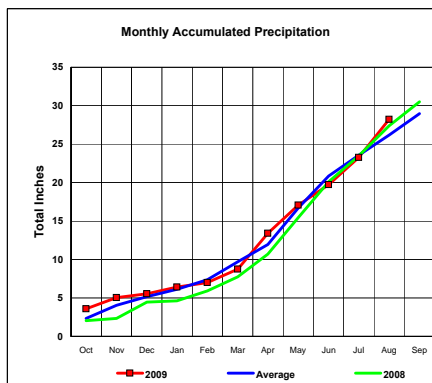


Total Average Precipitation thru August (Inch.) - 21.75
 Percent of Average for August - 123.66%

Arkansas River Basin



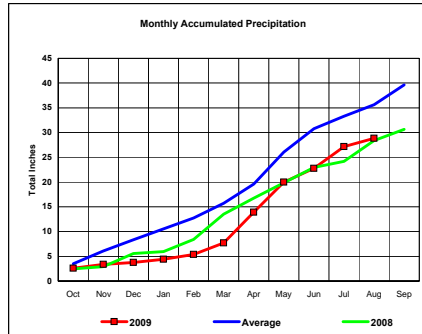
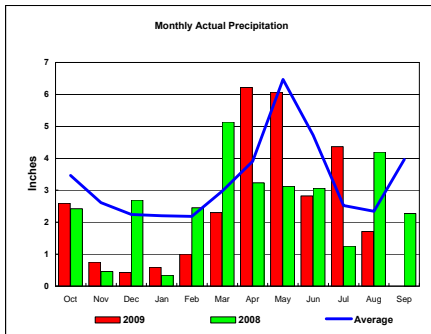
Total Actual Precipitation thru August (Inch.) - 28.21



Total Average Precipitation thru August (Inch.) - 26.17
 Percent of Average for August - 107.81%

BASIN PRECIPITATION - ACTUAL MONTHLY vs AVERAGE MONTHLY TOTALS
 Data for the Month of August 2009

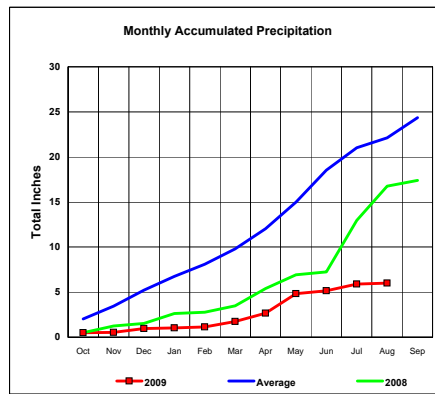
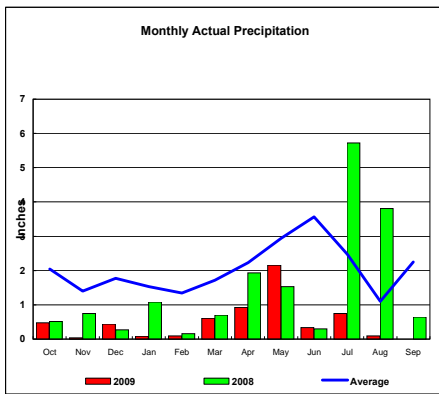
Red River Basin



Total Actual Precipitation thru August (Inch.) - 28.85

Total Average Precipitation thru August (Inch.) - 35.65
 Percent of Average for August - 80.93%

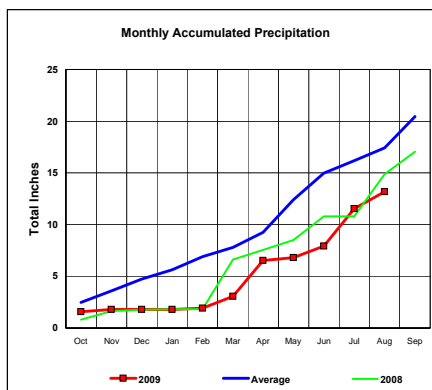
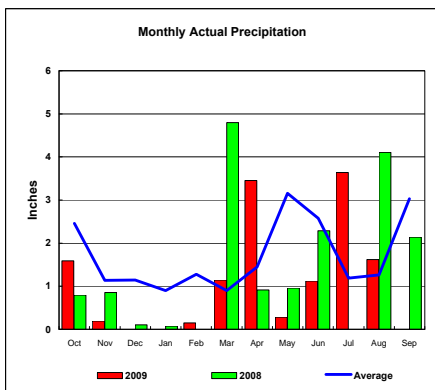
Nueces River Basin



Total Actual Precipitation thru August (Inch.) - 6.00

Total Average Precipitation thru August (Inch.) - 22.11
 Percent of Average for August - 27.14%

Colorado River Basin

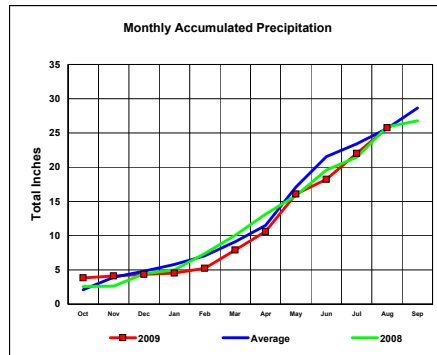
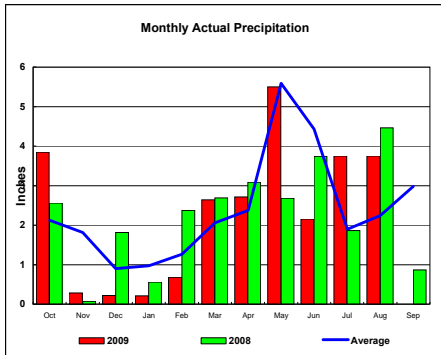


Total Actual Precipitation thru August (Inch.) - 13.18

Total Average Precipitation thru August (Inch.) - 17.44
 Percent of Average for August - 75.57%

BASIN PRECIPITATION - ACTUAL MONTHLY vs AVERAGE MONTHLY TOTALS
 Data for the Month of August 2009

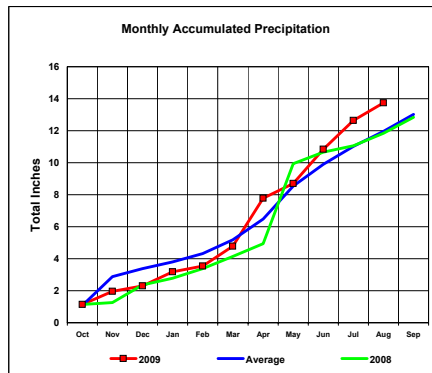
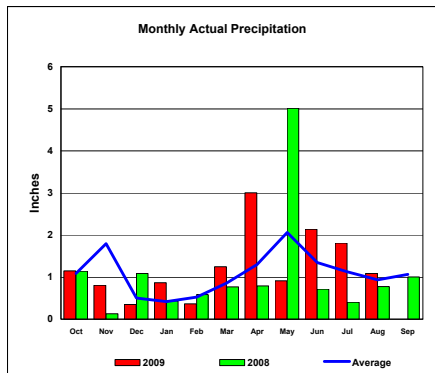
Washita River Basin



Total Actual Precipitation thru August (Inch.) - 25.74

Total Average Precipitation thru August (Inch.) - 25.66
 Percent of Average for August - 100.29%

North Platte River Basin



Total Actual Precipitation thru August (Inch.) - 13.73

Total Average Precipitation thru August (Inch.) - 11.95
 Percent of Average for August - 114.88%