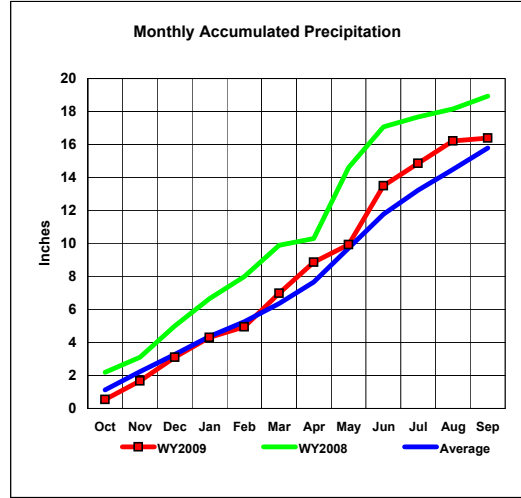
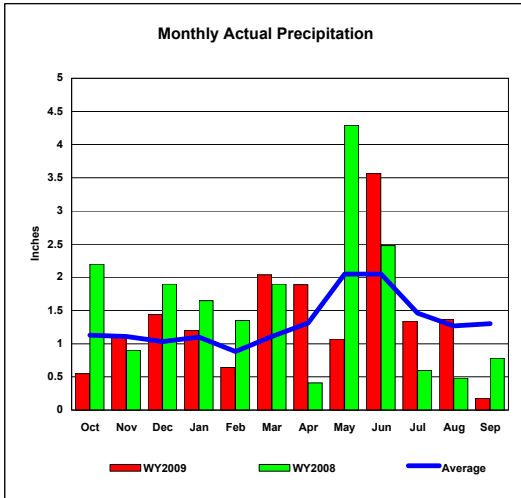


Buffalo Bill Reservoir, Wyoming
Monthly Precipitation - WY2009, WY2008 and Average Conditions
Data for the Month of September, 2009



Precipitation Summary for Buffalo Bill Reservoir										
Month	2009 Month	2009 Total for Year	Average	Average Total	2008 Month	2008 Total for Year	Month		Total	
							Percent 2009 to 2008	Percent 2009 to Average	Percent 2009 to 2008	Percent 2009 to Average
Oct	0.55	0.55	1.13	1.13	2.20	2.20	25.0%	48.7%	25.0%	48.7%
Nov	1.11	1.66	1.11	2.24	0.90	3.10	123.3%	100.0%	53.5%	74.1%
Dec	1.44	3.10	1.03	3.27	1.90	5.00	75.8%	139.8%	62.0%	94.8%
Jan	1.20	4.30	1.10	4.37	1.65	6.65	72.7%	109.1%	64.7%	98.4%
Feb	0.64	4.94	0.88	5.25	1.35	8.00	47.4%	72.7%	61.8%	94.1%
Mar	2.04	6.98	1.11	6.36	1.90	9.90	107.4%	183.8%	70.5%	109.7%
Apr	1.89	8.87	1.31	7.67	0.41	10.31	461.0%	144.3%	86.0%	115.6%
May	1.07	9.94	2.05	9.72	4.29	14.60	24.9%	52.2%	68.1%	102.3%
June	3.57	13.51	2.05	11.77	2.48	17.08	144.0%	174.1%	79.1%	114.8%
July	1.34	14.85	1.46	13.23	0.60	17.68	223.3%	91.8%	84.0%	112.2%
Aug	1.37	16.22	1.27	14.50	0.48	18.16	285.4%	107.9%	89.3%	111.9%
Sep	0.18	16.40	1.30	15.80	0.78	18.94	23.1%	13.8%	86.6%	103.8%